

ONErack_{patent pending} internal power supply

Installation Guide V1.21

MNL-1RK-PSU V1.21

Nov 2016

In this guide

In the box	1
Fitting the ONErack internal power supply	2
Powering modules outside your ONErack with the service cable	5
Safety	7
Contact us	8

In the box

1 internal power supply:

With lower tab,



or with upper and lower tabs



2 daisy-chain cables



2 guide rails



4 M3 screws (**Note:** if your module has only the lower tab, you only need 2 screws)



1 power lead, AC (appropriate for your region)



1 service cable

1 A3 template



In the unlikely event that a component is missing or damaged, please contact tech.usa@tvone.com or tech.europe@tvone.com.

Tools

Pozidriv® PZ1 crosshead screwdriver

Fitting the ONErack internal power supply

! To avoid damaging your ONErack, build it in a clean, tidy area.

This installation guide assumes you have already built a ONErack chassis.

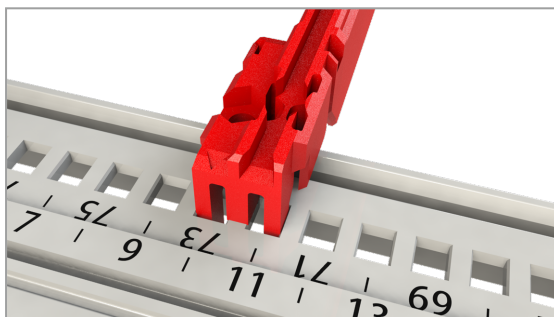
Read more about building a chassis in the installation guide for the ONErack chassis. The guide is available from the Support Documents tab at tvone.com/onerack.

You can place the internal power supply anywhere in your ONErack chassis. If you decide to mount the internal power supply at the right-hand end of the chassis, leave a minimum of 10 numbered holes to the right of the guide rail. This allows space for airflow.

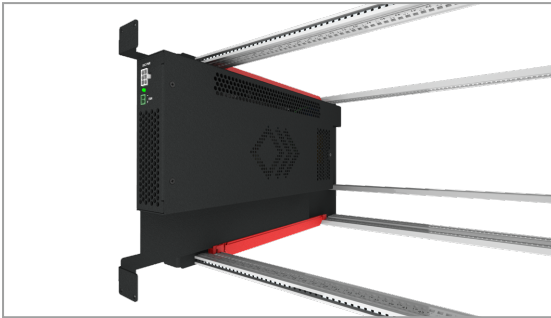
1. Clip the guide rails into the lower and upper mounting rails.

Use the numbers to help you fit the guide rails straight and in line with one another. You can also use the template included in the box.

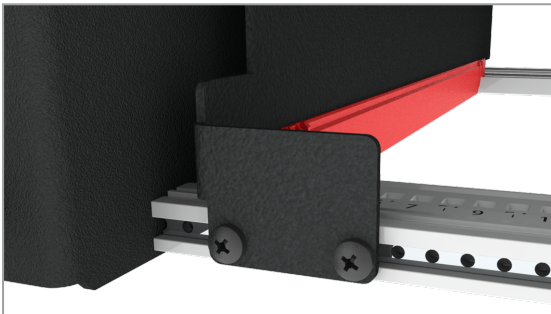
Make sure the groove is on the right when you look from the front of the chassis.



2. Slide the internal power supply into the groove in the guide rails.



3. Screw the internal power supply in place with M3 screws.
4. If you have both upper and lower tabs, use four screws. If you have the lower tab only, use two screws.



5. OPTIONAL: Connect one or both daisy-chain cables to the rear of the internal power supply, ready for your modules.

You only need to connect a daisy-chain cable to the upper port if you need to provide 250 W to the lower rail, or if you intend to create an upper rail with extra voltage selectors, sold separately. Ask your sales representative about 1RK-XTRA-RAIL and 1RK-XTRA-PWR.

6. When you have connected all your modules with daisy-chain cables, connect your internal power supply to an electrical outlet.

The green LED on the front of the internal power supply lights up.

Read more about installing modules in the installation guide for ONErack modules. The guide is available from the Support Documents tab at tvone.com/onerack.

Powering modules outside your ONErack with the service cable



When using the service cable to power a module, do not open the voltage selector or attempt to change the voltage of that module.

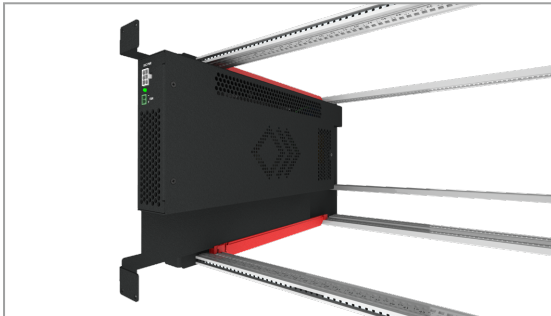


Before you connect the service cable to a module, make sure the connector is up the right way.

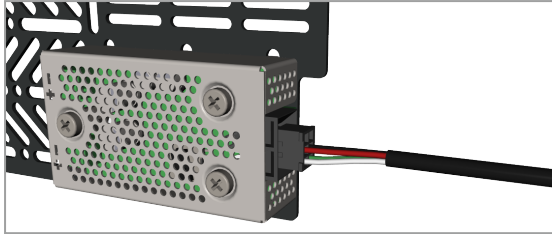
To service devices mounted on modules, you remove the module from the ONErack chassis. Removing the module from the chassis disconnects the module from the internal power supply.

The service cable allows you to remove a module and connect it directly to the internal power supply. Your devices are powered, and serviceable.

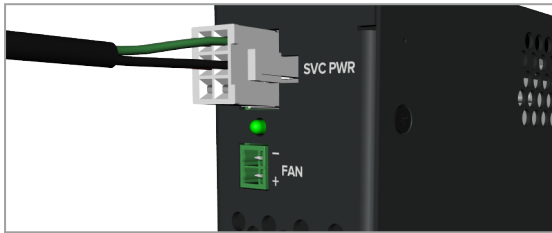
1. Remove the module from the chassis.



2. Connect the service cable to the voltage selector of the module.



3. Connect the service cable to the internal power supply.



Safety



Risk of electrical shock

- Do not open the cover of the internal power supply.
There are no user-serviceable parts inside.
- When using the service cable to power a module, do not open the voltage selector or attempt to change the voltage of that module.



Risk of damage to equipment

- Each daisy-chain cable is protected by an 8 A fuse. Do not overload the cables.
- The internal power supply can supply up to 200 W to a single daisy-chain, or up to 250 W across two daisy-chains. Do not overload the internal power supply. If the internal power supply is overloaded, it will not start.
- Do not block the vents of the internal power supply. If the internal power supply overheats, it shuts down and will not restart.
- Before you connect the service cable to a module, make sure the connector is up the right way.

Contact us

tvONE NCSA

North, Central, and South America

📍 2791 Circleport Drive, Erlanger, KY 41018, USA

☎ Tel +1 859-282-7303

Fax +1 859-282-8225

✉ Sales: sales@tvone.com

Support: tech.usa@tvone.com

tvONE EMEA

Europe, Middle East, Africa, and Asia Pacific

📍 Continental Approach, Westwood Industrial Estate, Margate,
Kent, CT9 4JG, UK

☎ Tel +44 01843 873311

Fax +44 01843 873312

✉ Sales: sales.europe@tvone.com

Support: tech.europe@tvone.com

www.tvone.com info@tvone.com

Information in this document is subject to change without notice. No part of this publication may be reproduced, stored in a retrieval system, or transmitted in any form or any means electronic or mechanical, including photocopying and recording for any purpose other than the purchaser's personal use without the written permission of tvONE.

Copyright © 2016 tvONE. All rights reserved.



See our full range of scalers and video processors at www.tvone.com

