

ATS100 Series

Garden Speakers

Key Features

- Downward Firing Speaker Will Not Collect Dust or Condensation
- Rugged Construction Can Support Up To 250 lbs
- Easy Bayonet Attachment of Head Unit To Base, Enables Installation of Base During Excavation and Installation of Head Unit After Landscaping Has Been Completed
- Available in 70.7V or 8Ω Versions
- Easy Conduit Installation in Large and Small Base With Dedicated Mounting Pads
- Speaker Protected By Triple Layer Grille
- Small Base (ATS100GS) has Drill Points for 4" Square, 2-Gang EO Box, or 1-Gang Box Mounting to a Deck or Slab



Head Unit



Large Base



Small Base

ATS100 Series Instructions

To Install Large Base:

1. Make sure you have a path to bury wire connected to speaker.
2. Dig a hole 8" deep x 30" diameter.
3. Run wire to hole.
4. Attach conduit or gland nut to flats on base.
5. Bring in wire and leave sufficient cable for adequate service loop (minimum 18") to reach head unit.
6. Fill base with clean dirt or sand to within 2"-3" of top for optimum bass performance.
7. Cover with provided temporary lid and attach with provided 1" screws if head unit is not to be attached immediately.
8. Back fill dirt to base. Top of base should be 2" – 3" above ground.

To Install Small Base:

If Using an EO Box:

1. Install 1-Gang, 2-Gang, or 4" x 4" box flush to mounting surface.
2. Cut out scribed line on bottom of base for 1- or 2-gang box.
3. Drill appropriate holes in base (outer 4 holes for 4" x 4", inner 4 for 2-gang, or 1 set of 2 inner for 1-gang).
4. Install wiring in box.
5. Set base on box and attach with screws.

If Using Conduit:

1. Mount base to surface with appropriate screws through the base bottom.
2. Attach conduit and bring in wire. Provide for surface loop (minimum 18").
3. Cover with provided temporary lid and attach with provided 1" screws if head unit is not to be attached immediately.

ATS100 Series

Garden Speakers

To Install Head Unit on Base:

1. Remove temporary cover, if present. Retain screws.
2. **70.7V Version:** Attach the purple wire from the head unit to the positive input wire and the black to the negative.
8Ω Version: Attach the brown wire from the head unit to the positive input wire and the green to the negative.
3. Line up the 3 "feet" on the head unit with the holes in the base.
4. Push the head unit down into the holes and turn clockwise to lock the head unit in place.
5. Put a 1" Phillips-head screw (supplied with the base) through the locking screw access hole to secure and prevent removal by unauthorized persons.
6. Put stick-on logo cover over access hole. (See Figure 1)
7. Select transformer tap wattage (70.7V Version Only) using a dime or small screwdriver to adjust stepped switch. (Switch is located on the underside of the "domed" section of the head unit near outer edge.) Insert red weather protection "plug" into recessed switch cavity using thumb to press the cap into place. (See Figure 2)



Head Unit

ATS100 SERIES Specifications

Frequency Response	43Hz – 20kHz (±7dB)
Sensitivity (1W / 1M)	89.5dB (Half Space Reference)
Power Handling	70 Watts RMS
Horizontal Dispersion	360°
Speaker	Coaxial 8", Polypropylene / Kevlar Cone with Rubber Surround, ½" Mylar Dome Tweeter, 1½" Voice Coil, 21oz Magnet
Transformer	(70.7V Version Only) 8, 16, & 32 Watts, with an External Switch
Dimensions	
Large Base Width	17⅝" (448mm)
Large Base Length	17⅝" (448mm)
Large Base Height	20⅞" (531mm)
Small Base Diameter	15⅞" (384mm)
Small Base Height	13⅞" (334mm)
Head Unit Weight	13.2 lbs (5.99Kg)
Small Base Weight	2.4 lbs (1.09Kg)
Large Base Weight	6.4 lbs (2.9Kg)

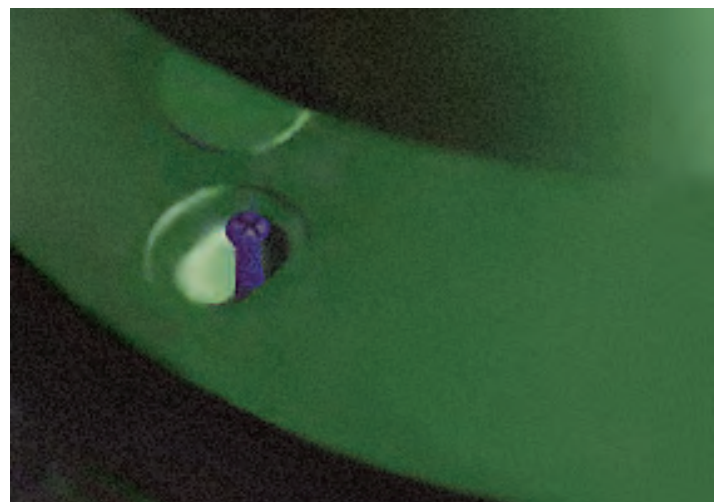


Figure 1



Figure 2