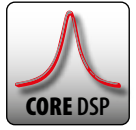




KEY FEATURES

- High output Coaxial Stage Monitors
- Very compact size and low-profile design
- Single magnet neodymium motor
- Controlled dispersion for excellent close listening performance and consistent off-axis coverage
- 96KHz / 40bit floating point CORE processing with PRONET AX remote control
- Dynamic EQ, for a full dynamic range at any level
- Digitally controlled Class D amplifier module with SMPS

CX Series Stage Monitors are amongst the most compact and powerful in their class, designed around a minimal spacesaving footprint that makes them unobtrusive on stage. This is achieved by the use of innovative coaxial drive units that help to eliminate the time and phase problems that can occur with discrete non-coincident sources. Constructed with two different angles sides, the CX Series monitors also feature integral pole holders to enable use as front of house loudspeakers. The integrated Class D amplifiers and built-in DSP offers factory presets for consistent performance on any concert stage, and delivers top of the range performance, superior sound definition at any audio frequency, and very high dynamic range even at maximum power.



CXL12A

12" Coaxial Powered Stage Monitor

CXL12A is the CX series lightest stage monitor (15Kg) suitable for all applications where unobtrusive size is a must, such as in live concerts, theatre shows and TV applications.

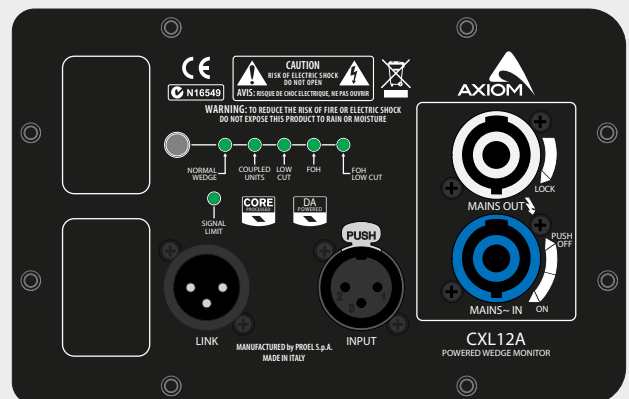
The transducer's coaxial design offers a very stable acoustical pattern in both the horizontal and vertical axes. The single magnet neodymium motor reduces the delay between the two sources, eliminating time and phase problems, and guarantees high performance with a consistent weight and size reduction.



The highs are handled by a low-distortion compression driver with a 1.7" aluminum voice coil and polyimide diaphragm. The proprietary horn provides a precise and controlled dispersion of 90° horizontal and 60° vertical, allowing an excellent performance at close listening distance and a consistent off-axis coverage. The 12" woofer is equipped with a 2.5" voice coil and a water repellent cone which enables CXL12A to perform in adverse weather conditions.

Two different angles to the floor (35° and 50°) enables CXL12A to be placed at differing distances from the musicians according to the size of the stage and to the kind of monitoring needed. Powerful Class D amplifier together with CORE DSP processing provides very high SPL before feedback and excellent intelligibility even at very high power. The CORE LT DSP signal processing includes a sophisticated Dynamic EQ, able to shape accurately the system's sound while maintaining a full dynamic range at any level.

5 EQ presets are available to adapt the monitor to different kinds of application, including the use as a Front-of-House system.





CX14A

14" Coaxial Powered Stage Monitor

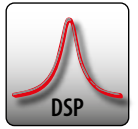
The CX14A is one of the most compact and lightweight stage monitors in its category, designed specifically for live sound, although the very compact, low-profile enclosure also makes it suitable for theatre and television applications.

The unique 14" LF transducer's coaxial design offers a very stable acoustical pattern over 80° in both the horizontal and vertical axes. The high frequency range is reproduced by a low-distortion compression driver equipped with a 3" aluminum voice coil and polyester/titanium diaphragm.

The combination of a high-performance coaxial transducer, a carefully designed cabinet, and powerful Class D amplifier together with CORE DSP processing provides very high SPL before feedback and excellent intelligibility even at very high power.



The 45° and 55° angled sides enable it to be positioned at differing distances from the performers depending on the stage size and type of monitoring needed. A convenient dual-angle pole holder allows the CX14A to be mounted on a standard speaker stand to be used as a multipurpose front of house loudspeaker.



CX15A

High End 15" Coaxial Powered Stage Monitor

The CX15A is an extremely compact and lightweight low-profile birch cabinet suitable for applications where the unobtrusive size is a must, providing exceptional intelligibility and high gain before feedback. It is ideally suited to live sound stage monitoring, as well as to theatre and television applications.

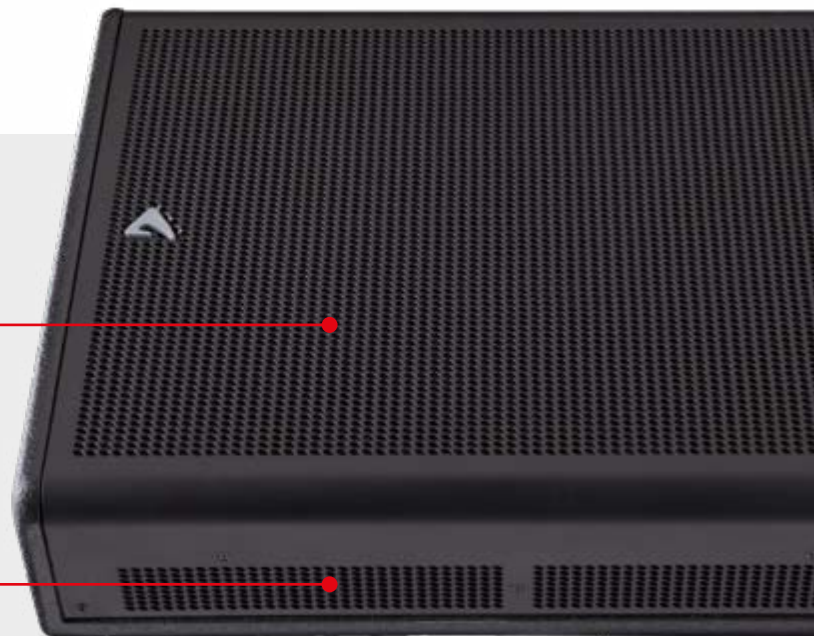
The co-axial driver configuration provides a very small footprint on stage while giving the output of a much larger unit. The dispersion pattern is optimised for general purpose monitoring applications at 80° conical, so allowing performers freedom to move around on stage but still stay within the coverage pattern.



96KHz / 40bit floating point CORE DSP and digitally controlled 2000W Class D amplifier with SMPS providing a superior sonic performance and a very high SPL before feedback.

Weather-proof coaxial transducer with single magnet neodymium motor for a very stable acoustical pattern and great sound intelligibility.

Specially designed reflex ports are on the front of the cabinet and aimed towards the floor where some beneficial mutual coupling occurs in the 80 Hz region, tightening up the bass response and increasing definition.



CX STAGE MONITORS

TECHNICAL SPECIFICATIONS

	CXL12A	CX14A	CX15A
Configuration	1 x 12" (2.5"VC) LF 1 x 1" (1.7"VC) HF	1 x 14" (3"VC) LF 1 x 2" (3"VC) HF	1 x 15" (3"VC) LF 1 x 1.4" (2.4"VC) HF
Frequency Response	75 Hz - 18kHz ±3dB (processed)	70 Hz - 18kHz ±3dB (processed)	60 Hz - 18kHz ±3dB (processed)
Max Peak SPL	129 dB SPL @ 1m	131 dB SPL @ 1m	131 dB SPL @ 1m
Amplifier Power Output	900W + 300W ClassD (continuous Pwr.)	900W + 300W ClassD (continuous Pwr.)	1000W + 1000W ClassD (continuous Pwr.)
Coverage Angle @ -6dB points	50° H x 70° V	80° H x 80° V	80° H x 80° V
Dimensions (WxHxD) mm / ins	451 x 322 x 405 17,76" x 12,67" x 15,94"	507 x 316 x 403 20" x 12,4" x 15,8"	520 x 336 x 415 20,5" x 13,2" x 16,3"
Net Weight	15 kg / 33 lbs	16 kg / 35.3 lbs	18.5 kg / 40.8 lbs
Enclosure	15mm phenolic birch plywood	15mm phenolic birch plywood	15mm phenolic birch plywood
Finish	Black textured paint	Black textured paint	Black textured paint
Mains Connectors	PowerCON™	PowerCON™	PowerCON™

