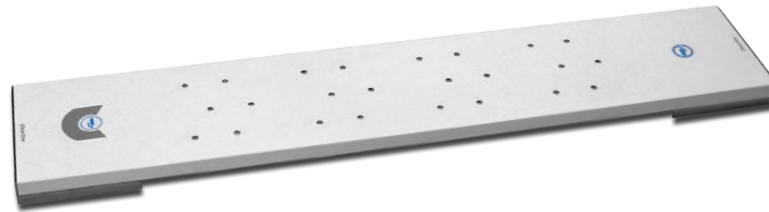


The Beamforming Microphone Array is the Pro-Audio industry's first professional-grade microphone array with beamforming and adaptive steering technology and ClearOne's next-generation Acoustic Echo Cancellation. The ultra-sleek design fits into any conferencing environment and delivers the clearest audio pickup available with adaptive acoustic processing.



Applications

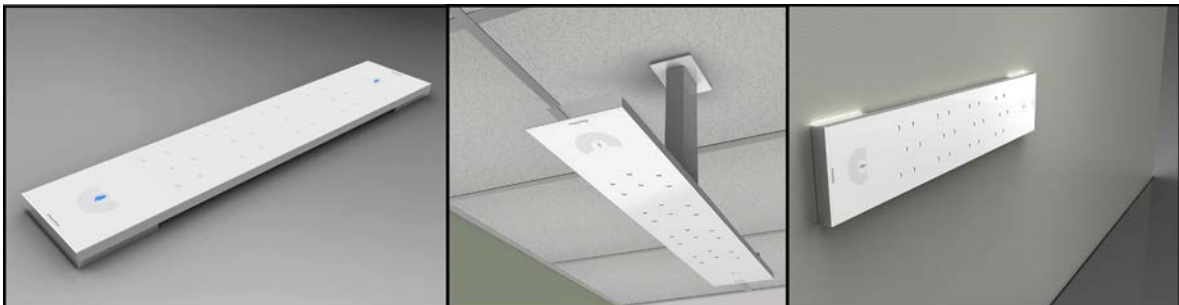


- Board Room
- Conference Room
- Training Center
- Courtroom
- House of Worship
- Telepresence

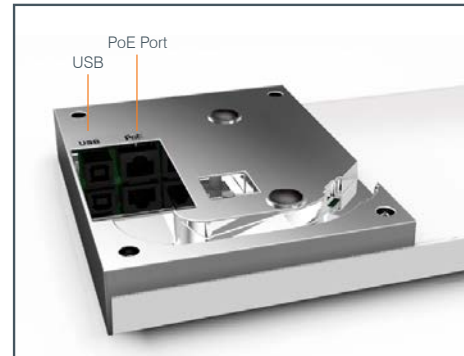
Features



- + Beamforming & adaptive steering technology
- + Next-generation Acoustic Echo Cancellation
- + 24 microphone elements
- + Mono and stereo modes for diverse applications
- + Flexible mounting for ceiling, wall and tabletop
- + Works with CONVERGE® Pro products: 880, 840T, 880T, 880TA
- + Expandable for larger room applications by daisy-chaining up to three arrays per CONVERGE® Pro unit
- + Adaptive acoustic processing automatically adjusts to room configuration for best possible audio pickup
- + Replaces up to 10 traditional microphones, with twice the pick-up range



BEAMFORMING MICROPHONE ARRAY CONNECTIONS



Functional Specifications

AUDIO

Acoustic Characteristics:

- 24 microphones
- Auto voice tracking
- Polar Pattern:** Custom
- Frequency Response:** 150Hz - 16kHz
- Signal to Noise Ratio:** > 70 dB
- AEC Tail time:** 128 ms
- Noise Cancellation:** 6 - 15 dB adjustable

Auto Mixer Parameters:

- Number of Open Microphones (NOM)
- First mic priority mode
- Last mic mode
- Maximum number of mics mode
- Ambient level
- Gate threshold adjust
- Off attenuation adjust
- Hold time
- Decay rate

Matrix Mixing Parameters:

- 1 Channel In
- 18 Expansion Bus In/Out

Beamforming Mic Array Configuration:

- Echo cancellation on/off
- Noise cancellation on/off
- Filters:
 - All Pass
 - Low Pass
 - High Pass
 - Notch
 - PEQ
- ALC on/off
- Gain adjust
- Mute on/off
- Auto gate/manual gate

POWER

- PoE IEEE 802.3AF-2003
- CAT-5 cable or higher
- 6 watts average power consumption

EXPANSION BUS IN/OUT

- Proprietary Network
- RJ-45 (2)
- Category 5 twisted-pair cable for 200 feet maximum cable length between any two CONVERGE Pro devices

USB

- Not currently supported. Available for future use

RS232

- Commands through CONVERGE Pro

CONFIGURATION & ADMINISTRATION SOFTWARE:

- CONVERGE Console (4.x)

WEIGHT

- 4.4 lbs (2.0kg)

MECHANICAL

- 30.0" x 1.00" x 5.75" (WxHxD) (762mm x 25.4mm x 146mm)

MOUNTING

- Ceiling mount kit (12" & 24" suspension column)
- Wall mount kit
- Table mount

ENVIRONMENTAL

- Operating Temperature
- 14° F/-10° C to 122° F/50° C ambient temperature

INSTALLATION

Optimum Mounting Height: About 8 - 10 foot ceiling

Optimum Coverage Distance:

- About 6 - 10 traditional cardioid mics
- About 2 - 3 ClearOne ceiling mic array
- About 8 - 10 foot radius

SUPPORTED CONVERGE PRO*

- CONVERGE Pro 840T
- CONVERGE Pro 880
- CONVERGE Pro 880T
- CONVERGE Pro 880TA

*Maximum 3 Beamforming microphone array per each supported CONVERGE Pro unit and maximum 16 units in one stack

PART NUMBERS

- 910-001-003: Beamforming Microphone Array
- 910-001-004: PoE Power Supply & Cables Kit for BFM Array
- 910-001-005-12: Ceiling Mount kit with 12" suspension column for BFM Array
- 910-001-005-24: Ceiling Mount kit with 24" suspension column for BFM Array
- 910-001-006: Wall Mount kit for BFM Array

ClearOne Contacts

North America
Tel: 801-975-7200
Toll Free: 800-945-7730
TechSales: 1-800-705-2103
Fax: 801-977-0087
sales@clearone.com

Europe & Oceania
Tel: +44 1454 616 977
global@clearone.com

Asia Pacific
Tel: +852 3590 4526
global@clearone.com

Latin America
Tel: 801-974-3621
global@clearone.com

Middle East
Tel: +852 3590 4526
global@clearone.com

Other product names may be registered trademarks of their respective owners who do not necessarily endorse ClearOne or ClearOne's products. All rights reserved. Information in this document subject to change without notice. © 2013 ClearOne. 802-000-100-31 Revision 1.2 July 2013