



CDPS-41SQN

4 x 1 HDMI Seamless Quad PIP Scaler



Operation Manual



DISCLAIMERS

The information in this manual has been carefully checked and is believed to be accurate. Cypress Technology assumes no responsibility for any infringements of patents or other rights of third parties which may result from its use.

Cypress Technology assumes no responsibility for any inaccuracies that may be contained in this document. Cypress also makes no commitment to update or to keep current the information contained in this document.

Cypress Technology reserves the right to make improvements to this document and/or product at any time and without notice.

COPYRIGHT NOTICE

No part of this document may be reproduced, transmitted, transcribed, stored in a retrieval system, or any of its part translated into any language or computer file, in any form or by any means—electronic, mechanical, magnetic, optical, chemical, manual, or otherwise—without express written permission and consent from Cypress Technology.

© Copyright 2011 by Cypress Technology.

All Rights Reserved.

TRADEMARK ACKNOWLEDGMENTS

All products or service names mentioned in this document may be trademarks of the companies with which they are associated.





SAFETY PRECAUTIONS

Please read all instructions before attempting to unpack, install or operate this equipment and before connecting the power supply.

Please keep the following in mind as you unpack and install this equipment:

- Always follow basic safety precautions to reduce the risk of fire, electrical shock and injury to persons.
- To prevent fire or shock hazard, do not expose the unit to rain, moisture or install this product near water.
- Never spill liquid of any kind on or into this product.
- Never push an object of any kind into this product through any openings or empty slots in the unit, as you may damage parts inside the unit.
- Do not attach the power supply cabling to building surfaces.
- Use only the supplied power supply unit (PSU). Do not use the PSU if it is damaged.
- Do not allow anything to rest on the power cabling or allow any weight to be placed upon it or any person to walk on it.
- To protect the unit from overheating, do not block any vents or openings in the unit housing that provide ventilation and allow for sufficient space for air to circulate around the unit.

REVISION HISTORY

VERSION NO.	DATE (DD/MM/YY)	SUMMARY OF CHANGE
RDV1	07/10/15	Preliminary Release



CONTENTS

1. Introduction.....	1
2. Applications.....	1
3. Package Contents	1
4. System Requirements.....	1
5. Features.....	2
6. Operation Controls and Functions.....	3
6.1 Front Panel.....	3
6.2 Rear Panel.....	4
6.3 Remote Control.....	5
6.4 RS-232 Protocols	6
6.5 OSD Menu	7
6.6 RS-232 and Telnet Commands	14
6.7 Telnet Control	23
6.8 WebGUI Control.....	25
7. Connection Diagram	30
8. Specifications	31





1. INTRODUCTION

The 4 x 1 HDMI Seamless Quad PIP Scaler is a high performance, high speed zooming/shrinking system that can be easily configure and control for quad or picture-in-picture video processing. Allowing 4 different input sources to be freely selected and arranged on one single display with supporting output resolution up to 1080p and audio up to 8CH 192kHz for both input and output. Screen setting hot keys with IR, RS-232, WebGUI and Telnet allows instant control and witching on the output display.

2. APPLICATIONS

- Broadcasting room and control
- Surveillance room and control
- Public advertisement and control
- Digital Presentation

3. PACKAGE CONTENTS

- 1 x 4 by 1 HDMI Seamless Quad PIP Scaler
- 1 x Remote Control (CR-124)
- 1 x 12V/3A DC Power Adaptor
- 1 x Rack Ear Sets
- Operational Manual

4. SYSTEM REQUIREMENTS

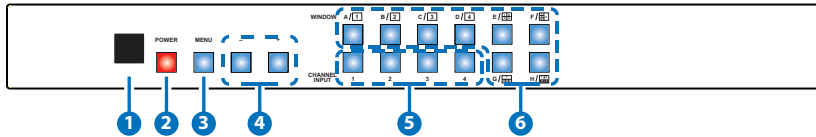
Input source equipments such as DVD/Blu-ray players and PC/NB devices and output HD TV/monitor.

5. FEATURES

- Seamless switching between channels and windows
- Zoom and Shrink 4CH input image and or to overlay them
- Supports PIP, POP and multi-windows display
- Supports OSD, RS-232, Telnet, Remote and on-panel controls
- Fade-In-Out, Chromakey, Mirror and Rotation (90° left & right and 180° up & down) functions
- 8 Screen setting hot keys and extra 4 customized favorite screen setting
- Supports individual channel size and position adjustment
- Supports output image logo display with self design logo file upload

6. OPERATION CONTROLS AND FUNCTIONS

6.1 Front Panel



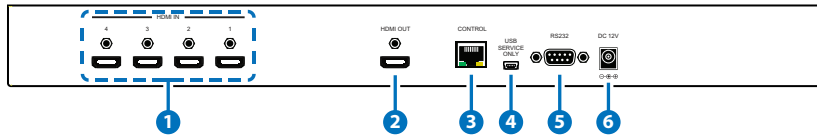
- 1 IR Window:** Accept IR signal from the device's remote control included in the package.
- 2 POWER:** Press this button to power ON the device or set it to standby mode.
- 3 MENU:** Press this button to bring up the OSD menu on screen.
- 4 -/+ Buttons:** Press these buttons to scroll down/up the OSD selections.
- 5 CHANNEL INPUT 1~4:** Press these buttons to rotate HDMI 1~4 input source on each channel to be display on screen. All channels can select the same input or each channel a different input.
- 6 WINDOW A~H:** Press these hot keys to select the screen setting where A~D are display a full screen of each channel and E~H are a different combination of a full screen setting with all 4 channels. Windows A~D's channel input selection is corresponding to channel input no. 1~4. That is, to change window A's input channel must press channel input 1's button. Channel input 2~4's button will not activate under window A's selection. Windows E~H's size are adjustable through the OSD menu setting and only window G is PIP(Picture in Picture) where E,F & H are POP (Picture out Of picture) settings.

Under window E~H when the size setting is overlapping one another, channel display sequence is CH4 > CH3 > CH2 > CH1.

That is, CH4 will cover CH3 and CH3 will cover CH2 and so on.

Under some display the borderline may have interference, adjusting display's motion setting may resolve the interference issue.

6.2 Rear Panel



- 1 HDMI IN:** Connect with source equipments such as DVD/Blu-ray players and or PC/NB devices.
- 2 HDMI OUT:** Connect with HD TV/monitor for output image display at 1080p.

3 CONTROL: Connect to an active network for Telnet control.

4 USB SERVICE ONLY: This slot is reserved for logo file upload and factory use only.

Logo file requirements: bmp file with color 256 only with size up to 512x512.

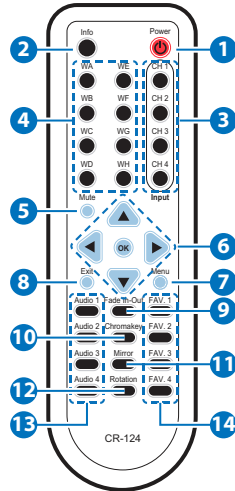
Upload procedure: Enter into OSD menu→IO Setup→LOGO Setting→Load New LOGO, now both Window A and CH 1's button LED will illuminate, plug this USB port to your PC/Laptop and wait for USB window to pop up.

Drag and load the logo file into the USB window or into "COPY LOGO" and upload will be automatically proceed. Wait for 1~2 minute the device will reboot itself and the upload is succed.

- 5 RS-232:** Connect from PC/NB with D-Sub 15pin cable for RS-232 command sending.
- 6 DC 12V:** Plug the 12V DC power supply into the unit and connect the adaptor to an AC outlet.

6.3 Remote Control

- 1 **Power:** Press this button to switch on the device or press it again to set it to standby mode.
- 2 **Info:** Press this button to show the device's firmware version.
- 3 **Input CH 1~4:** Press these buttons to rotate HDMI 1~4 input source on each channel to be display on screen
- 4 **WA~WH:** Press these hot keys to select the screen setting where WA~WD are display a full screen of each channel and WE~WH are a different combination of a full screen setting with all 4 channels.
- 5 **Mute:** Press this button to mute the audio from HDMI output port.
- 6 **▲▼▶◀ & OK Buttons:** Press this buttons to scroll through the OSD selection and press OK to enter and confirm the setting.
- 7 **Menu:** Press this button to enter into the OSD menu.
- 8 **Exit:** Press this button to exit the OSD menu or the OSD settings.
- 9 **FAV. 1~4:** Press these buttons to bring up the customized screen settings.
- 10 **Fade-In-Out*:** Press this button to switch on or off the Fade-in-out function.
- 11 **Chromakey*:** Press this button to enter into Chroma function where CH 1 is the background and CH 2 is the top image.
- 12 **Mirror*:** Press this button to display the screen in mirror image.
- 13 **Rotation*:** Press this button to rotate the image 90° left and right or 180° upside down.
- 14 **Audio 1~4:** Press these buttons to select audio from HDMI input source 1~4.



* Functions only work under Window A to D. The system will force to switch to Window A when operate under Window E~H.

6.4 RS-232 Protocols

HDMI SCALER	
Pin	Assignment
1	NC
2	Tx
3	Rx
4	NC
5	GND
6	NC
7	NC
8	NC
9	NC



REMOTE CONTROL (PC)	
Pin	Assignment
1	NC
2	Rx
3	Tx
4	NC
5	GND
6	NC
7	NC
8	NC
9	NC

Baud Rate: 115200bps

Data Bit: 8 bits

Parity: None

Flow Control: None

Stop Bit: 1



6.5 OSD Menu

MAIN MENU	1 ST LAYER	2 ND LAYER	3 RD LAYER	
I/O Setup	Output Resolution	480P, 579P, 720P50/60, 1080P24/25/30/50/60, 1024x768, 1280x800, 1280x1024, 1366x768, 1440x900, 1600x900, 1600x1200, 1680x1050, 1920x1200, NATIVE		
		Menu Exit		
	Output Windows	Window A		
		Window B		
		Window C		
		Window D		
		Window E		
		Window F		
		Window G		
		Window H		
		Win Fav 1		
		Win Fav 2		
		Win Fav 3		
		Win Fav 4		
	Menu Exit			
	OSD Settings	Info Display		On/ Off
		H Offset		0~20 (5)
		V Offset		0~20 (5)
		Timeout		Off~50 (10)
		Transparent		0~10 (2)
Menu Exit				
	Logo Display		On/ Off	
	Logo H-Pos		0~74 (73)	

MAIN MENU	1 ST LAYER	2 ND LAYER	3 RD LAYER
	Logo Settings	Logo V-Pos	0~68 (6)
		Load Def Logo	On/Off
		Load New Logo	On/Off
		Menu Exit	
	Menu Exit		
Image Adjust	Brightness Adjust	CH1	0~100 (50)
		CH2	0~100 (50)
		CH3	0~100 (50)
		CH4	0~100 (50)
		Value Reset	
		Menu Exit	
	Contrast Adjust	CH1	0~100 (50)
		CH2	0~100 (50)
		CH3	0~100 (50)
		CH4	0~100 (50)
		Value Reset	
		Menu Exit	
	Hue Adjust	CH1	0~100 (50)
		CH2	0~100 (50)
		CH3	0~100 (50)
		CH4	0~100 (50)
		Value Reset	
		Menu Exit	
	Saturation	CH1	0~100 (50)
		CH2	0~100 (50)
		CH3	0~100 (50)
		CH4	0~100 (50)
		Value Reset	
		Menu Exit	

MAIN MENU	1 ST LAYER	2 ND LAYER	3 RD LAYER
	Image Still Adjust	CH1	On/ Off
		CH2	On/ Off
		CH3	On/ Off
		CH4	On/ Off
		All Channel	On/ Off
		Menu Exit	
	Image Swap	CH 1 CH 2 Swap.	
		CH 1 CH 3 Swap.	
		CH 1 CH 4 Swap.	
		CH 2 CH 3 Swap.	
		CH 2 CH 4 Swap.	
		CH 3 CH 4 Swap.	
Window Setup	Channel 1/2/3/4 Select	Size Wxxx Hxxx	Width Unit
			Width Ten
			Width Hundred
			Height Unit
			Height Ten
			Height Hundred
			Value Rest
			Menu Exit
			Position Wxxx Hxxx
	Width Ten		
	Width Hundred		
	Height Unit		
	Height Ten		
	Height Hundred		
	Value Rest		
	Menu Exit		
	Image Output	On/Off	

MAIN MENU	1 ST LAYER	2 ND LAYER	3 RD LAYER
		Priority	1~4
		Window Reset	
		Menu Exit	
	Label Select	Video 1	Rename up to 9 characters
		Video 2	Rename up to 9 characters
		Video 3	Rename up to 9 characters
		Video 4	Rename up to 9 characters
		Menu Exit	
	Favours Store	FAV 1 Store	On/ Off
		FAV 2 Store	On/ Off
		FAV 3 Store	On/ Off
		FAV 4 Store	On/ Off
		Menu Exit	
	Menu Exit		
	Window Convert	Channel 1/2/3/4 Convert	Mirror
Fade In-Out			Off /1.0/1.1/1.2/1.3/1.4/ 1.5/1.6/1.7/1.8/1.9/2.0/ 2.1/2.2/2.3/2.4/2.5/2.6/ 2.7/2.8/2.9/3.0
Rotation			L90/R90/180/ Off
Window Reset			
Menu Exit			

MAIN MENU	1 ST LAYER	2 ND LAYER	3 RD LAYER
ChromaKey Setup*	User 1	Minimum for R/G/B	000~255 (233)
		Maximum for R/G/B	222~255(255)
	User 2	Minimum for R/G/B	000~255 (0)
		Maximum for R/G/B	222~255(255)
	White	Minimum for R/G/B	000~255 (233)
		Maximum for R/G/B	222~255(255)
	Yellow	Minimum for R/G/B	000~255 (233/233/0)
		Maximum for R/G/B	222~255(255/255/16)
	Cyan	Minimum for R/G/B	000~255 (233/0/233)
		Maximum for R/G/B	222~255(255/16/255)
	Green	Minimum for R/G/B	000~255 (233/0/0)
		Maximum for R/G/B	222~255(255/16/16)
	Magenta	Minimum for R/G/B	000~255 (0/233/233)
		Maximum for R/G/B	222~255(16/255/255)
	Red	Minimum for R/G/B	000~255 (0/233/0)
		Maximum for R/G/B	222~255(0/233/0)
	Blue	Minimum for R/G/B	000~255 (0/0/232)
		Maximum for R/G/B	222~255(16/16/255)
Black	Minimum for R/G/B	000~255 (0)	
	Maximum for R/G/B	222~255(16)	
Switch	On/ Off		
Exit			
	IP Mode	Static /DHCP	
	Static Set	IP/Mask/Gate	
	Byte1 High	192	
	Byte2	168	
	Byte3	1	
	Byte4 Low	50	

MAIN MENU	1 ST LAYER	2 ND LAYER	3 RD LAYER
Ethernet Setup	Time Out	OFF /10/20/30/40/50/60 min	
	Re-Link	No /Yes	
	Exit		
	Static/DHCP IP	LINKED/NOT LINKED	
	IP	IP/Mask/Gate	
	Mask	xxx. xxx. xxx. xxx	
	Gate	xxx. xxx. xxx. xxx	
	Mac	xxx. xxx. xxx. xxx	
	Sink HDMI/DVI		
Audio Setup	Audio Source	Mute/CH1/2/3/4	
Sys Reset	On/ Off		
Information	Screen HDMI		
	Native xxxxxx		
	F/W version vx.xx		
	F/W Upgrade		
	Menu Exit		
Menu Exit			

Note: *Bold/italic fonts and () figures are factory default setting figures.*

* Chromakey Setup works only under CH1 & CH2 where CH1 is the background and CH2 is the top layer. This special function is designed for picture overlap video such as news reporter, weather forecast or educational video taping. CH2 the top layer's background color is usually a single color which can be easy for remove. RGB's setting is for CH2 video where the minimum setting



figures cannot be greater than the maximum figures and the maximum figures cannot be lower than the minimum setting figures. When input 1 or 2 has no source connection a warning message will appear on OSD.

6.6 RS-232 and Telnet Commands

COMMAND	DESCRIPTION	PARAMETER
?	PRINTS ALL AVAILABLE RS-232/TELNET COMMANDS TO THE SCREEN	
HELP	PRINTS ALL AVAILABLE RS-232/TELNET COMMANDS TO THE SCREEN!	
SPOW 0/1	SET THE UNIT POWER ON/OFF	0=OFF,1=ON
RPOW	SHOW CURRENT POWER STATE	
SRES 0~18	SET OUTPUT RESOLUTOIN	(0) 480p 60Hz, (1) 576p 50Hz,(2) 720p 50Hz, (3) 720p 60Hz, (4) 1080p 24Hz, (5) 1080p 25Hz, (6) 1080p 30Hz, (7) 1080p 50Hz, (8) 1080p 60Hz, (9) 1024x768 60Hz, (10) 1280x800 60Hz, (11) 1280x1024 60Hz, (12) 1366x768 60Hz, (13) 1440x900 60Hz, (14) 1600x900 60Hz, (15) 1600x1200 60Hz, (16) 1680x1050 60Hz, (17) 1920x1200 60Hz, (18) Native
RRES	SHOW CURRENT OUTPUT RESOLUTION	
SIOSDD 0/1	ENABLE/DISABLE ONSCREEN INFORMATION DISPLAY	0=OFF,1=ON (0)

COMMAND	DESCRIPTION	PARAMETER
RIOSDD	SHOW INFORMATION OSD DISPLAY CURRENT STATE	
SOSDH 0~20	SET OSD HORIZONTAL POSITION	0~20 (5)
ROSDH	SHOW OSD HORIZONTAL POSITION CURRENT	
SOSDV 0~20	SET OSD VERTICAL POSITION	0~20 (5)
ROSDV	SHOW OSD VERTICAL POSITION CURRENT	
SOSDT 0, 5~50	SET OSD DISPLAY TIME	0=OSD OFF OSDTIME (5~50 sec) DEFAULT=10sec
ROSDT	SHOW OSD DISPLAY CURRENT TIME	
SOSDG 0~10	SET OSD TRANSPARENT VALUE	0~10 (5)
ROSDG	SHOW OSD TRANSPARENT CURRENT VALUE	
SBRI N M	SET BRIGHTNESS VALUE FOR INPUT CHANNEL	N=0/All, 1~4/CHANNEL M=0~100 (50)
RBRI	SHOW BRIGHTNESS CURRENT VALUE FOR INPUT CHANNEL	0=All, 1~4
SCON N M	SET CONTRAST VALUE FOR INPUT CHANNEL	N=0/All, 1~4/CHANNEL M=0~100 (50)
RCON	SHOW CONTRAST CURRENT VALUE!!	0=All, 1~4

COMMAND	DESCRIPTION	PARAMETER
SSAT N M	SET SATURATATION VALUE FOR INPUT CHANNEL!!	N=0/All, 1~4/CHANNEL M=0~100 (50)
RSAT	SHOW SATURATATION CURRENT VALUE	0=All, 1~4
SHUE N M	SET HUE VALUE FOR INPUT CHANNEL	N=0/All, 1~4/CHANNEL M=0~100 (50)
RHUE	SHOW HUE CURRENT VALUE	0=All, 1~4
SSTILL N M	SET IMAGE STILL	N=0/All, 1~4/CHANNEL M=0/OFF, 1/ON(0)
RSTILL	SHOW IMAGE CURRENT STILL STATUS	0=All, 1~4
SSWAP (0~5)	SET OUTPUT IMAGE SWAP	0= CH1 CH2 SWAP. 1= CH1 CH3 SWAP. 2= CH1 CH4 SWAP. 3= CH2 CH3 SWAP. 4= CH2 CH4 SWAP. 5= CH3 CH4 SWAP
RSWAP	SHOW IMAGE CURRENT INPUT SOURCE	0=CH1 CH2 CURRENT INPUT SOURCE 1=CH1 CH3 CURRENT INPUT SOURCE 2=CH1 CH4 CURRENT INPUT SOURCE 3=CH2 CH3 CURRENT INPUT SOURCE 4=CH2 CH4 CURRENT INPUT SOURCE 5=CH3 CH4 CURRENT INPUT SOURCE

COMMAND	DESCRIPTION	PARAMETER
SPIRE	RESET BRIGHTNESS, CONTRAST, SATURATION, HUE. ALL CHANNEL VALUE TO DEFAULE	
SIMRE 1~4	RESET BRIGHTNESS or CONTRAST or SATURATION or HUE, VALUE TO DEFAULE	1=BRIGHTNESS, 2=CONTRAST, 3=SATURTATION, 4=HUE
SHSIZE N M	SET IMAGE HORIZONTAL SIZE	N=1~4 M=0~X HORIZONTAL SIZE FOR CURRENT RESOLUTION
RHSIZE	SHOW IMAGE HORIZONTAL SIZE CURRENT VALUE	1~4 CHANNEL HORIZONTAL SIZE
SVSIZE N M	SET IMAGE VERTICAL SIZE	N=1~4 M=0~X VERTICAL PIXEL FOR CURRENT RESOLUTION
RVSIZE	SHOW IMAGE VERTICAL SIZE CURRENT VALUE	1~4 CHANNEL VERTICAL SIZE
SHPOS N M	SET HORIZONTAL POSITION OF SPECIFIED CHANNEL!!	N=1~4 M=0~X HORIZONTAL PIXEL FOR CURRENT RESOLUTION
RHPOS	SHOW IMAGE HORIZONTAL POSITION CURRENT VALUE!!	1~4 CHANNEL HORIZONTAL POSITION
SVPOS N M	SET VERTICAL POSITION OF SPECIFIED CHANNEL!!	N=1~4 M=0~X VERTICAL PIXEL FOR CURRENT RESOLUTION

COMMAND	DESCRIPTION	PARAMETER
RVPOS	SHOW IMAGE VERTICAL POSITION CURRENT VALUE!!	1~4 CHANNEL VERTICAL POSITION
SIMAGE N M	SET OUTPUT CHANNEL IMAGE ON/OFF!!	N= 1~4 M=0/OFF, 1/ON
RIMAGE	SHOW OUTPUT CHANNEL IMAGE CURRENT	(0)=ALL CHANNEL, (1~4)=CHANNEL 1~4
SPRI N M	SET WINDOWS PRIORITY	N= CHANNEL 1~4 M= PRIORITY 1~4
RPRI	SHOW WINDOWS PRIORITY	0=ALL CHANNEL, 1~4=CHANNEL 1~4
SLABEL N M	ASSIGN A PRESET NAME	N= CHANNEL 1~4 M= A~Z/0~9....
RLABEL	SHOW PRESET NAME TO SCREEN!!	0=ALL CHANNEL, 1~4=CHANNEL 1~4
SSTORE 1~4	SAVE THE CURRENT WINDOW TO FAV1~FAV4.	1~4= FAV1~FAV4
SRECALL 1~12	SET A OUTPUT WINDOWS TO WINDOWS A~WINDOWS FAV4.	(1)WA, (2)WB, (3)WC, (4)WD, (5)WE, (6)WF, (7)WG, (8)WH, (9) FAV1, (10)FAV2, (11)FAV3, (12)FAV4.
SMIRROR 0/1	SET ENABLE/DISABLE MIRROR EFFECT	0=OFF,1=ON
RMIRROR	SHOW MIRROR CURRENT TO SCREEN!!	

COMMAND	DESCRIPTION	PARAMETER
SFADE 0~21	SET FADE IN-OUT TIME	(0) OFF, (1) 1.0 s, (2) 1.1 s, (3) 1.2 s, (4) 1.3 s, (5) 1.4 s, (6) 1.5 s, (7) 1.6 s, (8) 1.7 s, (9) 1.8 s, (10) 1.9 s, (11) 2.0 s, (12) 2.1 s, (13) 2.2 s, (14) 2.3 s, (15) 2.4 s, (16) 2.5 s, (17) 2.6 s, (18) 2.7 s, (19) 2.8 s, (20) 2.9 s, (21) 3.0 s (0)
RFADE	SHOW FADE IN-OUT CURRENT TO SCREEN!!	
SROTATE 0~3	SET VIDEO ROTATION VIDEO TO PRESET POSITIONS	0=ROTATE OFF, 1=R90, 2=180 3=L90(0)
RROTATE	SHOW VIDEO ROTATION CURRENT TO SCREEN	
SCHRKS 0~9	SET CHROMA KEY COLOR FOR CHROMA KEY!!	(0) USER1,(1)USER2,(2) White,(3)Yellow,(4) Cyan,(5) Green, (6) Magenta,(7) Red,(8) Blue,(9)Black(0)
RCHRKS	SHOW CHROMAKEY KEY COLOR CURRENT TO SCREEN!!	
SCHRC N M	SET THE R,G,B COLOR RANGE FOR THE CHROMA KEY	N=0~11, (0)USER1 G MAX, (1)USER1 G MIN, (2)USER1 R MAX, (3) USER1 R MIN (4)USER1 B MAX, (5)USER2 B MIN, (6)USER2 G MAX, (7) USER2 G MIN, (8)USER2 B MAX, (9)USER2 B MIN (10)USER2 R MAX, (11) USER2 R MIN M= VALUE 0~255

COMMAND	DESCRIPTION	PARAMETER
RCHRC 0~9	SHOW CHROMAKEY CURRENT TO SCREEN	(0)USER1,(1)USER2,(2) White,(3)Yellow,(4) Cyan,(5) Green, (6) Magenta,(7) Red,(8) Blue,(9)Black
SCHRSW 0/1	SET ENABLE/DISABLE CHROMAKEY EFFECT	0=OFF, 1=ON (0)
RGHRSW	SHOW CHROMAKEY EFFECT CURRENT TO SCREEN	
SIPM 0/1	SET IP MODE TO DHCP OR STATI	0=0DHCP, 1=STATIC (1)
RIPM	SHOW CURRENT IP MODE TO SCREEN	
SIPADD N	SET STATIC IP ADDRESS	N=0~255
RIPADD	SHOW STATIC CURRENT IP ADDRESS TO SCREEN	
SMAADD N	SET STATIC SUBNET ADDRESS	N=0~255
RMAADD	SHOW STATIC CURRENT SUBNET ADDRESS TO SCREEN	
SGAADD N	SET STATIC GATEWAY ADDRESS	N=0~255
RGGAADD	SHOW STATIC CURRENT GATEWAY ADDRESS TO SCREEN	

COMMAND	DESCRIPTION	PARAMETER
SETHT 0~6	SET ETHERNET TIMEOUT!!	(0)OFF, (1)10 MINUTE, (2)20 MINUTE, (3)30 MINUTE, (4)40 MINUTE, (5)50 MINUTE, (6)60 MINUTE. (0)
REHT	SHOW ETHERNET TIMEOUT CURRENT TO SCREEN	
RELINK	RELINK THE UNIT IN 2 SECONDS	
SMAC 0~9, A~F	SET MAC ADDRESS!!	0~9, A~F
RMAC	SHOW CURRENT MAC ADDRESS TO SCREEN	
IPCONFIG	SHOW ETHERNET ADDRESS TO SCREEN	
DEFAULT	RESET THE UNIT TO FACTORY DEFAULTS	
SVICH N M	SET OUTPUT VIDEO CHANNEL TO SPECIFIED SOURCE!!	N=0~4, 0=ALL CHANNEL, 1~4=OUTPUT CHANNEL M=1~4 VIDEO SOUREC
RVICH	SHOW OUTPUT CHANNEL THE VIDEO SOUREC	
SMUTE 0/1	SET MUTE AUDIO	0=MUTE, 1= UNMUTED (1)
RMUTE	SHOW CURRENT MUTE TO SCREEN!!	
SAUDIO 1~4	SET OUTPUT AUDIO TO SPECIFIED SOURCE	1~4=INPUT AUDIO

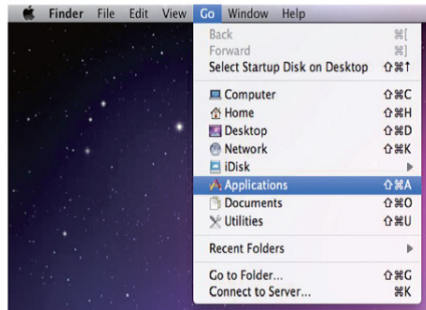
COMMAND	DESCRIPTION	PARAMETER
RAUDIO	SHOW OUTPUT AUDIO SOURCE TO SCREEN	
SCHRE 0~4	RESET THE WINDOWS E ~ WINDOWS FAV4 CH1~CH4 SETTINGS TO FACTORY DEFAULTS	0=RESET ALL CHANNEL, 1~4=RESET CHANNEL 1~4
SWICORE	RESET THE WINDOWS A ~ WINDOWS D SETTINGS TO FACTORY DEFAULTS	
RBIOS	SHOW BIOS VERSION TO SCREEN	
RLOGOD	SHOW DISPLAY LOGO CURRENT STATE	
SLOGOD 0/1	ENABLE/DISABLE DISPLAY LOGO	0=OFF, 1=ON
RLOGOH	SHOW LOGO HORIZONTAL POSITION CURRENT	
SLOGOH N	SET LOGO HORIZONTAL POSITION	N=HORIZONTAL PIXEL FOR CURRENT RESOLUTION
RLOGOV	SHOW LOGO VERTICAL POSITION CURRENT	
SLOGOV N	SET LOGO VERTICAL POSITION	N=VERTICAL PIXEL FOR CURRENT RESOLUTION
SDEFLOGO	LOAD DEFAULT LOGO	
SNEWLOGO	LOAD NEW LOGO	

6.7 Telnet Control

Before attempting to use the telnet control, please ensure that both the Scaler (via the 'CONTROL' port) and the PC/Laptop are connected to the active networks.

To access the telnet control in Windows 7, click on the 'Start' menu and type "cmd" in the Search field then press enter Under Windows XP go to the 'Start' menu and click on "Run", type "cmd" with then press enter.

Under Mac OS X, go to Go→Applications→Utilities→Terminal See below for reference.



Once in the command line interface (CLI) type "telnet", then the IP address of the unit and hit enter.

Note: The IP address of the Scaler can be found under Ethernet Setup on the device's OSD menu.

```
Microsoft Windows [Version 6.1.7601]
Copyright (c) 2009 Microsoft Corporation. All rights reserved.

C:\Users\Administrator>telnet 192.168.5.80 23
```

This will bring us into the device which we wish to control. Type "?" to lists all the available commands.

```
Command List
-----
HELP
SPOW
RPOW
SRES
BRES
SLOGDD
RLOGDD
SOSDH
ROS DH
ROS DU
ROS DU
ROS DT
ROS DT
ROS DG
ROS DG
SLOGOD
RLOGOD
SLOGOH
RLOGOH
SLOGOU
RLOGOU
SDEPLOGO
RDEPLOGO
SBRI
RBRI
SCON
RCON
SBAT
RBAT
SHUE
RHUE
SSTILL
RSTILL
S$MAP
R$MAP
SPIRE
SPIRE
S$TIZE
R$TIZE
S$USIZE
R$USIZE
SHPOS
RHPOS
SUFPOS
RUFPOS
SIMAGE
RIMAGE
SPRI
RPRI
SLABEL
RLABEL
STORE
SRECALL
RRECALL
S$TERROR
R$TERROR
SFADE
RFADE
SROTATE
RROTATE
SCHRS
RCHRS
SCHRC
RCHRC
SCHRSU
RCHRSU
SIPM
RIPM
SIPADD
RIPADD
SMADD
RMADD
SGRADD
RGRADD
SETH
RETH
RELINK
SWAC
RWAC
IPCONFIG
DEFAULT
SWITCH
RUTCH
SMUTE
RMUTE
SAUDIO
RAUDIO
SCHE
RSCHE
S$CORE
R$CORE
RBIOS
```



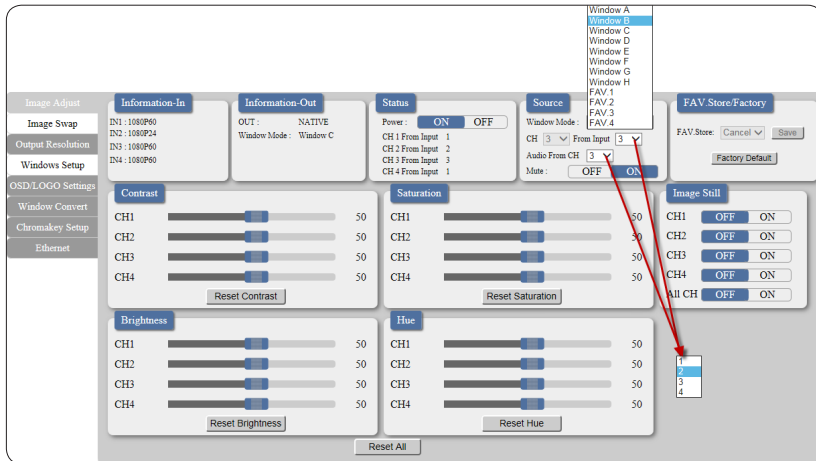
Type "IPCONFIG" To show all IP configurations. To reset the IP, type "IPMODE" to set static IP/DHCP (For a full list of commands, see Section 6.6).

Note: All the commands will be not executed unless followed by a carriage return. Commands are case-insensitive. If the IP is changed then the IP Address required for Telnet access will also need to be change accordingly. A power relink is also required for every IP change.

6.8 WebGUI Control

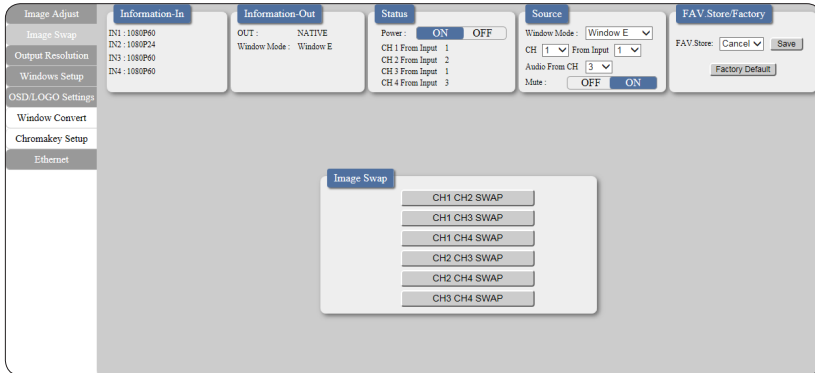
On a PC/Laptop that is connected to an active network as the Scaler, open a web browser and type device's IP address on the web address entry bar. The browser will display the device's Image Adjust, Output Resolution, and ... etc.

Click on the 'Image Adjust' tab to control power, Window Mode and the windows settings.

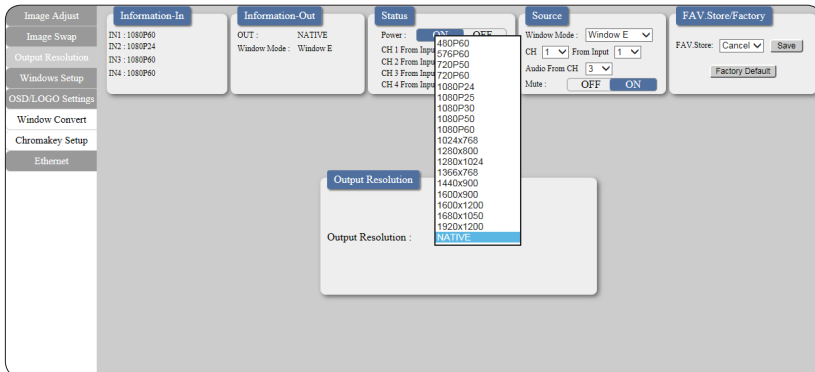


Click on 'Image Swap' to swap output channel's image display instantly.

Note: This function is only available under window E~H.



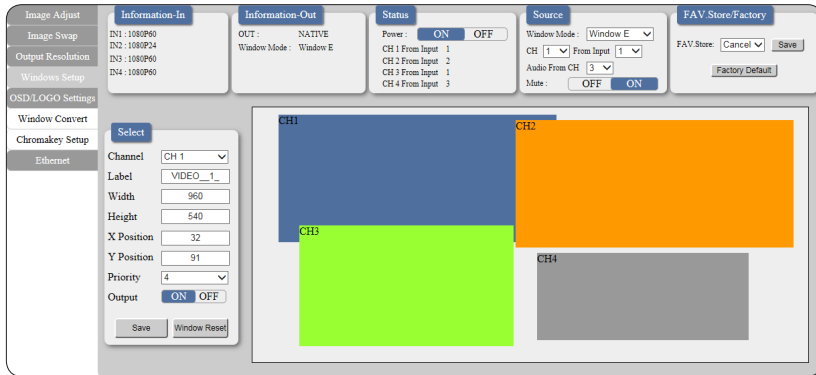
Click on the 'Output Resolution' tab to set the output display resolution.



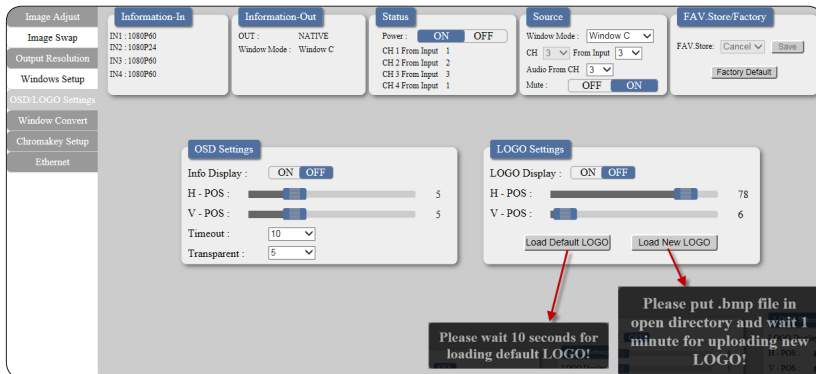


Clicking on the 'Windows Setup' tab to set the output display fomate.

Note: This function is only available under window E~H.

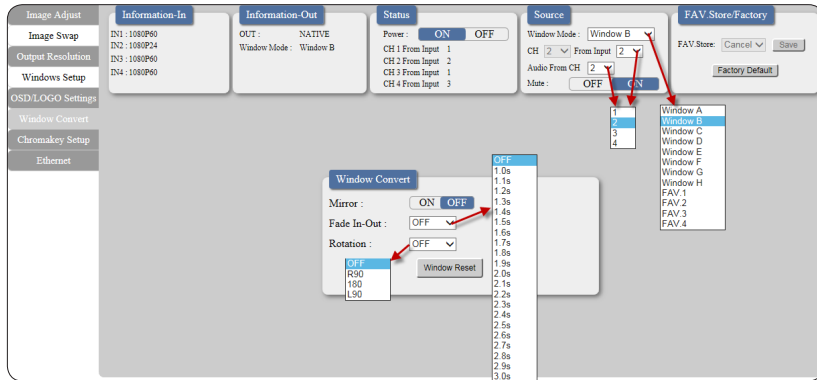


Clicking on the 'OSD/LOGO Settings' tab to set the OSD & LOGO's function and position. Load and upload logo can also be done under this page. Upload procedure please refers to section 6.2 USB SERVICE ONLY.



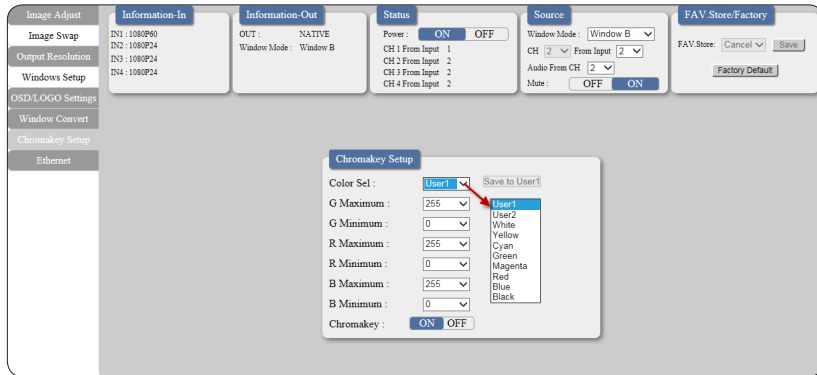
Clicking on the 'Window Convert' tab to set the output display angle.

Note: This function is only available under window A~D.



Clicking on the 'Chromakey Setup' tab to set the output display color.

Note: This function is only available under window A~D.

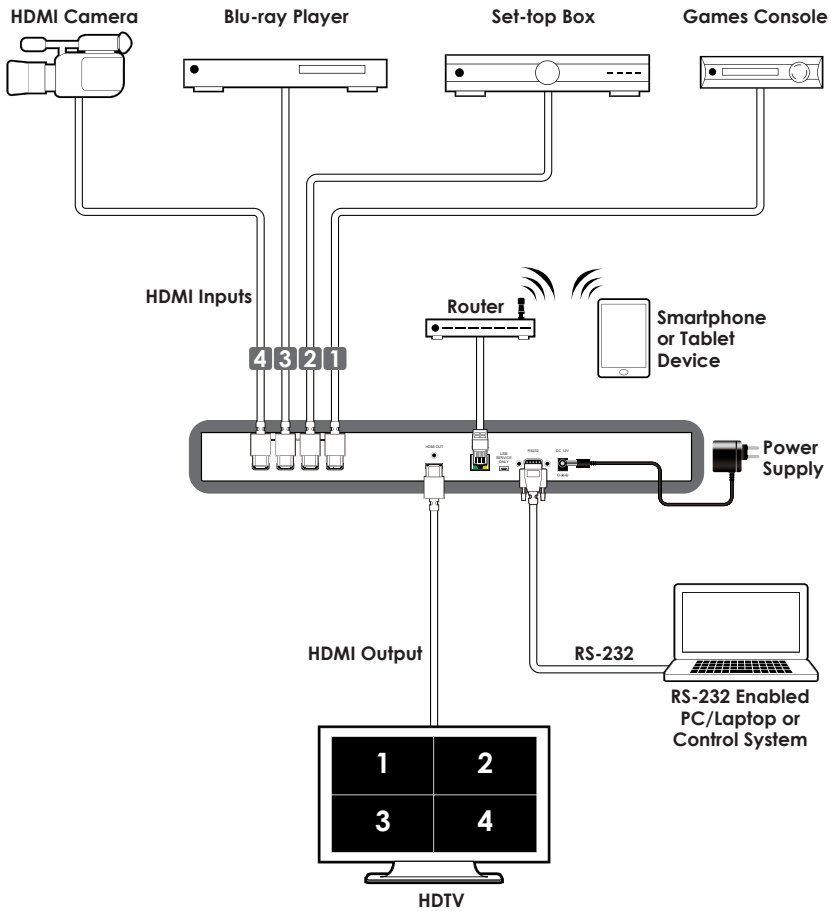




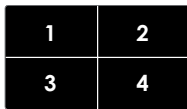
Clicking on the 'Ethernet' tab to reset the IP configuration. The system will ask for a reboot of the device every time when any of the settings is changed. The IP address needed to access the WebGUI control will also need to be changed accordingly on the web address entry bar.

The screenshot displays the CYP WebGUI interface. On the left is a sidebar with navigation tabs: Image Adjust, Image Swap, Output Resolution, Windows Setup, OSD LOGO Settings, Window Convert, Chromakey Setup, and Ethernet. The main area is divided into several panels: Information-In (IN1-4: 1080P60), Information-Out (OUT: NATIVE, Window Mode: Window E), Status (Power: ON/OFF, CH 1-4 From Input), Source (Window Mode: Window E, CH 1-2 From Input, Audio From CH 1-2, Mute: OFF/ON), and FAV Store/Factory (Cancel, Save, Factory Default). The Ethernet configuration panel is active, showing:
- DHCP: checked
- MAC: F8-22-85-00-05-40
- IP Address: 192.168.5.234
- Netmask: 255.255.255.0
- Gateway: 192.168.1.254
- Telnet Timeout: Off (dropdown menu with options: 10 min, 20 min, 30 min, 40 min, 50 min, 60 min)
- A 'Save Changes' button is located at the bottom right of the Ethernet panel.

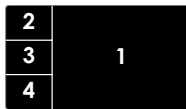
7. CONNECTION DIAGRAM



Screen Configurations:



Window E
(POP)



Window F
(POP)



Window G
(PIP)



Window H
(POP)



8. SPECIFICATIONS

Video Bandwidth	225MHz/6.75Gbps
Input Ports	4 x HDMI
Output Port	1 x HDMI
Supports Input Resolution	PC: VGA~WUXGA, HD: 480i~1080p
Supports Output Resolution	1080p@60
HDMI Input Cable Distance	Up to 15M/1080p@12 bits
HDMI Output Cable Distance	Up to 15M/1080p@8 bits
Supports Sampling Rate	32~192kHz
ESD Protection	Human body model: ±8kV (air-gap discharge) ±4kV (contact-gap discharge)
Power Supply	12V/3A DC (US/EU standards, CE/FCC/UL certified)
Dimensions	436mm(W) x 247mm(D) x 44mm(H)
Weight	2200g
Chassis Material	Aluminum
Silkscreen Color	Black
Operating Temperature	0 °C ~ 40 °C / 32 °F ~ 104 °F
Storage Temperature	-20 °C ~ 60 °C / -4 °F ~ 140 °F
Relative Humidity	20 ~ 90 % RH (non-condensing)
Power Consumption	18 W

HDMI SUPPORTED RESOLUTIONS	INPUT	OUTPUT
640x480@60,72,75,85	✓	
800x600@56,60,72,75,85	✓	
1024x768@60,70,75,85	✓	V@60
1360x768@60	✓	
1280x768@60,75	✓	
1280x800@60		✓
1280x1024@60,75	✓	V@60
1366x768@60	✓	✓
1440x900@60		✓
1600x900@60		✓
1600x1200@60	✓	✓
1680x1050@60		
1920x1200@60	✓	
480i60	✓	
576i50	✓	
480p60	✓	✓
576p50	✓	✓
720p50	✓	✓
720p60	✓	✓
1080i50	✓	
1080i60	✓	
1080p24	✓	✓
1080p25		✓
1080p30		✓
1080p50	✓	✓
1080p60	✓	✓



CYPRESS TECHNOLOGY CO., LTD

Home page: <http://www.cypress.com.tw>

MPM-CDPS41SQN