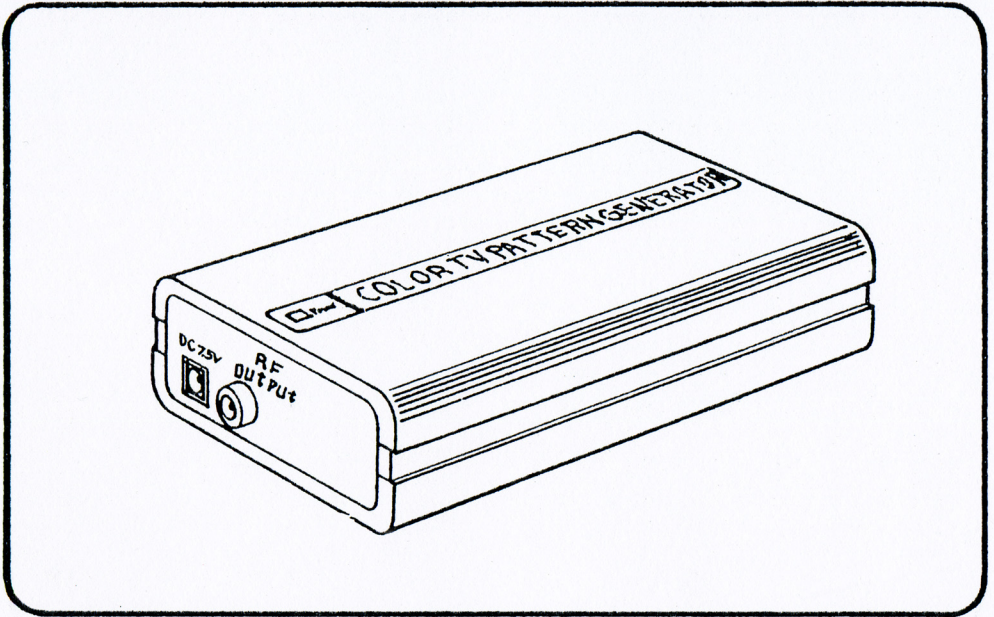


COLOR TV PATTERN GENERATOR

G-200N (NTSC)
CG-200P (PAL B,G,I)
CG-200PM(PAL M)

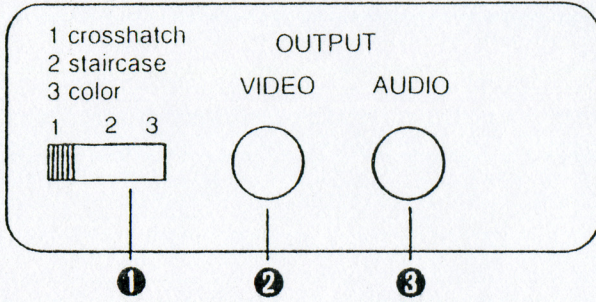
G-200PD (PAL D)
CG-200PN (PAL N)
AVT-8220N
AVT-8220P



FEATURES

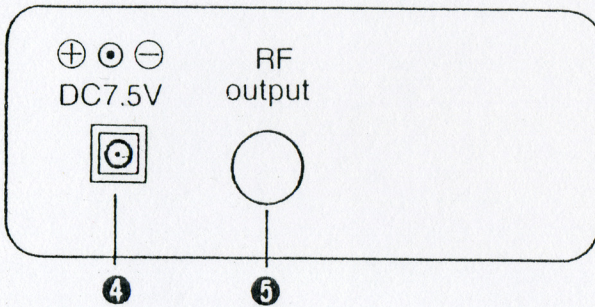
- The CG-200N/P/PM/PD/PN are color pattern generator, The CG-200N for NTSC system, CG-200P/PM/PD/PN for PAL system.
- The pattern generators include full field color bar, staircase and crosshatch pattern. A typical application is for the adjusting and servicing of TV and VTRS.
- Compact light weight and AC adaptor operated.
- RF and video/Audio output.

FRONT PANEL



1. Pattern select
2. Video output
3. Audio output

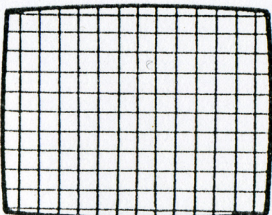
REAR PANEL



4. DC power supply 7.5V input
5. RF output

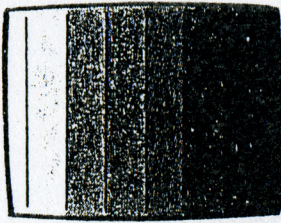
TEST PATTERN

1. Crosshatch



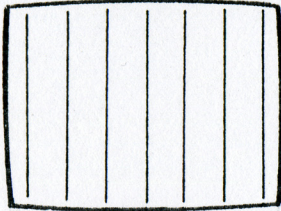
15 vertical and 11 horizontal lines. is used for checking and realigning. focus. linearity. pincushion. and static. dynamic convergence.

2. Staircase



a full-screen linear staircase signal with 8 equal steps from white to black is used to check linearity of the video amplifier or grey-scale setting, and adjust white balance.

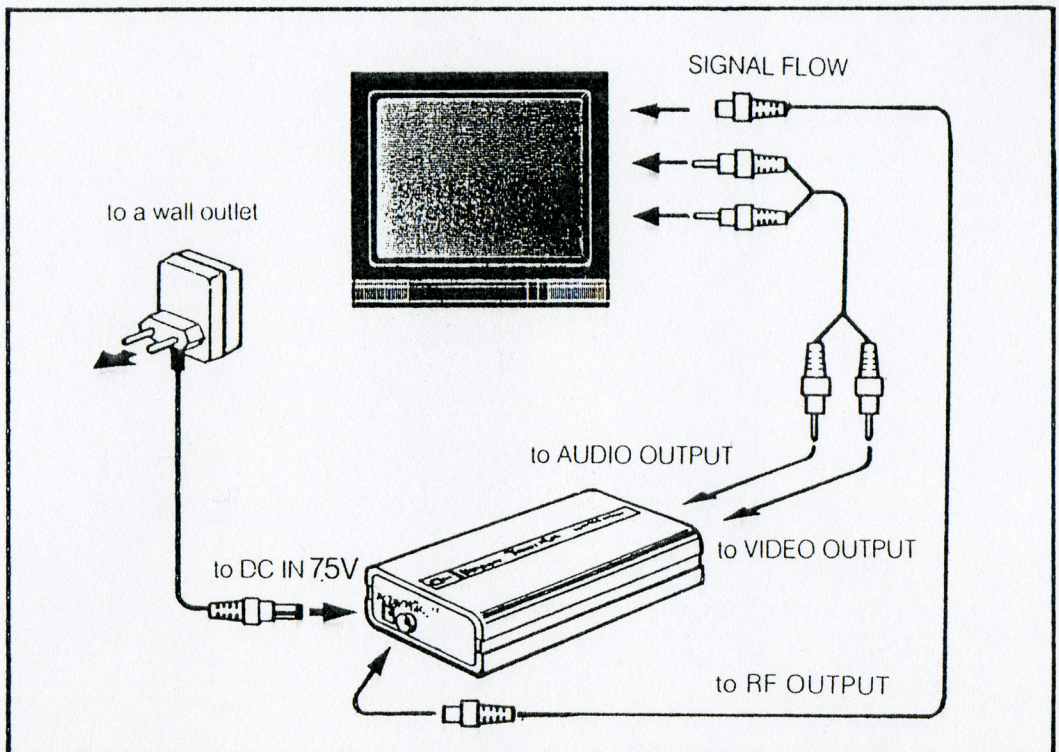
3. Standard color BAR



THE vertical BARS are white, yellow cyan, green, magenta, red, blue and black.

THE color bar pattern provides sufficient information for a good overall check on color performance, including checks on burst keying, sub-carrier, regeneration, RGB amplifiers, delay color versus B/W signal and saturation.

CONNECTION DIAGRAMS



SPECIFICATIONS

	200N	200P	200PM	200PN	200PD
Color Bar	75% White, Yellow, Cyan, Green, Magenta, Red, Blue, and Black				
Staircase	8 equal Steps from white to black level				
Crosshatch	15(V), 11(H) White-Lines				
RF output	CH 3 or CH 13	CH 11 or CH 36,40	CH 3		CH 4
Video output	1 Vp-p 75 ohm				
Scanning	Interlace				
Line frequency	15734Hz	15625Hz	15734Hz	15625Hz	
Number of lines	525	625	525	625	
Field frequency	60 Hz	50 Hz	60 Hz	50 Hz	
Sync' polarity	Negative				
Sub-carrier frequency	3.579545 MHz	4.433619 MHz	3.575611 MHz	3.582056 MHz	4.433619 MHz
Sound carrier frequency	4.5 MHz	B,G(5.5 MHz) I (6 MHz)	4.5 MHz		6.5 MHz
Sound Modulation	FM. Internal 1 KHz				
Audio output	1 Vp-p Sine Wave				
Power Supply	7.5VDC 110 VAC	7.5 VDC 220/240VAC			
Weight	300 grams				
Dimensions	90(W)x 40(H) x 155(D) mm				
Accessory	One Video/Audio cables, AC adaptor				

CG-200P RF standard output is PAL G CH36, or PAL I CH40, or PAL B CH 11.

All design and specifications are subject to change without notification as product improvements occur.