

AUDAC

CIELO200

20 x CS55 + COM12 + PDM200

Set Solutions

With the extensive range of speakers and amplifiers it is possible to find a suitable solution for nearly every situation. Because it is often difficult to find an appropriate combination of matching speakers and amplifiers, we made a selection of the most popular ready-to-use sets that can be used for a wide variation of applications.

Some sets are meant to be used in applications where music is the key element, such as dance cafés, pubs and clubs while other sets are meant to be used in commercial as well as residential applications.

Cielo solutions

The CIELO sets are combinations consisting of ceiling speakers with a matching 100V public address amplifier. They are primarily used in commercial and residential applications.

The set number indicates the amount of square meters which can be covered by clear and intelligible sound with an average height ceiling.

CIELO 200

The CIELO 200 is a combination of ceiling speakers with a public address amplifier and a paging microphone which is suitable to cover a surface of up to 200m² with clear and intelligible music and speech.



COM12

Public Address Amplifier

AUDAC

► Features

- 5 x 100V mono output zones
- 1 Low impedance 4 ohm mono output zone
- 2 Stereo unbalanced line level inputs
- 2 Mono balanced Line / Mic level inputs
- 2 Mono balanced Line / Mic level inputs with priority settings and phantom power
- Bass and Treble tone control
- Up to 6 Microphones
- Possibility to connect a telephone pager

► Applications

- Hotels
- Restaurants
- Shops
- Warehouses
- Offices
- Public buildings



The COM12 public address amplifier is developed as an easy to use, flexible solution for multifunctional use. During the development of the COM12 public address amplifier, the AUDAC-engineers wanted to achieve four goals:

- Delivering a flexible audio solution to control multiple functions
- Easy to use
- Excellent sound quality
- A modern and advanced design

The COM12 has 2 stereo unbalanced Line level inputs which can be switched to Mic level, 2 mono balanced Line / Mic level inputs and 2 mono balanced Line / Mic level inputs with priority settings and phantom power.

The output signal is available on 5 high impedance 100V mono output zones or one low impedance 4 ohm mono output zone. Other features are a link input and output, an amp input and pre-amp output, a remote microphone input and the possibility to connect a telephone pager unit.

The front panel offers all controls needed to operate the COM12. Next to channel volume controls for each channel (1-6), a 2 band tone control and a master volume control are there also a chime and zone selection buttons available. The power LED, a 5 segment output VU bar and a red output clipping LED ensure easy monitoring of the COM12.

At the back, users can connect the appropriate loudspeakers. Five independent 100V zones, or one 4 ohm low impedance zone can be applied. Never connect the two types of loudspeakers at the same time.

This device will prove its worth in commercial applications such as restaurants, business offices, hotels, warehouses, ...

19" adapters included.

► Specifications

SYSTEM SPECIFICATIONS	
Max. Power consumption	120 W
THD+N by 1kHz	< 0.5%
Signal to noise ratio	> 90 dB @ 1 kHz
Power supply	230 V AC / 50-60 Hz
Phantom power	15 V DC
Balanced microphone channels	-50 dB ± 3dB
Balanced line channel	-22 dB ± 3dB
Balanced remote microphone station	-50 dB ± 3dB
Balanced telephone paging	-21 dB ± 3dB
Unbalanced link in	-17 dB ± 3dB
Unbalanced amp in	0 dB ± 3dB
Zone outputs 1 - 5	100 V / 83 Ohm
Protection	DC short circuit Overheat Over load Signal limiting
Power consumption (max)	170 W
PRODUCT FEATURES	
Dimensions (Width x Height x Depth)	420 x 88 x 320 mm
Weight net	9.70 Kg
Unit height	2 HE
SHIPPING & ORDERING	
Packaging	Carton box
Shipping weight and volume	11.00 Kg - 0.011 Cbm
*AUDAC reserves the right to change specifications without notice: this is part of our policy to continually improve our products	

CS55

Ceiling Speaker

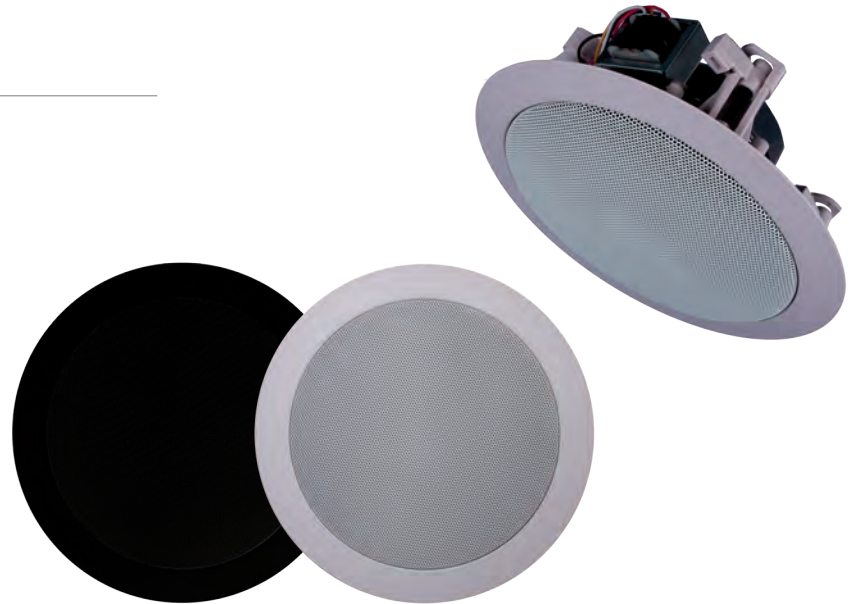
AUDAC

► Features

- Installation ceiling loudspeaker
- Very attractive design
- Detachable aluminium grill
- 3 different power tapings
- Very good speech reproduction
- Quick and simple mounting

► Applications

- Public buildings
- Business offices
- Warehouses
- Shops
- Hotels
- Restaurants



The CS series loudspeakers are AUDAC's ceiling speakers, designed for use any possible application.

Wherever sound is needed without obvious speakers, or in larger buildings where the sound has to be spread over an enormous space, the CS Series speakers will offer the best solution.

The use of high quality components, combined with the application of a standard 100V line transformer, makes the CS series a range of speakers that can be used in any situation. Even if it's a standard low impedance Hi-Fi installation or a larger 100V PA system.

The CS55 contains a single cone loudspeaker with a diameter of 125 mm, that will ensure a good speech reproduction.

The power can be set in 3 adjustable steps of impedance for 100V and 1 step for 8 Ohm standard low impedance applications.

- 6 Watt / 1600 Ohm @ 100V
- 3 Watt / 3300 Ohm @ 100V
- 1.5 Watt / 6600 Ohm @ 100V
- 10 Watt @ 8 Ohm

Below the detachable grill, there are four screws for a quick and simple attachment of the unit.

The removable grill and housing of the speaker can be painted, to blend in with the structure the speaker is built in. With these speakers comes an easy cut-out template to accomplish easy installation.

► Specifications

SYSTEM SPECIFICATIONS	
Max. power	20 W
RMS power	10 W
Power line transformer 1	6 W / 1600 Ohm
Power line transformer 2	3 W / 3300 Ohm
Power line transformer 3	1.5 W / 6600 Ohm
Frequency response -3dB	70 Hz - 14 kHz
Sound pressure W/1m	93 dB
Sound pressure max W / 1m	100.8 dB
Impedance	8 Ohm
PRODUCT FEATURES	
Dimensions (Width x Height x Depth)	Ø 205 x 70 mm
Weight net	780 g
Drivers	4 1/4"
Construction	ABS housing
Mounting	4 Screws clamps
Cut-out measurement	Ø 167 mm
Built-in depth	70 mm
Front finish	White aluminium grill
Colour	White (RAL 9010)
SHIPPING & ORDERING	
Packaging	Carton box
Shipping weight & volume	880 g - 0.0038 Cbm
Accessories	Foam inlay White Cut-out template

*AUDAC reserves the right to change specifications without notice: this is part of our policy to continually improve our products



PDM200

Dynamic Paging Microphone

► Features

- Dynamic cardioid gooseneck microphone
- Slim design
- Die-cast metal base
- 3 position switch
- Switch contact and RC network for operation with chime modules

► Applications

- Conference rooms
- Warehouses
- Professional offices
- Shops

The PDM200 paging microphone is a polyvalent dynamic gooseneck microphone, mounted on a solid, very stable base and fitted with a three function switch with functions: Permanently ON / Momentary ON / OFF.

It is equipped with a switch contact and integrated RC network for use with chime modules. By means of the integrated switch contact and RC network, the PDM200 can activate the chime module of AUDAC COM12/24 or many other public address amplifiers.

Its suitable for announcements in all different kinds of environments, ranging from small retail stores and offices to warehouses, large public buildings or big office buildings.

A connection cable with a length of 1.5 meter, fitted with a 3-pin XLR connector and connection wires for the chime contacts is attached.



► Specifications

SYSTEM SPECIFICATIONS	
Frequency response	80 Hz - 12 kHz
Sensitivity	-70 dB
Impedance microphone	600 Ohm
PRODUCT FEATURES	
Dimensions	110 x 365 x 160 mm
Weight net	846 g
Connector	3-pin XLR + 3 x Chime conductors
Connection cable length	1.5 m
Polar Pattern	Cardioid
Microphone type	Dynamic
Colour	Black
SHIPPING & ORDERING	
Packaging	Carton box
Shipping weight & Volume	2.5 Kg - 0.0065 Cbm

*AUDAC reserves the right to change specifications without notice: this is part of our policy to continually improve our products