



# CMPRO-4H4H

4 by 4 HDMI Matrix



Operation Manual



## **DISCLAIMERS**

The information in this manual has been carefully checked and is believed to be accurate. Cypress Technology assumes no responsibility for any infringements of patents or other rights of third parties which may result from its use.

Cypress Technology assumes no responsibility for any inaccuracies that may be contained in this document. Cypress also makes no commitment to update or to keep current the information contained in this document.

Cypress Technology reserves the right to make improvements to this document and/or product at any time and without notice.

## **COPYRIGHT NOTICE**

No part of this document may be reproduced, transmitted, transcribed, stored in a retrieval system, or any of its part translated into any language or computer file, in any form or by any means—electronic, mechanical, magnetic, optical, chemical, manual, or otherwise—without express written permission and consent from Cypress Technology.

© Copyright 2012 by Cypress Technology.

All Rights Reserved.

Version VR1.0 September 2012

## **TRADEMARK ACKNOWLEDGMENTS**

All products or service names mentioned in this document may be trademarks of the companies with which they are associated.



## SAFETY PRECAUTIONS

Please read all instructions before attempting to unpack, install or operate this equipment and before connecting the power supply.

Please keep the following in mind as you unpack and install this equipment:

- Always follow basic safety precautions to reduce the risk of fire, electrical shock and injury to persons.
- To prevent fire or shock hazard, do not expose the unit to rain, moisture or install this product near water.
- Never spill liquid of any kind on or into this product.
- Never push an object of any kind into this product through any openings or empty slots in the unit, as you may damage parts inside the unit.
- Do not attach the power supply cabling to building surfaces.
- Use only the supplied power supply unit (PSU). Do not use the PSU if it is damaged.
- Do not allow anything to rest on the power cabling or allow any weight to be placed upon it or any person walk on it.
- To protect the unit from overheating, do not block any vents or openings in the unit housing that provide ventilation and allow for sufficient space for air to circulate around the unit.

## REVISION HISTORY

VERSION NO.	DATE DD/MM/YY	SUMMARY OF CHANGE
VR0	10/02/14	Preliminary Release



## CONTENTS

<b>1. Introduction</b> .....	<b>1</b>
<b>2. Applications</b> .....	<b>1</b>
<b>3. Package Contents</b> .....	<b>1</b>
<b>4. System Requirements</b> .....	<b>1</b>
<b>5. Features</b> .....	<b>1</b>
<b>6. Operation Controls and Functions</b> .....	<b>2</b>
6.1 Front Panel .....	2
6.2 Rear Panel.....	3
6.3 Remote Control.....	4
6.4 D-Sub 9-Pin Definitions .....	5
6.5 IR Cable Pin Assignment.....	5
6.6 RS-232 Protocols .....	6
6.7 Web GUI Control .....	7
<b>7. Connection Diagram</b> .....	<b>9</b>
<b>8. Specifications</b> .....	<b>10</b>
<b>9. Acronyms</b> .....	<b>12</b>

## 1. INTRODUCTION

The 4 by 4 HDMI matrix with 4Kx2K supported which allows HDMI signal from any of its four sources to be routed to and displayed on any of its four connected HDMI displays simultaneously. It supports 3D, Deep Color, Hi-Def lossless audio and other features defined by HDMI specifications. The management of source/ sink scenarios can be operated easily through on-panel buttons, IR remote control, RS-232 or Web GUI controls.

## 2. APPLICATIONS

- Showroom display control
- Educational demo
- Installation usage
- Advertising display

## 3. PACKAGE CONTENTS

- 4x4 HDMI Matrix
- Remote Control (CR-33)
- 1 x IR Extender
- Power Adaptor
- Operational Manual

## 4. SYSTEM REQUIREMENTS

Input source equipment such as Blu-ray/DVD players with 3D/4Kx2K contents, output display HD TV/monitor with 3D/4Kx2K functions and HDMI high standard cables.

## 5. FEATURES

- Support HDTV resolutions up to 4Kx2K@30Hz
- Supports 7.1CH of LPCM, Dolby TrueHD, and DTS-HD Master Audio
- Supports 1080p@60Hz, Deep Color 36/30/24 bits
- Supports Internal/External EDID
- Supports IR, RS-232 and Web GUI controls

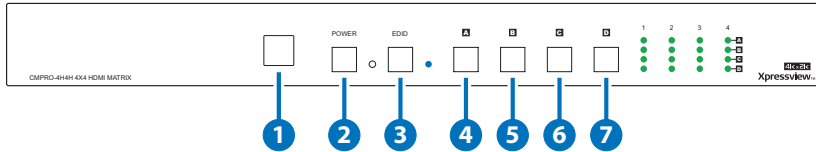
**Note:** This device does not support HDMI to DVI conversion.

*In order to ensure proper 4Kx2K's display both source and display must support 4Kx2K's specification.*



## 6. OPERATION CONTROLS AND FUNCTIONS

### 6.1 Front Panel



#### 1 IR

IR receiver window accepts the remote control signal of this device.

#### 2 POWER & LED

Press this button to power the device ON/OFF. The LED will illuminate when the power is ON.

#### 3 EDID & LED

Press this button to use the internal/STD or external/TV EDID. The LED will illuminate when STD EDID is selected. STD EDID video up to 1080p@24/50/60 and audio up to LPCM 2CH at 192KHz & 24 bits. TV EDID mode will bypass output A's EDID to all inputs, when output A obtain a 4Kx2K EDID the device will send out a 4Kx2K's timing to all outputs, if output A's EDID does not obtain a 4Kx2K's EDID the device will detect all outputs EDID and send a timing that all outputs can accept.

#### 4 OUTPUT A

Press this button to select input source for output A, the LED will illuminate accordingly to the selection.

#### 5 OUTPUT B

Press this button to select input source for output B, the LED will illuminate accordingly to the selection.

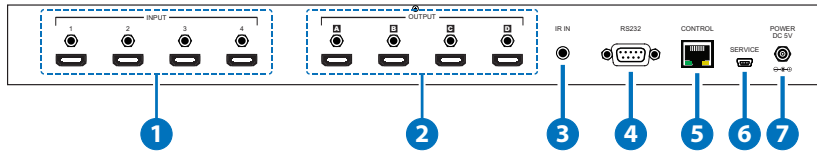
#### 6 OUTPUT C

Press this button to select input source for output C, the LED will illuminate accordingly to the selection.

#### 7 OUTPUT D

Press this button to select input source for output D, the LED will illuminate accordingly to the selection.

## 6.2 Rear Panel



### 1 INPUT 1~4

Connect input source equipments such as DVD/Blu-ray players with HDMI cables.

### 2 OUTPUT A~D

Connect to HDMI 3D TV/display or monitor for both audio and video or moving/static graphic play.

### 3 IR IN

Connect the supplied IR Extender (included in the package) for IR signal reception from the remote control included in the package. Ensure that remote being used is within the direct line-of-sight of the IR Extender.

### 4 RS-232

Connect to a PC or laptop with D-Sub 9-pin male cable for the transmission of RS-232 commands.

### 5 CONTROL

Connect to an internet or network activate device. The green LED will illuminate up on connecting to the network and the yellow LED will blink during data transmission.

### 6 SERVICE

Reserved for factory using only.

### 7 POWER DC 5V

Connect the 5V DC power supply included in the package to an AC wall outlet.

## 6.3 Remote Control

### 1 POWER

Press this button to switch ON or set to standby mode of the device.

### 2 OUTPUT A 1~4

Press buttons 1~4 to select the nominated input for output A.

### 3 OUTPUT B 1~4

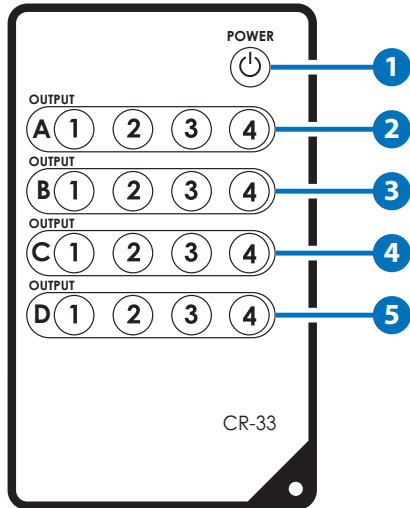
Press buttons 1~4 to selection the nominated input for output B.

### 4 OUTPUT C 1~4

Press buttons 1~4 to select the nominated input for output C.

### 5 OUTPUT D 1~4

Press buttons 1~4 to select the nominated input for output D.





## 6.4 D-Sub 9-Pin Definitions

CMPRO-4H4H			Remote Control	
PIN	Assignment		PIN	Assignment
1	NC		1	NC
2	TX		2	RX
3	RX	→	3	TX
4	NC		4	NC
5	GND	←	5	GND
6	NC		6	NC
7	NC		7	NC
8	NC		8	NC
9	NC		9	NC

Baud Rate: 19200bps

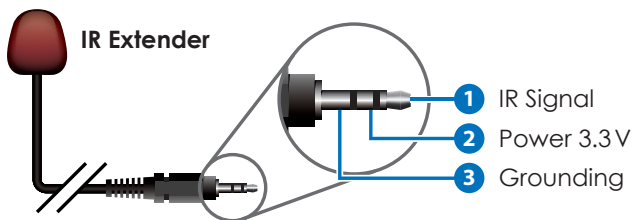
Data Bit: 8 bits

Parity: None

Flow Control: None

Stop Bit: 1

## 6.5 IR Cable Pin Assignment





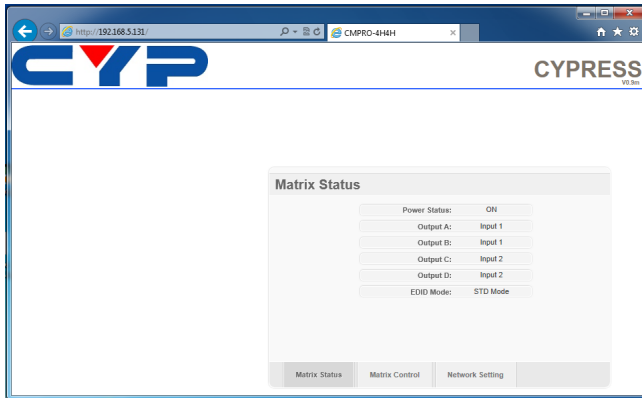
## 6.6 RS-232 Protocols

Command	Description
A1~A4	Switch Output A to 1~4
B1~B4	Switch Output B to 1~4
C1~C4	Switch Output C to 1~4
D1~D4	Switch Output D to 1~4
ABC...1~ABC...4	Switch Output A B C... to 1~4 at the same time
SETIP	Setting IP
SETNETMASK	Setting Net Mask
SETGATEWAY	Setting Gateway
RSTIP	IP configuration was reset to factory default<DHCP>
IPCONFIG	Display the current IP config
P0	Power Off
P1	Power On
I1~I4	Switch all the output to 1~4
ST	Display the current matrix state and F/W version
RS	System Reset to A1, B2, C3, D4
EM1~EM2	Setting EDID MODE. 1-STD 2-TV
?	Display all available commands

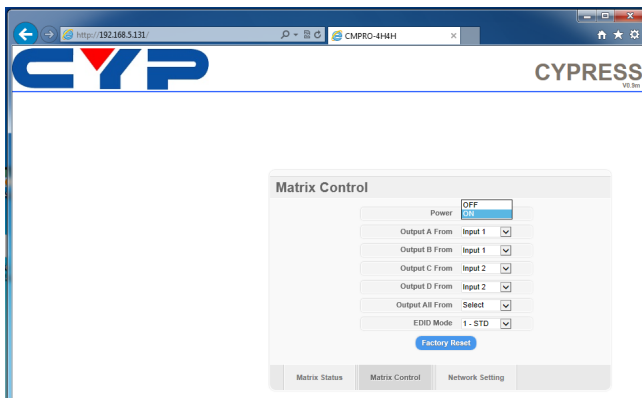
**Note:** All the RS-232 command will be not executed unless followed with a carriage return and all command are case-insensitive.

## 6.7 Web GUI Control

On a PC/Laptop that is connected to the same active network as the Matrix, open a web browser and type device's IP address (get from RS-232's help command or use the default IP: 192.168.0.1) on the web address entry bar. The browser will display the device's status, control and User setting pages.

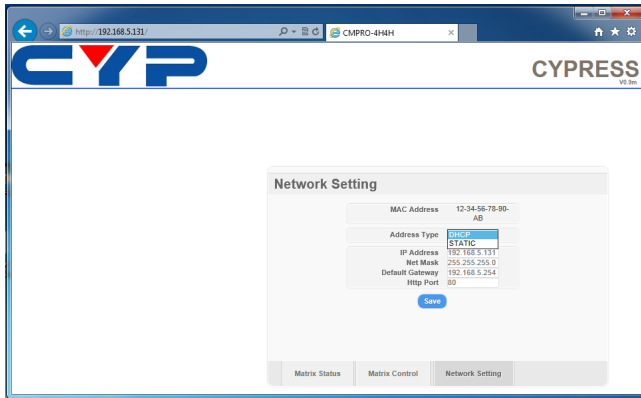


Click on the 'Control' tab to control power, input/output ports, EDID and factory reset.



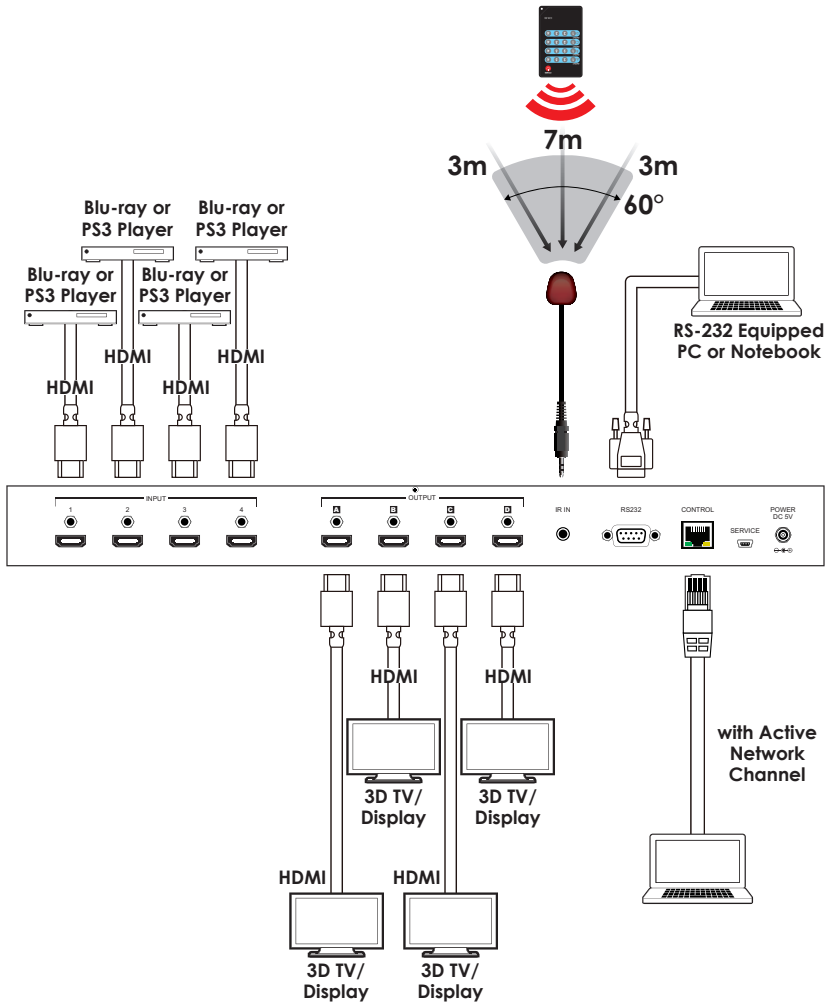


Clicking on the 'Setting' tab allows you to reset the IP configuration. The system will ask for a reboot of the device every time when any of the setting is changed. The IP address needed to access the Web GUI control will also need to be changed accordingly on the web address entry bar.



**Note:** The Internet Web browser's version needs to be IE version 8 and above in order to perform Web GUI function.

## 7. CONNECTION DIAGRAM





## 8. SPECIFICATIONS

<b>Video Bandwidth</b>	340Mbps /10.2Gbps
<b>Input ports</b>	4 x HDMI, 1 x IR, 1 x RS-232, 1 x Control, 1 x Mini USB (for service only)
<b>Output ports</b>	4 x HDMI
<b>Output Resolution</b>	480i ~1080p, VGA~WUXGA & 4Kx2K@24/25/30Hz
<b>HDMI I/O Cable Distance</b>	15m/8-bit, 10m/12-bit, 5m/4Kx2K
<b>Power Supply</b>	5V/3.6A DC (US/EU standards, CE/FCC/UL certified)
<b>ESD Protection</b>	Human body model: ±8kV (air-gap discharge) ±4KV (contact discharge)
<b>Dimensions</b>	436mm(W) x 160mm(D) x 44mm(H)/Jacks Excluded 436mm(W) x 167mm(D) x 48mm(H) /Jacks Included
<b>Weight</b>	1945g
<b>Chassis Material</b>	Metal
<b>Silkscreen Color</b>	Black
<b>Operating Temperature</b>	0°C ~ 40°C / 32 °F ~ 104 °F
<b>Storage Temperature</b>	-20°C ~ 60°C / -4 °F ~ 140 °F
<b>Relative Humidity</b>	20 ~ 90% RH (non-condensing)
<b>Power Consumption</b>	10.8w

**Note:** When displaying a 3D signal with a higher bandwidth than 225 MHz or a 4K×2K resolution source, a High Speed HDMI cable is required.

HDMI Supported Resolutions	Input	Output
640x480@60	✓	✓
640x480@72	✓	✓
640x480@75	✓	✓
720x480@60	✓	✓
720x576p@50	✓	✓
800x600@60	✓	✓
800x600@72	✓	✓
800x600@75	✓	✓
1024x768@60	✓	✓
1024x768@70	✓	✓
1024x768@75	✓	✓
1280x720@50	✓	✓
1280x720@60	✓	✓
1280x720p@60	✓	✓
1280x768@60	✓	✓
1280x800@60	✓	✓
1280x1024@60	✓	✓
1360x768@60	✓	✓
1600x1200@60	✓	✓
1920x1080i@50	✓	✓
1920x1080i@60	✓	✓
1920x1080p@24	✓	✓
1920x1080p@25	✓	✓
1920x1080p@30	✓	✓
1920x1080p@50	✓	✓
1920x1080p@60	✓	✓
1920x1200@60(RB)	✓	✓
3840x2160@24/25/30	✓	✓
4096x2160@24	✓	✓

## 9. ACRONYMS

ACRONYM	COMPLETE TERM
HDCP	High-bandwidth Digital Content Protection
HDMI	High-Definition Multimedia Interface



**CYPRESS TECHNOLOGY CO., LTD**  
Home page: <http://www.cypress.com.tw>

20120926 MPM-CMPRO4H4H