

# Atlas Solutions

Enhancing The Intelligibility Of The Spoken Word

## ControlKom™ 2.0

IP Based Paging, Intercom  
and Emergency Messaging  
Over Your Existing Network  
and Phone System



1601 Jack McKay Blvd., Ennis, TX 75119 U.S.A. 800.876.3333

ISO9001  
-CERTIFIED-



ATLASSOUND.COM

# ControlKom<sup>™</sup> 2.0 Software by Atlas Sound

**ControlKom seamlessly interfaces with any VOIP or legacy telephone system** directly via SIP or a simple analog telephone interface. This provides a familiar, secure and password protected interface for initiating pre-recorded alerts or making a live page. The system is **infinitely scalable** - an unlimited number of schools within a district can be controlled over the network via a single server. The system easily interfaces with any VoIP system via

SIP or analog telephone systems to provide password protected user access for making announcements or other system adjustments. **Live or pre-recorded messages** may be broadcast to an entire district, campus, building, zone, classroom, or individual IP speaker. In emergency situations such as school lock down or weather events, specific **pre-recorded instructions** are easily **triggered from a web browser, contact closure or Ethernet script.**

## Features and Benefits

### • Easy Integration

ControlKom seamlessly interfaces with any **VoIP via SIP, or analog PBX via analog telephone adaptor** (ATA) providing a familiar and secure interface for paging and intercom functionality.

### • Scalable

Multiple sites with IP endpoint deployments may be **controlled across the WAN** via ControlKom.

### • Forward and Backward Compatible

Include legacy intercom systems from Rauland®, Dukane®, Telecore® and others with DTMF zone selection along with new sites that contain IP speaker or Zone Controller endpoints.

### • The Core of Your Emergency Messaging System

Send **live or prerecorded audio** and/or text messages to IP Clock Speakers, Desktops, Email, Facebook and Twitter recipients. **Trigger these messages remotely** from any browser, 3rd party control systems or even simple contact closures.

### • Supervision and Event Logging

Notification group activity, schedule activity, text message activity and web interface log in activity are all logged and can be easily viewed within the GUI.

### • Centralized Control For Bell and Message Schedules

Make changes to bell & message schedules remotely while providing full customization for bell tones at each site. **Choose from a pre-loaded library of tones or create your own.** Additionally, IP clock speaker endpoints are synchronized with the system to ensure accurate time and maintenance free daylight savings time adjustments.

### • No Multicast Requirement for Small Deployments

Utilizing the Atlas Sound paging relay **messages may be streamed via unicast** to individual sites and rebroadcast across the LAN to IP endpoints.

### • Exceptional System Redundancy

“Hot Standby” allows full system back-up and **immediate fail over redundancy** in the unlikely event of a primary server failure.

### • Weather Alerts

Integrate emergency alert groups with the National Weather Service and deliver localized weather alerts (Warnings, Watches and/or Advisories). **System also can sync with CodeAmber.org to deliver Amber Alerts.**

### • Troubleshooting

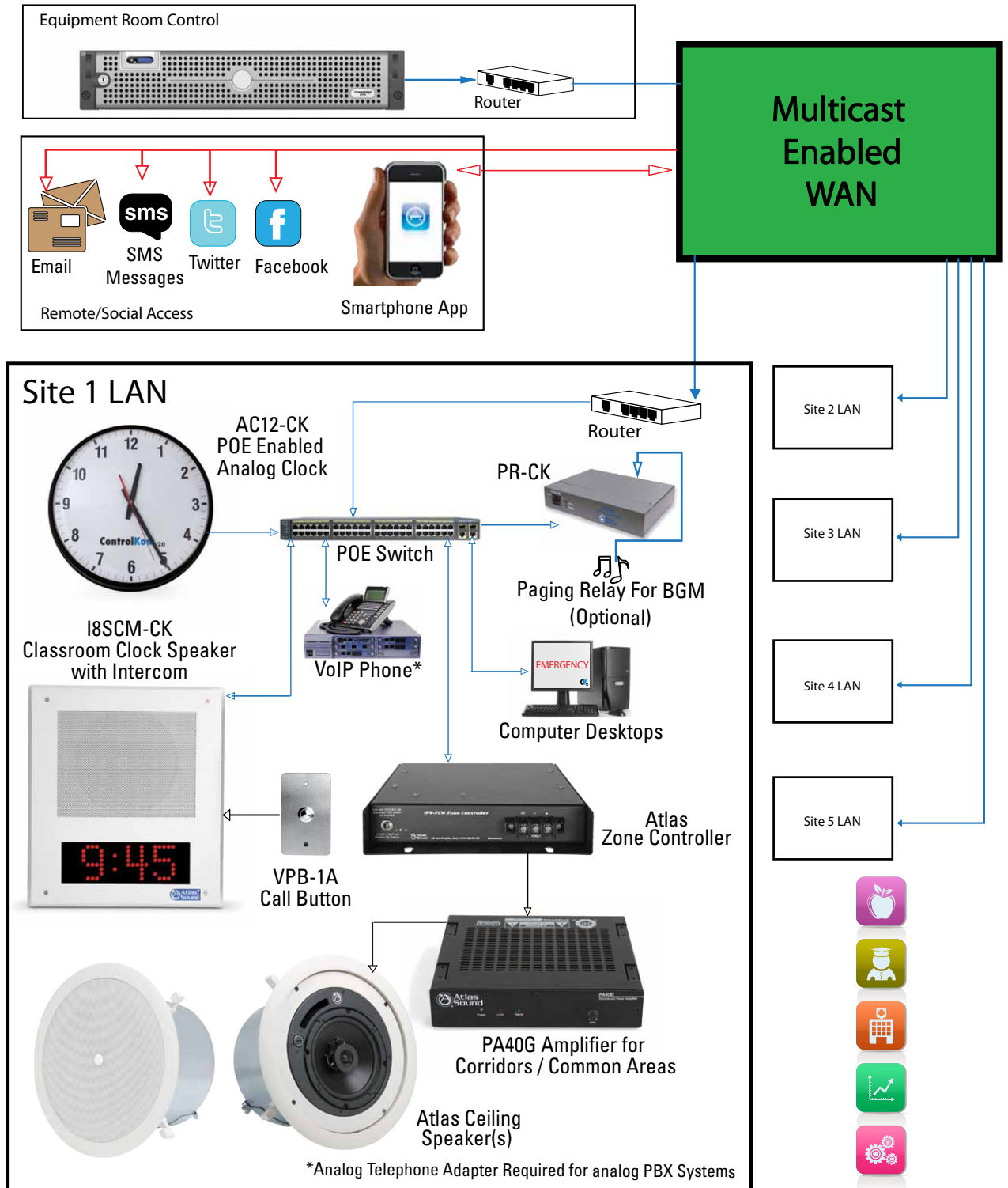
Create a trouble report for your site directly from the GUI, which is then transmitted to Atlas Sound containing all your system configuration settings to expedite diagnosis.



# Atlas Sound

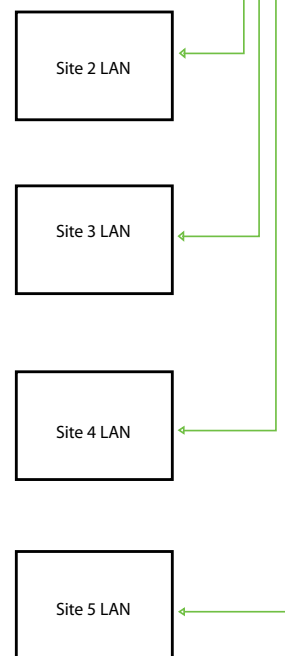
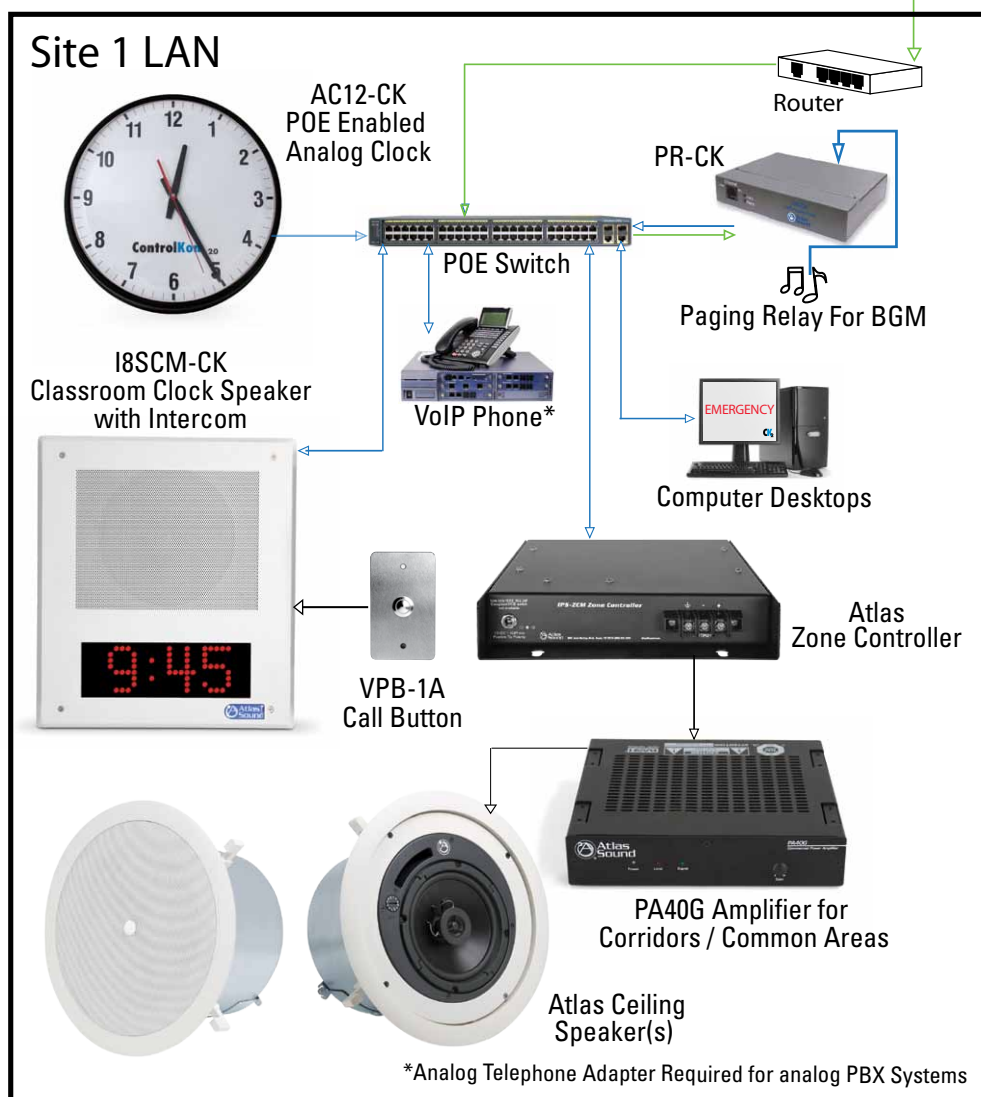
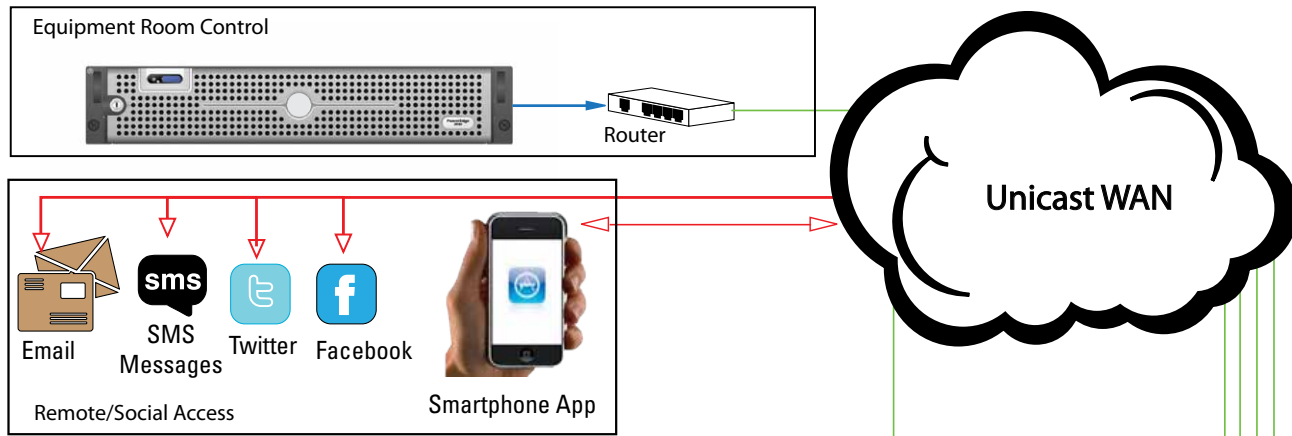
## Multiple Site Deployment

Multicast Enabled Wide Area Network



# Multiple Site Deployment

Unicast Enabled Wide Area Network

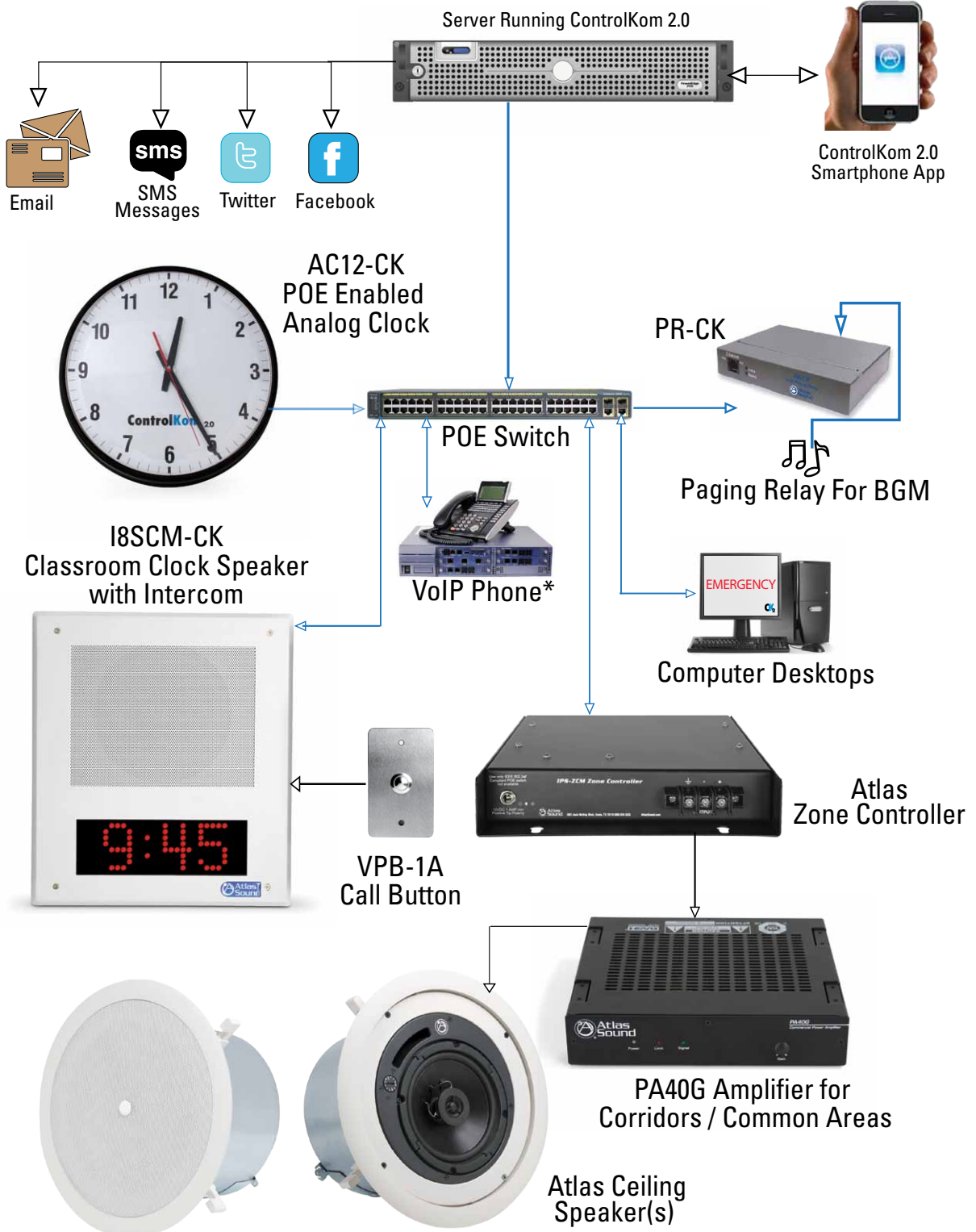


# ControlKom™ 2.0



# Atlas Sound

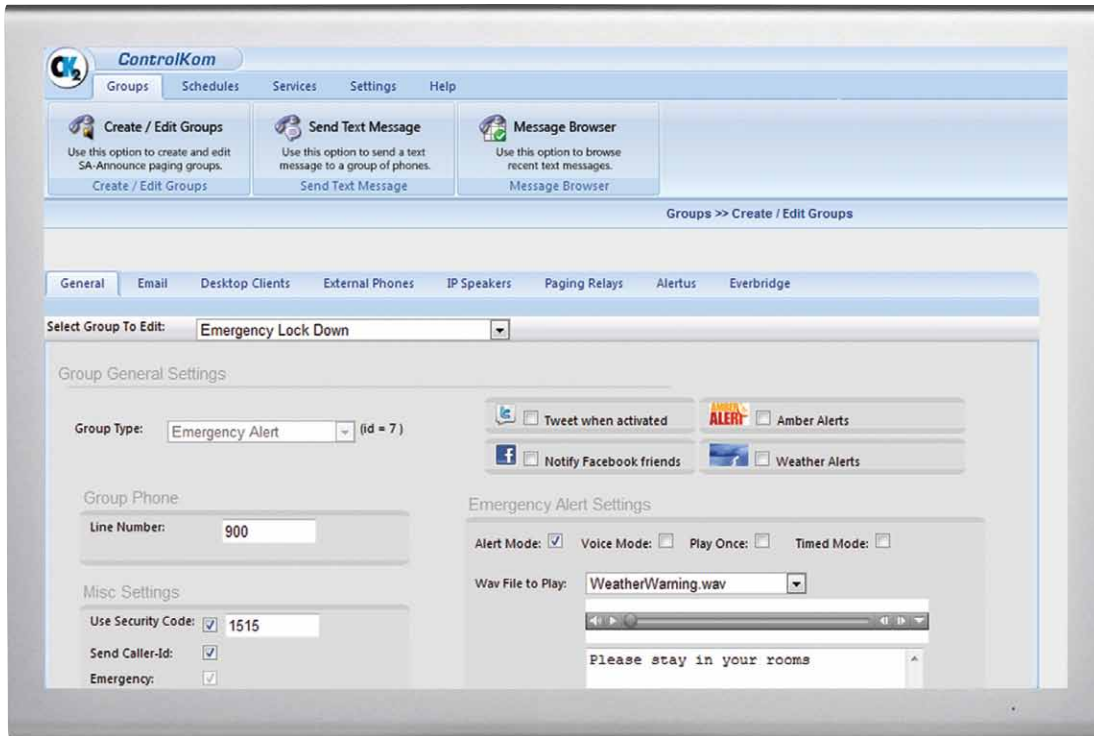
## Single Site Deployment



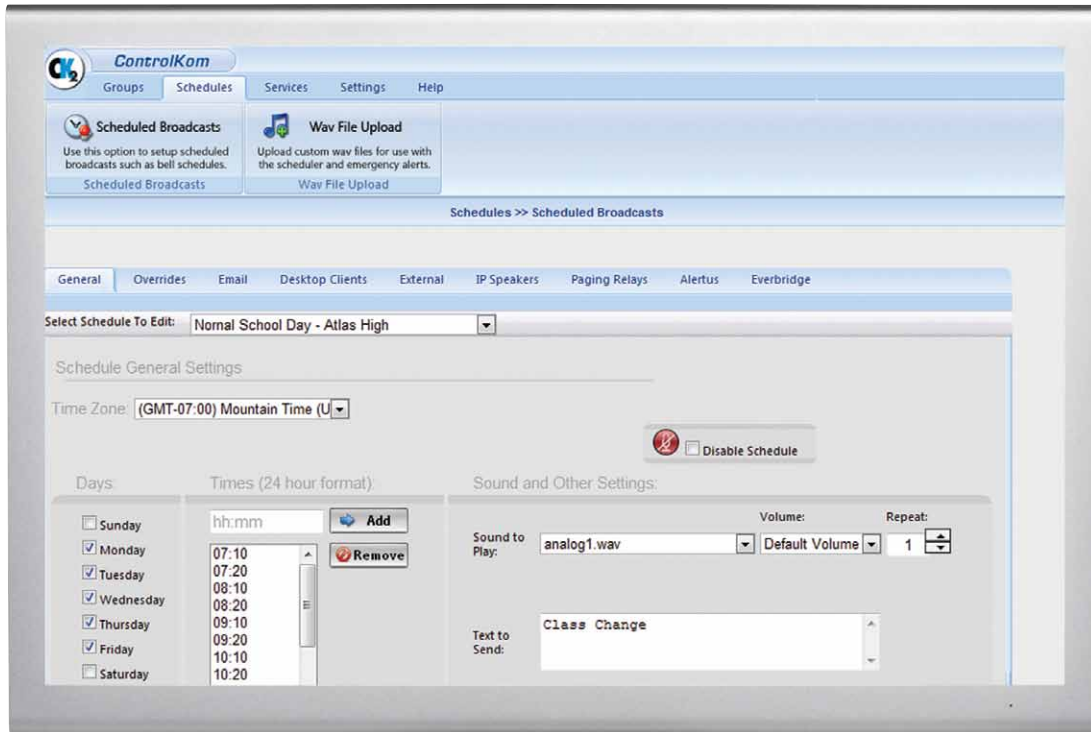
\*Analog Telephone Adapter Required for analog PBX Systems

# Software

ControlKom user friendly GUI allows changes to be made quickly and easily.



**Emergency Group Message Creation Screen - Send Emergency Audio and/or Text Message to Selected Group**



**Scheduled Broadcast Screen - Create and Adjust Schedule for All Broadcasts Including Bells and Other Recurring Notifications**



# Atlas Sound

## Atlas Sound IP Speakers

The industry's **first true IP based paging solution to use standard TCP/IP network protocols** and DHCP for speaker IP address assignment. Speakers are powered via PoE to deliver 9 watts of audio output to either a cone transducer or re-entrant horn. Models are available with **optional high-resolution LED clock displays and/or built in microphones** to provide duplex communication directly to telephones.

### Why IP Speakers?

IP Speakers provide a better solution than "phone only" paging by increasing intelligibility in high noise areas and using targeted dispersion to aim sound where it truly needs to be heard. **In complex zone paging scenarios IP speakers are often more economical than traditional paging speakers.**

Devices are easily configured in ControlKom™ software. Network input is made with a standard RJ45 connection.



All Atlas IP Speakers are UL60950-1 listed.

*18SC-CK / 18SCM-CK*



### • IP Series Speakers

**18S-CK** Basic IP Speaker with 8" driver for wall mount use in classrooms, hallways & corridors (interior only).

**18SM-CK** Same as 18S-CK with built-in microphone.

**18SC-CK** IP Speaker with bright, **5 character LED display for clock display and scrolling text support.**

**18SCH-CK** Same as the 18SC-CK with APF Series Compression Driver.

**18SCM-CK** Same as 18SC-CK with built-in microphone.

### • In Ceiling IP Speakers

**IDT12-CK** 1' x 2' "Drop In" tile replacement speaker system.

**IDT12M-CK** Same as IDT12-CK with built in microphone.

### • Vandal Resistant IP Speakers

**IHVP-CK** Weather resistant cast aluminum / stainless construction.

### • Enclosures for IP Speakers

IP speaker enclosure options are available in surface mount straight (SEST), surface mount angled (SEA) and flush (FEST) versions.

Model	Speaker Size / Type	Sensitivity	Frequency Response	LED Display	Built in MIC	Height	Width	Depth
18S-CK	8" (C10A)	94 dB	86Hz – 9kHz	N	N	11½"	11½"	4¼"
18SM-CK	8" (C10A)	94 dB	86Hz – 9kHz	N	Y	11½"	11½"	4¼"
18SC-CK	8" (C10A)	94 dB	86Hz – 9kHz	Y	N	14⅜"	12⅞"	2.99"
18SCH-CK	7" (APF-15)	104 dB	600Hz – 14kH	Y	N	14⅜"	12⅞"	2.99"
18SCM-CK	8" (C10A)	94 dB	86Hz – 9kHz	Y	Y	11½"	11½"	4¼"
IDT12-CK	8" (C10A)	94 dB	86Hz – 9kHz	N	N	11½"	11½"	4¼"
IDT12M-CK	8" (C10A)	94 dB	86Hz – 9kHz	N	Y	11½"	11½"	4¼"
IHVP-CK	7" (APF-15)	104 dB	600Hz – 14kHz	N	N	11½"	11½"	4¼"

# Zone Controllers

Atlas Zone Controllers provide a cost effective way to address distributed loudspeaker zones either on their own or as part of an IP speaker deployment. Units also allow **simple integration of legacy systems** with ControlKom software to provide bell tones, paging and emergency messaging.

## Zone Controller PRO

Designed to provide extreme flexibility for any deployment, the ZC1PRO includes a compliment of configuration options.

- **Internal 9W amplifier** (8Ω, 25V and 70V output)
- Balanced, line level output
- Microphone input allows use of plate mounted wall/ceiling mic model ZCPRO-MIC
- Contact closure interface for classroom call buttons
- PoE or local PSU
- Removable Phoenix connectors for all rear panel I/O
- RJ45 network connection on front panel

Available models:

**ZC1PRO-CK**(x1 Zone Controller Pro module with 2RU mounting faceplate and single unit mounting hardware)**ZC2PRO-CK** (Dual rack mount version)



## Standard Zone Controllers

Line level output zone controller.

- 600Ω balanced line level output on terminal block connector
- **PoE or local PSU**
- RJ45 network connection on front panel

Available models:

**ZC1-CK** (x1 Zone Controller Pro module with 1RU mounting faceplate and single unit mounting hardware) **ZC2-CK** (Dual rack mount version)

**ZC1PRO-CK**  
(Shown without rack mount kit - Included)



Model	Description	Power Rating	Inputs	Outputs	Power Source	Network Control
ZC1PRO-CK	Zone Controller Pro Module with 2RU Mounting Faceplate	9W RMS @ 8Ω/25V/70.7V	RJ45	600Ω, 8Ω, 25V, 70.7V	IEEE 802.3af Compliant POE Network Switches / Local 12VDC – 18VDC PSU	Multicast Enabled Networks
ZC2PRO-CK	(2) Zone Controller Pro Modules with 2RU Mounting Faceplate	9W RMS @ 8Ω/25V/70.7V	RJ45	600Ω, 8Ω, 25V, 70.7V	IEEE 802.3af Compliant POE Network Switches / Local 12VDC – 18VDC PSU	Multicast Enabled Networks

Model	Description	Analog Output	Inputs	Output	Power Source	Network Control
ZC1-CK	Zone Controller Module with 1RU Mounting Faceplate	Transformer Balanced	RJ45	600Ω	IEEE 802.3af Compliant POE Network Switches / Local 12VDC – 18VDC PSU	Multicast Enabled Networks
ZC2-CK	(2) Zone Controller Modules with 1RU Mounting Faceplate	Transformer Balanced	RJ45	600Ω	IEEE 802.3af Compliant POE Network Switches / Local 12VDC – 18VDC PSU	Multicast Enabled Networks



1601 Jack McKay Blvd., Ennis, TX 75119 U.S.A. 800.876.3333

© 2011 Atlas Sound LP. All Rights Reserved. Atlas Sound and Strategy Series® are registered trademarks of Atlas Sound LP. All other trademarks are the property of their respective owners.

ISO9001  
-CERTIFIED-



ATLASSOUND.COM

484135

ATS004060 RevD 04/12