

Construction

Fixture-housing is made of formed, cold-rolled sheet steel.

Fixture Body Finish

Low-gloss, Easy-White finish (Tiger Drylac 449/11707 smooth flat) is standard.

Fixture and Reflector

Reflectors are of formed aluminum high diffuse sheet metal construction, featuring 98% reflectance White Optic material. Direct task lights provide general room illumination; as option, fixtures can be configured with video lights only.

Ballast

Ballasts are available in switched or in a variety of dimmable configurations. All ballasts are high-frequency electronic, with a Power Factor > .97, THD, 10% and a Class A sound rating. Ballasts are in the fixture housing. Power and control inputs are from the side or top.

Lamps

This Brightline fixture uses 55-watt compact fluorescent lamps, F24T5 (2-ft), F28T5 (4-ft), or F54T5/HO (4-ft) linear lamps, available in a variety of color temperatures and CRI ratings. Studioline and Cinema Series 55-watt Biax and T-5 High Output linear lamps in 3200K are optimized specifically for video camera applications. (see Lamp Options Datasheet for details.)

Accessories

Louvers available in white, painted-aluminum, or custom finish. (See Louver Options Datasheet for details.)

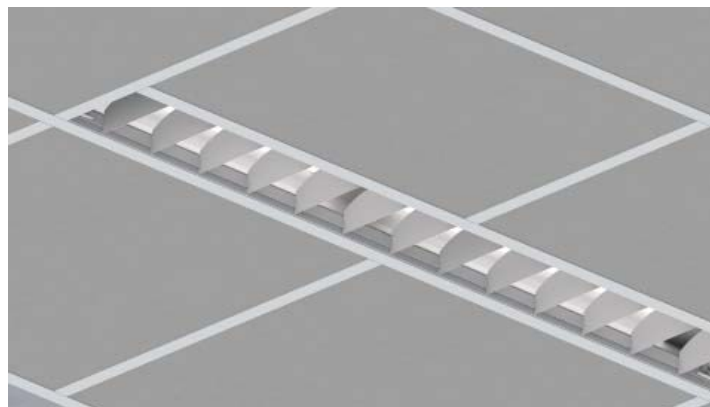
Fixture Dimensions, Aperture and Weight

4-foot Inch: 47.75- x 14.32- x 8.91-in
(1212.85- x 363.78- x 226.31-mm)
Metric: 1195.58- x 363.78- x 226.31-mm
(47.07- x 14.32- x 8.91-in)
Aperture: 5.00- x 47.00-in
(127.00- x 1193.80-mm)
Fixture Weight: 37-lbs (16.78-kg)

2-foot Inch: 23.75- x 14.32- x 8.91-in
(603.25- x 363.78- x 226.31-mm)
Metric: 585.98- x 363.78- x 226.31-mm
(23.07- x 14.32- x 8.91-in)
Aperture: 5.00- x 23.00-in
(127.00- x 584.20-mm)
Fixture Weight: 27-lbs (12.25-kg)

Electrical Certifications

UL, cUL, and CCEA* approved.



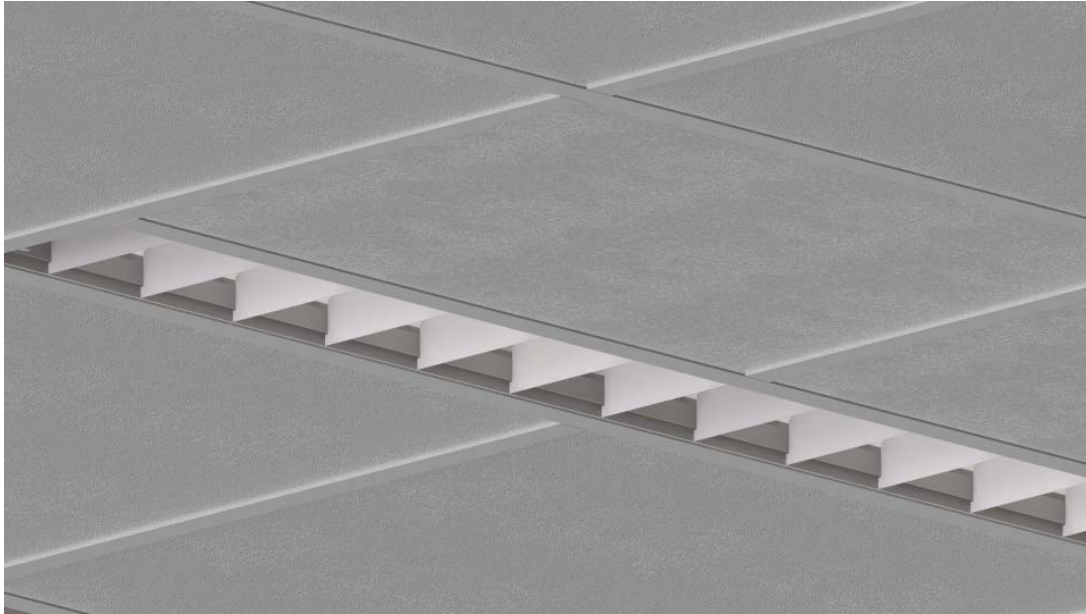
Double VideoPlus can be outfitted to fit a range of aesthetics. The standard louver design complements most architectural styles without interfering with light output.

*Note: CCEA certification provided by request; additional charges may apply.

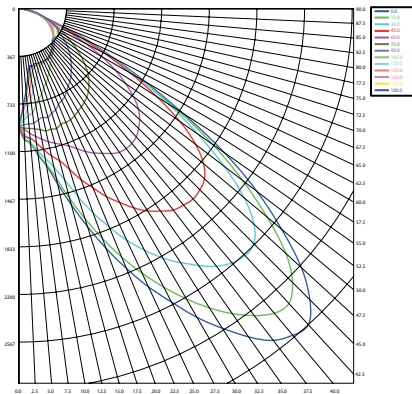
US and Foreign Patents Pending.

580 Mayer Street - Building # 7 - Bridgeville, PA 15017 USA

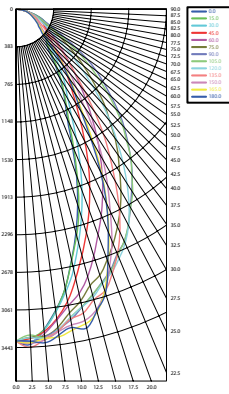
Phone: 1.412.206.0106 - Fax: 1.412.206.0146



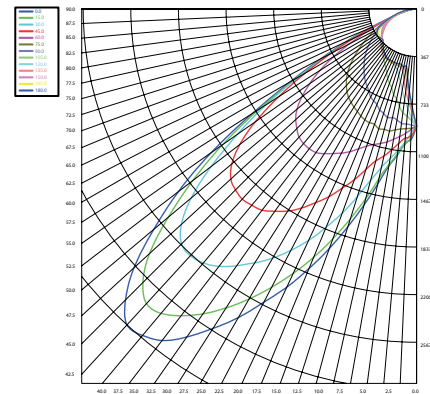
Videoconference Light with Lens
45° vertical light distribution



Task Light
90° horizontal light distribution



Videoconference Light with Lens
45° vertical light distribution



VP							
VideoPlus	Length	Ballast Type	Voltage	Video Lamp	Task Lamp	Video Lamp	Certification
	Specify Length in 2-ft increments	A = 0 - 10V	1 = 120V	V1B - 1LT 55w BIAx	T1B - 1LT 55w BIAx	V1B - 1LT 55w BIAx	PR = CCEA
	2-ft BIAx of Linear	E = Ecosystem	2 = 230V	V1H - 1LT F24T5/HO	T1H - 1LT F24T5/HO	V1H - 1LT F24T5/HO	
	4-ft BIAx or Linear	N = Non-Dim	7 = 277V	V1L - 1LT F54T5/HO	T1L - 1LT F54T5/HO	V1L - 1LT F54T5/HO	
		P = Phase		V1F - 1LT F28T5	T1F - 1LT F28T5	V1F - 1LT F28T5	
		X = Digital		V00 - No Lamp	T2L - 2LT F54T5/HO	V00 - No Lamp	
					T2F - 2LT F28T5		
					T00 - No Lamp		

Note: 2-foot fixture can use either BiAx or Linear Lamps only, no combinations.

Note: Phase-Dim ballasts are not available in 230V.

Note: Phase-Dim ballast are not available for F28T5 lamps.

Note: CCEA Fixtures will have bare leads for control and power; all control cable to be provided by contractor.

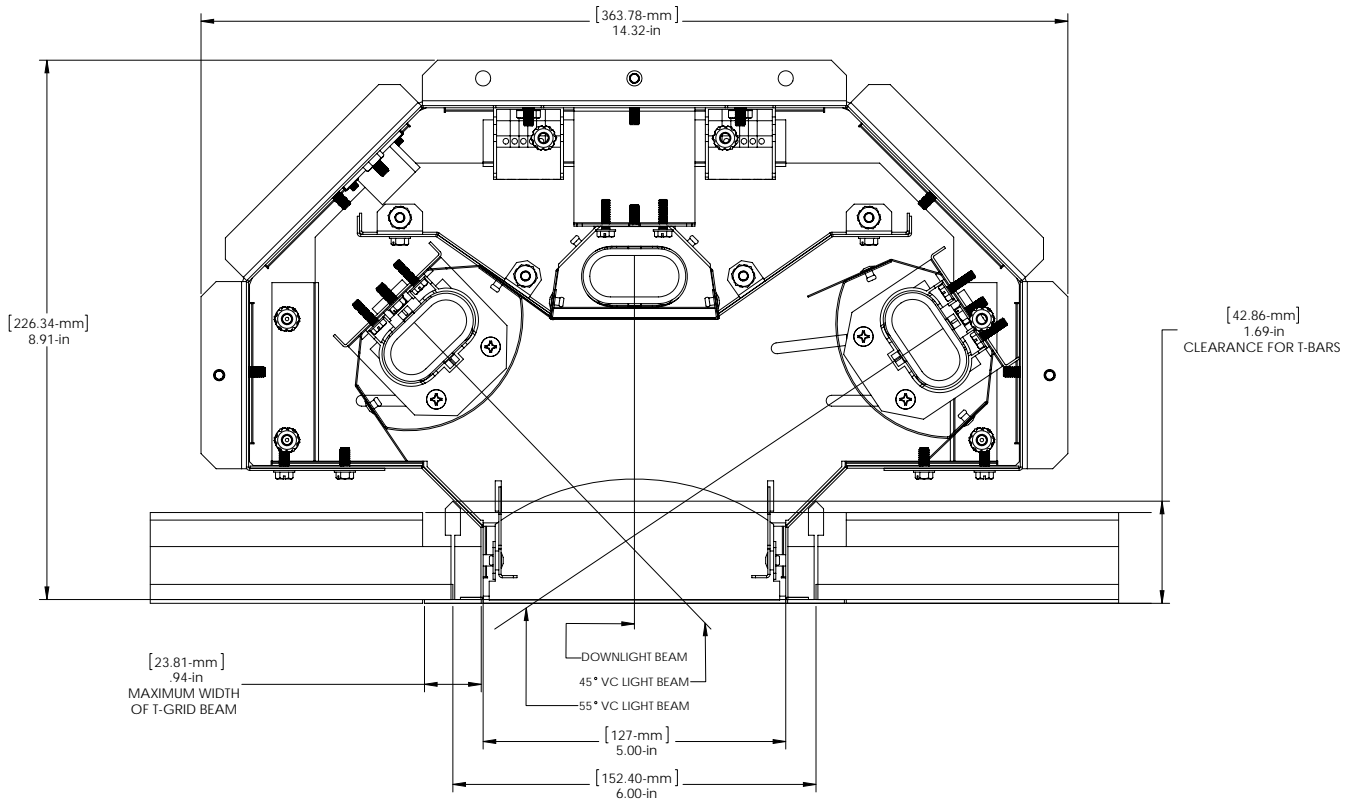
580 Mayer Street - Building # 7 - Bridgeville, PA 15017 USA

Phone: 1.412.206.0106 - Fax: 1.412.206.0146





Section View



Shipping Information	
4-foot fixture	2-foot fixture
Length: 48.50-in (1231.90-mm)	Length: 24.50-in (622.30-mm)
Width: 15.50-in (393.70-mm)	Width: 15.50-in (393.70-mm)
Height: 13-in (330.20-mm)	Height: 13-in (330.20-mm)
Weight: 39-lb (17.69-kg)	Weight: 29-lb (13.15-kg)

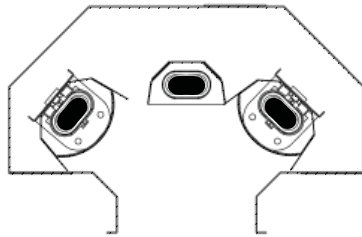
580 Mayer Street - Building # 7 - Bridgeville, PA 15017 USA

Phone: 1.412.206.0106 - Fax: 1.412.206.0146

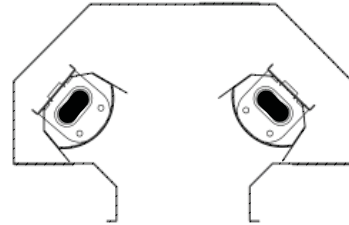




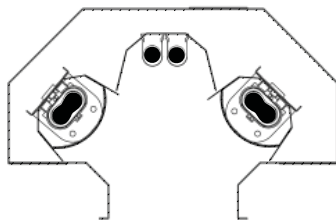
Sample Lamp Configurations



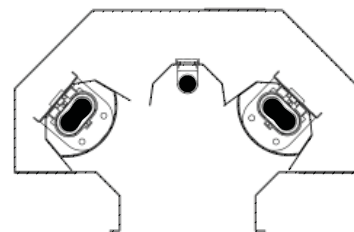
Video Biax Lamps,
Task Biax Lamp



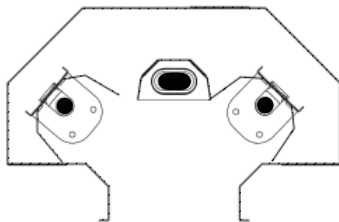
Video Biax Lamps,
No Task Lamp



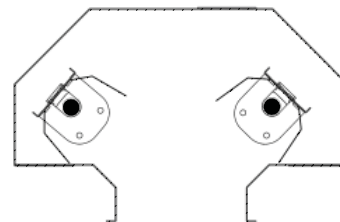
Video Biax Lamps, Task
Dual Linear Lamps*



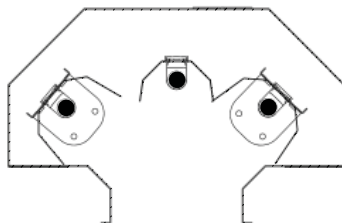
Video Biax Lamps,
Task Linear Lamp



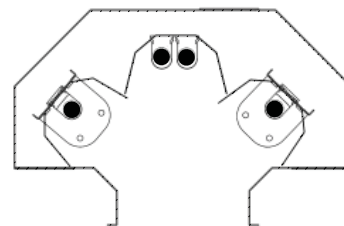
Video Linear Lamps,
Task Biax Lamp



Video Linear Lamps,
No Task Lamp



Video Linear Lamps,
Task Linear Lamp



Video Linear Lamp,
Task Dual Linear Lamps*

* Dual Linear Lamps are only available in 4-Foot VideoPlus Fixtures.

580 Mayer Street - Building # 7 - Bridgeville, PA 15017 USA

Phone: 1.412.206.0106 - Fax: 1.412.206.0146



brightline[®]

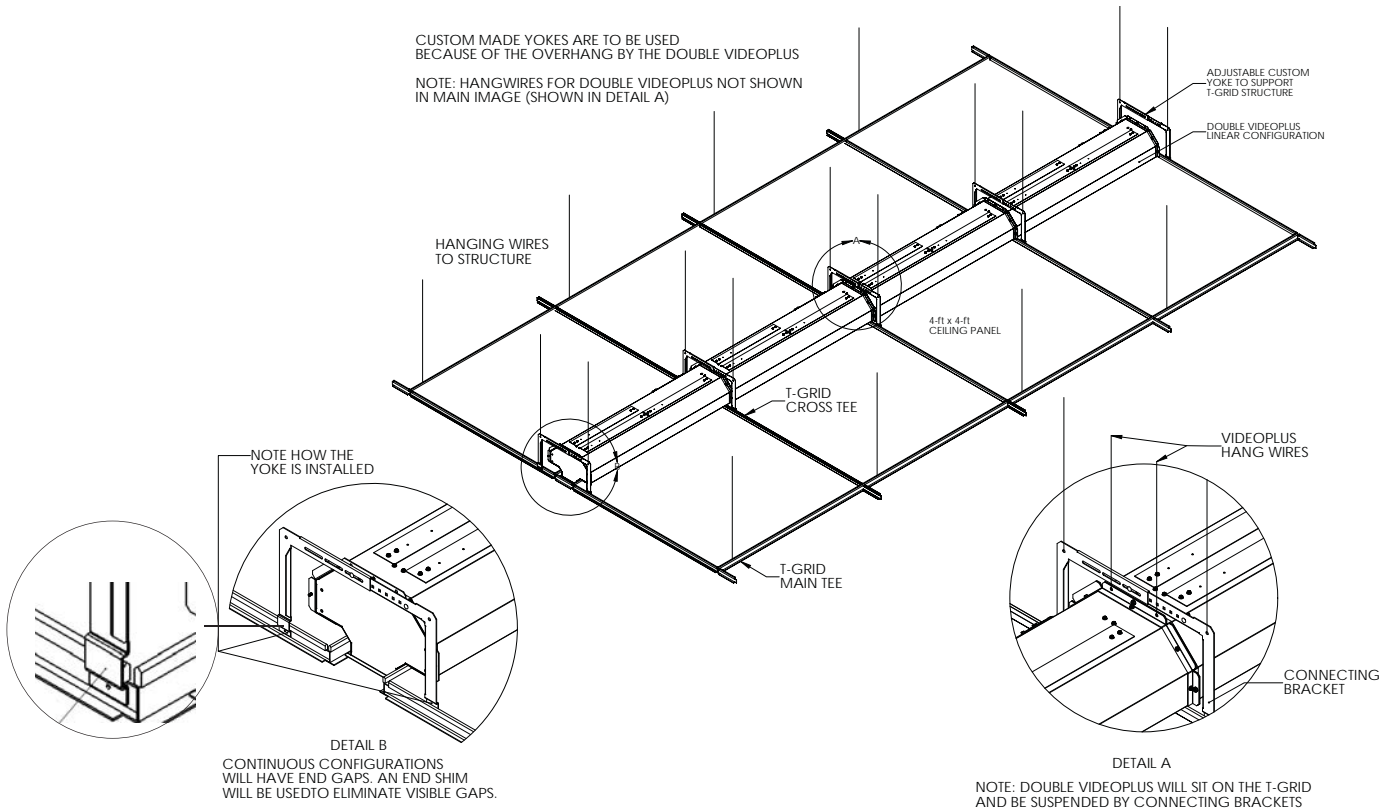
© 2015 Brightline LP All Rights Reserved

Specifications are subject to change without notice.

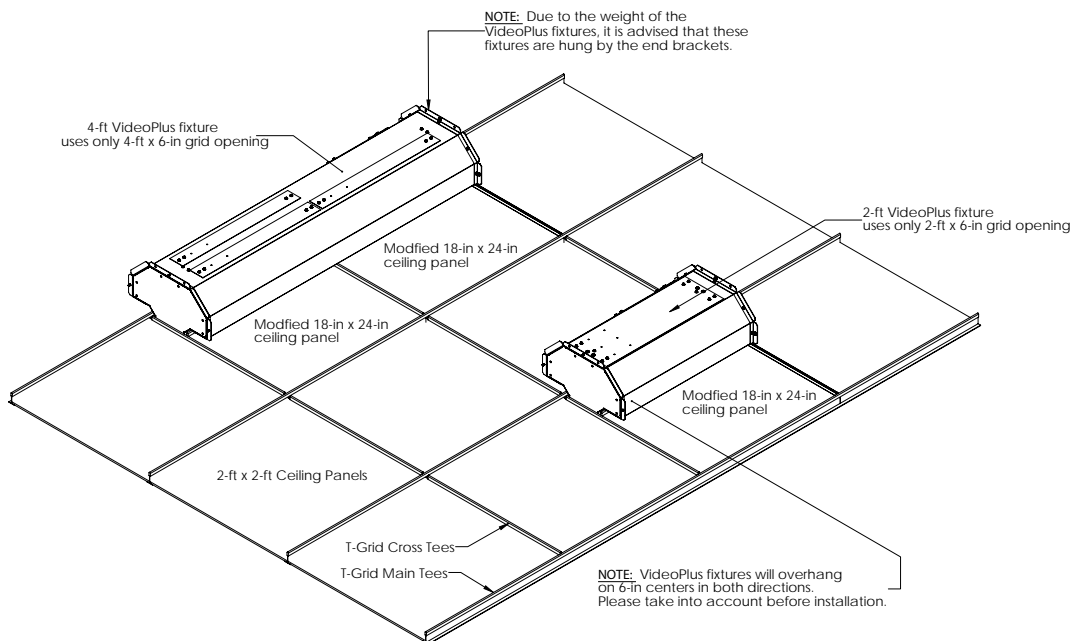
10/01/15



Continuous Run Ceiling Installation



Standard Ceiling Installation



580 Mayer Street - Building # 7 - Bridgeville, PA 15017 USA

Phone: 1.412.206.0106 - Fax: 1.412.206.0146



© 2015 Brightline LP All Rights Reserved