

Technical Note

Product Name: EDID Manager Software

Current Version:

Ver.Type	Ver No.	Date
Firmware	–	–
Software	–	–
Web	–	–
Hardware	–	–

Technical Note Date: January 16, 2020

This document explains how to use the EDID Manager Software.

Setting EDID via EDID Manager

To utilize EDID Manager:

1. Download the EDID Manager software to your PC.
2. Power the device.
3. Connect the device to your PC.
4. Open EDID Manager. The following window appears:

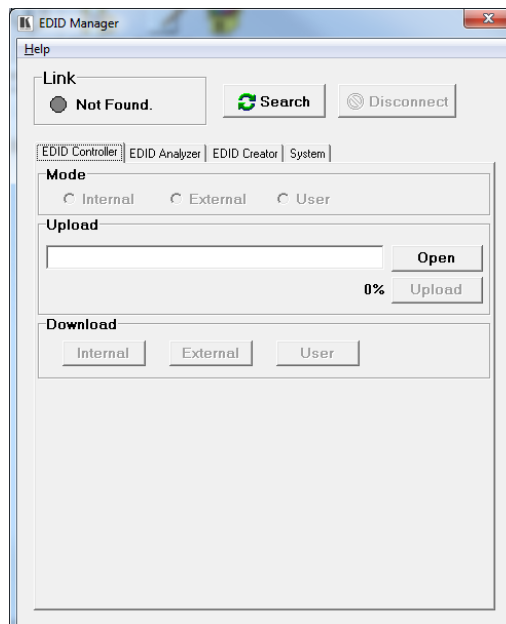


Figure 1: EDID Manager

Technical Note

5. Click **Search**.

The device is connected and indicates the current EDID source (Internal, External or User).

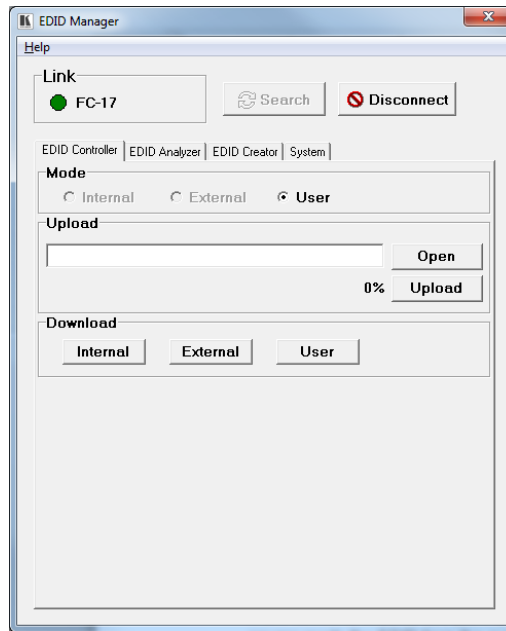


Figure 2: EDID Manager – Wall-plates Connected

Use EDID Manager to:

- [Upload the EDID and Store to the Device](#), see page [3](#).
- [Download the EDID from Wall-plates to the PC](#), see page [6](#).
- [Analyze EDID](#), see page [7](#).
- [Create or Modify an Existing EDID](#), see page [8](#).
- [View the Firmware Version](#), see page [11](#).

Technical Note

Upload the EDID and Store to the Device

To upload EDID from the PC and store to the device:

1. Open EDID Manager.
2. Select the **EDID Controller** tab.
3. Click **Open** in the Upload area.

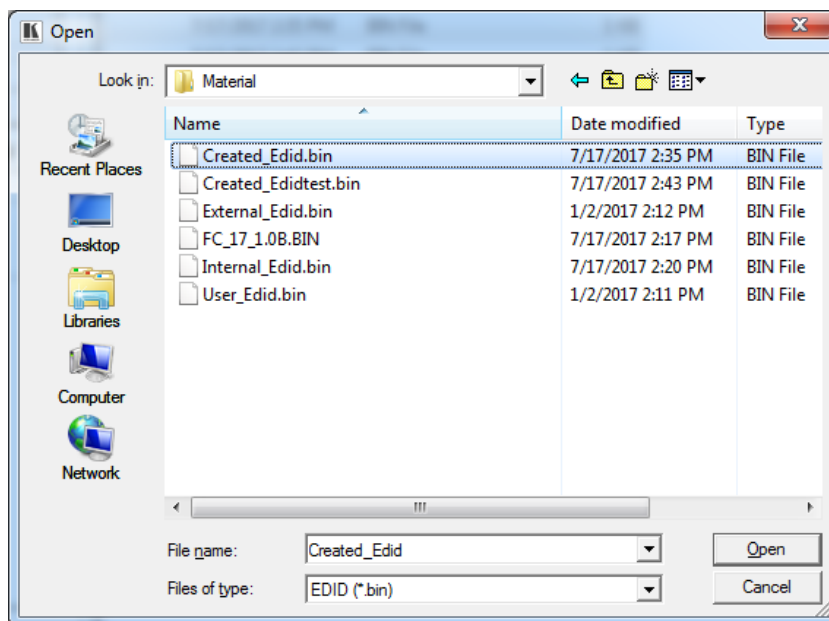


Figure 3: EDID Manager – Selecting an EDID file

Technical Note

4. Select an EDID file and click **Open**.

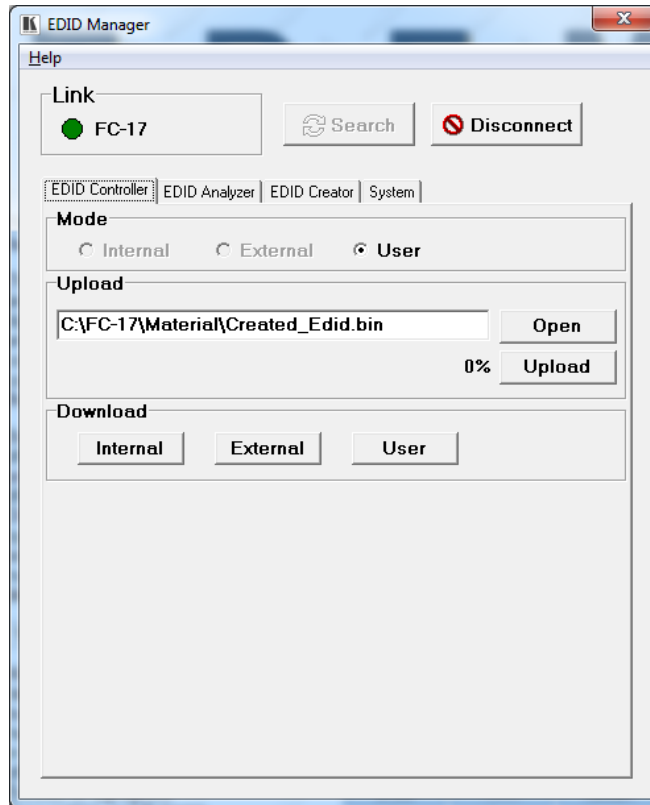


Figure 4: EDID Manager – EDID File Selected

Technical Note

5. Click **Upload**. The selected EDID file is uploaded to **User**.

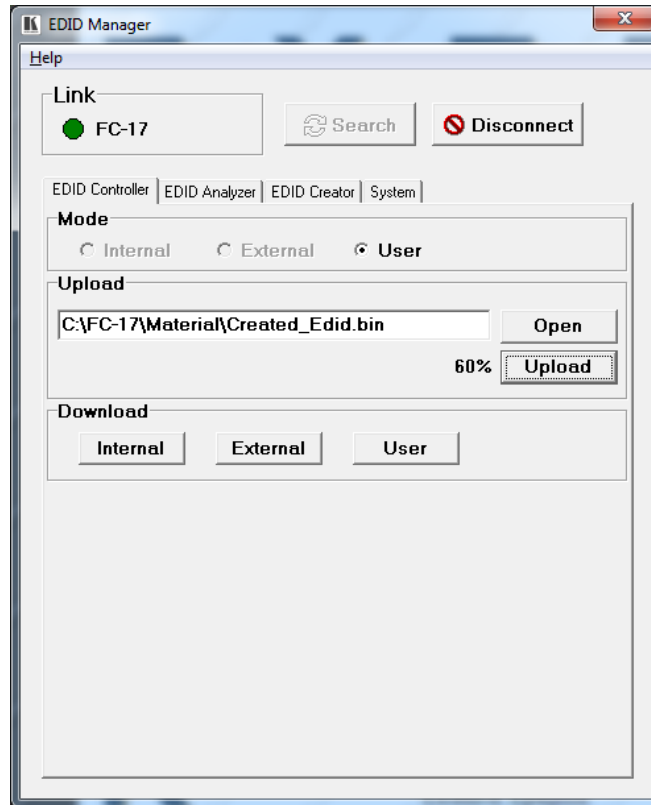


Figure 5: EDID Manager – Uploading EDID

Technical Note

Download the EDID from Wall-plates to the PC

To download EDID to your PC:

1. Open EDID Manager.
2. Select the **EDID Controller** tab.
3. Click an EDID source: **Internal**, **External** or **User**.
The **Save As** window opens:

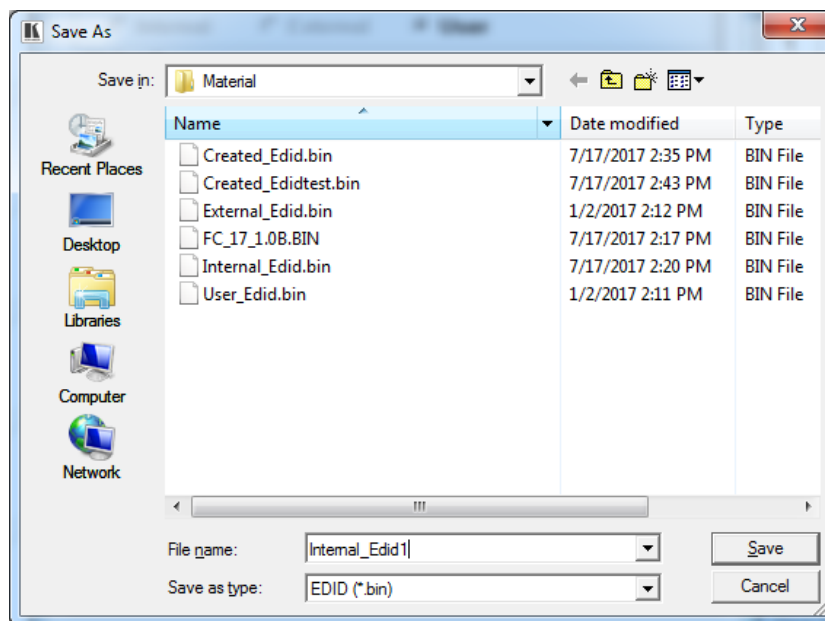


Figure 6: EDID Manager – Saving an EDID

4. Click **Save**.
The selected EDID is saved to your PC.

Technical Note

Analyze EDID

To analyze EDID:

1. Open EDID Manager.
2. Select the **EDID Analyzer** tab.

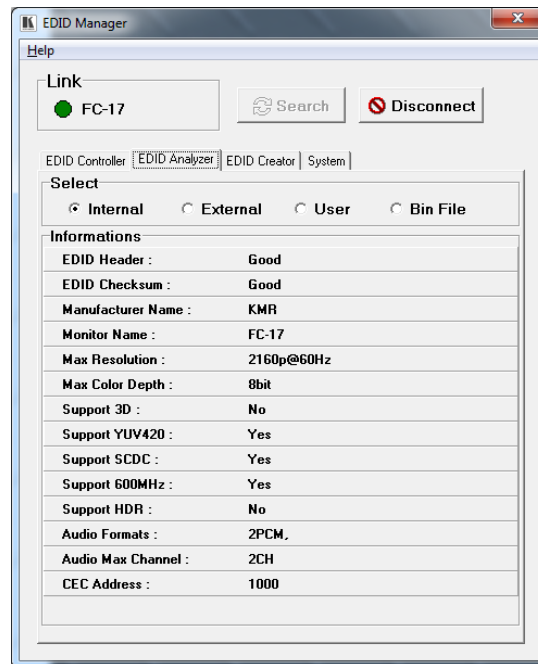


Figure 7: EDID Manager – EDID Analyzer Tab

3. View basic EDID details.

Technical Note

Create or Modify an Existing EDID

To create or modify and existing EDID:

1. Open EDID Manager.
2. Select the **EDID Creator** tab.

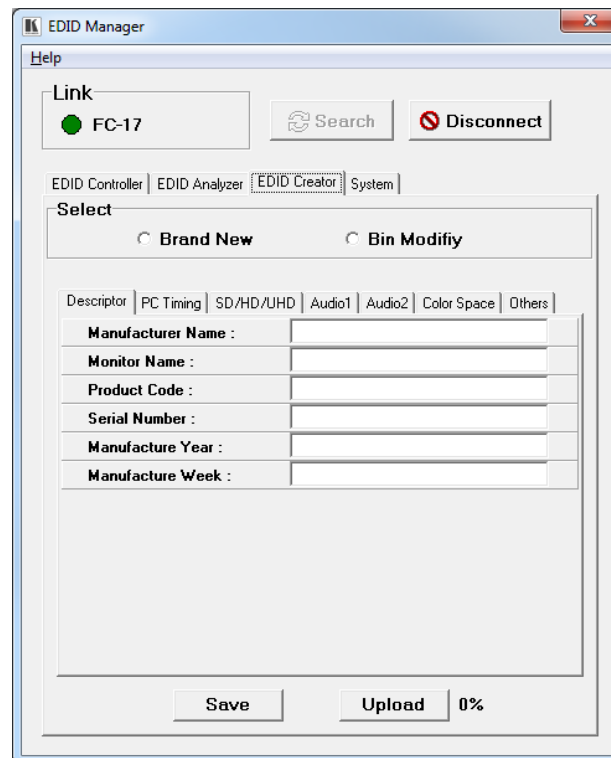


Figure 8: EDID Creator – Wall-plates Connected

Technical Note

3. Check the TYPE of EDID:
 - **Brand New** – to create a new bin file.

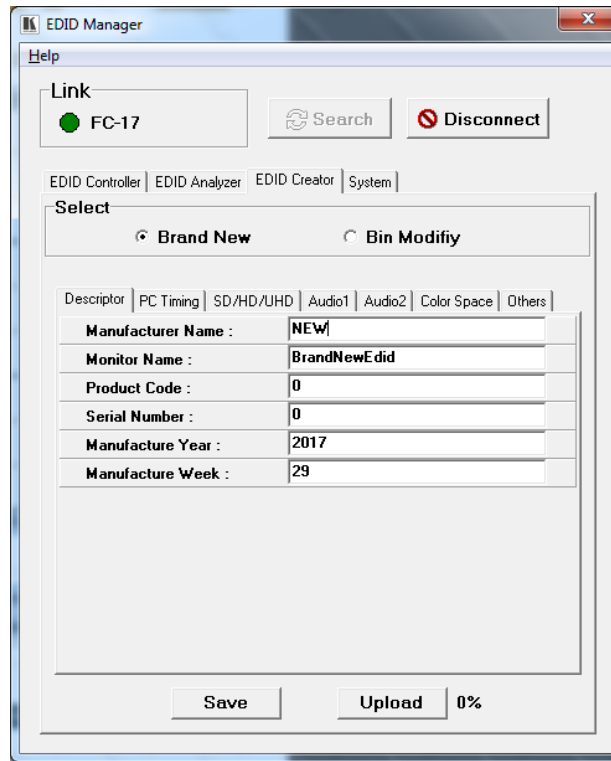


Figure 9: EDID Manager – Wall-plates Connected

- **Bin Modify** – to change an existing bin file.
Open a file from the **Open** window and click **Open**.

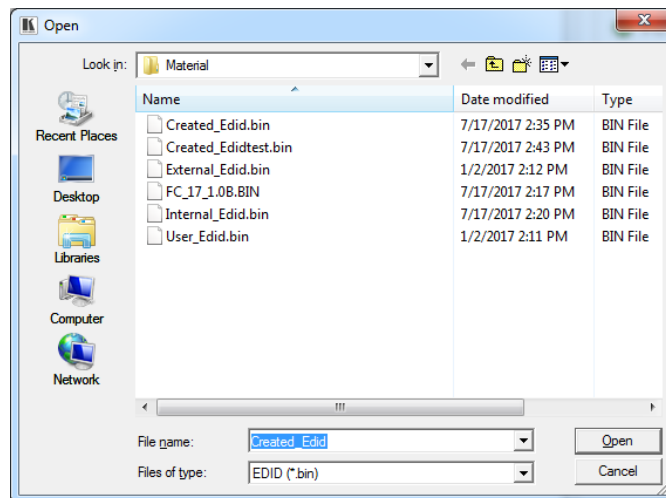


Figure 10: EDID Manager – Selecting a Bin File

Technical Note

4. Enter the EDID description and information fields and then enter the new data, as required, to each tab:
 - PC Timing – EDID supported resolution and refresh rates.

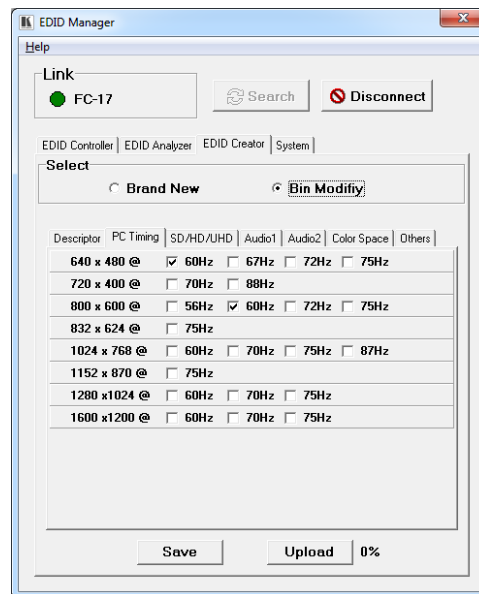


Figure 11: EDID Manager – EDID Creator Tab

- SD/HD/UHD – EDID supported resolution and refresh rates.
 - Audio1 and Audio2 –EDID supported audio formats, audio frequencies, channels and speaker locations.
 - Color Space – EDID supported color formats and bit depths.
 - Other data – CEC Address.
5. Click **Save**.
 6. Click **Upload** to upload the Bin file to USER.

Technical Note

View the Firmware Version

To view the firmware version:

1. Open EDID Manager.
2. Select the **System** tab.
3. View the Firmware Version.

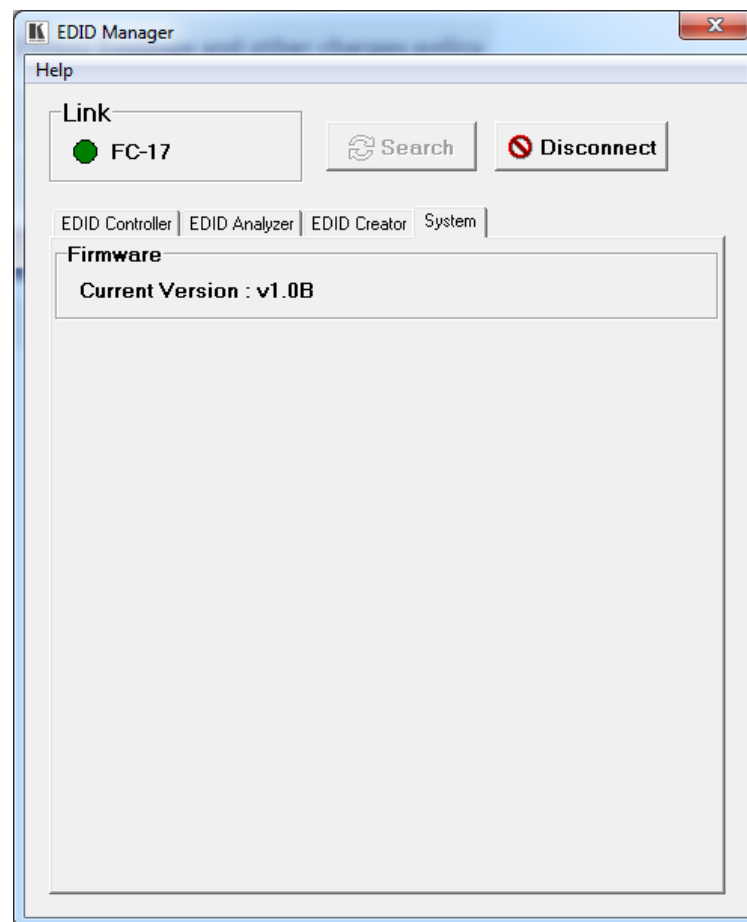


Figure 12: EDID Manager – System Tab

Technical Note

Upgrading the Firmware

You can upgrade the firmware via EDID Manager.

To upgrade the firmware:

1. Open EDID Manager on your PC.
2. Power the device while pressing the recessed PROG push button ⁽¹¹⁾. The device enters the ISP (Program) Mode.
3. Connect to your PC via the PROG USB port.
4. Click **Search** to connect the device.

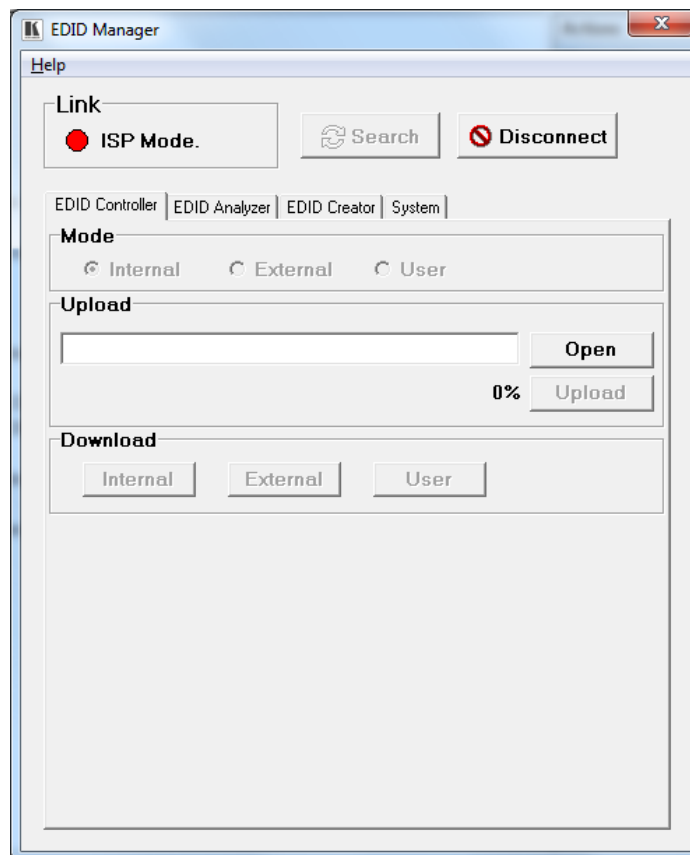


Figure 13: EDID Manager – ISP Mode

Technical Note

5. Select the **System** tab.

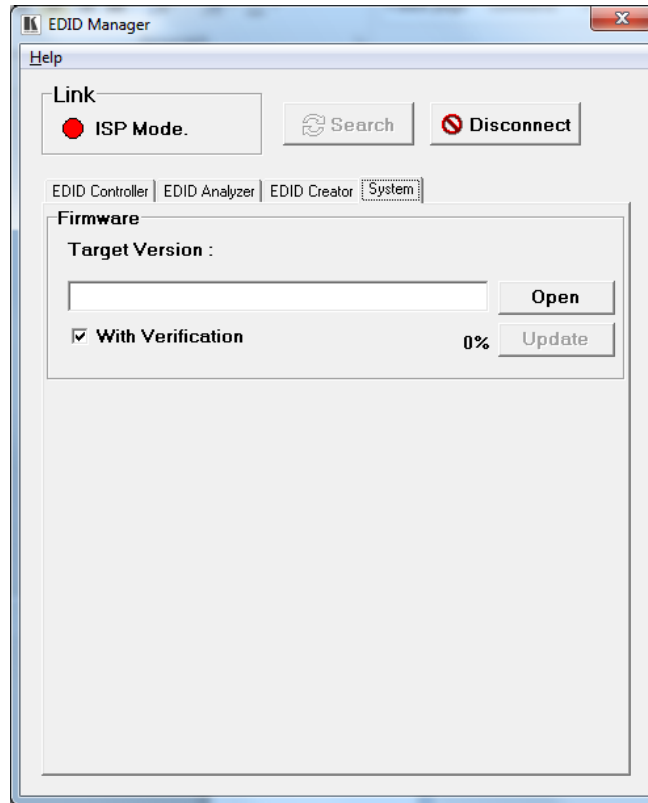


Figure 14: Firmware Upgrade – System Tab

6. Click **Open**.

Technical Note

7. Select the new firmware file and click **Open**.

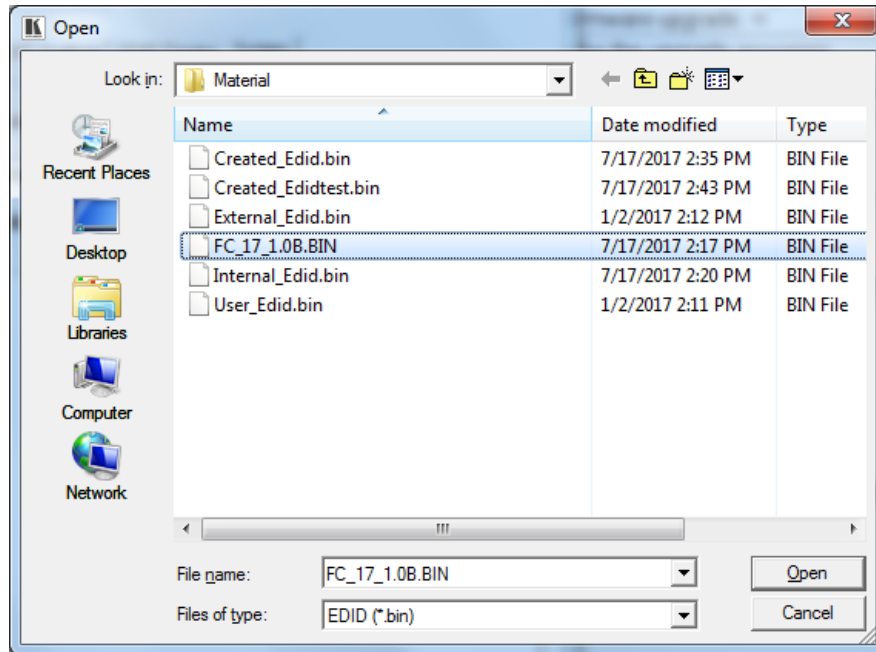


Figure 15: Firmware Upgrade – Opening the Firmware File

Technical Note

8. Click **Open**.

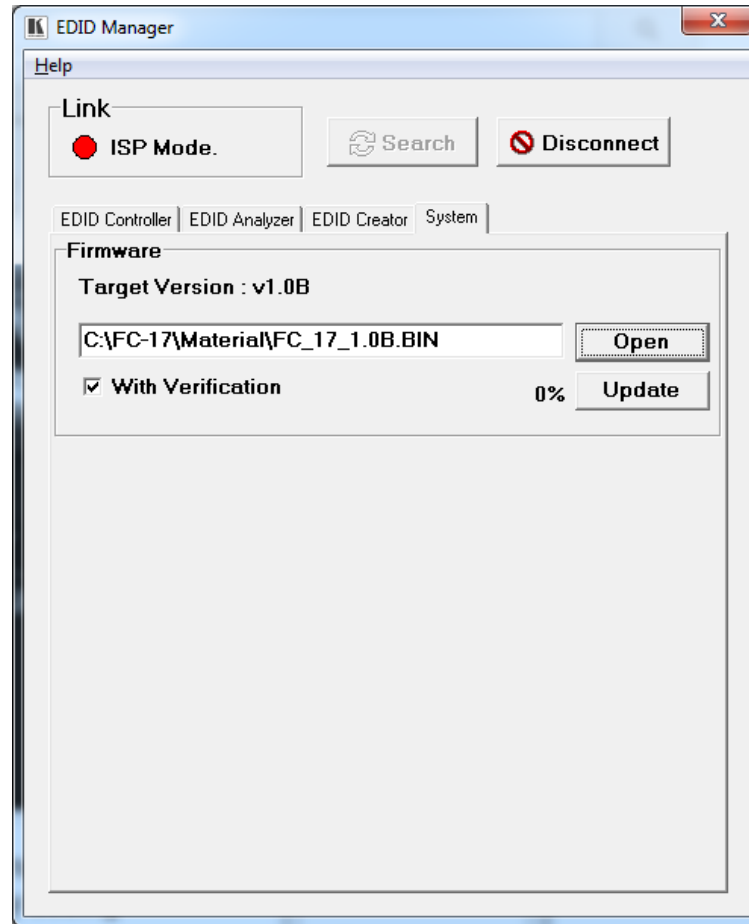


Figure 16: Firmware Upgrade – New Firmware Uploaded

Technical Note

9. Click **Update**.
Wait for update completion.

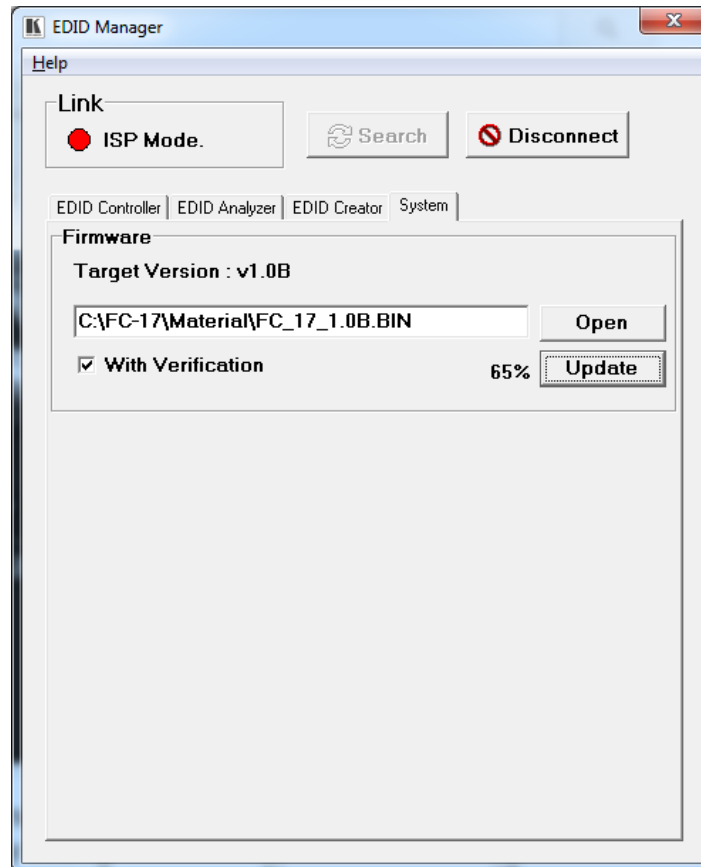


Figure 17: EDID Manager – Wall-plates Connected

10. Upon completion, disconnect the power and reconnect for normal operation.