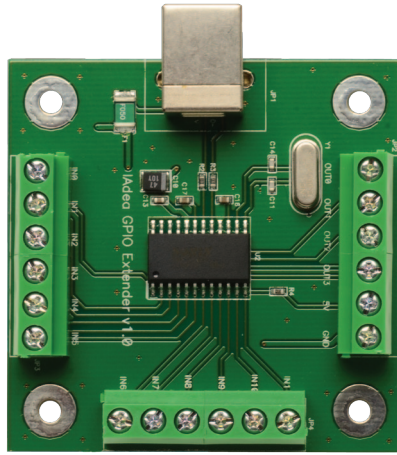
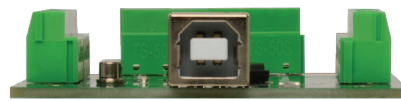


# Create interactive Digital Signage



EXT-DSWF-GPIO

(shown actual size)



## Add interactivity with relays and switches to enhance your Digital Signage presentation

The Gefen General Purpose Input/Output (GPIO) module works with the Gefen Digital Signage Player with Wi-Fi (or Wi-Fi Plus), allowing the professional integrator to add optical sensors, relays, lighting controls, buttons, and other devices to existing digital signage presentations. Use the GPIO module with a motion sensor to automatically play digital signage content when someone approaches a screen or to trigger a relay to change the lighting at a kiosk or other destination—the possibilities are limited only by your creativity. External events are sent via USB into the Digital Signage Player and integrated into the SMIL script to trigger playlists. The GPIO module draws minimal power by using simple open-close circuits on the input and output ports.

### How It Works

Connect the included USB cable from one of the USB ports on the Digital Signage Player w/ Wi-Fi (or Wi-Fi Plus) to the USB port on the GPIO. Connect switches or sensors to the inputs. Connect lights or relays to the outputs.

### Features\*

- 10 inputs
- 4 outputs
- Works with the Gefen Digital Signage Player with Wi-Fi and Digital Signage Player with Wi-Fi Plus

### Specifications\*

- Input ports: (10) Short-to-ground for “on” state, “float” for “off” state
- Output ports: (4) Short-to-ground for “on” state, high-impedance for “off” state
- Connectors: Phoenix (Euroblock) type
- Input Range: 0 – 5V DC (max.)
- Current Draw: 250mA (max.) (from USB port)
- Output current: 20mA per port (max.)
- Total output port current: 50mA (max.)
- Dimensions (W x H x D): 2.3” x 0.5” x 2.3” (59mm x 12.75mm x 56mm)
- Unit Weight: 1.3 oz

### Gefen, LLC

20600 Nordhoff Street, Chatsworth CA 91311  
 Tel. (818) 772-9100 (800) 545-6900 Fax (818) 772-9120

[www.gefen.com](http://www.gefen.com)

\*Features and specifications are subject to change without notice.  
 All trademarks are the property of their respective owners.