

Fiber Optic for HDMI Pigtail Modules

EXT-HD-CP-FM10

User Manual
Release A3



Important Safety Instructions

GENERAL SAFETY INFORMATION

1. Read these instructions.
2. Keep these instructions.
3. Heed all warnings.
4. Follow all instructions.
5. Do not use this product near water.
6. Clean only with a dry cloth.
7. Do not block any ventilation openings. Install in accordance with the manufacturer's instructions.
8. Do not install or place this product near any heat sources such as radiators, heat registers, stoves, or other apparatus (including amplifiers) that produce heat.
9. Do not defeat the safety purpose of the polarized or grounding-type plug. A polarized plug has two blades with one wider than the other. A grounding type plug has two blades and a third grounding prong. The wide blade or the third prong are provided for your safety. If the provided plug does not fit into your outlet, consult an electrician for replacement of the obsolete outlet.
10. Protect the power cord from being walked on or pinched particularly at plugs, convenience receptacles, and the point where they exit from the apparatus.
11. Only use attachments/accessories specified by the manufacturer.
12. To reduce the risk of electric shock and/or damage to this product, never handle or touch this unit or power cord if your hands are wet or damp. Do not expose this product to rain or moisture.
13. Unplug this apparatus during lightning storms or when unused for long periods of time.
14. Refer all servicing to qualified service personnel. Servicing is required when the apparatus has been damaged in any way, such as power-supply cord or plug is damaged, liquid has been spilled or objects have fallen into the apparatus, the apparatus has been exposed to rain or moisture, does not operate normally, or has been dropped.
15. Batteries that may be included with this product and/or accessories should never be exposed to open flame or excessive heat. Always dispose of used batteries according to the instructions.

Warranty Information

Gefen warrants the equipment it manufactures to be free from defects in material and workmanship.

If equipment fails because of such defects and Gefen is notified within two (2) years from the date of shipment, Gefen will, at its option, repair or replace the equipment, provided that the equipment has not been subjected to mechanical, electrical, or other abuse or modifications. Equipment that fails under conditions other than those covered will be repaired at the current price of parts and labor in effect at the time of repair. Such repairs are warranted for ninety (90) days from the day of reshipment to the Buyer.

This warranty is in lieu of all other warranties expressed or implied, including without limitation, any implied warranty or merchantability or fitness for any particular purpose, all of which are expressly disclaimed.

1. Proof of sale may be required in order to claim warranty.
2. Customers outside the US are responsible for shipping charges to and from Gefen.
3. Copper cables are limited to a 30 day warranty and cables must be in their original condition.

The information in this manual has been carefully checked and is believed to be accurate. However, Gefen assumes no responsibility for any inaccuracies that may be contained in this manual. In no event will Gefen be liable for direct, indirect, special, incidental, or consequential damages resulting from any defect or omission in this manual, even if advised of the possibility of such damages. The technical information contained herein regarding the features and specifications is subject to change without notice.

For the latest warranty coverage information, refer to the Warranty and Return Policy under the Support section of the Gefen Web site at www.gefen.com.

PRODUCT REGISTRATION

Please register your product online by visiting the Register Product page under the Support section of the Gefen Web site.

Contacting Gefen Technical Support

Gefen, LLC
c/o Customer Service
20600 Nordhoff St.
Chatsworth, CA 91311

Telephone: (818) 772-9100
(800) 545-6900

Fax: (818) 772-9120

Email: support@gefen.com

Visit us on the Web: www.gefen.com

Technical Support Hours: 8:00 AM to 5:00 PM Monday - Friday, Pacific Time

Fiber Optic for HDMI Pigtail Modules

is a trademark of Gefen, LLC.

Important Notice

Gefen, LLC reserves the right to make changes in the hardware, packaging, and any accompanying documentation without prior written notice.

Operating Notes

- In most situations, the Sender pigtail module does not need to be externally powered unless the source does not supply enough power through the HDMI connector. If the Sender requires a separate power supply only use Gefen part no. EXT-PS52AIP-1.3. Using a different power supply other than the recommended type may cause fatal damage to the Sender pigtail module.
- The maximum extension distances are listed based on the type of fiber optic cable that is being used:
 - ▶ OM1: Up to 300 meters
 - ▶ OM2 and OM3: Up to 1000 meters

Features and Packing List

Features

- Extends HDMI up to 3300 feet (1000 meters) using a single-strand 50/125µm multimode (OM2/OM3) SC-terminated fiber optic cable
- Supports resolutions up to 1080p Full HD
- Supports HD lossless audio: LCPM 7.1 audio, Dolby® Digital Plus, Dolby® TrueHD, and DTS-HD® Master Audio™
- Fiber optic transmission eliminates electromagnetic interference (EMI)
- Pigtail design relieves stress and clutter on the source and display connector panels
- 3DTV pass-through
- DDC bidirectional support
- HDCP pass-through
- Supports Deep Color
- Compact Sender and Receiver modules provide a clean, easy installation
- FCC and CE compliant for EMI/RFI emission

Packing List

The *Fiber Optic for HDMI Pigtail Modules* ships with the items listed below. If any of these items are not present in your box when you first open it, immediately contact your dealer or Gefen.

- 1 x HD Extender 1FO - Sender Pigtail module
- 1 x HD Extender 1FO - Receiver Pigtail module
- 1 x 5V DC power supply
- 1 x Quick-Start Guide

Table of Contents

01 Getting Started

Cable Layout	2
Sender Module	2
Receiver Module	3
Installation	4
Connecting the Fiber Optic for HDMI Pigtail Modules	4
Sample Wiring Diagram	4
Power Indicators	5

02 Appendix

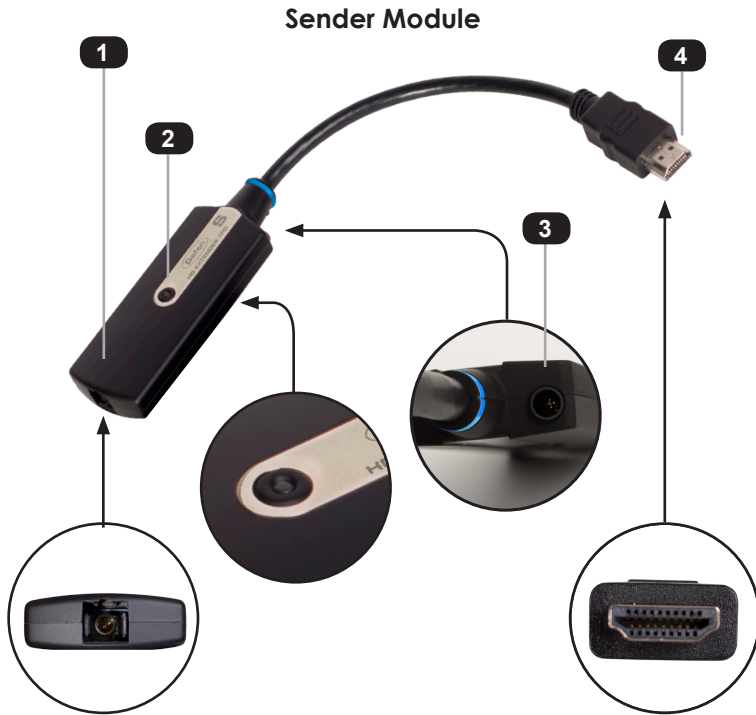
Specifications	8
----------------------	---

Fiber Optic for HDMI Pigtail Modules

01 Getting Started

Cable Layout	2
Sender Module	2
Receiver Module	3
Installation	4
Connecting the Fiber Optic for HDMI Pigtail Modules.....	4
Sample Wiring Diagram	4
Power Indicators	5

Cable Layout



ID	Name	Description
1	Fiber optic connector	Connect an SC-terminated fiber optic cable from this connector to the fiber optic connector on the Receiver pigtail module.
2	Power indicator	This LED will glow bright green when the Hi-Def source is supplying sufficient power to the Sender module. If the LED flashes green, then the source is unable to power the Sender module. See Power Indicators for more information.
3	Power receptacle	If the Hi-Def source does not supply enough power to the Sender module, using the HDMI connector, connect a 5V DC power supply (not included) to this power receptacle.
4	HDMI connector	Connect this end of the Sender pigtail module to the Hi-Def source.

Receiver Module



ID	Name	Description
1	Fiber optic connector	Connect an SC-terminated fiber optic cable from this connector to the fiber optic connector on the Sender pigtail module.
2	Power indicator	This LED will glow bright green when the included 5V DC power supplies is connected to the power receptacle on the Receiver module.
3	Power connector	Connect the included 5V DC power supply to this power receptacle.
4	HDMI connector	Connect this end of the Receiver pigtail module to the HDTV display.

Installation

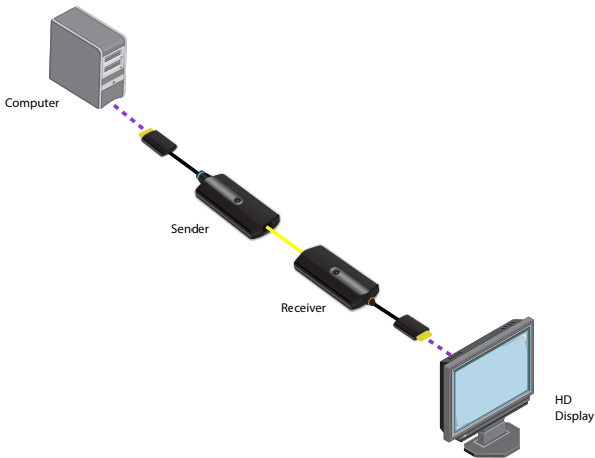
Connecting the Fiber Optic for HDMI Pigtail Modules

1. Connect the Sender pigtail module to the Hi-Def source.
2. Connect the Receiver pigtail module to the HDTV display.
3. Connect a single strand of SC-terminated fiber optic cable between the fiber optic connectors on the Sender and Receiver pigtail module. Refer to the Operating Notes for information on fiber optic cable-types and distances.
4. Connect the included 5V DC power supplies to the Receiver module.



NOTE: The Sender module does not need to be externally powered unless the Hi-Def source does not supply enough power through the HDMI connector. The Receiver module must always be powered using the included 5V DC power supply.

Sample Wiring Diagram



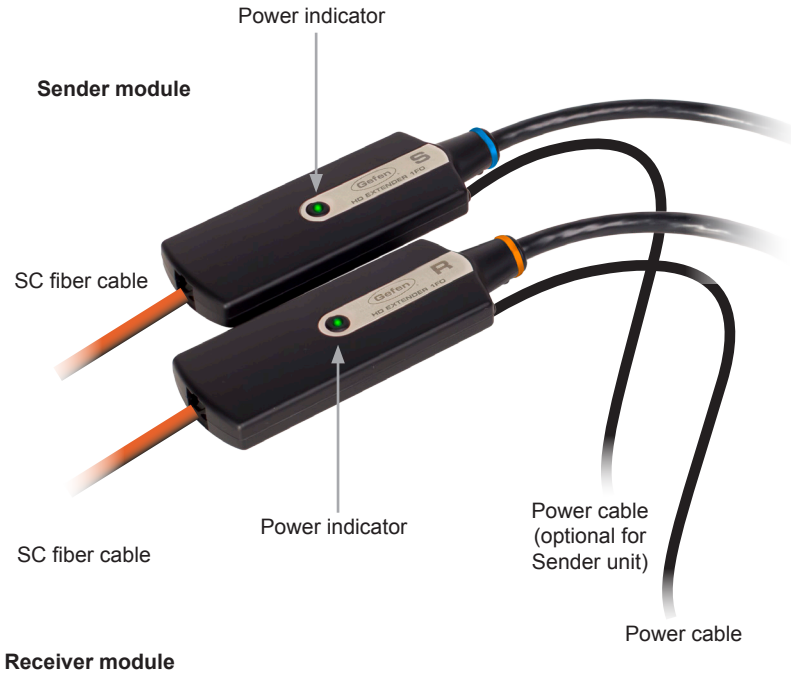
HDMI 
FIBER OPTIC CABLE 

EXT-HD-CP-FM10

Power Indicators

The power indicators on both the Sender and Receiver modules of the Fiber Optic for HDMI Pigtail Modules provide information about the current power state.

- If the power indicator on both the Sender and Receiver module glows bright green, then both the Sender and Receiver module are powered.
- If either power indicator is off, then the module is not powered. Ensure that the power adapter is securely connected to the power receptacle on the module.



DisplayPort Fiber Optic Pigtail Modules

02 Appendix

Specifications	8
----------------------	---

Specifications

Supported Formats

Resolution (max.)	• 2560 x 1600
-------------------	---------------

Electrical

Video bandwidth	• 3.5 Gb/s (per channel)
Power indicators (Sender / Receiver)	• 1 x LED, green

Connectors

Video Input (Sender)	• 1 x DisplayPort 20-pin, male
Video Output (Receiver)	• 1 x DisplayPort 20-pin, male
Link (Sender / Receiver)	• 1 x SC-type

Operational

Power Supply (Receiver)	• 5V / 2A DC
Power Consumption	• 1.5W (max.)
Operating Temperature	• +32 to +122° F (0 to +50° C)
Storage Temperature	• -4 to +158° F (-20 to +70° C)
Operating Humidity	• 10 to 80% RH (non-condensing)

Physical

Dimensions (W x H x D)	• 1.50" x 0.47" x 3.51" (38.10mm x 11.93mm x 89.15mm)
Shipping Weight	• 1.0 lb (0.45 kg)



Stretch it, Switch it, Split it, Control it.
Gefen's got it. ®

20600 Nordhoff St., Chatsworth CA 91311
1-800-545-6900 818-772-9100 fax: 818-772-9120
www.gefen.com support@gefen.com

