

PLAYER ONE

AUDIO PLAYER

Local and Streaming Audio Player



USER MANUAL

INDEX

| | |
|--|----|
| 1. IMPORTANT REMARK..... | 3 |
| 2. IMPORTANT SAFETY INSTRUCTIONS | 4 |
| 3. IMPORTANT NOTE..... | 5 |
| 4. INTRODUCTION | 6 |
| 5. INSTALLATION AND CONNECTIONS..... | 7 |
| 5.1. Location, set up and ventilation..... | 7 |
| 5.2. AC connection and powering on..... | 7 |
| 5.3. Audio output connections | 7 |
| 5.4. Ethernet port for configuration and Internet connection | 7 |
| 5.5. Wi-Fi interface for configuration and Internet connection | 8 |
| 5.6. GPI remote control ports..... | 9 |
| 6. FRONT PANEL..... | 10 |
| 7. STARTUP | 11 |
| 7.1. Power up | 11 |
| 7.2. Main menu..... | 13 |
| 7.3. Local media playback | 14 |
| 7.3.1. Playing files stored on USB storage devices | 14 |
| 7.3.2. Playing files stored on MICRO SD memory cards | 15 |
| 7.4. Audio streaming playback | 16 |
| 7.4.1. Audio streaming playback via AirPlay | 16 |
| 7.4.2. Audio streaming playback via DLNA..... | 17 |
| 7.4.3. Listening to an Internet radio station..... | 18 |
| 7.4.4. Audio streaming playback over the Internet | 19 |
| 7.5. Configuration Menu | 20 |
| 7.6. Lock Menu | 21 |
| 8. PLAYER ONE FUNCTION LIST | 22 |
| 9. PLAYER ONE FUNCTION DIAGRAM | 22 |
| 10. TECHNICAL SPECIFICATIONS..... | 23 |

1. IMPORTANT REMARK




WARNING: SHOCK HAZARD - DO NOT OPEN
AVIS: RISQUE DE CHOC ÉLECTRIQUE - NE PAS OUVRIR



The lightning flash with arrowhead symbol, within an equilateral triangle, is intended to alert the user to the presence of uninsulated “dangerous voltage” within the product’s enclosure that may be of sufficient magnitude to constitute a risk of electric shock to persons.



The exclamation point within an equilateral triangle is intended to alert the user to the presence of important operating and maintenance (servicing) instructions in the literature accompanying the appliance.

WARNING (If applicable): The terminals marked with symbol of “” may be of sufficient magnitude to constitute a risk of electric shock. The external wiring connected to the terminals requires installation by an instructed person or the use of ready-made leads or cords.

WARNING: To prevent fire or shock hazard, do not expose this equipment to rain or moisture.

WARNING: An apparatus with Class I construction shall be connected to a mains socket-outlet with a protective earthing connection.

2. IMPORTANT SAFETY INSTRUCTIONS

1. Read these instructions.
2. Keep these instructions.
3. Heed all warnings.
4. Follow all instructions.
5. Do not use this apparatus near water.
6. Clean only with dry cloth.
7. Do not block any ventilation openings. Install in accordance with the manufacturer's instructions.
8. Do not install near any heat sources such as radiators, heat registers, stoves, or other apparatus (including amplifiers) that produce heat.
9. Do not defeat the safety purpose of the polarized or grounding type plug. A polarized plug has two blades with one wider than the other. A grounding type plug has two blades and a third grounding prong. The wide blade or the third prong are provided for your safety. If the provided plug does not fit into your outlet, consult an electrician for replacement of the obsolete outlet.
10. Protect the power cord from being walked on or pinched particularly at the plugs, convenience receptacles, and at the point where they exit from the apparatus.
11. Only use attachments/accessories specified by the manufacturer.
12. Unplug the apparatus during lightning sorts or when unused for long periods of time.
13. Refer all servicing to qualified personnel. Servicing is required when the apparatus has been damaged in any way, such as power supply cord or plug is damaged, liquid has been spilled or objects have fallen into the apparatus, the apparatus has been exposed to rain or moisture, does not operate normally, or has been dropped.
14. Disconnecting from mains: Switching off the POWER switch all the functions and light indicators of the amplifier will be stopped, but fully disconnecting the device from mains is done unplugging the power cord from the mains input socket. For this reason, it always shall remain readily operable.
15. Equipment is connected to a socket-outlet with earthing connection by means of a power cord.
16. The marking information is located at the bottom of apparatus.
17. The apparatus shall not be exposed to dripping or splashing and that no objects filled with liquids, such as vases, shall be placed on apparatus.

NOTE: *This equipment has been tested and found to comply with the limits for a Class A digital device, pursuant to part 15 of the FCC Rules. These limits are designed to provide reasonable protection against harmful interference when the equipment is operated in a commercial environment. This equipment generates, uses, and can radiate radio frequency energy and, if not installed and used in accordance with the instruction manual, may cause harmful interference to radio communications. Operation of this equipment in a residential area is likely to cause harmful interference in which case the user will be required to correct the interference at his own expense.*



WARNING: This product must not be discarded, under any circumstance, as unsorted urban waste. Take to the nearest electrical and electronic waste treatment centre.

NEEC AUDIO BARCELONA, S.L. accepts no liability for any damage that may be caused to people, animal or objects due to failure to comply with the warnings above.

3. IMPORTANT NOTE

Thank you for choosing our Ecler PLAYER ONE multimedia player!

It is **VERY IMPORTANT** to carefully read this manual and to fully understand its contents before any connection in order to maximize your use and get the best performance from this equipment.

To ensure optimal operation of this device, we strongly recommend that its maintenance be carried out by our authorised Technical Services.

Ecler PLAYER ONE comes with a 3-year warranty.

4. INTRODUCTION

PLAYER ONE is a compact stereo audio player able to play music content from local storage devices (USB/MICRO SD), Internet streaming services (online radios, etc.) and digital media exchange (DLNA, AirPlay) with the following main features:

Main features:

- 1 unbalanced stereo audio output, RCA connector and mini-jack (with stereo/mono selection).
- Compatible with mp3, ogg, WAV, AIFF and FLAC audio formats.
- One USB port and one MICRO SD card slot for access to local media content.
- Ethernet interface with RJ 45 connector for communication with web setup application as well as Internet streaming reception.
- Wi-Fi interface (client or master mode) for communication with web application configuration as well as Internet streaming reception.
- Fully configurable through web application (point-to-point or through the same LAN)
- 2 GPI (General Purpose Inputs) ports, to trigger the 2 available events.
- Silence detection event.
- Internal clock with up to 240h autonomy (without AC adapter) and automatic synchronization with NTP services.
- Front panel controls and indicators:
 - LCD display.
 - Digital encoder to navigate in the menus and set the parameters.
 - 6 backlit keys with pre-assigned function: ENTER, ESC, STOP, PLAY/PAUSE, NEXT and PREV.
- Modular firmware: the PLAYER ONE has a firmware with modular services that allow each user to personalize its operation and adapt it to the size of his project or to his business model. The firmware includes, among other functions and services:
 - Calendar event triggering
 - Synchronization of cloud content (Cloud Disk Sync): compatible with Google Drive service
 - Execution of scripts (user-written instruction files in lua language - www.lua.org).
 - Local file encryption (USB/MICRO SD)
 - Activity Log

Note: PLAYER ONE programming is done through the web application embedded in the unit. Refer to the [PLAYER ONE & PLAYER ZERO web GUI application manual](#) for more information.

5. INSTALLATION AND CONNECTIONS

5.1. Location, set up and ventilation

The PLAYER ONE has been specially designed to be used both as a desktop player and a 19" rackmount unit, occupying half a rack space (with 1UHRMKIT, optional mounting kit for standard rack cabinets).

In professional installations, it should preferably be placed in the same rack as the audio sources.

Since its power consumption is very low, forced ventilation is not necessary. However, avoid exposing the device to extreme temperature and the environment in which it is placed should be as dry and clean (no dust) as possible.

5.2. AC connection and powering on

The PLAYER ONE is powered by alternating current (AC) through its external power supply: 100-240 VAC, 50-60 Hz. This external power supply has several interchangeable connectors: American, European, British and Chinese.

The operating environment should be dry and be totally free of dust. Do not expose the unit to dripping or splashing. Do not place incandescent objects like candles on top of it.

If the unit requires any intervention and/or connection/disconnection, it must be powered off first. There are no user-serviceable parts within the unit. To avoid buzzing, do not allow the power cable to intertwine with audio shielded cables.

5.3. Audio output connections

The PLAYER ONE has 1 unbalanced stereo output on its rear panel.
The signal output connectors are 2 x RCA and 1 x stereo mini-jack.

5.4. Ethernet port for configuration and Internet connection

An RJ45 connector allows the unit to be connected to an Ethernet network or even directly (point-to-point) to a computer.

This connection provides access to Internet contents, and to the configuration of the unit using a web browser on the computer, which points to the IP address of the PLAYER ONE, showing the web application embedded in the unit. Refer to the [PLAYER ONE & PLAYER ZERO web GUI application manual](#) for more information.

5.5. Wi-Fi interface for configuration and Internet connection

A Wi-Fi interface allows the unit to be connected to a Wi-Fi network or even directly (point-to-point) to a computer by Wi-Fi.

This connection provides access to Internet contents, and to the configuration of the unit using a web browser on the computer, which points to the IP address of the PLAYER ONE, showing the web application embedded in the unit. Refer to the [PLAYER ONE & PLAYER ZERO web GUI application manual](#) for more information.

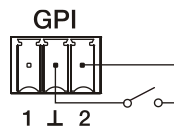
5.6. GPI remote control ports

The PLAYER ONE has 2 GPI control inputs on its rear panel. These inputs can be connected to an external physical device (e.g. a contact closure) and associated with an PLAYER ONE function:

- Load and play previously configured audio content
- Preset recall
- Audio playback with priority over the music program
- Transport bar control (PLAY/PAUSE, STOP, etc.)
- Internal triggering, to interact with other player services (scripts for example)

GPI connectors use 3-position screw terminal blocks (Euroblocks). The wiring is as follows:

| | | |
|--------------|---|-----------------|
| GPI terminal | > | -1, 2 terminals |
| Ground | > | ⊥ terminal |



Connecting cables can be up to 500 meters long with a minimum section of 0,5 mm².

Figure 1: Connection example of GPI 2

6. FRONT PANEL

The PLAYER ONE front panel provides the following elements:

- MICRO SD/MICRO SDHC slot: for local audio content playback. Up to 2TB. FAT16/32 format.
- USB 2.0 port: for local audio content playback. Up to 2TB. FAT16/32 and NTFS format.
- SP LED: *signal presence* indicator.
- NET LED: network (Internet) data reception indicator.
- LCD display: displays menus, player information, etc.
- CONTROL & SELECT digital encoder: allows menu navigation, parameter selection, etc.
- ESC key: allows you to exit the menu (return to the main screen). It also provides access to the lock menu.
- MENU key: provides access to the main menu and device configuration.
- PREV (⏮) key: skips to the previous song in the player playlist. Within the main or configuration menu, allows you to navigate through the different (previous) settings.
- STOP key (■): stops the current playback.
- PLAY/PAUSE (▶ ||) key: starts/pauses playback of the loaded item.
- NEXT key (⏭): skips to the next song in the player playlist. Within the main or configuration menu, allows you to navigate through the different (next) settings.



7. STARTUP

The PLAYER ONE has been designed to be used as a local media player, without prior configuration. However, Ecler recommends configuring PLAYER ONE with your web application to enjoy its full functionality. Please refer to the [PLAYER ONE & PLAYER ZERO web GUI application manual](#) to know all the functionality it offers.

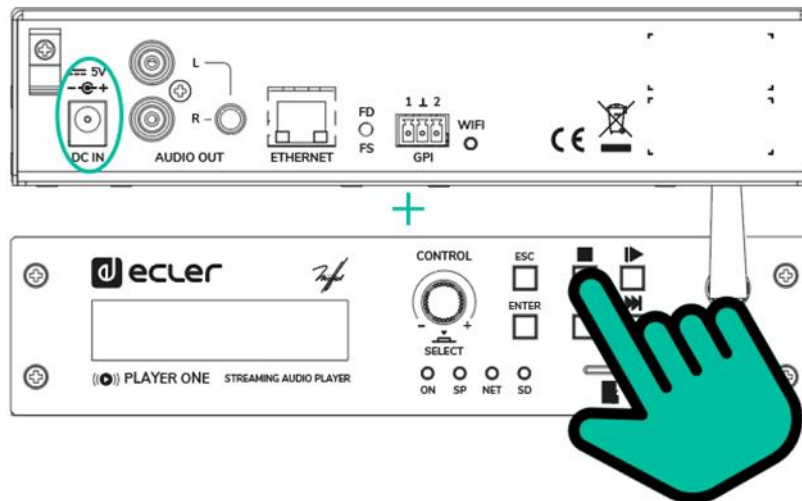
Plug the power cord into the back of the device to turn it on. A message will be displayed on the screen indicating that PLAYER ONE is starting.

Note: please check the firmware version of your device. It should be updated to the latest version to ensure that all features described in this manual are available. Visit www.ecler.com to download it.

7.1. Power up

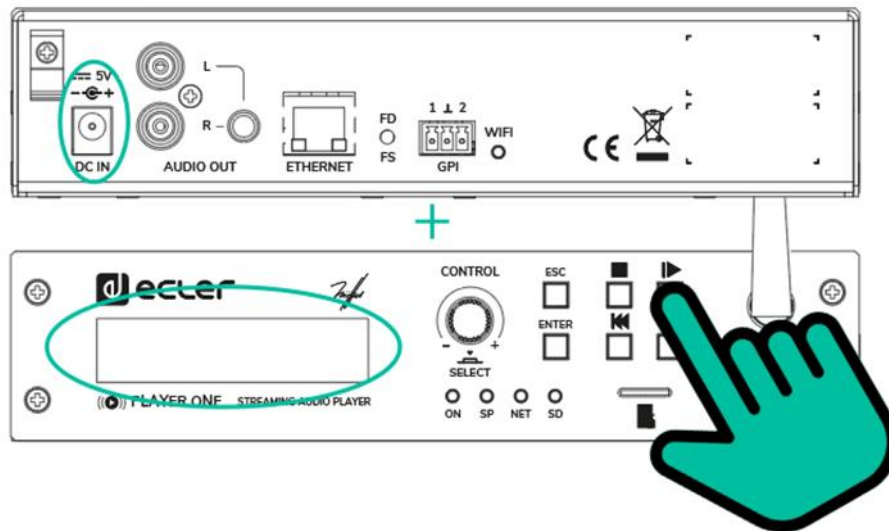
The PLAYER ONE has two functionalities that can be executed when turning on the device:

- Restore defaults: factory settings can be restored by turning on the device while holding down the STOP key. Follow the instructions on the PLAYER ONE LCD screen.



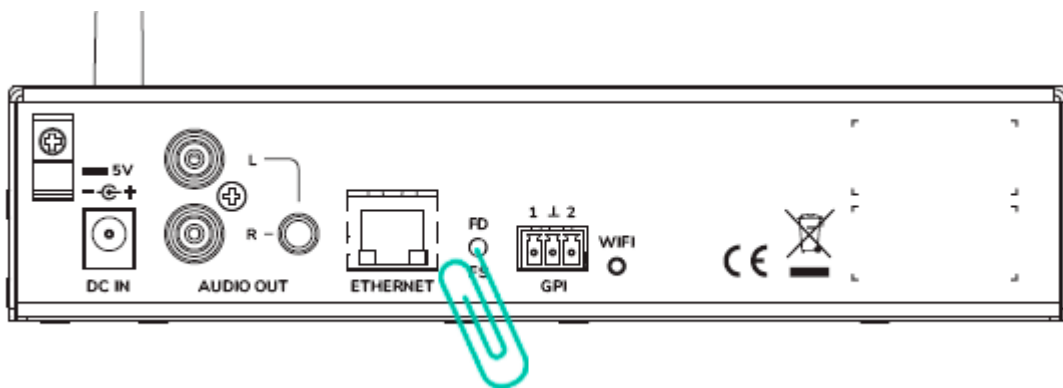
Note: If this action is performed, all device settings and parameter values are lost. Be sure to save a backup copy of the device settings before executing this action.

- Restore firmware: you can install the latest firmware published on the Ecler website or a firmware file hosted on one of the local storage systems (USB/MICRO SD) by turning on the device while holding down the PLAY button. Follow the instructions on the PLAYER ONE LCD screen.



Note: If this action is not performed correctly, you may lose all device settings and parameters. Be sure to save a backup copy of the device settings before executing this action.

They can also be done via the FD/FS button on the rear panel of the PLAYER ONE:



- Factory Default: Press and hold the FD/FS button on the rear panel for 10 seconds with a small pin or paper clip while the unit is powered on.
- File Safe (Restore firmware): Press and hold the FD/FS button on the rear panel for 5 seconds with a small pin or paper clip while the unit is powered on.

7.2. Main menu

The PLAYER ONE main menu allows you to make playback adjustments, such as selecting the audio source, loading presets, etc.

The main menu is accessed by pressing the MENU key. Navigation through the various menu items is performed using the NEXT (▶▶) and PREV (◀◀) keys, to respectively move to the next or previous one. Once you have chosen the item to be set, rotating the CONTROL & SELECT encoder allows you to select the different parameters. The selected parameter will start flashing until its selection is confirmed by pressing the CONTROL & SELECT encoder. If you change items (with the NEXT (▶▶) and PREV (◀◀) keys) or exit the menu by pressing ESC without confirming, the changes will not be applied, except for the volume whose changes are executed in real time.

To exit the main menu, press the ESC key.

The main menu consists of the following items:

- SOURCE: audio source. To select USB media (USB), MICRO SD/MICRO SDHC card (MMC), DLNA device (DLNA), AirPlay device (AIRPLAY) or any of the items previously configured as the source of a preset. Refer to the [PLAYER ONE & PLAYER ZERO web GUI application manual](#) to learn how to create audio sources. If the selected device is not found, cannot be read or if there is no connection available (DLNA/AirPlay), the display indicates that the device is not available (UNAVAILABLE).
- PRESET: preset (configuration memory) recall. Allows you to select from 20 user presets. Refer to the [PLAYER ONE & PLAYER ZERO web GUI application manual](#) for information on how to configure presets.
- VOLUME: volume control. Allows real-time adjustment of the player volume. 0dB corresponds to the maximum value of the player. Press the CONTROL & SELECT encoder to mute the player output (MUTE). Press it again to deactivate MUTE.
- REPEAT: track repeat modes within a playlist.
 - PLAY ALL: plays the playlist only once.
 - PLAY ONE: plays the track only once.
 - REPEAT ALL: when the playlist ends, the same list starts playing again.
 - REPEAT ONE: when the track ends, the same track starts playing again.
- PLAY MODE: playback mode.
 - SEQUENTIAL: sequential playback (same alphanumeric order as the storage device).
 - RANDOM: random playback.
- FADE: transition mode between audio tracks inside the playlist.

- OFF: transition without fades. Once a track ends, the next track in the playlist starts playing.
- XFADE: crossfade. the transition between tracks progressively reduces the volume level of the ending track as the next track volume level gradually increases, merging both tracks for a short time until the starting track reaches its nominal volume level.
- FADE: the ending track fades out. After this, the next track fades in until it reaches its nominal volume level. There's no crossfade between tracks.
- BOOT MODE: reset mode. Allows you to adjust the startup parameters of the player.
 - KEEP STATUS: at start-up, the last settings made just before shutdown are retained: player status (PLAY/STOP), volume, repeat mode, fade, play mode and playlist.
 - LOAD PRESET1: at start-up, preset 1 is always loaded. The settings of this preset can be configured using the web application of the device.

7.3. Local media playback

7.3.1. Playing files stored on USB storage devices

Insert USB media containing audio files in the USB port. Then press the MENU key to access the main menu. In the SOURCE submenu, select the USB source using the CONTROL & SELECT digital encoder to navigate through the different parameters and press the encoder to confirm (SELECT). The selected parameter will flash until your selection is confirmed. Press ▶ in the transport bar to start playing content.

If no media is found or the media cannot be read, the display will show the message: USB UNAVAILABLE (flashing). If this occurs, please check that the media is properly inserted and that it meets the specifications. If there are no files with one of the accepted audio formats, the message "NOT FOUND" will be displayed. If this happens, please check that the files meet the specifications.



Figure 2: PLAYER ONE playing a file from USB media

The CONTROL & SELECT digital encoder allows you to access additional information about the playback track and the playlist. Press it once to access playback track information, displaying: track name, audio format (mp3, wav, etc.), bitrate (kbps), track duration (mm:ss), and sample rate (kHz).

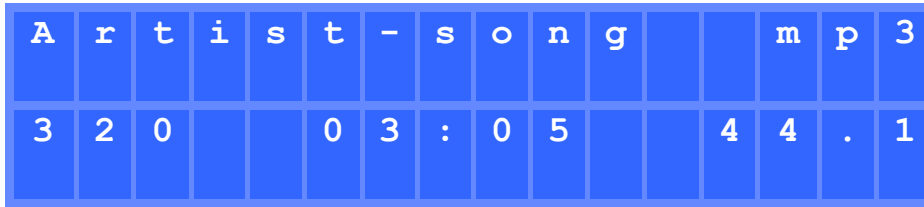


Figure 3: playback track information

Press the CONTROL & SELECT encoder a second time to access playlist information. The display shows the position of the playing track and the total number of tracks in the playlist.

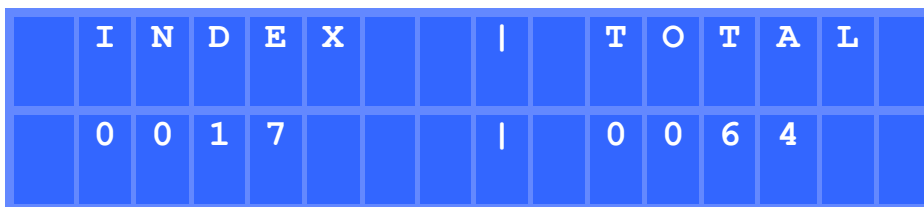


Figure 4: playlist information

7.3.2. Playing files stored on MICRO SD memory cards

Insert a MICRO SD/MICRO SDHC card containing audio files in the slot. Then press the MENU key to access the main menu. In the SOURCE submenu, select the MMC source using the CONTROL & SELECT digital encoder to navigate through the different parameters and press the encoder to confirm (SELECT). The selected parameter will flash until your selection is confirmed. Press ▶ in the transport bar to start playing content.

If no media is found or the media cannot be read, the display will show the message: MMC UNAVAILABLE (flashing). If this occurs, please check that the media is properly inserted and that it meets the specifications.



Figure 5: PLAYER ONE playing a file from MICRO SD/MICRO SDHC card

7.4. Audio streaming playback

The PLAYER ONE allows audio streaming playback, from its Ethernet or Wi-Fi interface.

It supports DLNA and AirPlay, so you can play files sent from your smartphone, tablet or PC via a wireless connection. It also plays Internet streaming services such as online radios or files from a server. A stable Internet connection is required.

7.4.1. Audio streaming playback via AirPlay

Point-to-point audio content can be sent via AirPlay by connecting your device to the PLAYER ONE Wi-Fi interface or via a home Wi-Fi network. AirPlay also works with a wired Ethernet connection. Refer to the [PLAYER ONE & PLAYER ZERO web GUI application manual](#) for information on the different ways to connect to a LAN.

First, make sure that your device and PLAYER ONE are on the same local network or are point-to-point connected. Then press the MENU key to access the main menu. In the SOURCE submenu, select the AIRPLAY source using the CONTROL & SELECT digital encoder to navigate through the different parameters and press the encoder to confirm (SELECT). The selected parameter will flash until your selection is confirmed. The AIRPLAY MODE message flashes on the display. The PLAYER ONE is now ready to receive AirPlay streams.

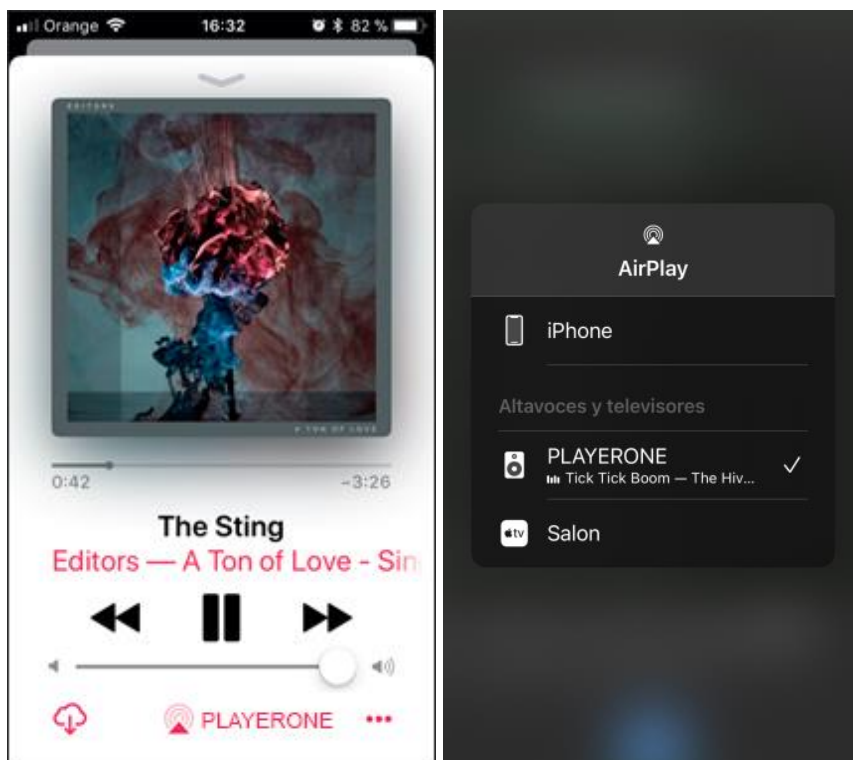


Figure 6: AirPlay streaming from iOS© device

7.4.2. Audio streaming playback via DLNA

Point-to-point audio content can be sent via DLNA, connecting your device to the PLAYER ONE Wi-Fi interface or via a home Wi-Fi network. DLNA is not available via wired Ethernet connection. Refer to the [PLAYER ONE & PLAYER ZERO web GUI application manual](#) for information on the different ways to connect to a LAN.

First, make sure that your device and PLAYER ONE are on the same local network. Then press the MENU key to access the main menu. In the SOURCE submenu, select the DLNA source using the CONTROL & SELECT digital encoder to navigate through the different parameters and press the encoder to confirm (SELECT). The selected parameter will flash until your selection is confirmed. The DLNA MODE message flashes on the display. The PLAYER ONE is now ready to receive DLNA streams.

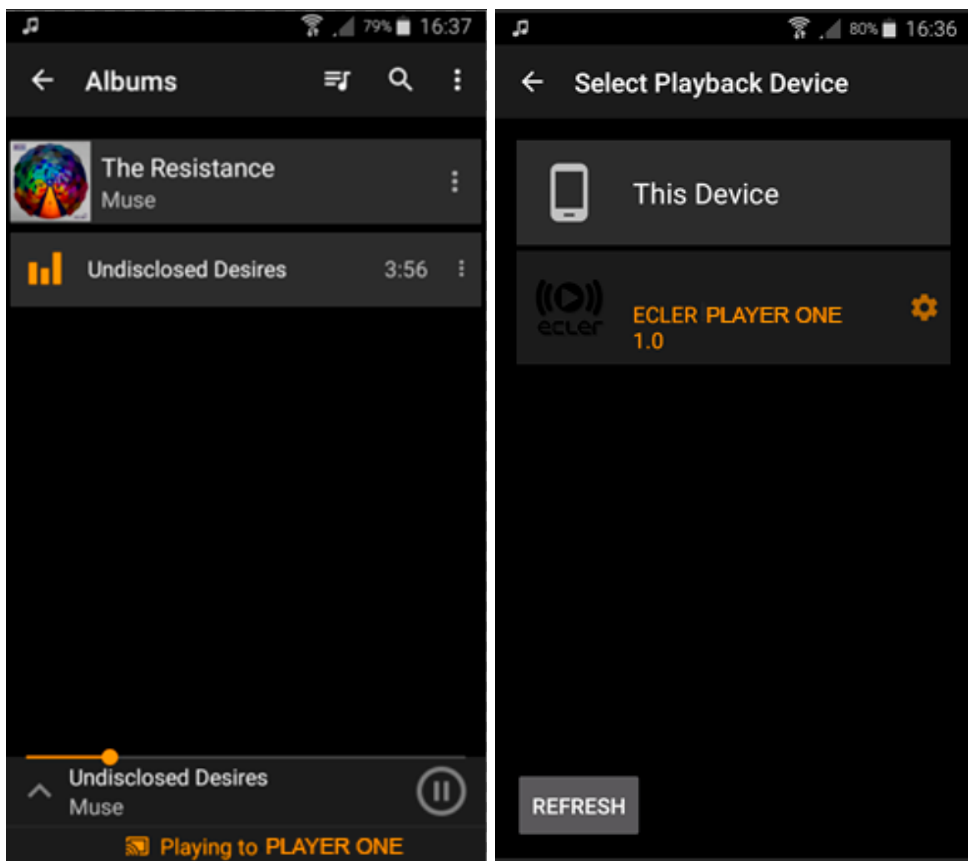


Figure 7: Android© device connected to an PLAYER ONE for streaming via DLNA

7.4.3. Listening to an Internet radio station

Connect your PLAYER ONE to the Internet. You can use the Ethernet port or the Wi-Fi interface. Refer to the [PLAYER ONE & PLAYER ZERO web GUI application manual](#) for information about connecting to the Internet.

PLAYER ONE includes an Internet radio service that allows you to discover, listen and store in a very simple way different audio content such as music, news, sports, podcasts and Internet radios, among more than 120,000 radio stations worldwide.

Press the MENU key to access the main menu. In the SOURCE submenu, select the INTERNET RADIO source using the CONTROL & SELECT digital encoder to navigate through the different parameters and press the encoder to confirm (SELECT).

Note: INTERNET RADIO is at the top of the list, so turn the encoder counter-clockwise.

Turn the rotary encoder to navigate through the different menus, press the encoder to select a menu, and press the ESC key to return to the previous menu.



Figure 8: Internet radio service navigation menu

If you have already selected an Internet radio, press the MENU button again to recall the last selection. Press the MENU key again to return to the beginning.

Press and hold the rotary encoder on an Internet radio for 2 seconds to preset this radio station. Turn the encoder to navigate between the different presets available and press it to store the radio station.



Figure 9: saving a preset

If the preset is empty, you must confirm by pressing the encoder. If you do not want to store in the selected preset, you can return to the previous menu and select another preset by pressing the ESC key.

If you want to overwrite a preset, you must confirm by pressing the encoder. If you do not want to store in the selected preset, you can return to the previous menu and select another preset by pressing the ESC key.

You can store an Internet radio in a preset without listening it.

Once an Internet radio has been stored in a preset, it is available in the SOURCE submenu as an audio source, at the position corresponding to the preset number.

7.4.4. Audio streaming playback over the Internet

Connect your PLAYER ONE to the Internet. You can use the Ethernet port or the Wi-Fi interface. Refer to the [PLAYER ONE & PLAYER ZERO web GUI application manual](#) for information about connecting to the Internet.

Press the MENU key to access the main menu. In the SOURCE submenu, select your playlist as the source, whether it is a preset Internet radio or a previously created playlist pointing to streaming content (see the [PLAYER ONE & PLAYER ZERO web GUI application manual](#) to learn how to set up a playlist), by turning the CONTROL & SELECT digital encoder to navigate through the different parameters and pressing the encoder to confirm (SELECT). The selected parameter will flash until your selection is confirmed. Press ▶ in the transport bar to start playing content.

If playlist playback does not start, please check your Internet connection and/or the network settings of your device.

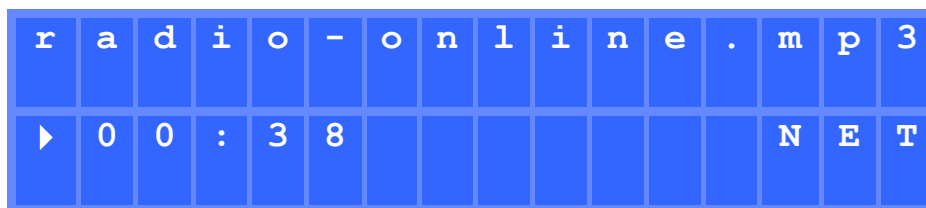


Figure 10: PLAYER ONE playing an Internet stream

7.5. Configuration Menu

The configuration menu allows you to set network parameters, date and time, the audio output mode (mono/stereo) and view relevant device information.

The configuration menu is accessed by holding down the MENU key for a few seconds. Menu navigation and parameter setting are the same as in the main menu (see chapter 7.2).

The configuration menu consists of the following items:

- CHANNELS: to set the output to stereo or mono.
- WIFI: to configure the Wi-Fi interface.
 - OFF: disables the Wi-Fi interface.
 - ON: enables the Wi-Fi interface. Press the CONTROL & SELECT encoder to display the IP address assigned to the device. In MASTER mode this IP will be 192.168.189.1 (refer to the [PLAYER ONE & PLAYER ZERO web GUI application manual](#) for details).
 - RESTORE DEFAULTS: resets the default Wi-Fi configuration parameters.
- ETHERNET: to set the Ethernet interface to DHCP or static (dynamic or static addressing). Turn the CONTROL & SELECT encoder to select one of the two options:
 - DHCP: press the CONTROL & SELECT encoder to display the IP address assigned to the device (DHCP).
 - STATIC: if you have selected static addressing, you can edit the network parameters from the front panel by pressing the CONTROL & SELECT encoder to access the IP submenu. If you want to change the IP address, turn the encoder. To select the next parameter (byte), press the NEXT key.
Each time you press the encoder, you can navigate through the different network parameters: IP, MASK, GATEWAY, DNS1, DNS2 and APPLY+REBOOT. The latter option is available only if you have made changes to any of the network parameters.
To confirm changes to network parameters, select YES in the APPLY+REBOOT submenu. The device will restart with the new network settings.
- DATE: displays date in YEAR/MONTH/DAY format
- TIME: displays time in HH:MM format
- GALLERY: under construction.

- VERSION: displays the current firmware version of the device.

7.6. Lock Menu

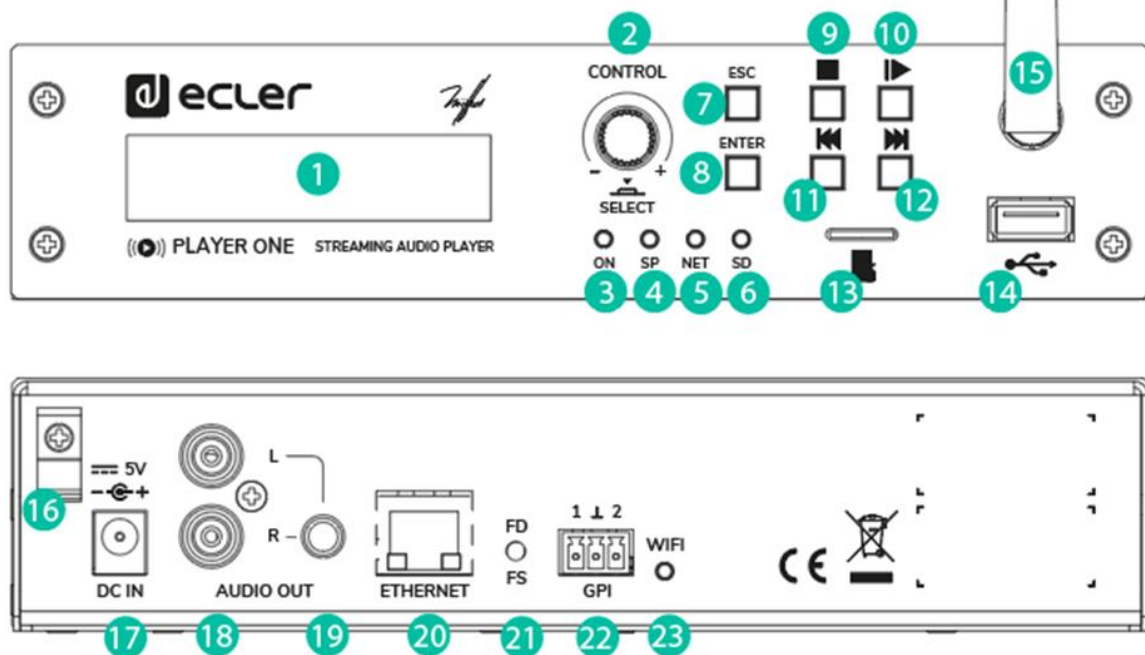
To access the lock menu, press and hold the ESC key for approximately 10 seconds. In the LOCK MODE menu, the following options appear (same navigation as in all other menus):

- UNLOCK ALL: unlocks all front panel keys.
- UNLOCK USER: locks access to the device configuration menu (administrator functions) but allows you to use all other features. A submenu appears in which you must enter the password that protects access to the device's configuration functions. Turn the CONTROL & SELECT digital encoder to select the desired digit. Press the NEXT key to advance to the next digit. To confirm the password, press the CONTROL & SELECT digital encoder.
The next time you try to access the lock menu, you will be prompted for the password to unlock the administrator functions. After a while without pressing any key, and as a precaution, the configuration menu will be locked again. It will be necessary to return to the lock menu and select UNLOCK ALL to prevent the unit from locking the configuration menu after a few seconds of user inactivity.
- LOCK ALL: locks all front panel keys. To unlock them, proceed in the same way as to unlock the configuration menu (UNLOCK ALL).

8. PLAYER ONE FUNCTION LIST

1. LCD display
2. CONTROL & SELECT digital encoder
3. ON LED power indicator
4. SP LED signal present indicator
5. NET LED network traffic indicator
6. SD LED Micro SD source operation indicator
7. ESC key
8. ENTER key
9. STOP key
10. PLAY/PAUSE key
11. PREV key
12. NEXT key
13. MICRO SD slot
14. USB port
15. WiFi Antenna
16. Security flange for power supply cable
17. External power supply connector
18. 2 x RCA stereo output
19. Stereo mini-jack output
20. RJ -45 connector
21. Factory Default / File Safe button
22. GPI Port
23. Indicator Light, WIFI

9. PLAYER ONE FUNCTION DIAGRAM



10. TECHNICAL SPECIFICATIONS

| | | |
|----------------------------|------------------------|---|
| DIGITAL ENGINE | | |
| | Processor | MIPS Single Core 64bits 580MHz |
| AUDIO CONVERTERS | | |
| | Sampling rate | 48kHz |
| | Resolution | 16bit |
| | Bit rate | 32~320kbps |
| | Frequency response | 5Hz - 24kHz (-3dB) |
| MEDIA PLAYER | | |
| | Audio sources | Local storage (USB & microSD), Internet radio, AirPlay, DLNA |
| | Dynamic range | From -80 dB to 0 dB |
| | THD + Noise | < 0.008% (1kHz, 1Vrms) |
| ANALOGUE AUDIO OUTPUTS | | |
| | Number of outputs | 2 x Stereo output (unbalanced) |
| | Connection type | RCA estéreo, minijack 3,5mm |
| | Max output level | 6dBV / 5k ohm |
| | Output impedance | 460 ohm |
| | Dynamic range | TBC |
| | Crosstalk | TBC |
| CONNECTIVITY | | |
| | Ethernet | RJ 45 10/100Mbps |
| | Wi-Fi | 2.4GHz Wi-Fi, 802.11 b/g/n |
| | Wi-Fi antenna | Front panel |
| | Programing and control | Web Application, RePLAYER & Gallery. Third party integration: J SON |
| REMOTE CONTROL CONNECTIONS | | |
| | GPIOs | 2 ports, Dry contact to ground, 3 pin Terminal block |
| REAL-TIME CLOCK | | |
| | Retention time | 240 hours aprox. |
| | Accuracy | ±1 minute / month |
| MONITORING AND CONTROL | | |
| | Display | LCD Alphanumeric 2x16 cells |
| | LED indicators | Front panel: NET, SP, SD, Power Rear panel: Wifi |
| | Buttons | Front panel: Encoder, Enter, Esc, Play/pause, Next, Prev, Stop Rear panel: Factory Defaults / Failse Safe (pin-hole) |
| LOCAL STORAGE | | |
| | Micro SD | Front panel micro SD slot Supports micro SD SDXC |
| | USB | Front panel USB female connector Support USB 2.0 High Speed (480 Mbps) |
| | Capacity | Up to 2TB |
| | File system | Supports FAT16, FAT 32, VFAT and NTFS (read-only) Multi-partition up to 1 |
| | Playable audio files | mp3, ogg, WAV, FLAC, AIFF, m3u, pls |

| | |
|-----------------------|---|
| Files analysis | 65354 playable folders 65354 playable folders within each folder 65354 playable files within each folder |
| Folder hierarchy | Up to 8 containing the root directory |
| Sorting | UNICODE Up to 100 folders, 100 files by folder (Folders/files over 100 sorted in the FAT order) |
| ELECTRICAL | |
| Power supply | External, universal, 5VDC (included) |
| AC mains requirement | 90-264VCA 50-60Hz |
| AC mains connector | International AC plugs set |
| Power consumption | 6 VA / 3 W |
| Ventilation | Passive |
| PHYSICAL | |
| Operating temperature | Min 0°C, +32°F Max +35°C, +95°F |
| Operating humidity | < 85% HR |
| Storage temperature | Min -10°C, +14°F Max +50°C, +122°F |
| Storage humidity | < 90% HR |
| Installation options | Desktop, rack (1/2 of 1UR) |
| Included accessories | AD/DC Power Supply, WiFi antenna, adhesive rubber feet, rack tray screws , GPI connector, warranty card and standard user guide |
| Optional accessories | 1UHRMKIT |
| Dimensions | 198.5 x 44 x 132 mm / 7.81" x 1.73" x 5.19" |
| Weight | 0.8 Kg / 1.76 lb |
| Shipping dimensions | 450 x 220 x 60 mm / 17.71" x 8.66" x 2.36" |
| Shipping weight | 1 Kg / 2.20 lb |
| CERTIFICATIONS | |
| CB Report | Pending approval |
| EMC | Pending approval |
| FCC | Pending approval |

All product characteristics are subject to variation due to production tolerances. **NEEC AUDIO BARCELONA S.L.** reserves the right to make changes or improvements in the design or manufacturing that may affect these product specifications.

Motors, 166-168 08038 Barcelona - Spain - (+34) 932238403 | information@ecler.com | www.ecler.com