



KRAMER ELECTRONICS LTD.

USER MANUAL

MODEL:

KDS-MP1

Digital Media Player

P/N: 2900-300131 Rev 2

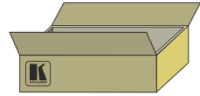


KDS-MP1 Quick Start Guide

This guide helps you install and use your product for the first time. For more detailed information, go to http://www.kramerelectronics.com/support/product_downloads.asp to download the latest manual or scan the QR code on the left.

Step 1: Check what's in the box

- | | |
|---|---|
| <input checked="" type="checkbox"/> The KDS-MP1 Digital Media Player | <input checked="" type="checkbox"/> 4 Rubber feet |
| <input checked="" type="checkbox"/> Ethernet Cable | <input checked="" type="checkbox"/> 1 power adapter |
| <input checked="" type="checkbox"/> 3.5mm to RCA A/V cable | <input checked="" type="checkbox"/> 1 quick start guide |



Save the original box and packaging materials in case you need to return your product for service.

Step 2: Install the KDS-MP1

Mount the machine in a rack, place on a table or attach to VESA MIS-D 100 mounting points.

Step 3: Configure the KDS-MP1

Connect an output, connect a USB keyboard, turn the power on and configure the **KDS-MP1**.

Step 4: Prepare and export content

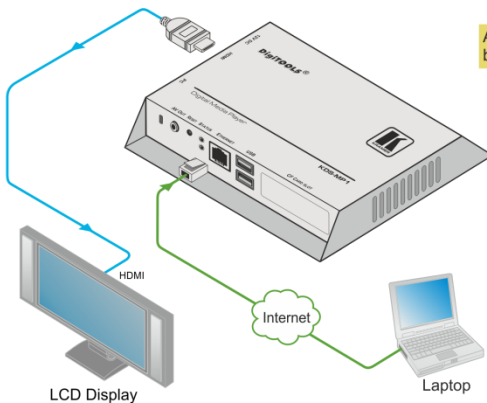
Use **KDS-MP1** Manager to prepare the playlist.

Connect your PC to the network and export the playlist

or

Connect a USB memory stick to your PC, download the playlist and then connect the USB memory stick to the **KDS-MP1** and wait until content is downloaded automatically.

Step 5: Connect and Operate the KDS-MP1



Always switch OFF the power on each device before connecting it to your **KDS-MP1**.

Contents

1	Introduction	1
2	Getting Started	2
2.1	Achieving the Best Performance	2
2.2	Safety Instructions	2
2.3	Recycling Kramer Products	3
3	Overview	4
3.1	Defining the KDS-MP1 Digital Media Player	6
3.2	About KDS-MP1 Setup	7
4	Connecting the KDS-MP1	8
5	Configuring the KDS-MP1	10
5.1	Accessing the Menu	10
5.2	The Main Menu	11
5.3	Set the Resolution	12
5.4	Setting the Time Zone	12
6	KDS-MP1 Manager Installation	15
6.1	Setup Process	15
7	KDS-MP1 Manager Operation	17
7.1	Schedule Modes	18
7.2	Export the Schedule	32
7.3	The Menu	40
8	Firmware Update	41
8.1	Firmware Update via Network	42
8.2	Firmware Update via USB	43
9	Technical Specifications	46

Figures

Figure 1: KDS-MP1 Digital Media Player	6
Figure 2: Connecting the KDS-MP1 Digital Media Player	9
Figure 3: Connecting the KDS-MP1 Digital Media Player for Configuration	9
Figure 4: The Configuration Main Menu	11
Figure 5: The KDS-MP1 Manager Setup Wizard	16
Figure 6: The KDS-MP1 Manager Welcome Window	17
Figure 7: Selecting the Schedule Mode	18
Figure 8: KDS-MP1 Player Looping Mode	19
Figure 9: The Looping Schedule	20
Figure 10: Looping Playlist Timeline	26
Figure 11: Setting the Weekly Schedule	27
Figure 12: Proceeding to Export	32
Figure 13: The Export Window	32
Figure 14: Searching for the IP Number	33
Figure 15: Manually Entering the IP Number	34
Figure 16: The media player list	34
Figure 17: Files Exported to the Media Player	35
Figure 18: Completion of Export	36
Figure 19: Export Log	36
Figure 20: Locate USB Memory Stick	37
Figure 21: USB Content Warning	38
Figure 22: Copying Content to the USB Stick	38
Figure 23: Exporting via USB memory stick	39
Figure 24: The Menu	40
Figure 25: Click Firmware Update	41
Figure 26: Firmware Update Window (via Network)	42
Figure 27: Firmware Update Window (via USB)	43
Figure 28: Select Firmware	44
Figure 29: Copying Firmware File to USB Firmware	44

1 Introduction

Welcome to Kramer Electronics! Since 1981, Kramer Electronics has been providing a world of unique, creative, and affordable solutions to the vast range of problems that confront the video, audio, presentation, and broadcasting professional on a daily basis. In recent years, we have redesigned and upgraded most of our line, making the best even better!

Our 1,000-plus different models now appear in 11 groups that are clearly defined by function: GROUP 1: Distribution Amplifiers; GROUP 2: Switchers and Matrix Switchers; GROUP 3: Control Systems; GROUP 4: Format/Standards Converters; GROUP 5: Range Extenders and Repeaters; GROUP 6: Specialty AV Products; GROUP 7: Scan Converters and Scalers; GROUP 8: Cables and Connectors; GROUP 9: Room Connectivity; GROUP 10: Accessories and Rack Adapters and GROUP 11: Sierra Products.

Congratulations on purchasing your Kramer **KDS-MP1** *Digital Media Player*. This product, which incorporates HDMI™ technology, is ideal for digital signage.

2 Getting Started

We recommend that you:

- Unpack the equipment carefully and save the original box and packaging materials for possible future shipment
- Review the contents of this user manual



Go to http://www.kramerelectronics.com/support/product_downloads.asp to check for up-to-date user manuals, application programs, and to check if firmware upgrades are available (where appropriate).

2.1 Achieving the Best Performance

To achieve the best performance:

- Use only good quality connection cables (we recommend Kramer high-performance, high-resolution cables) to avoid interference, deterioration in signal quality due to poor matching, and elevated noise levels (often associated with low quality cables)
- Do not secure the cables in tight bundles or roll the slack into tight coils
- Avoid interference from neighboring electrical appliances that may adversely influence signal quality
- Position your Kramer **KDS-MP1** away from moisture, excessive sunlight and dust



This equipment is to be used only inside a building. It may only be connected to other equipment that is installed inside a building.

2.2 Safety Instructions



Caution: There are no operator serviceable parts inside the unit

Warning: Use only the Kramer Electronics input power wall adapter that is provided with the unit

Warning: Disconnect the power and unplug the unit from the wall before installing

2.3 Recycling Kramer Products

The Waste Electrical and Electronic Equipment (WEEE) Directive 2002/96/EC aims to reduce the amount of WEEE sent for disposal to landfill or incineration by requiring it to be collected and recycled. To comply with the WEEE Directive, Kramer Electronics has made arrangements with the European Advanced Recycling Network (EARN) and will cover any costs of treatment, recycling and recovery of waste Kramer Electronics branded equipment on arrival at the EARN facility. For details of Kramer's recycling arrangements in your particular country go to our recycling pages at <http://www.kramerelectronics.com/support/recycling/>.

3 Overview

The **KDS-MP1** is a high quality LAN-based digital signage media player. The **KDS-MP1** receives content streamed from the Network, saved in its internal memory or from an external USB memory stick and shows it with up to 1080p HD image quality on a display (via HDMI, VGA or AV 3.5mm outputs).

The **KDS-MP1** *Digital Media Player* features:

- 1080p full HD support
- High quality video and audio output via the HDMI output connector
- MPEG-1, MPEG-2, MPEG L2, MP3, H.264/MPEG-4, and VC-1 codec format support
- 4GB internal built-in memory which can be replaced by an external memory of up to 16GB
- NTP client for time synchronization
- CMS device management in LAN environments using the integrated SMIL control
- SMIL 3.0 instructions (sub-set) support
- A perforated side panel for efficient heat dissipation

The Kramer DigiTOOLS® **KDS-MP1** is enclosed in a VESA standard mounting bracket and can be mounted on-wall, inside a cabinet or to the VESA standard screw holes on the rear panel of a display.

The **KDS-MP1** comes with **KDS-MP1 Manager** software which is an easy and simple way to manage digital signage content via a PC (See [Section 6](#)).

KDS-MP1 Manager:

- Lets you create or modify content playback schedules
- Introduces seven Smart Widgets that allow players that support HTML5 to schedule dynamic contents
- Lets you publish multiple PowerPoint slides directly to the Player (2003/2007/2010, static only)
- Supports Video Input sequence in playlist scheduling
- Supports full screen portrait mode (auto rotates content)
- Supports Looping or Weekly schedule
- Schedules energy saving video display on/off
- Auto detects IP, MAC address, and models
- Supports easy setup for multi-zone layout
- Features multi-zone (split-screen) scheduling
- Features minute-accurate time slot scheduling
- Features firmware upgrade
- Features image fit, crop, and stretch options

3.1 Defining the KDS-MP1 Digital Media Player

This section defines the **KDS-MP1**.

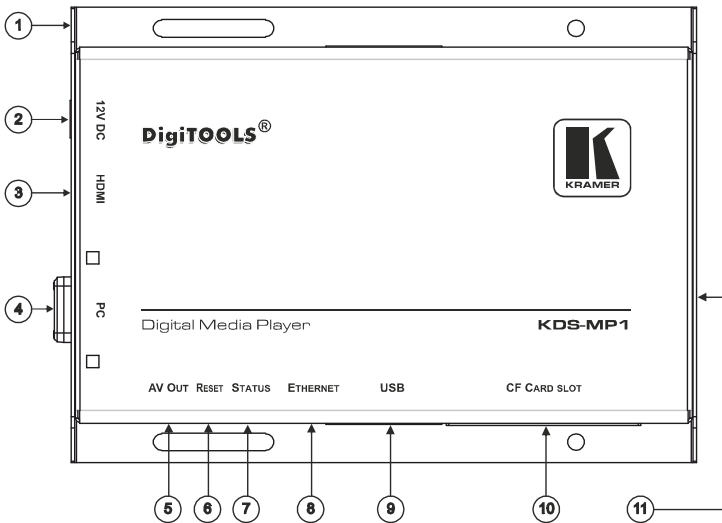


Figure 1: KDS-MP1 Digital Media Player

#	Feature	Function
1	VESA Mounting Bracket	Connect to the rear panel screw-holes of a VESA standard display
2	12V DC Connector	Connect to the power adapter
3	HDMI Connector	Connect to an HDMI acceptor (for video) Can also connect to a DVI source via a DVI adapter
4	PC Connector	Connect to a VGA display (for computer graphics)
5	AV OUT 3.5mm Mini Jack	Connect to an analog A/V acceptor
6	RESET Button	Push in the RESET button with a thin screwdriver to reset the machine (see Section 5.1.1)
7	STATUS LEDs	Lights green when the unit is powered Lights yellow when passing data. Also used to indicate factory reset (see Section 5.1.1)
8	ETHERNET RJ-45 connector	Connect to the Ethernet via CAT 5 cable
9	USB Connector (2)	Connect to a true USB keyboard for configuring the system Connect to a USB memory stick
10	CF CARD SLOT	Remove the cover to insert an external compact flash memory card and replace the internal 4GB memory (up to 16GB)
11	Perforated side panel	To prevent overheating

3.2 About KDS-MP1 Setup

To prepare the **KDS-MP1** for operation, you need to:

- **Connect the machine**, see [Section 4](#)
Connect the **KDS-MP1** to play media; connect a USB keyboard to configure the **KDS-MP1**
- **Configure the machine**, see [Section 5](#)
Before using the **KDS-MP1** you have to configure it. When powering the unit, the machine boots up to the configuration mode if it does not recognize content for playback.
At any point, configuration is possible when connecting a USB keyboard
- **Prepare the content and export**, see [Section 7](#)
Use the **KDS-MP1 Manager** to prepare the content to playback

4 Connecting the KDS-MP1



Always switch off the power to each device before connecting it to your **KDS-MP1**. After connecting your **KDS-MP1**, connect its power and then switch on the power to each device.

To connect the KDS-MP1, as illustrated in the example in [Figure 2](#), do the following:

1. Connect the acceptor to one of the following outputs. The:
 - HDMI connector to an HDMI acceptor (for example, an LCD display)
 - VGA 15-pin HD connector to a VGA acceptor (for example, a VGA display)
 - A/V 3.5mm mini jack to an analog A/V acceptor (for example, a composite video display with audio)
2. Connect the Ethernet RJ-45 connector to the Network via CAT 5 cable.
3. If required, connect a USB memory stick to the USB connector (see [Sections 7.2.2](#) and [8](#)).
4. Connect the power adapter to the 12V DC socket on the **KDS-MP1** and to the mains electricity (not shown in [Figure 2](#)).

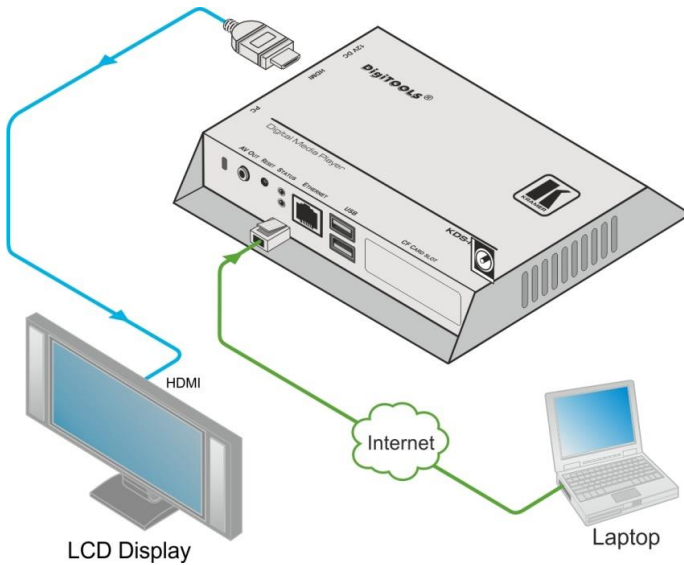


Figure 2: Connecting the KDS-MP1 Digital Media Player



If you need to configure the system (see [Section 5](#)), connect a USB keyboard to one of the USB connectors (see [Figure 3](#)).

The **KDS-MP1** will identify only a true USB keyboard. A keyboard that is connected via a PS/2 to USB adapter will not be identified.

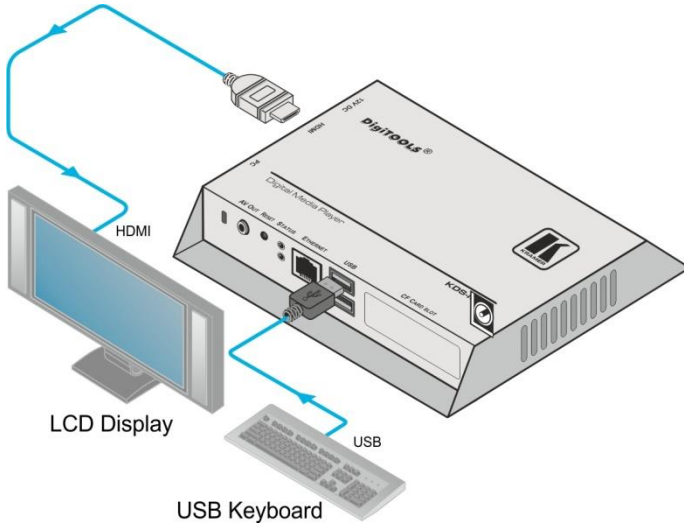


Figure 3: Connecting the KDS-MP1 Digital Media Player for Configuration

5 Configuring the KDS-MP1

After connecting the power, the system will start a booting process and upon its completion (after about 90 seconds), the **KDS-MP1** will begin playback if the media content has already been uploaded or if you are using the USB memory stick as the source. If not, the menu system will open to let you configure the system.



Whenever you connect the USB keyboard, the setup menu appears within 30 seconds.

5.1 Accessing the Menu

To access the menu, connect the USB keyboard to one of the two USB connectors. The main MENU screen appears.

- Press the arrow keys to select the desired sub-menu/menu item, and then press ENTER
- Use the numeral keys to change names and values
- Press the space bar to move the star (for sub-menu selections)
- Press ENTER to confirm or cancel a change in the menu

5.1.1 Resetting the KDS-MP1

If you do not remember the password (see [Section 5.2](#)) or cannot enter the configuration menu for any other reason, you can reset the **KDS-MP1** via the RESET button on the machine panel.

To reset the **KDS-MP1**:

1. Disconnect the power.
2. Press and hold the RESET button using a thin screwdriver (or any other small object).
3. Reconnect the power adapter.
Wait for the yellow LED to light (within 10 seconds)
4. Release the RESET button.
The system reboots (see [Section 5](#))

5.2 The Main Menu

This section describes the configuration main menu.



Figure 4: The Configuration Main Menu

Feature	Function
Device information	Shows the device information: Model , Device ID , Firmware version , Ethernet IP and the Current Time . Press the ENTER button (<OK>)
Video Setting	Shows the current resolution. Click <Change> using the ENTER button to set to a different resolution (see Section 5.3)
Content source	Server URL: Type the URL for the media content source from which the content will be uploaded On the next start up, the KDS-MP1 will upload the media content from this URL If a USB memory stick is connected, there is no need to define the server URL Player name: change the default name to identify the player in the network The default name is an alpha-numeric name. You can change it to a more convenient name
Network setting	IP configuration: obtain the IP configuration either automatically (DHCP) or manually (Static IP) by defining the IP number, Netmask, Gateway, Domain and DNS Proxy setting: set the Proxy type (for example, HTTP) and Proxy server (define Host, Port, User and Password)
Time setting	Local time: set the date and then the local time Time zone: set the relevant time zone from a list Time server: select either www.google.com, the Content source or Custom
System maintenance	Load factory default: select to return to factory default definitions Update firmware: select to update the firmware Drivers Scheduled reboot: set to reboot the system regularly

Feature	Function
	Remote assistance: enabled/disabled Install license
Security	Change password: to allow access to authorized people only. Once the password is set, you can access the menu by pressing Alt + Ctrl + Del To enter the menu without using the password, you have to reset the unit (see Section 5.1.1)
Undo changes	Reset to previous settings

5.3 Set the Resolution

For best results, set the resolution so it matches the display's native resolution. For example, an LCD display would have a native resolution of 720p and an AV out display would probably require composite NTSC.



Set the resolution to “Auto Detect” to automatically match the resolution to that of the display's native resolution.

KDS-MP1 supports the following resolutions:

Auto Detect	HD 720p60 (1280x720@60Hz)
VGA (640x480@60Hz)	HD 1080i50 (1920x1080i@50Hz)
SVGA (700x600@60Hz)	HD 1080i60 (1920x1080i@60Hz)
XGA (1024x768@60Hz)	Full HD 1080p50 (1920x1080@50Hz)
SXGA (1280x1024@60Hz)	Full HD 1080p60 (1920x1080@60Hz)
UXGA (1600x1200@60Hz)	Composite: NTSC
WXGA (1360x768@60Hz)	Composite: NTSC-J (Japan)
WXGA (1366x768@60Hz)	Composite: PAL
WSXGA (1440x900@60Hz)	Composite: PAL-M (Brazil)
WSXGA+ (1680x1050@60Hz)	Composite: PAL-M (Paraguay and Uruguay))
WUXGA (1920x1200@60Hz)	Composite: PAL-Mc (Argentina)
HD 720p50 (1280x720@50Hz)	

5.4 Setting the Time Zone

You can select one of the following time zones:

(GMT - 11:00) Midway Islands, Samoa
(GMT - 10:00) Hawaii
(GMT - 09:00) Alaska
(GMT - 08:00) Pacific (Mexico)
(GMT - 08:00) Pacific (US and Canada)
(GMT - 07:00) Mountain
(GMT - 07:00) Arizona

(GMT - 07:00) Mexico (Chihuahua, La Paz, Mazatlan St)
(GMT - 06:00) Central America
(GMT - 06:00) Central US and Canada
(GMT - 06:00) Mexico (Mexico City, Monterrey, Guadalajara)
(GMT - 06:00) Saskatchewan
(GMT - 05:00) Eastern Indiana
(GMT - 05:00) Eastern US and Canada
(GMT - 05:00) Lima, Bogota, Quito, Rio Branco
(GMT - 04:00) Atlantic
(GMT - 04:00) Bolivia (La Paz), Santo Domingo
(GMT - 04:00) Chile (Santiago)
(GMT - 04:00) Canada (Newfoundland)
(GMT - 03:00) Brazil East
(GMT - 03:00) Argentina (Buenos Aires)
(GMT - 03:00) Greenland
(GMT - 02:00) Mid-Atlantic
(GMT - 01:00) Azores
(GMT + 00:00) Africa West
(GMT + 00:00) Universal Coordinated Time
(GMT + 00:00) Western European
(GMT + 01:00) Africa Central West
(GMT + 01:00) Central European
(GMT + 01:00) Namibia
(GMT + 02:00) Africa Central East
(GMT + 02:00) Eastern European (Greece, Lebanon, Romania, Turkey)
(GMT + 02:00) Egypt
(GMT + 02:00) Israel
(GMT + 02:00) Russia Zone 01 (Kaliningrad)
(GMT + 02:00) Syria
(GMT + 03:00) Africa East
(GMT + 03:00) Iraq
(GMT + 03:00) Russia Zone 02 (Moscow, St. Petersburg, Arkhangelsk)
(GMT + 03:30) Iran
(GMT + 04:00) Oman (Muscat), United Arab Emirates
(GMT + 04:00) Indian Ocean West (Reunion, Mauritius)
(GMT + 04:00) Russia Zone 03 (Samara, Izhevsk)
(GMT + 04:30) Afghanistan
(GMT + 05:00) Turkmenistan (Ashkhabad), Tajikistan (Dushanbe)
(GMT + 05:00) Indian Ocean East (Maldives, British Indian Ocean Territory)
(GMT + 05:00) Pakistan
(GMT + 05:00) Russia Zone 04 (Yekaterinburg, Perm, Ufa)
(GMT + 05:30) India (Calcutta)
(GMT + 05:45) Nepal
(GMT + 06:00) Bangladesh
(GMT + 06:00) Russia Zone 05 (Novosibirsk, Omsk)

(GMT + 06:30) Cocos (Keeling) Islands
(GMT + 06:30) Myanmar
(GMT + 07:00) Cambodia, Western Indonesia, Laos, Thailand, Vietnam
(GMT + 07:00) Pacific Ocean (Christmas Island)
(GMT + 07:00) Russia Zone 06 (Krasnoyarsk, Kemerovo)
(GMT + 08:00) Taiwan
(GMT + 08:00) Hong Kong, Singapore, Philippines, Malaysia
(GMT + 08:00) Western Australia
(GMT + 08:00) China
(GMT + 08:00) Russia Zone 07 (Irkutsk, Ulan-Ude)
(GMT + 09:00) Eastern Indonesia
(GMT + 09:00) Japan
(GMT + 09:00) Korea
(GMT + 09:00) Palau
(GMT + 09:00) Russia Zone 08 (Yakutsk, Chita)
(GMT + 09:30) Australia North
(GMT + 09:30) Australia South
(GMT + 10:00) Australia East
(GMT + 10:00) Pacific Ocean (Papua, Guam)
(GMT + 10:00) Russia Zone 09 (Vladivostok, Khabarovsk)
(GMT + 11:00) Pacific Ocean UTC (Solomon Islands, Vanuatu)
(GMT + 11:00) Russia Zone 10 (Magadan, Kolyma)
(GMT + 11:30) Norfolk Islands
(GMT + 12:00) Kiribati Gilbert Islands
(GMT + 12:00) New Zealand
(GMT + 12:00) Pacific Ocean (Chuuk, Fiji, Nauru, Yap)
(GMT + 12:00) Russia Zone 11 (Petropavlovsk-Kamchatka, Anadyr)
(GMT + 12:45) Chatham Islands
(GMT + 13:00) Kiribati (Phoenix Islands - Enderbury)
(GMT + 13:00) Tonga
(GMT + 14:00) Kiribati Line Islands

6 KDS-MP1 Manager Installation

Insert the **KDS-MP1 Manager** software CD and the installer should pop up automatically. If it does not start, double-click on “setup.exe” located on your CD using Windows Explorer.

You can also download the latest version of **KDS-MP1 Manager** from <http://www.kramerelectronics.com>.

The **KDS-MP1** requires the following minimum system requirements (or higher):

- Microsoft Windows XP/Vista/Windows 7
- DirectX 9
- Microsoft .Net Framework version 3.51
- 1GHz AMD or Intel CPU
- 512MB of system memory
- 20GB hard drive space

The **KDS-MP1** also requires:

- PowerPoint 2003, 2007, or 2010 required for PowerPoint slideshow feature
If PowerPoint is not detected, a PowerPoint disabled icon appears on the **KDS-MP1 Manager** software main window. If you would like to use the slideshow feature, a trial edition of PowerPoint may be obtained free of charge from the Microsoft Office Web site
- Windows Media Player 10 or later required for video previews

6.1 Setup Process

To install the Control Software:

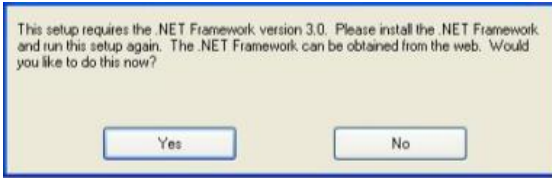
1. Double click the *Setup.exe* file.

The *Welcome* window appears:



If you haven't installed .NET Framework 3.51, you will be prompted to do so.

6.1.1 For Windows XP only: .Net Installation



Windows .NET Framework 3.51 is included on the CD and will be installed if absent from your system. Click Yes and follow the prompts to install it.

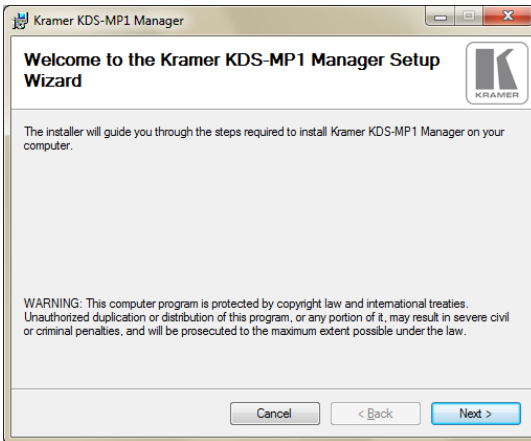


Figure 5: The KDS-MP1 Manager Setup Wizard

Run the installer and follow the step-by-step instructions. Close the installer to finish the installation.

7 KDS-MP1 Manager Operation

KDS-MP1 Manager lets you:

- Select a playlist which can include a video (downloaded from the PC), audio, widgets, a ticker or an image
Widget –small interactive application that provides functionality and content online. The content is refreshed without needing to make a new schedule
Ticker – mostly designed to display news headlines and RSS widgets
- Schedule the playlist/s to play continuously or to play a different playlist per day, per hour
- Add or remove playlist items
- Set the display aspect ratio
- Assign playlists to certain areas
- Export the material to the output
- Update the firmware



Note that each uploaded file should not exceed 2.5GB.

After launching the program, the Welcome window appears. Click Select model to choose the **KDS-MP1 Digital Media Player**.

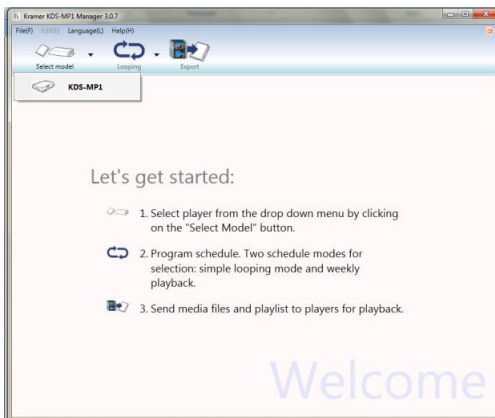


Figure 6: The KDS-MP1 Manager Welcome Window

7.1 Schedule Modes

Two schedule modes are available: the Looping mode which is the default (see [Figure 7](#)) or the Weekly schedule, which determine the appearance and settings of the **KDS-MP1** Manager. Selecting a different schedule mode will remove all the items from the current playlist.

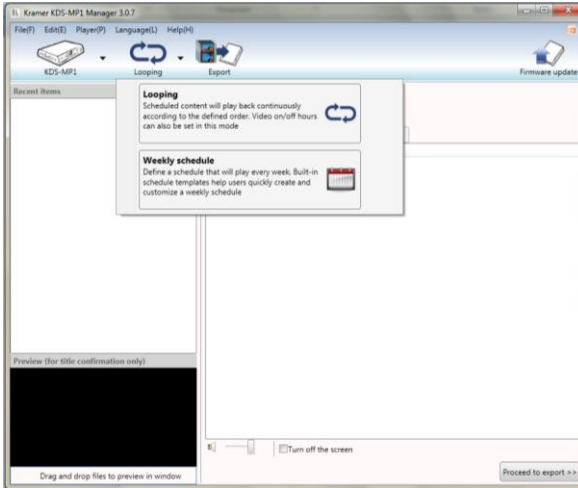


Figure 7: Selecting the Schedule Mode

Select one of the following schedules:

- Select looping for a single-playlist repeating playback (see [Section 7.1.1](#)). The playlist will repeat itself continuously or set On/Off for certain hours
- Select Weekly Schedule, for a multiple-playlist weekly playback (see [Section 7.1.2](#)). The weekly schedule lets you set a schedule per day per hour

7.1.1 The Looping Mode

After selecting the Looping mode, the following window appears (see [Figure 8](#)):

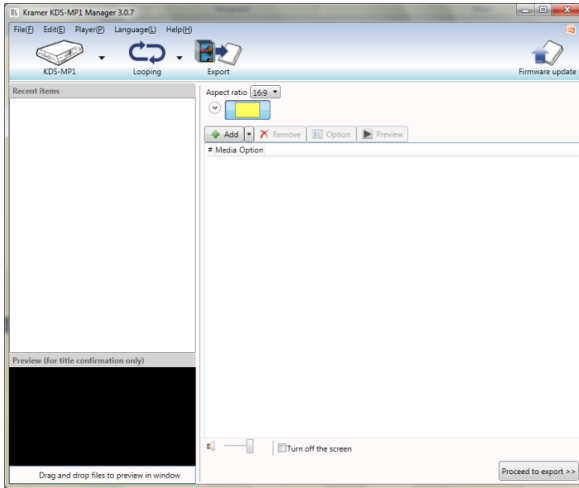


Figure 8: KDS-MP1 Player Looping Mode

The Looping window left side, Recent Items, lists recently uploaded files, and the preview window below lets you drag and drop selected files to preview in window.

The right side of the looping window, illustrated in [Figure 9](#), includes the tools required to let you create the desired playlist:

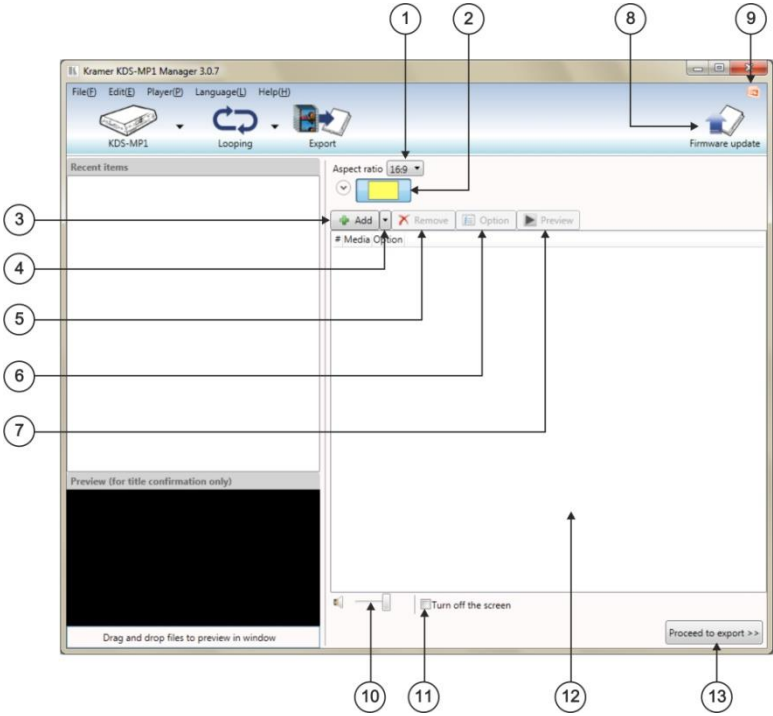
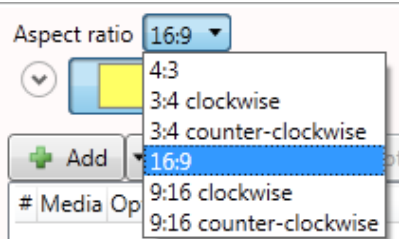
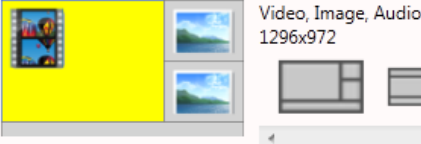
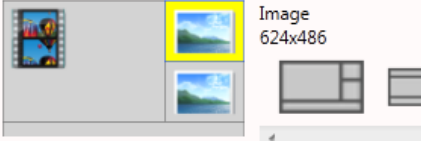
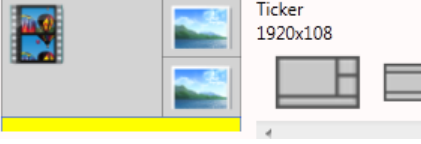

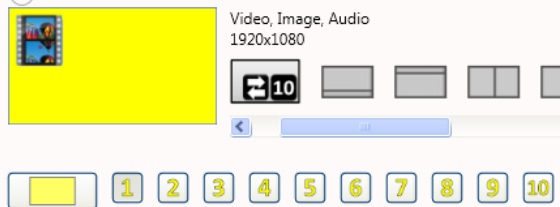

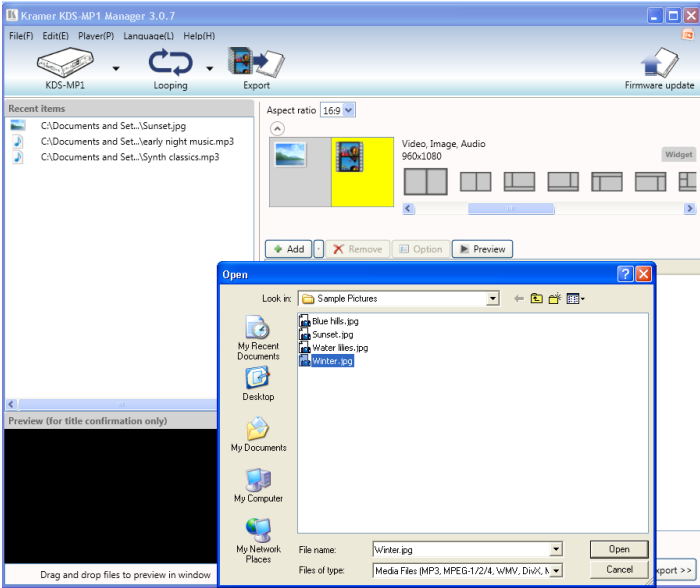
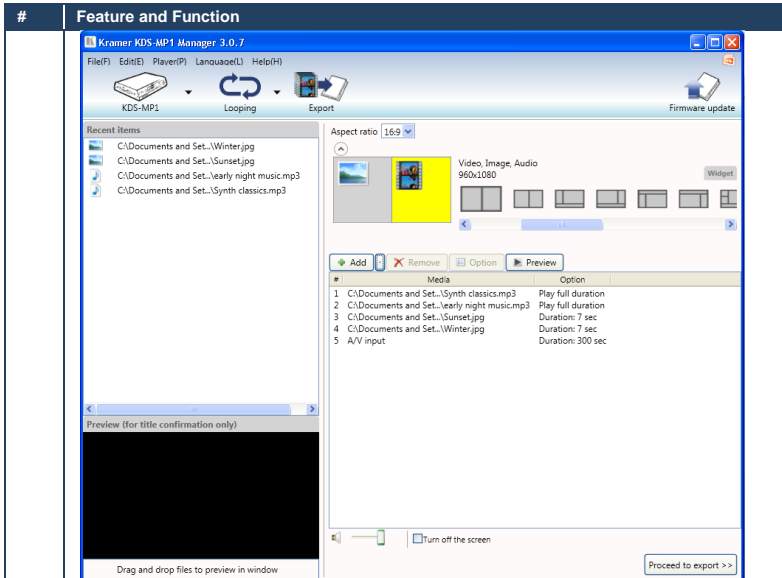


Figure 9: The Looping Schedule

#	Feature and Function
1	<p>Aspect Ratio Drop Down Box</p> <p>Set the aspect ratio to 4:3, 3:4 clockwise, 3:4 counter-clockwise, 16:9 (default), 9:16 clockwise or 6:19 counter-clockwise</p> <p>The display can also be set vertically clockwise or counter-clockwise</p> 

#	Feature and Function
2	<p data-bbox="288 156 600 177">Layout Editor Button (click to expand)</p> <p data-bbox="288 185 941 245">Select one of the available screen layouts. You can select one full window or various screen layouts that are divided into windows, each defined to present a different playlist. Other options let you present widgets and tickers.</p> <p data-bbox="288 252 680 272">The following are examples of different layouts:</p> <div data-bbox="297 280 717 424">  </div> <p data-bbox="288 432 981 494">This screen layout shows one large window, two smaller windows on the side and a ticker area below. The selected window is highlighted yellow, and on the side is a description of the A/V playlist options for this particular window and their size.</p> <p data-bbox="288 501 972 541">For example, when highlighting the top right window, the playlist description shows that this window's area is 624x486 pixels:</p> <div data-bbox="297 549 717 692">  </div> <p data-bbox="288 699 788 719">The ticker area, when highlighted, shows Ticker (1920x108):</p> <div data-bbox="297 727 717 871">  </div> <p data-bbox="288 877 941 917">When selecting a vertical aspect ratio, the layout editor will show vertical layout options, as in the example below:</p> <div data-bbox="297 925 855 1206">  </div>

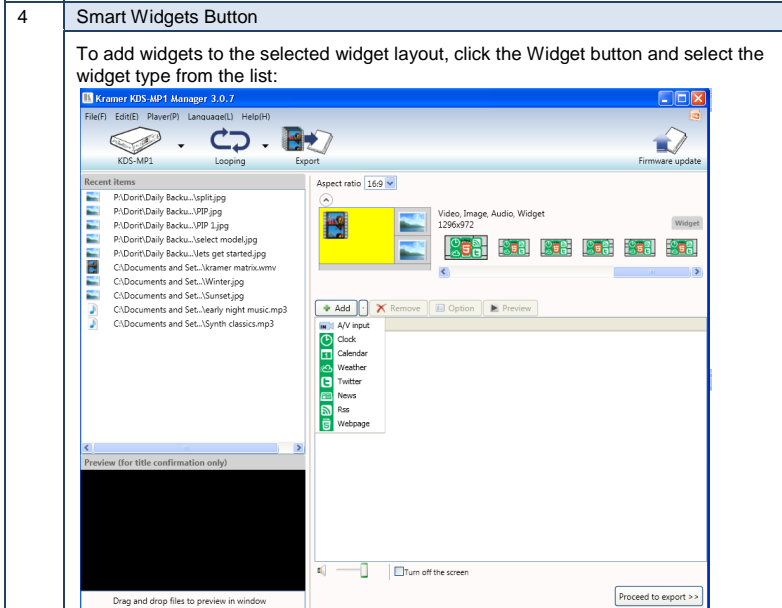
#	Feature and Function
	<p>You can also select a one-screen layout that will show up to 10 playlists in sequence:</p>  <p>Selecting the widgets layout lets you insert widgets to any of the windows:</p> 
3	<p>Add Button</p>
	<p>Click the Add button to add the playlist items. The Open window appears:</p>  <p>Select video, image and audio files and/or tickers and images and then click Open. The files are added to the Media list and also appear in the Recent Items window for future use:</p>

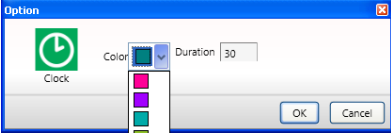
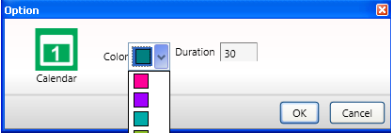
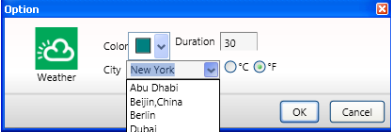
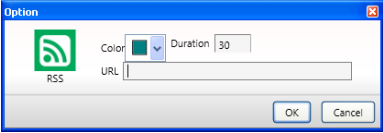
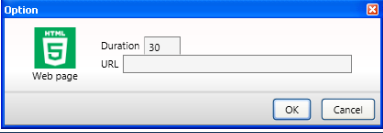


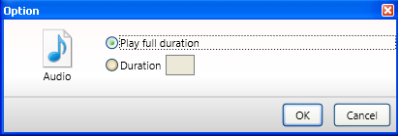
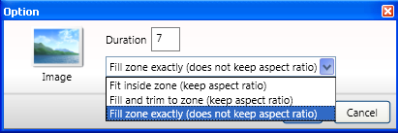
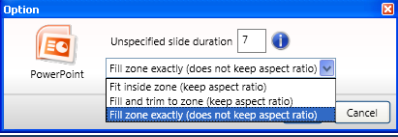
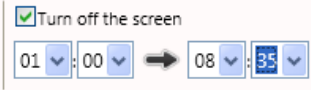
You can change the order in the list by dragging and dropping files into different locations.



KDS-MP1 supports only baseline JPEGs. Progressive/interlaced JPEG images are not supported.



#	Feature and Function
	<p>For each widget you can select an option or change the setting via the option button.</p> <p>Clock: Select the background color and the duration of the widget.</p>  <p>Calendar: Select the background color and the duration of the widget.</p>  <p>Weather: Select location, the units (Centigrade or Fahrenheit), the background color and the duration of the widget.</p>  <p>If your city does not appear in this list, type the name of the city or go to this Web site: www.worldweatheronline.com/country.aspx</p> <p>RSS: Select the URL, background color and the duration of the widget.</p>  <p>Web page: Select the URL and the duration of the widget.</p> 
5	<p>Remove Button Click to remove an item from the playlist.</p>
6	<p>Option Button You can select an option for each item in the playlist by selecting it and clicking the Option button. The selected option will appear under the Option column. The examples below show options for an mp3 file, a jpg file and a PowerPoint file, respectively.</p>

#	Feature and Function
	<p>mp3 File: Select either full duration or the number of seconds you want this piece to play.</p>  <p>jpg File: Select the duration of the image appearance on the screen and one of the three display options below.</p>  <p>Power Point File: Select the time duration of each slide (only if it is not specified in the PPT presentation) and set to one of the three display options below.</p> 
7	<p>Preview Button</p> <p>Click to preview the playlist. You can stop or pause the preview with the appropriate buttons below the preview window. To recall a file, you can drag it from the Media list or Recent Items list to the preview window and watch it</p>
8	<p>Firmware update Button</p> <p>Use to update the firmware (see Section 8)</p>
9	<p>PowerPoint Transcoding Indicator</p> <p>Indicates if PowerPoint is installed in your system</p>
10	<p>Volume Level Slider</p> <p>Sets the audio level of the playlist</p>
11	<p>Turn off the screen Check Box</p> <p>Check box to save energy by setting the time for which the video will be turned off: In the following example the video will be turned off between 01:00 am and 08:35 in the morning:</p> 
12	<p>Proceed to export Button</p> <p>After defining the playlist for each window in the layout, you can export it. To do so click the Proceed to export button (or click the Export icon on the top part of the window), see Section 7.2</p>

7.1.1.1 Looping Example

The following example shows the timeline of a looping playlist:

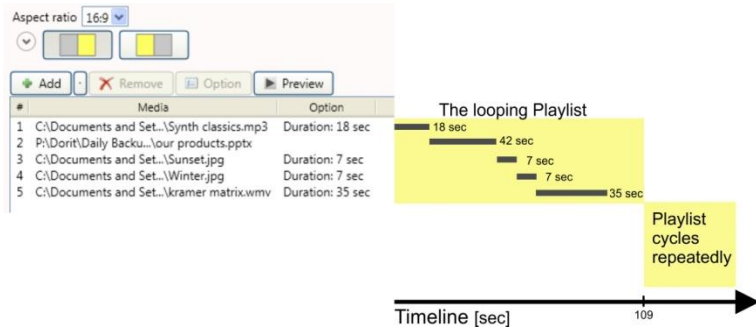


Figure 10: Looping Playlist Timeline

7.1.2 The Weekly Schedule Mode

The weekly schedule mode lets you set an hourly schedule for each day of the week which can include different screen layouts and playlists to be played at different times of the day and week. To access the weekly schedule, click the Looping icon on the top part of the **KDS-MP1 Manager** main window and select Weekly schedule. The following screen appears:

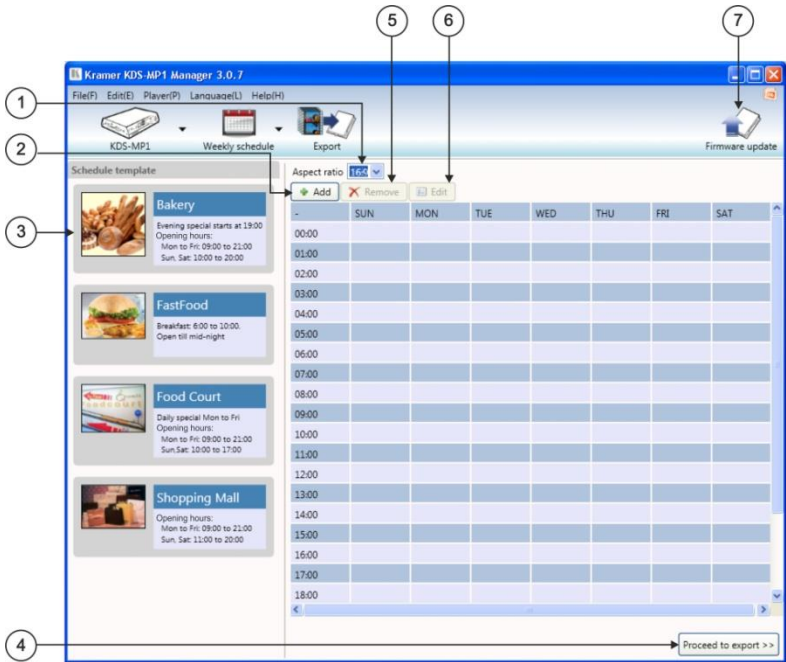
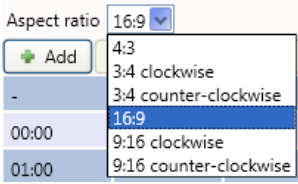
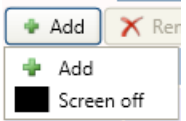


Figure 11: Setting the Weekly Schedule

#	Feature and Function
1	<p>Aspect Ratio Drop Down Box</p> <p>Set the aspect ratio to 4:3, 3:4 clockwise, 3:4 counter-clockwise, 16:9 (default), 9:16 clockwise or 6:19 counter-clockwise.</p> <p>The display can also be set vertically clockwise or counter-clockwise</p>  <p>If you are preparing the weekly schedule without using a template (located on the left side of the window), you have to set the aspect ratio first.</p>
2	<p>Add Button</p> <p>Click the Add button and select Add to add a playlist or select Screen off to determine the time in which the system will be in the sleep mode:</p>  <p>Click Add to open the following window:</p>

#
Feature and Function

00
:
00
→
24
:
00

SUN
→
SAT

▼

+ Add
 ✖ Remove
 Option

#	Media	Option

OK
Cancel

Set the scheduled block (defines the time and day/s) for which the selected playlist will be active; set the days and the screen layout for the selected block and click Add to add the desired files.

You can change the order of the playlist items by dragging and dropping certain lines and remove items by selecting an item and clicking remove or by pressing the delete button on your keyboard.

For each selected item you can set the options in the same way as in the Looping mode (see the table in [Section 7.1.1](#)).

Click OK to approve or Cancel.

The example below shows a scheduled block set from Sunday to Monday between 6:00 and 10:00:

06
:
00
→
10
:
00

SUN
→
MON

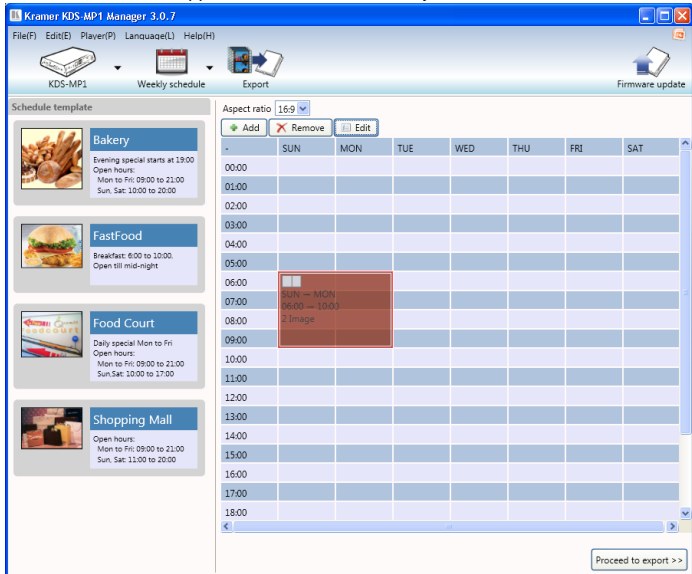
▼

+ Add
 ✖ Remove
 Option

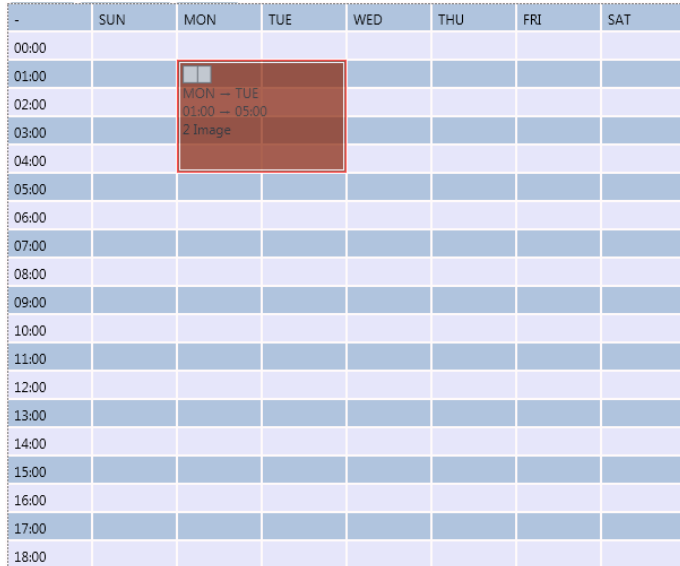
#	Media	Option
1	P:\Dorit\Daily Backu...sun set.jpg	Duration: 7 sec

Feature and Function

The scheduled block appears colored on the weekly schedule:



You can select the scheduled block and drag it to a different location within the weekly schedule as shown below:

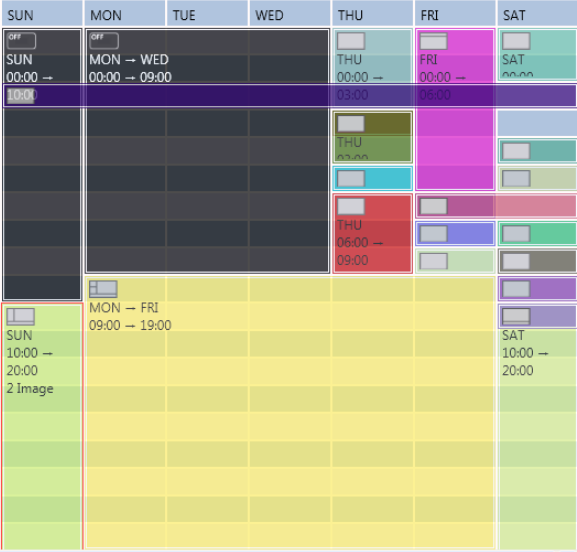


#	Feature and Function																																																																																																																																																																
	<p>Different scheduled blocks have different colors. Adding Screen off for certain times and days enter the system to the sleep mode (a time period in which playlist becomes inactive) and is marked OFF on a dark gray background:</p> <table border="1"> <thead> <tr> <th>-</th> <th>SUN</th> <th>MON</th> <th>TUE</th> <th>WED</th> <th>THU</th> <th>FRI</th> <th>SAT</th> </tr> </thead> <tbody> <tr> <td>00:00</td> <td>OFF</td> <td></td> <td></td> <td></td> <td></td> <td></td> <td></td> </tr> <tr> <td>01:00</td> <td>SUN 00:00 —</td> <td>MON — TUE 01:00 — 05:00</td> <td></td> <td></td> <td></td> <td></td> <td></td> </tr> <tr> <td>02:00</td> <td>1 PowerPoint</td> <td>2 Image</td> <td></td> <td></td> <td></td> <td></td> <td></td> </tr> <tr> <td>03:00</td> <td></td> <td></td> <td></td> <td></td> <td></td> <td></td> <td></td> </tr> <tr> <td>04:00</td> <td></td> <td></td> <td></td> <td></td> <td></td> <td></td> <td></td> </tr> <tr> <td>05:00</td> <td></td> <td></td> <td></td> <td></td> <td></td> <td></td> <td></td> </tr> <tr> <td>06:00</td> <td></td> <td>MON 05:25 —</td> <td></td> <td></td> <td></td> <td></td> <td></td> </tr> <tr> <td>07:00</td> <td></td> <td></td> <td></td> <td></td> <td></td> <td></td> <td></td> </tr> <tr> <td>08:00</td> <td></td> <td></td> <td></td> <td></td> <td></td> <td></td> <td></td> </tr> <tr> <td>09:00</td> <td></td> <td></td> <td></td> <td></td> <td></td> <td></td> <td></td> </tr> <tr> <td>10:00</td> <td></td> <td></td> <td></td> <td></td> <td></td> <td></td> <td></td> </tr> <tr> <td>11:00</td> <td></td> <td></td> <td></td> <td></td> <td></td> <td></td> <td></td> </tr> <tr> <td>12:00</td> <td></td> <td></td> <td></td> <td></td> <td></td> <td></td> <td></td> </tr> <tr> <td>13:00</td> <td></td> <td></td> <td></td> <td></td> <td></td> <td></td> <td></td> </tr> <tr> <td>14:00</td> <td></td> <td></td> <td></td> <td></td> <td></td> <td></td> <td></td> </tr> <tr> <td>15:00</td> <td></td> <td></td> <td></td> <td></td> <td></td> <td></td> <td></td> </tr> <tr> <td>16:00</td> <td></td> <td></td> <td></td> <td></td> <td></td> <td></td> <td></td> </tr> <tr> <td>17:00</td> <td></td> <td></td> <td></td> <td></td> <td></td> <td></td> <td></td> </tr> <tr> <td>18:00</td> <td></td> <td></td> <td></td> <td></td> <td></td> <td></td> <td></td> </tr> </tbody> </table>	-	SUN	MON	TUE	WED	THU	FRI	SAT	00:00	OFF							01:00	SUN 00:00 —	MON — TUE 01:00 — 05:00						02:00	1 PowerPoint	2 Image						03:00								04:00								05:00								06:00		MON 05:25 —						07:00								08:00								09:00								10:00								11:00								12:00								13:00								14:00								15:00								16:00								17:00								18:00							
-	SUN	MON	TUE	WED	THU	FRI	SAT																																																																																																																																																										
00:00	OFF																																																																																																																																																																
01:00	SUN 00:00 —	MON — TUE 01:00 — 05:00																																																																																																																																																															
02:00	1 PowerPoint	2 Image																																																																																																																																																															
03:00																																																																																																																																																																	
04:00																																																																																																																																																																	
05:00																																																																																																																																																																	
06:00		MON 05:25 —																																																																																																																																																															
07:00																																																																																																																																																																	
08:00																																																																																																																																																																	
09:00																																																																																																																																																																	
10:00																																																																																																																																																																	
11:00																																																																																																																																																																	
12:00																																																																																																																																																																	
13:00																																																																																																																																																																	
14:00																																																																																																																																																																	
15:00																																																																																																																																																																	
16:00																																																																																																																																																																	
17:00																																																																																																																																																																	
18:00																																																																																																																																																																	

3 **Schedule Template Area**

You can drag and drop one of the suggested templates for easier planning of the weekly schedule:

The screenshot shows the Kramer KDS-MP1 Manager 3.0.7 interface. On the left, there is a 'Schedule template' panel with four categories: Bakery, FastFood, Food Court, and Shopping Mall, each with a representative image and operating hours. The main area is a weekly schedule grid with columns for SUN, MON, TUE, WED, THU, FRI, and SAT, and rows for time slots from 00:00 to 18:00. The grid shows various scheduled blocks in different colors (green, red, yellow, dark gray) and some 'OFF' indicators. A 'Proceed to export >>' button is visible at the bottom right of the grid.

#	Feature and Function
	<p>You can make changes to each scheduled block by selecting it and clicking Edit or moving it about. You can delete a scheduled block by selecting it and clicking the remove button or by pressing the delete button on your keyboard.</p> <p>You can alter the schedule as required:</p> 
4	<p>Proceed to Export Button</p> <p>After setting the weekly schedule, you can export it. To do so click the Proceed to Export button (or click the Export icon on the top part of the window), see Section 7.2.</p>
5	<p>Remove Button</p> <p>Click to remove an item from the playlist or press delete on your keyboard.</p>
6	<p>Edit Button</p> <p>Click to edit a scheduled block.</p>
7	<p>Firmware update Button</p> <p>Use to update the firmware (see Section 8).</p>

7.2 Export the Schedule

After the schedule is prepared for each defined window in the layout, you need to export it to the media player. To export a file, click the Export icon on the top part of the window or click the Proceed to export button on the lower right side of the window.

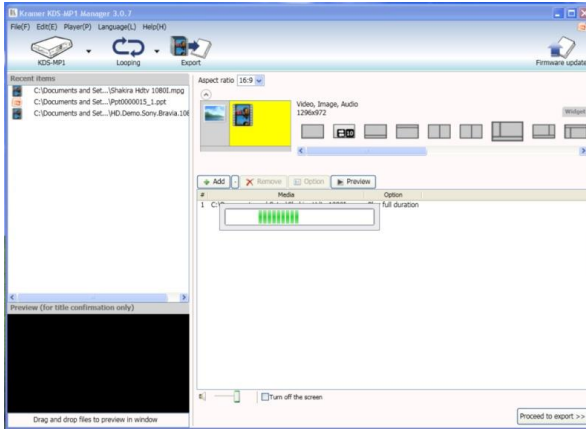


Figure 12: Proceeding to Export

The following window appears:

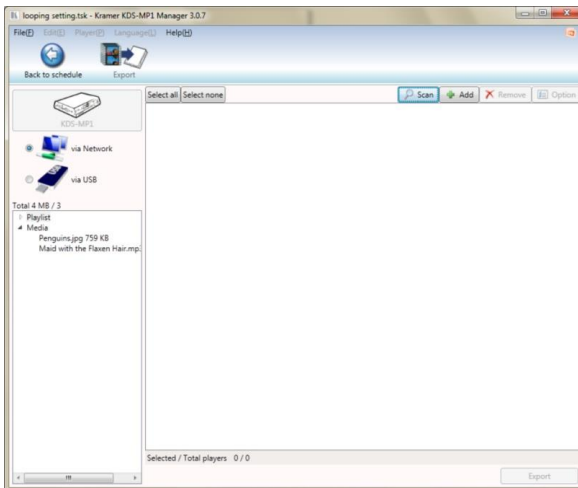


Figure 13: The Export Window

The playlist to export is listed on the lower left side of the Export window.

Select the export method via:

- **Network:** connect the machine to the Ethernet (see Section [7.2.1](#))
- **USB:** connect the memory stick to your PC (see Section [7.2.2](#))

7.2.1 Exporting via the Network

To export via the network, connect the **KDS-MP1** via the Ethernet (see [Figure 2](#)) and click Scan to search for the **KDS-MP1** IP number (see [Figure 14](#)) or click Add to manually add the IP number (see [Figure 15](#)).

If Multiple **KDS-MP1** units are connected and detected, you can select them and export the content for playback to one or all of them at once.

Click the Scan button:

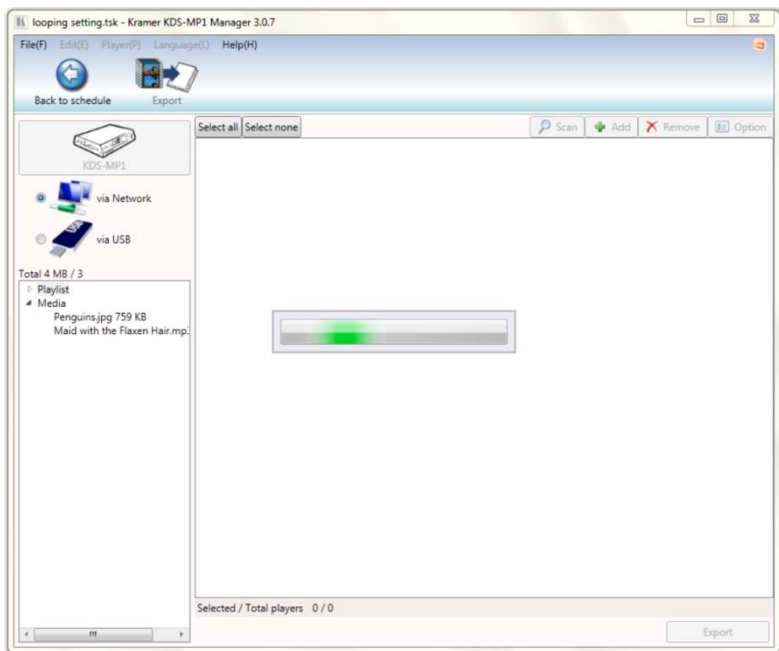


Figure 14: Searching for the IP Number

Or click the Add button to manually add a machine:

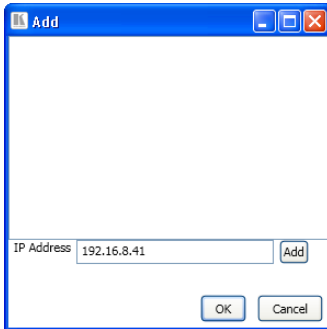


Figure 15: Manually Entering the IP Number

After clicking the Scan button, the media players list appears:

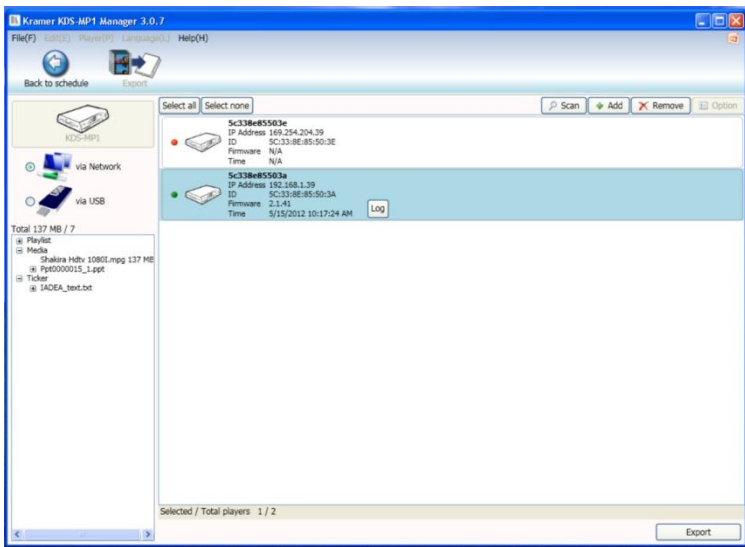


Figure 16: The media player list

The media player is checked green (●) if the player is online and checked red (●) if it was previously detected but is currently offline.

Select the media player to which you want to export the playlist (you can also select the entire list or deselect the list using the Select all or Select none buttons, respectively).



Each time you connect a media player or change its network settings, a new entry is added to the list of possible network devices in **KDS-MP1 Manager**. The program runs a background check to verify that the players listed are online and a “Please Wait” message appears on the display.

The background check responds quickly when players in the list are online, but slows down when dealing with disconnected players because it waits for a network timeout before determining an offline status (●).

To improve response times, remove the unused media players by right clicking on the player in the list and selecting Remove from list.

Click the Export button:

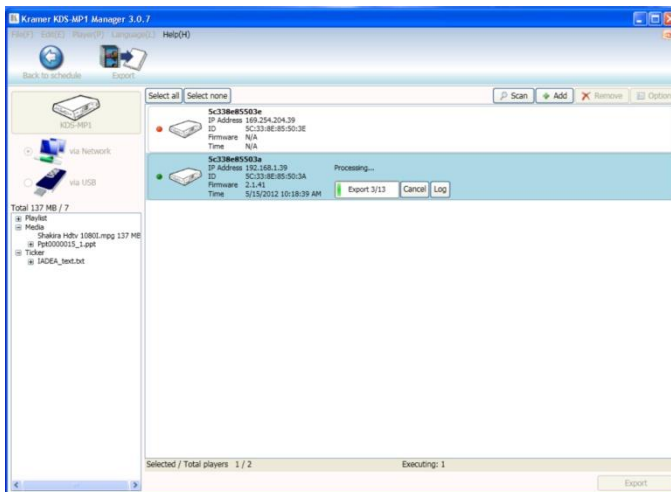


Figure 17: Files Exported to the Media Player

The files are exported to the selected media player. The export bar shows the export progress, indicating the number of files exported. Wait for the completion of the process:

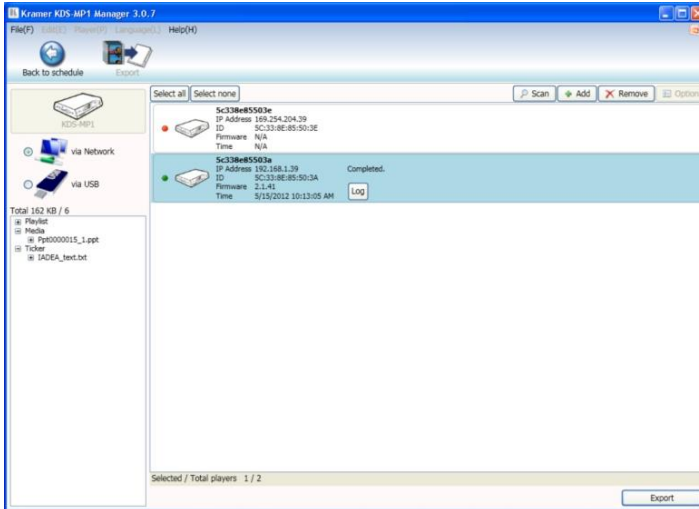


Figure 18: Completion of Export

You can click the Log button to review the export process:

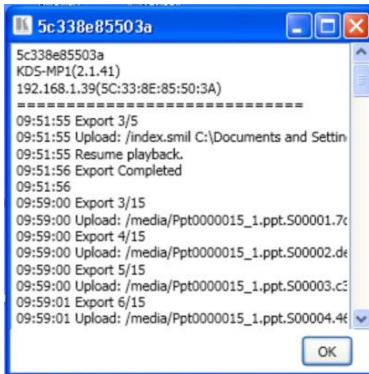


Figure 19: Export Log

Once the export process is complete, the media player transmits the data to the output and starts playing the playlist.

In the same way you can export the playlist for each window in the layout.

7.2.2 Exporting via USB

To export the playlist without using the network, you can connect a memory stick to a USB port on your PC.



Note that the USB memory stick must be formatted using FAT/FAT32.

Check via USB, browse to find the memory stick and type the password (if set in the configuration setup, see [Section 5.2](#)):

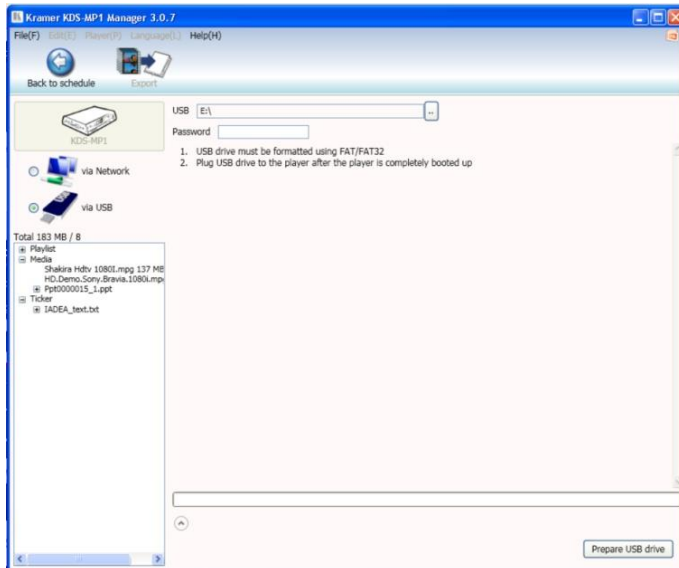


Figure 20: Locate USB Memory Stick

1. Click the “Prepare USB drive” button.
2. You will be prompted to keep or delete previous contents.

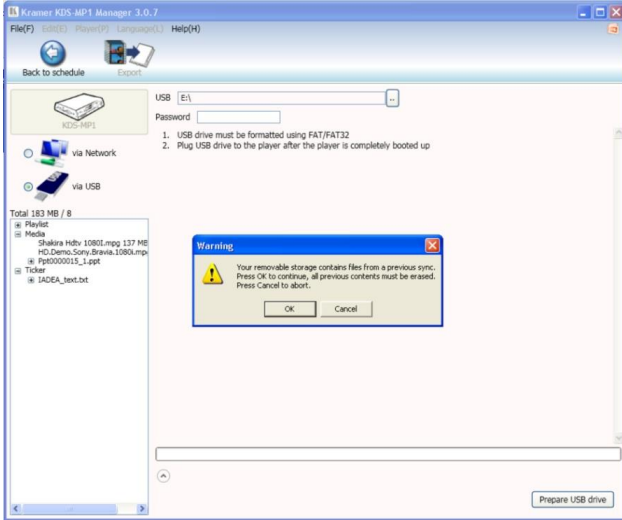


Figure 21: USB Content Warning

3. The progress bar shows an estimate of the remaining time to completion:

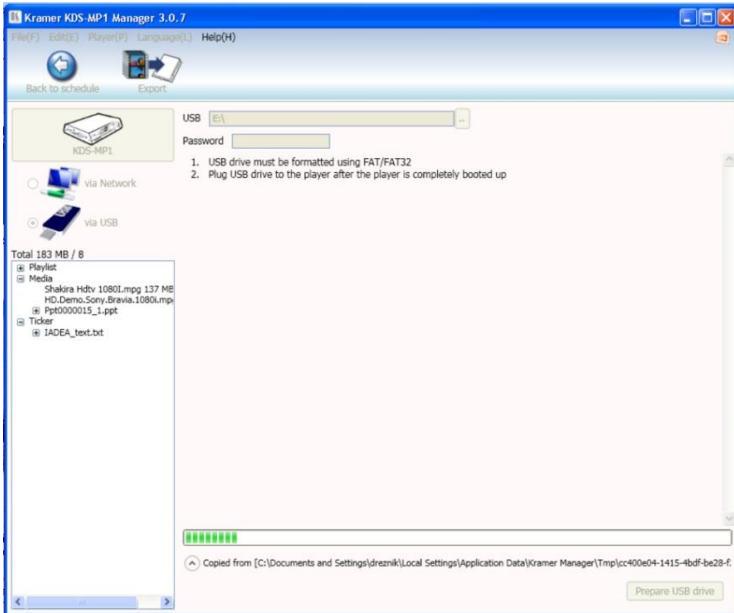


Figure 22: Copying Content to the USB Stick

4. Upon completion, remove the USB drive and insert it into the **KDS-MP1 Digital Media Player** (see [Figure 23](#)). The on-screen display will prompt that files are being copied:
“Copying from USB drive. After all files are copied, this screen will disappear and you may then remove the USB drive”.
5. The **KDS-MP1** begins to play the new playlist once the files are copied.
6. Remove the USB drive from the player.

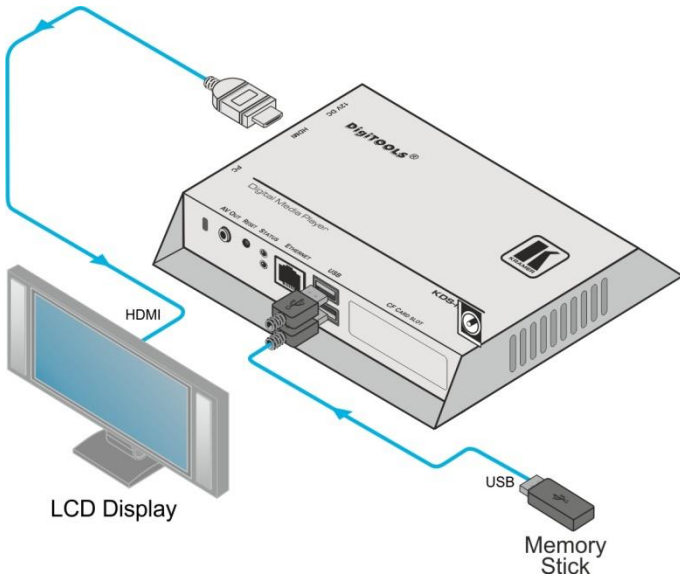


Figure 23: Exporting via USB memory stick

7.3 The Menu

Figure 24 shows the menu:

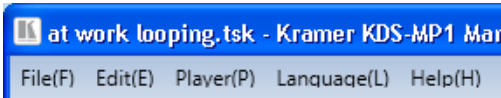


Figure 24: The Menu

Menu	Menu Item
File (F)	New (N) – open a new schedule Open (O) – open an existing file Save (S) – save a schedule Exit (X) – exit the program This menu shows a list of recent files
Edit (E)	Looping – edit the looping schedule Weekly Schedule – edit the weekly schedule
Player (P)	Click to perform firmware update
Language (L)	Select a language
Help (H)	Click for tips for the new user or for software revision details

8 Firmware Update

This section describes how to update the **KDS-MP1** firmware. **KDS-MP1 Manager** checks for program updates via the Internet connection, if available. You can also manually check if a new firmware version exists.



The latest firmware version can be downloaded from the Kramer Web site at www.kramerelectronics.com

In the **KDS-MP1 Manager** main window, click the Firmware update icon on the top right side:

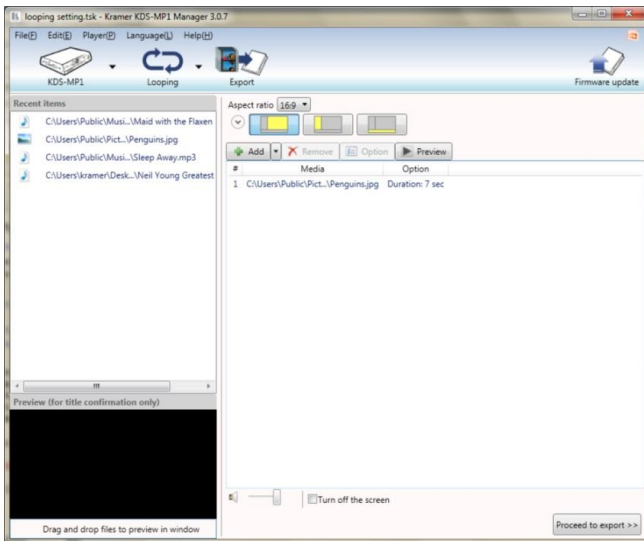


Figure 25: Click Firmware Update

A warning screen appears describing firmware upgrade risks. After reading its contents you may click OK to proceed or Cancel to continue to other tasks.

8.1 Firmware Update via Network

If the **KDS-MP1 Digital Media Player** is connected via the network, mark the Media Player unit for which you want to update the firmware, select the firmware to update (see [Figure 28](#)) and then click the Firmware update button on the window lower right side:

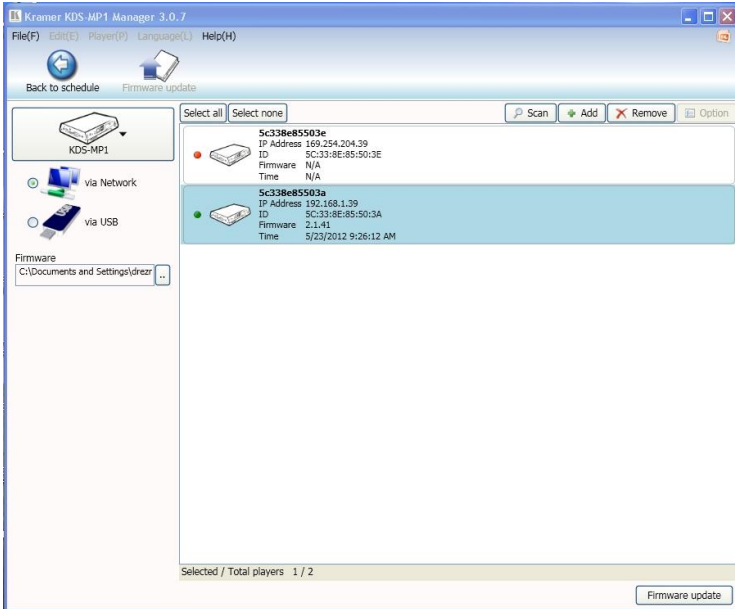


Figure 26: Firmware Update Window (via Network)

8.2 Firmware Update via USB

If you wish to perform firmware update via the USB memory stick, select the USB icon. The following window appears:

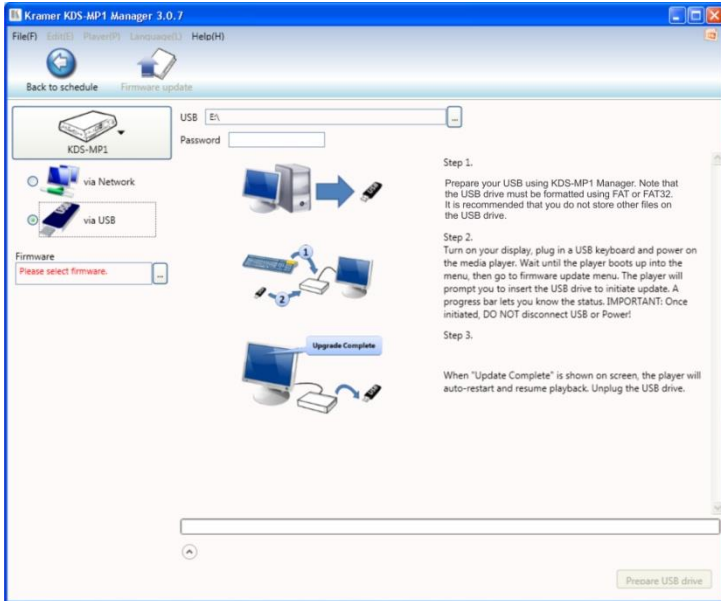


Figure 27: Firmware Update Window (via USB)

To update the firmware via USB:

1. Connect a USB memory stick to the USB port of your PC.
The USB drive should be formatted using FAT/FAT32 and preferably empty
2. Select the firmware file to update:

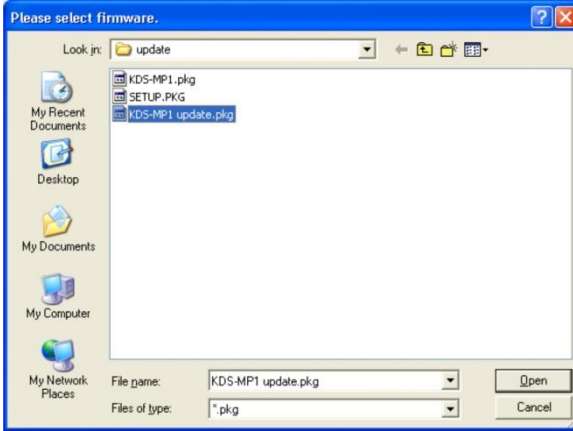


Figure 28: Select Firmware

3. Click the Prepare USB drive button.

The program first deletes previous firmware files and then copies the new files to the USB memory stick:

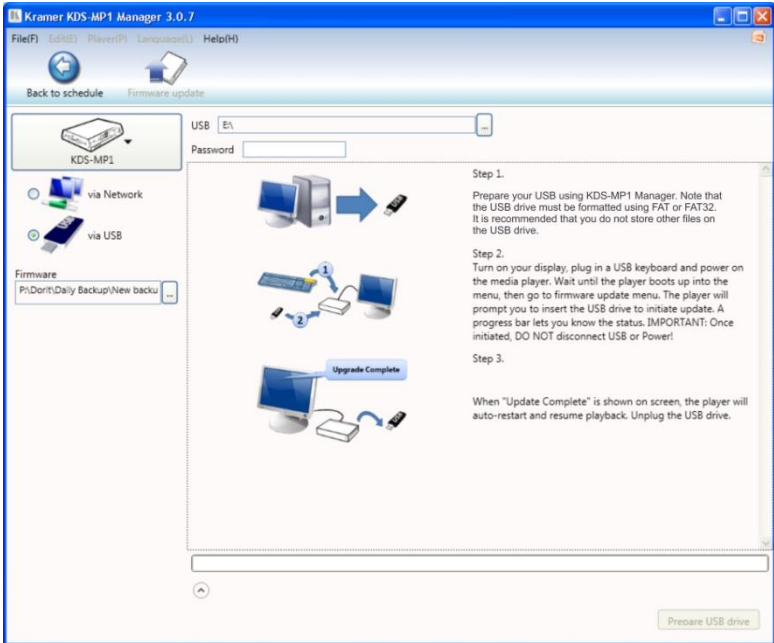


Figure 29: Copying Firmware File to USB Firmware

4. Wait until the files are copied and then disconnect the USB memory stick.
5. Turn On the power on the display that is connected to the output of the **KDS-MP1 Digital Media Player**.
6. Connect the USB keyboard to the USB port on the **KDS-MP1 Digital Media Player**.
The **KDS-MP1** Media Player will boot up into the configuration mode.
7. Go to the firmware update menu (see [Section 5.2](#)) and follow the instructions on the display.
8. When prompted, connect the memory stick to the USB port on the **KDS-MP1**.
The firmware update process starts immediately and the progress bar on the display shows the status.



Do not remove the memory stick or turn the power Off before update is complete.



Upon completion of the update, the **KDS-MP1** restarts automatically and starts playback.

9. Remove the memory stick.

9 Technical Specifications

INPUTS:	1 Ethernet on an RJ-45 connector 2 USB connectors
OUTPUTS:	1 HDMI connector 1 VGA on a 15-pin HD connector 1 composite video/audio on a 3.5mm mini jack connector
RESOLUTIONS:	Up to 1080p Full HD video/stills
CONTROLS:	STATUS LEDs
NETWORKING:	Ethernet
PROGRAMMING:	SMIL + HTML5
VIDEO CODECS:	H.264 (1080p) VC-1 (1080p) MPEG-4 ASP (720p) MPEG-2 (1080p) MPEG-1 (720p)
IMAGE CODECS:	PNG (1920x1080) JPEG (1920x1080)
AUDIO CODECS:	MPEG L2/MP3 up to 320Kbps AAC in H.264 streams
MOUNTING:	VESA MIS-D 100 mounting points
LOCAL STORAGE:	4GB solid-state storage (2 hours of 4Mbps video)
POWER CONSUMPTION:	9 watts (typical)
COMPLIANCE:	CE / FCC / RoHS
POWER SOURCE:	12V DC, 600mA
OPERATING TEMPERATURE:	0° to +40°C (32° to 104°F)
STORAGE TEMPERATURE:	-45° to +72°C (-49° to 162°F)
HUMIDITY:	5% to 85%, RHL non-condensing
DIMENSIONS:	15.6cm x 11.5cm x 2.9cm (6.1" x 4.5" x 1.1") W, D, H
WEIGHT:	0.38kg (0.8lbs) approx.
ACCESSORIES:	Power adapter, Ethernet cable, 3.5mm-to-RCA A/V cable
Specifications are subject to change without notice at http://www.kramerelectronics.com	

LIMITED WARRANTY

The warranty obligations of Kramer Electronics for this product are limited to the terms set forth below:

What is Covered

This limited warranty covers defects in materials and workmanship in this product.

What is Not Covered

This limited warranty does not cover any damage, deterioration or malfunction resulting from any alteration, modification, improper or unreasonable use or maintenance, misuse, abuse, accident, neglect, exposure to excess moisture, fire, improper packing and shipping (such claims must be presented to the carrier), lightning, power surges, or other acts of nature. This limited warranty does not cover any damage, deterioration or malfunction resulting from the installation or removal of this product from any installation, any unauthorized tampering with this product, any repairs attempted by anyone unauthorized by Kramer Electronics to make such repairs, or any other cause which does not relate directly to a defect in materials and/or workmanship of this product. This limited warranty does not cover cartons, equipment enclosures, cables or accessories used in conjunction with this product.

Without limiting any other exclusion herein, Kramer Electronics does not warrant that the product covered hereby, including, without limitation, the technology and/or integrated circuit(s) included in the product, will not become obsolete or that such items are or will remain compatible with any other product or technology with which the product may be used.

How Long Does this Coverage Last

Three years as of this printing; please check our Web site for the most current and accurate warranty information.

Who is Covered

Only the original purchaser of this product is covered under this limited warranty. This limited warranty is not transferable to subsequent purchasers or owners of this product.

What Kramer Electronics will do

Kramer Electronics will, at its sole option, provide one of the following three remedies to whatever extent it shall deem necessary to satisfy a proper claim under this limited warranty:

1. Elect to repair or facilitate the repair of any defective parts within a reasonable period of time, free of any charge for the necessary parts and labor to complete the repair and restore this product to its proper operating condition. Kramer Electronics will also pay the shipping costs necessary to return this product once the repair is complete.
2. Replace this product with a direct replacement or with a similar product deemed by Kramer Electronics to perform substantially the same function as the original product.
3. Issue a refund of the original purchase price less depreciation to be determined based on the age of the product at the time remedy is sought under this limited warranty.

What Kramer Electronics will not do Under This Limited Warranty

If this product is returned to Kramer Electronics or the authorized dealer from which it was purchased or any other party authorized to repair Kramer Electronics products, this product must be insured during shipment, with the insurance and shipping charges prepaid by you. If this product is returned uninsured, you assume all risks of loss or damage during shipment. Kramer Electronics will not be responsible for any costs related to the removal or re-installation of this product from or into any installation. Kramer Electronics will not be responsible for any costs related to any setting up this product, any adjustment of user controls or any programming required for a specific installation of this product.

How to Obtain a Remedy under this Limited Warranty

To obtain a remedy under this limited warranty, you must contact either the authorized Kramer Electronics reseller from whom you purchased this product or the Kramer Electronics office nearest you. For a list of authorized Kramer Electronics resellers and/or Kramer Electronics authorized service providers, please visit our web site at www.kramerelectronics.com or contact the Kramer Electronics office nearest you.

In order to pursue any remedy under this limited warranty, you must possess an original, dated receipt as proof of purchase from an authorized Kramer Electronics reseller. If this product is returned under this limited warranty, a return authorization number, obtained from Kramer Electronics, will be required. You may also be directed to an authorized reseller or a person authorized by Kramer Electronics to repair the product.

If it is decided that this product should be returned directly to Kramer Electronics, this product should be properly packed, preferably in the original carton, for shipping. Cartons not bearing a return authorization number will be refused.

Limitation on Liability

THE MAXIMUM LIABILITY OF KRAMER ELECTRONICS UNDER THIS LIMITED WARRANTY SHALL NOT EXCEED THE ACTUAL PURCHASE PRICE PAID FOR THE PRODUCT. TO THE MAXIMUM EXTENT PERMITTED BY LAW, KRAMER ELECTRONICS IS NOT RESPONSIBLE FOR DIRECT, SPECIAL, INCIDENTAL OR CONSEQUENTIAL DAMAGES RESULTING FROM ANY BREACH OF WARRANTY OR CONDITION, OR UNDER ANY OTHER LEGAL THEORY. Some countries, districts or states do not allow the exclusion or limitation of relief, special, incidental, consequential or indirect damages, or the limitation of liability to specified amounts, so the above limitations or exclusions may not apply to you.

Exclusive Remedy

TO THE MAXIMUM EXTENT PERMITTED BY LAW, THIS LIMITED WARRANTY AND THE REMEDIES SET FORTH ABOVE ARE EXCLUSIVE AND IN LIEU OF ALL OTHER WARRANTIES, REMEDIES AND CONDITIONS, WHETHER ORAL OR WRITTEN, EXPRESS OR IMPLIED. TO THE MAXIMUM EXTENT PERMITTED BY LAW, KRAMER ELECTRONICS SPECIFICALLY DISCLAIMS ANY AND ALL IMPLIED WARRANTIES, INCLUDING, WITHOUT LIMITATION, WARRANTIES OF MERCHANTABILITY AND FITNESS FOR A PARTICULAR PURPOSE. IF KRAMER ELECTRONICS CANNOT LAWFULLY DISCLAIM OR EXCLUDE IMPLIED WARRANTIES UNDER APPLICABLE LAW, THEN ALL IMPLIED WARRANTIES COVERING THIS PRODUCT, INCLUDING WARRANTIES OF MERCHANTABILITY AND FITNESS FOR A PARTICULAR PURPOSE, SHALL APPLY TO THIS PRODUCT AS PROVIDED UNDER APPLICABLE LAW.

IF ANY PRODUCT TO WHICH THIS LIMITED WARRANTY APPLIES IS A "CONSUMER PRODUCT" UNDER THE MAGNUSON-MOSS WARRANTY ACT (15 U.S.C.A. §2301, ET SEQ.) OR OTHER APPLICABLE LAW, THE FOREGOING DISCLAIMER OF IMPLIED WARRANTIES SHALL NOT APPLY TO YOU, AND ALL IMPLIED WARRANTIES ON THIS PRODUCT, INCLUDING WARRANTIES OF MERCHANTABILITY AND FITNESS FOR THE PARTICULAR PURPOSE, SHALL APPLY AS PROVIDED UNDER APPLICABLE LAW.

Other Conditions

This limited warranty gives you specific legal rights, and you may have other rights which vary from country to country or state to state.

This limited warranty is void if (i) the label bearing the serial number of this product has been removed or defaced, (ii) the product is not distributed by Kramer Electronics or (iii) this product is not purchased from an authorized Kramer Electronics reseller. If you are unsure whether a reseller is an authorized Kramer Electronics reseller, please visit our Web site at www.kramerelectronics.com or contact a Kramer Electronics office from the list at the end of this document.

Your rights under this limited warranty are not diminished if you do not complete and return the product registration form or complete and submit the online product registration form. Kramer Electronics thanks you for purchasing a Kramer Electronics product. We hope it will give you years of satisfaction.



For the latest information on our products and a list of Kramer distributors, visit our Web site where updates to this user manual may be found.

We welcome your questions, comments, and feedback.

Web site: www.kramerelectronics.com

E-mail: info@kramerel.com



SAFETY WARNING

Disconnect the unit from the power supply before opening and servicing



P/N: 2900-300131



Rev: 2