



Scan for full manual

## KT-107S Quick Start Guide

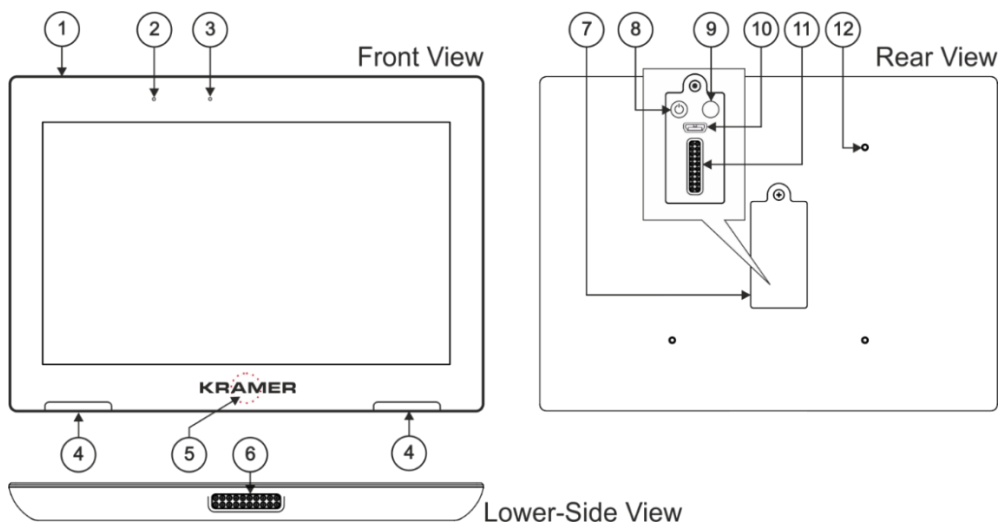
This guide helps you install and use your KT-107S for the first time.

Go to [www.kramerav.com/downloads/KT-107S](http://www.kramerav.com/downloads/KT-107S) to download the latest user manual and check if firmware upgrades are available.

### Step 1: Check what's in the box

- ✓ KT-107S Touch Panel
- ✓ Tabletop mount
- ✓ On-wall mount unit
- ✓ 1 Quick start guide
- ✓ 1 C-USB/Micro B cable
- ✓ AC/DC adapter
- ✓ Installation screws
- ✓ Panel mount plate
- ✓ 1 right-angle OTG USB cable

### Step 2: Get to know your KT-107S



#	Feature	Function
1	Hidden Reset Button	Located on top-side. Insert a pin and hold for a few seconds to reset <b>KT-107S</b> .
2	Light Sensor	Automatically adjusts the screen brightness according to the room lighting conditions.
3	Activity RGB LED	Lights green when powered, flashes green when charging the battery.
4	Speakers	To output the sound.
5	Control Button	Press and hold (for 2 seconds) to open the pop-up menu which lets you power down the unit, reboot it or return to the Home-page. The control button is password protected (default: Kramer).
6	Tabletop Mount Connector	For connecting to the tabletop mount.
7	Cover	Covers the wall mount connections and power button.
8	Power Button	Press to power on the <b>KT-107S</b> . When powered: Press briefly to enter/exit sleep mode. Press and hold (for 1 second) to open the pop-up menu which lets you power down the unit, reboot it or return to the Home-page. The Power button is password protected (default: Kramer). Press and hold (for more than 5 seconds) to power down the device immediately. This button can also be used for firmware upgrade.
9	Volume-up Button	Used for firmware upgrade (also can be used to increase <b>KT-107S</b> speaker volume).
10	Micro USB Port	For connecting to an adjacent on-wall USB device and for firmware upgrade.
11	Flat Cable Connector	For connecting to the on-wall mount unit.
12	Connecting Holes	For connecting to the tabletop mount or the panel mount plate. To prevent potential damage to the <b>Touch Panel</b> , use only Kramer supplied screws and mounts.

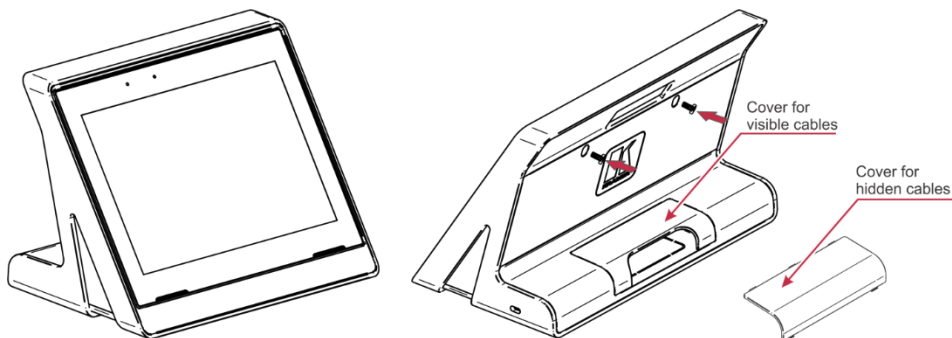
## Step 3: Mounting the KT-107S

**Mounting on a table using one of the following options:**

**Portable Mount:** place the tabletop mount on the table. Connected cables remain visible and the table remains intact.

**Secure Mount:** secure the tabletop mount to the table as follows:

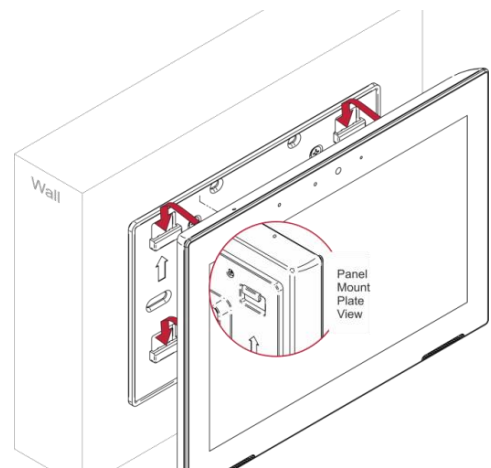
1. Measure the exact location on the surface of the table where you want to install the **KT-107S**.
2. Drill a hole in the table and optionally cut the cable pass-through opening according to the cut-out dimensions defined in the user manual.
3. Secure the tabletop mount to the table using the M5x60 secure screw.
4. Connect the Ethernet port to a PoE-enabled source. Optionally, you can connect the power adapter too (as backup).
5. Replace the appropriate cover and place the **KT-107S** over the tabletop mount (the **Touch Panel** is magnetically held in place), by first inserting the lower part of the **Touch Panel** then carefully laying the **KT-107S** in place.
6. Wait for the Home-page to load and then secure the **KT-107S** to the tabletop mount from the rear side (using 2 M2x4 screws, supplied with the unit).
7. Optionally, lock the tabletop mount with a Kensington locker (not supplied).



### Mounting on the wall:

Before mounting **KT-107S** on a wall, install an in-wall junction box (recommended boxes are listed in the user manual)

1. Attach the on-wall mount unit to the installed junction box (top side up see indication arrows on unit). Connect Ethernet and/or power cables and optionally, insert the right-angle USB cable (supplied) for connecting to an adjacent external USB device.
2. Screw the 4 wall-mounting screws (supplied) through the screw openings. The various screw openings fit various types of wall junction boxes.
3. On the rear side of the **KT-107S**, remove the screw cover and the cover (by slightly pressing downwards and then pulling out) and set aside.
4. Attach the panel mount plate to the rear side of the **KT-107S** (using 4 M2x4 screws, supplied).
5. Connect the flat cable from the on-wall mount (attached to the in-wall junction box) to the connector on the rear of **KT-107S**.
6. Hang the **KT-107S** on the wall by sliding the tabs on the attached panel mount plate over the grooves on the on-wall mount unit.



For optimum range and performance use the recommended Kramer cables available at [www.kramerav.com/product/KT-107S](http://www.kramerav.com/product/KT-107S). Using third-party cables may cause damage!



- Ensure that the environment (e.g., maximum ambient temperature & air flow) is compatible for the device.
- Avoid uneven mechanical loading.
- Appropriate consideration of equipment nameplate ratings should be used for avoiding overloading of the circuits.
- Reliable earthing of rack-mounted equipment should be maintained.
- Maximum mounting height for the device is 2 meters.

## Step 4: Connect the power

Connect the power cord to **KT-107S** and plug it into the mains electricity.

Safety Instructions



**Caution:** There are no operator serviceable parts inside the unit.  
**Warning:** Use only the power cord that is supplied with the unit.  
**Warning:** Disconnect the power and unplug the unit from the wall before installing.

See [www.KramerAV.com](http://www.KramerAV.com) for updated safety information

## Step 5: Customizing the KT-107S settings

The Settings page is accessible from the Home-page and enables customizing the **KT-107S** settings:



### To modify date and time settings:

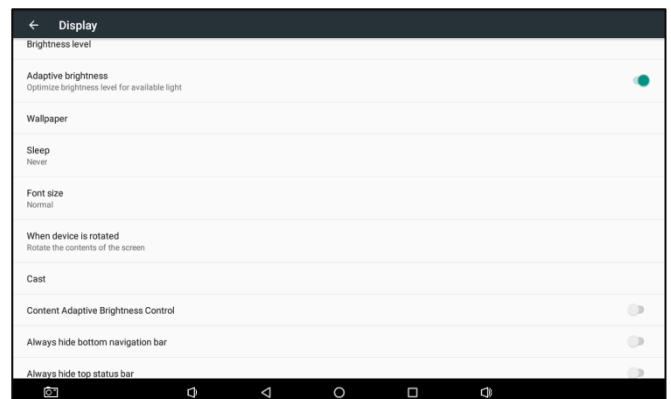
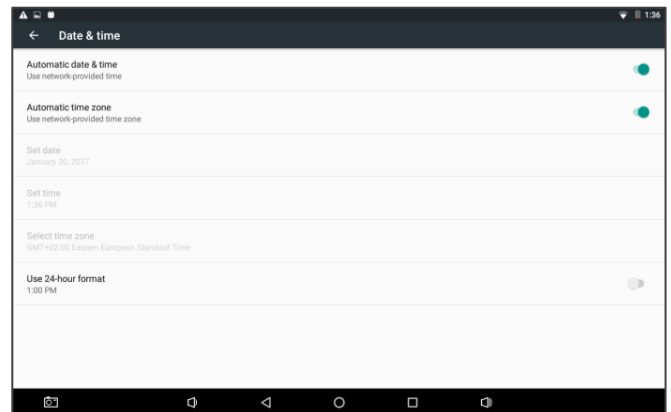
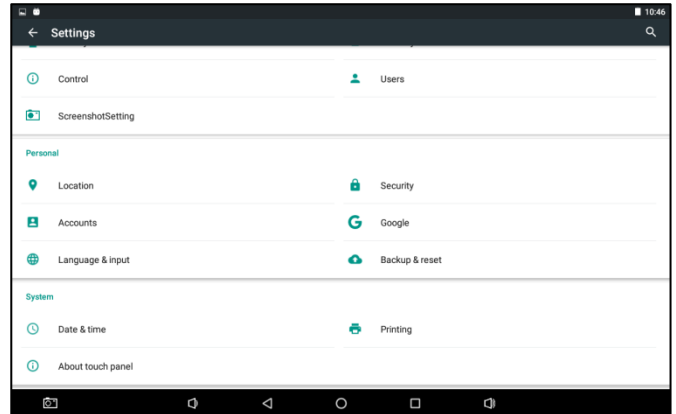
1. In the Home-page, click **Settings**.
2. Scroll down to the System area and click **Date & time**.
3. Enable **Automatic date & time** to derive the date and time from the Network. When disabled, enter the date and time manually.
4. Select the time format.

### To configure the Boot Start App:

1. In the Home page click **Settings**.
2. Click **Control**.
3. Click **Select Boot Start App** and select one of the available Apps (Kramer Control or K-Touch) to appear upon startup or select None.

### To modify display settings:

1. In the Home-page, click **Settings**.
2. Select **Display**.
3. Set the following (as required):
  - **Brightness:** brightness level, adaptive brightness.
  - **Status Bar:** Show/hide lower and/or top status bar.
  - **Auto Sleep:** Sleep timeout.

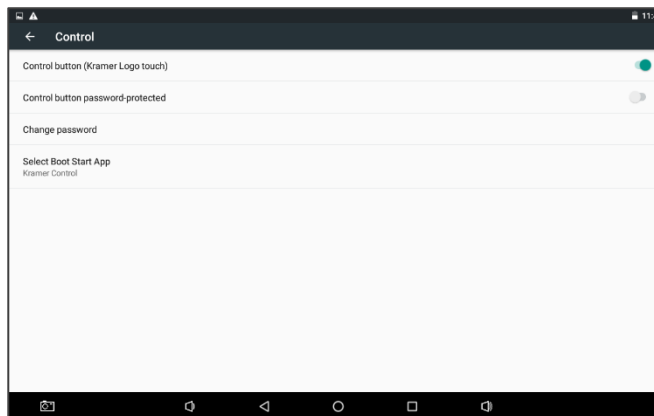


**To modify Control button settings:**

1. In the Home-page, click **Settings**.
2. Select **Control**.
3. Enable or disable the **Control button (Kramer Logo touch)**.
4. Set **Control button password protected** to be enabled/disabled.

**To change the password of the control button:**

1. In the Home-page, click **Settings**.
2. Select **Control**.
3. Click **Change password** (default: Kramer).
4. Follow the instructions in the Password Set window.



## Technical Specifications:

Tabletop Mount Ports:	1 1000/100/10BaseT Ethernet on RJ-45 connector; 1 micro USB 2.0 2-pin terminal block for DC power supply
On-wall Mount Ports:	1 1000/100/10BaseT Ethernet on RJ-45 connector 1 2-pin terminal block connector for DC power supply
CPU Performance:	1.6GHz Quad Core, GPU, 2GB RAM, 16GB Flash
OS Software:	Android 6.0.1
Multi Touch:	10 points, 2-finger gesture
Display:	7" IPS, 1280x800 RGB pixels, 16:10 aspect ratio, ±80° horizontal/vertical viewing angles, 400cd/m2 brightness, 800:1 contrast ratio
Video Format:	Decoding: H.265/HEVC; H.264/AVC; MPEG-1/2/4; DivX 3/4/5/6; MVC; GOOGLE VP8; VC-1; H.263; SORENSON SPARK; ON2 VP6; MOTION JPEG Encoding: H.264/AVC
Ethernet Port:	10/100/1000Mbps PoE LAN
Battery:	Rechargeable, supports up to 3 hours of portable operation
Controls:	Hidden reset button, power button, volume-up button Touch panel status LED: flashes green during charging, green for fully charged
Power Inputs:	Power over Ethernet (complies with IEEE802.3af and IEEE802.3at PoE standards), power supply unit
Power Consumption:	5V DC, 3A
Operating Temperature:	0° to +40°C (32° to 104°F)
Storage Temperature:	-10° to +55°C (14° to 131°F)
Humidity:	10% to 90%, RHL non-condensing
Case Design:	Black body and cover
Dimensions:	Shipping dimensions: 22.4cm x 13cm x 20.6cm (8.8" x 5.12" x 8.1"), W, D, H Touch panel: 17.8cm x 1.3cm x 13cm (7" x 0.51" x 5.12"), W, D, H Tabletop mount: 18.5cm x 10.7cm x 12.4cm (7.28" x 4.2" x 4.88"), W, D, H Panel mount plate: 14.6cm x 3.7cm x 9.2cm (5.75" x 1.46" x 3.62"), W, D, H On-wall mount unit: 14.6cm x 1.1cm x 9.1cm (5.75" x 0.43" x 3.58"), W, D, H
Weight:	Shipping weight: 1.8kg (3.97lbs) approx.; Touch panel: 0.37kg (0.8lbs) approx.
Included Accessories:	Power supply unit adapter (5V, 4.0A AC/DC), tabletop mount, on-wall mount unit, panel-mount plate, right-angle OTG USB cable, 1 C-USB/MicroB cable, installation screws
Certifications:	CE/CB, FCC, ROHS, REACH
Mounting Options:	Table top (with tabletop mount unit), on-wall (with mount unit and panel mount plate)
Specifications are subject to change without notice at <a href="http://www.kramerav.com">www.kramerav.com</a>	