

OMM-2500

Multi-format Modular matrix

32x32 DVI / HDMI / SDI / DisplayPort Matrix



TABLE OF CONTENTS

Chapter 1. Introduction and installation	4
1.1 Key features.....	4
1.2 Shipping group.....	5
1.3 Notice of safe usage.....	6
1.4 Physical description.....	6
1.5 Installation.....	7
1.5.1 Initialization	7
1.5.2 Connection for remote control	7
1.6 EDID Configuration.....	7
Chapter 2. Control setup.....	9
2.1 TCP/IP.....	9
2.1.1 TCP/IP setup of PC.....	9
2.1.2 Launching Telnet	9
2.2 RS-232.....	10
2.2.1 Launching HyperTerminal.....	10
Chapter 3. Control operation	11
3.1 Home & State.....	11
3.2 LINK mode.....	12
3.2.1 All Link.....	13
3.2.2 All Unlink	13
3.3 Configuration mode.....	14
3.3.1 Channel Name	15
3.3.2 LAN & RS232.....	16
3.3.3 Multi Viewer	17
3.3.4 Video Generator.....	18
3.3.5 Monitoring Port.....	19
3.3.6 EDID Management	20
3.3.7 HDCP on/off	24
3.3.8 Preset.....	25
3.3.9 Control Lock.....	28
Chapter 4. Control operation (Key button).....	29
4.1 LINK mode.....	29
4.1.1 All Unlink	29
4.2 Configuration mode.....	30
4.2.1 Channel Name	31
4.2.2 LAN & RS232.....	32
4.2.3 Multi Viewer	32
4.2.4 Video Generator.....	32
4.2.5 Monitoring Port.....	32
4.2.6 EDID Management	33
4.2.7 HDCP on/off	35
4.2.8 Control Lock.....	35
Chapter 5. PC program operation.....	36
5.1 PC program file download and Installation.....	36
5.2 Connect Info.....	37

Chapter 6. Web control panel operation	38
Chapter 7. Command input operation.....	39
7.1 Command input structure.....	39
7.2 Examples of command inputs.....	40
7.2.1 Link input and output.....	40
7.2.2 Input and output status	40
7.2.3 Input and Output Name request and setting.....	41
7.2.4 Network setting	41
7.2.5 Video generator setting.....	42
7.2.6 Monitor output port setting	43
7.2.7 EDID control command.....	44
7.2.8 HDCP On off setting	44
7.2.9 Baud rate setting for RS-232	45
7.2.10 Multi-viewer card (QDVI-O) setting.....	45
7.2.11 Slot status request	46
7.2.12 Control lock command	47
7.2.13 Preset Control Command	48
7.2.14 Power State Request.....	49
7.2.15 Firmware Version Request	49
Chapter 8. Firmware update	50
Chapter 9. Trouble shooting	533
Chapter 10. Specification.....	544
10.1 General	
Specification.....	544
10.2 Power	
Specification.....	555
10.3 SDI video input and output scaling condition.....	55
10.4 Compatibility between Dual link DVI In/Output cards and another In/Output.....	546
10.5 Compatibility between DisplayPort In/Output cards and another In/Output.....	546
Chapter 11. Warranty Information	577
Chapter 12. Safety Instructions	588
Chapter 13. Maintenance	59

Chapter 1. Introduction and installation

Purpose

The modular matrix, OMM-2500 enables to connect between various video sources and displays and it offers flexible installation with other video controllers or control software. The input and output cards are composed of 4 ports, therefore user can easily configures any input and output channels from 4x4 to 32x32 by plugging the cards into OMM-2500 mainframe.

Introduction

The OMM-2500 modular matrix enables to switch up to 32 different DVI, HDMI, SDI, and DisplayPort sources to 32 different digital displays. It can be configured using 8 input and output cards and each card has 4 ports of input and output. In case of Dual link DVI card (DDVI-2EI / DDVI-2EO), it is composed of 2 ports, therefore configuration for input and output channels are from 2x2 to 16x16.

Note) SDI is not a licensed HDCP interface and if the content received from HDMI is protected by HDCP, there should be no output from the SDI slot.

1.1 Key features

- Up to 32 DVI, HDMI, SDI, and DisplayPort inputs and outputs can be configured.
- Each card has 4 input or 4 output ports and 8 cards can be fitted into input and output bays.
 - Dual link DVI supports from 2 x 2 to 16 x16 input and output.
- Has Electrical DVI, HDMI, SDI, DisplayPort and Optical DVI input and output cards.
- Provides Touch LCD and a user-friendly graphic interface.
- Complies with DDC/HDCP (Electrical DVI and HDMI cards only).
- Supports up to WUXGA (1920x1200) at 60Hz refresh ratio for Single link DVI, WQXGA (2560x1600) at 60Hz refresh ratio for Dual link DVI and DisplayPort or 1080p at 60Hz for HDMI and SDI.
- Supports 4 types of EDID management:
 - Default Mode.
 - Auto Detect Mode.
 - Output Copy Mode.
 - Resolution List Mode.
- Supports various control methods:
 - Touch control operation

- Key buttons operation
- Command input (Such as Hyper terminal by RS-232 and Telnet by TCP/IP)
- Web panel control (TCP/IP)
- PC program by RS-232 and UDP
- Works with OPTICIS DVI, HDMI, SDI, and DisplayPort optical extender for long signal extension.
- Has dual-power supplier for hot-swappable and load-sharing.
- Equips multi-viewer card to be used in various monitoring systems.
- Provides Preset mode to save and load the current routings.
- Provides diagnostic function for quick trouble shooting.
- Has video generator output and monitoring output for easy installation.

1.2 Shipping group

- OMM-2500, Modular matrix chassis: 1 EA
- Input / output cards: Option
 - SDVI-4EI, 4 ports electrical Single link DVI input card
 - SDVI-4EO, 4 ports electrical Single link DVI output card
 - DDVI-2EI, 2 ports electrical Dual link DVI input card
 - DDVI-2EO, 2 ports electrical Dual link DVI output card
 - SDVI-1FI, 4 ports 1 fiber optical DVI input card
 - SDVI-1FO, 4 ports 1 fiber optical DVI output card
 - HDMI-4EI, 4 ports electrical HDMI input card
 - HDMI-4EO, 4 ports electrical HDMI output card
 - SDI-4EI, 4 ports electrical SDI input card
 - SDI-4EO, 4 ports electrical SDI output card
 - DP1-4EI, 4 ports electrical DisplayPort input card
 - DP1-4EO, 4 ports electrical DisplayPort output card
 - QDVI-O, Multi-viewer card
- AC power cord: 1EA
- Power supplier: 1 EA (Dual power supplier is an option)
- User manual: 1 EA
- Firmware download cable: 1 EA (Use only this accessory specified by the manufacturer)
- RS-232 cable (Straight type): 1 EA

1.3 Notice of safe usage

We recommend you to read following warning, precaution and information before start to operate the OMM-2500 modular matrix.

- Use of the equipment in a manner not specified by the manufacturer may result in irrecoverable damage.
- Keep the unit away from liquid, magnetic and combustible substances.
- Do not place heavy weight on the unit.
- Move away from noisy environment such as vibration or impact.
- Do not install the unit vertically. / Do not disassemble the unit.
- Carry the unit using the handle in front of the panel with two (2) Users.

1.4 Physical description

The OMM-2500 modular matrix chassis is mountable on a 19" standard rack. Key buttons, LCD display and power switch are placed on the front panel as shown in Figure 1-1.



Figure 1-1 Front and Rear panel of OMM-2500

All Input and output cards, interface ports and power supplier are placed on the rear panel as below.

- **Input bay** for 4 input cards (left side)
- **Output bay** for 4 output cards (right side)
- **RS-232 / F1**, Serial communication and Main Firmware port
- **F2**, Input Firmware port
- **F3**, output Firmware port
- **LAN**, RJ-45 receptacle for TCP/IP or UDP control

- **REFERENCE OUTPUT** for internal video source for easy installation
- **MONITORING OUTPUT** for internal output port to monitor input signal
- **Power supplier** (Dual-power is an option)

1.5 Installation

1.5.1 Initialization

- Put insert the cards into each input or output bay according to user interface.
- All input or output cards have the same connection way, and tighten the screws just until snug against the main frame. Then, please make sure the cards are fully seated.
- Connect the provided AC power cord to AC power inlet. Turn on the switches at the bottom of the AC power inlet and on the front panel step by step. Then, OMM-2500 will start initialization process.
- 'Loading' will be shown on LCD display.
- After 7~10 sec, Home & State status on LCD display will be shown.
- Now, OMM-2500 is ready to receive commands from user.

1.5.2 Connection for remote control

- Connect the OMM-2500 to PC with the supplied RS-232 cable.
- Connect the OMM-2500 to PC with LAN cable with RJ-45 connector.

[NOTE] Typically, the IP address of PC connected to the network is configured by DHCP server. But, if the PC is connected directly to the OMM-2500, the network server will not able to assign the IP address. In this case, network information of PC should be set manually.

The default IP address of OMM-2500 is 192.168.1.117. Before connecting OMM-2500 to your network, please verify the availability of IP address in your network. The IP address can be reconfigured by key button, PC program or command lines over RS-232 or TCP/IP.

1.6 EDID Configuration

- EDID (Extended Display Identification Data) is an information set that is provided by a display to describe its capabilities to a graphic source. It enables a graphic source to identify the connected display.
- The information set includes: manufacturer, product type, phosphor or filter type, timings supported by the display, display size, luminance data and (for digital displays only) pixel

mapping data.

- Once the graphic source reads the information set (usually during the booting process), the EDID determines the optimal format for a connected display.
- OMM2500 supports storing of EDID information to an EEPROM for each Input.
- OMM2500 has four-way EDID settings, 1) Default Mode: default EDID from the factory, 2) Output Copy Mode: read of EDID from any target display and copy in input port 3) Auto Detect Mode: analyzing of all EDID from the attached displays and store optimized EDID in input port to avoid any compliance problems in the field and 4) Resolution List Mode: read EDID from the selected Resolution List by user and copies it in allocated input.

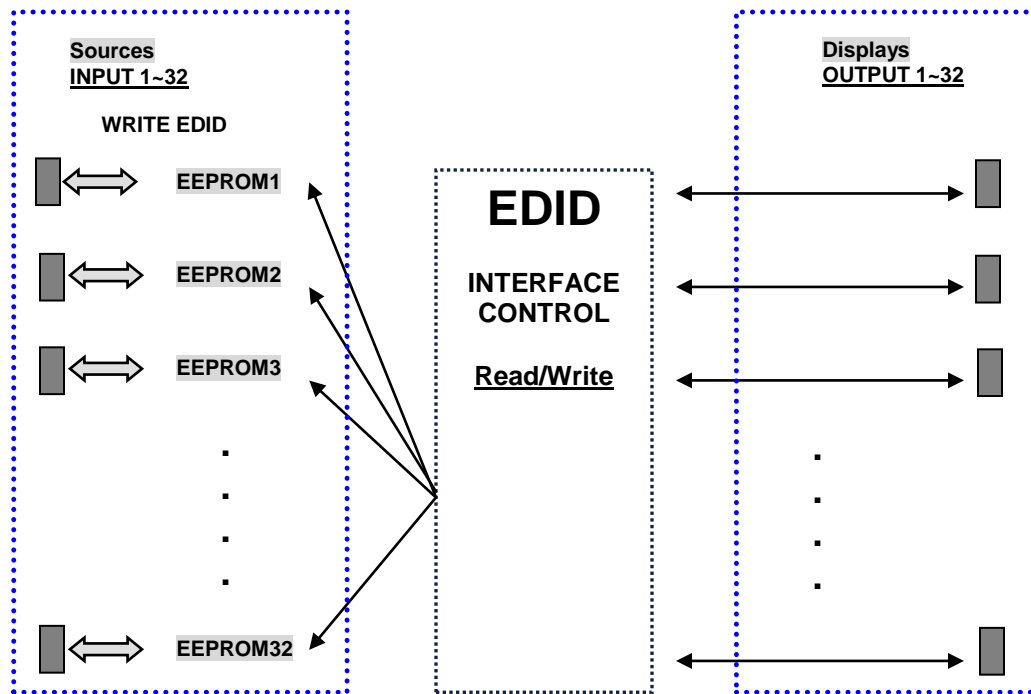


Figure 1-2 Concept of EDID setting and working in OMM-2500 modular matrix

As depicted in Figure 1-2, once EDID is configured, each EDID is stored in EEPROM in Input ports. As a result, the video sources are able to read EDID from the EEPROM during booting process even though the OMM-2500 and connected displays are not powered on yet.

Chapter 2. Control setup

The OMM-2500 modular matrix can be controlled in various ways such as command input (RS-232, TCP/IP), Web control panel (TCP/IP), supplied PC program (RS-232, UDP) as well as Touch LCD and key button on the front panel. To do this, PC should be configured properly.

2.1 TCP/IP

2.1.1 TCP/IP setup of PC

TCP/IP, the abbreviation of Transmission Control Protocol (TCP) and the Internet Protocol (IP) is commonly used protocol to control remote computers.

To control OMM-2500 over TCP/IP, set network properties of PC as below (Explained here is based on Win 7 OS).

- Open Control Panel.
- Select Network Status in Network and Internet menu.
- Select Adapter setting.
- Select Local Area Connection and right click to open property.
- Select Internet Protocol Version 4 (TCP/IPv4)
- Enter IP, Subnet mask, Gateway and DNS server address, compatible with the current network setting of OMM-2500.
- Click OK to terminate IP setup session.

[Note] If the IP address of OMM-2500 is 192.168.001.117, the PC IP address should be chosen as 192.168.001.nnn; where 'nnn' can range from 000 to 255 except 117.

2.1.2 Launching Telnet

Telnet is a terminal program embedded in Window OS system to access remote computers using TCP/IP protocol. With the network setting of the PC as above, launch Telnet as below.

- Make sure PC and OMM-2500 are connected by Ethernet.
- Click Start menu and select Run.
- Type CMD to open command window.
- Type 'telnet 192.168.1.117' (Type current IP address of OMM-2500).

- Press **ENTER** then, “==Welcome to OMM-2500==” and “== TELNET control ==” messages will be shown.
- Type command inputs to control OMM-2500. (Refer to Chap. 7)

2.2 RS-232

2.2.1 Launching HyperTerminal

The OMM-2500 modular matrix provides RS-232 serial communication. The simplest way to control OMM-2500 over RS-232 is using embedded software in Windows OS, HyperTerminal.

To launch Hyper Terminal (Explained here is based on Windows XP OS. Hyper Terminal is not available on Win 7.):

- Connect the PC to OMM-2500 over RS-232 cable.
- Select Start > Programs > Accessories > Communications > HyperTerminal.
- Enter a name and choose an icon in Connection Description window and click OK.
- In Connect To window, ignore the Country, Area Code and Phone Number fields but select available COM port of PC to be connected to OMM-2500 then, click OK.
- In COM Properties window, set the parameters as below:
 - Bits per second (baud rate): 115200 (115200 is default baud rate of OMM-2500)
 - Data bits: 8
 - Parity: None
 - Stop bits: 1
 - Flow control: None

[Note] Bit per second of Hyper Terminal should be set as same as baud rate of OMM-2500.



- Click OK to save the parameters.
- Go Start > Programs > Accessories > Communications > HyperTerminal, then new icon will be shown. Then select it to launch Hyper Terminal.
- Type command inputs to control OMM-2500 (Refer to Chap. 7)



Chapter 3. Control operation

3.1 Home & State

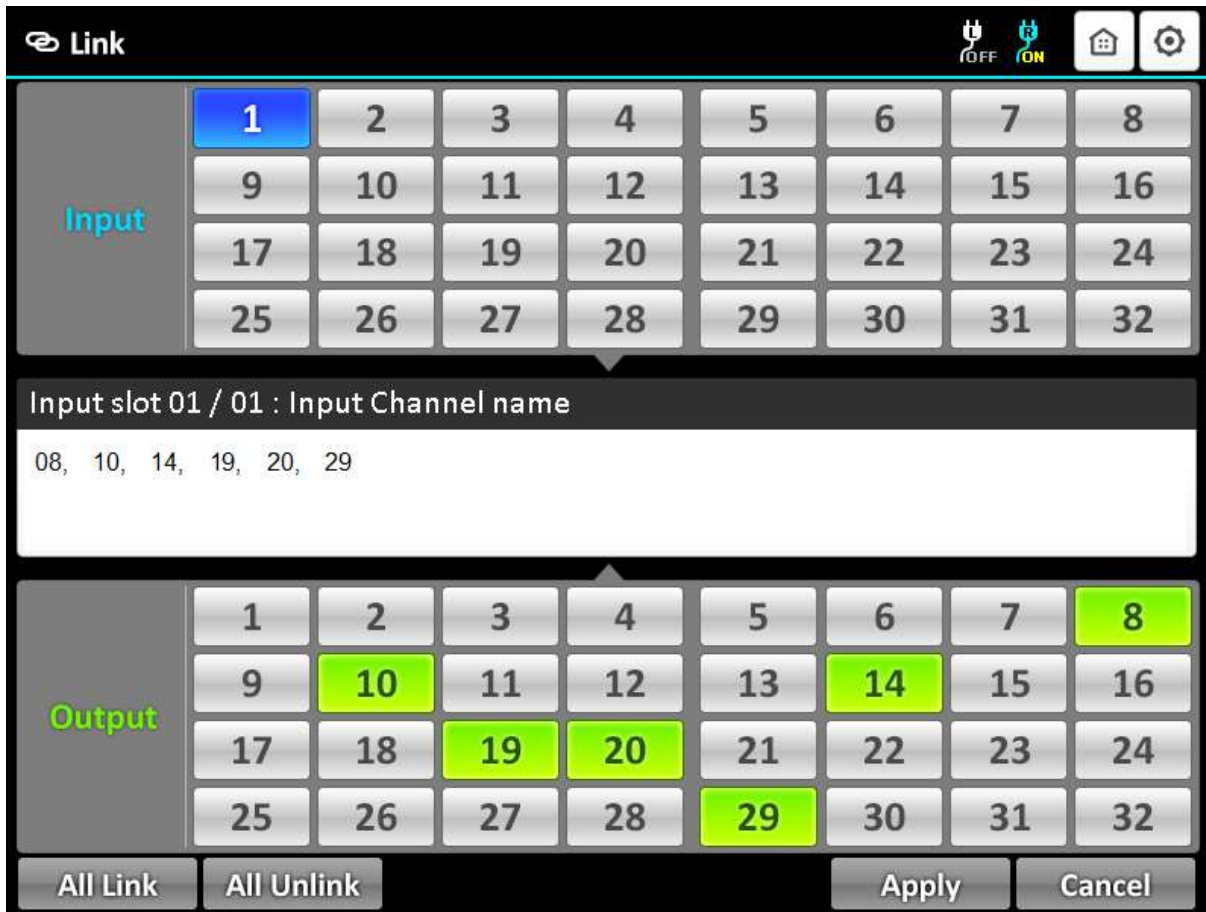



- It provides a user-friendly graphic interface showing various status, such as input/output card type, connection, power on/off, firmware version and network information.
- If the green LED of output slot number is lit ON as shown above, user can recognize the resolution of input signal (ex. CH21=800x600) and input/output connection status.
- If LED is OFF, input and output signals are not connected and it will be disable as grey color.
- Description of Icons

Section	Remark	Section	Remark
	Home & State icon	F/W MAIN	Current Firmware version
	Power Status icon	Sub-I	Current Input card Firmware version

	Link Mode icon	Sub-II	Current output card Firmware version
	Configuration Mode icon	RS232,IP	Current Network Setting status

3.2 LINK mode



- It configures input/output connections for cross-switching.
 - 1) Touch , the Link Icon.
 - 2) Touch an input channel to be designated among 32 input buttons.
 - 3) Touch single or multiple output channel(s) among 32 output buttons to be connected with display.
 - 4) Outputs can be initialized by clicking designated output button again.
 - 5) Touch Apply button to save the configuration.
 - 6) Touch the selected input button again to check current input number/channel name and connected output.
 - 7) To configure next Input / output connection, repeat from step 2 to 4.

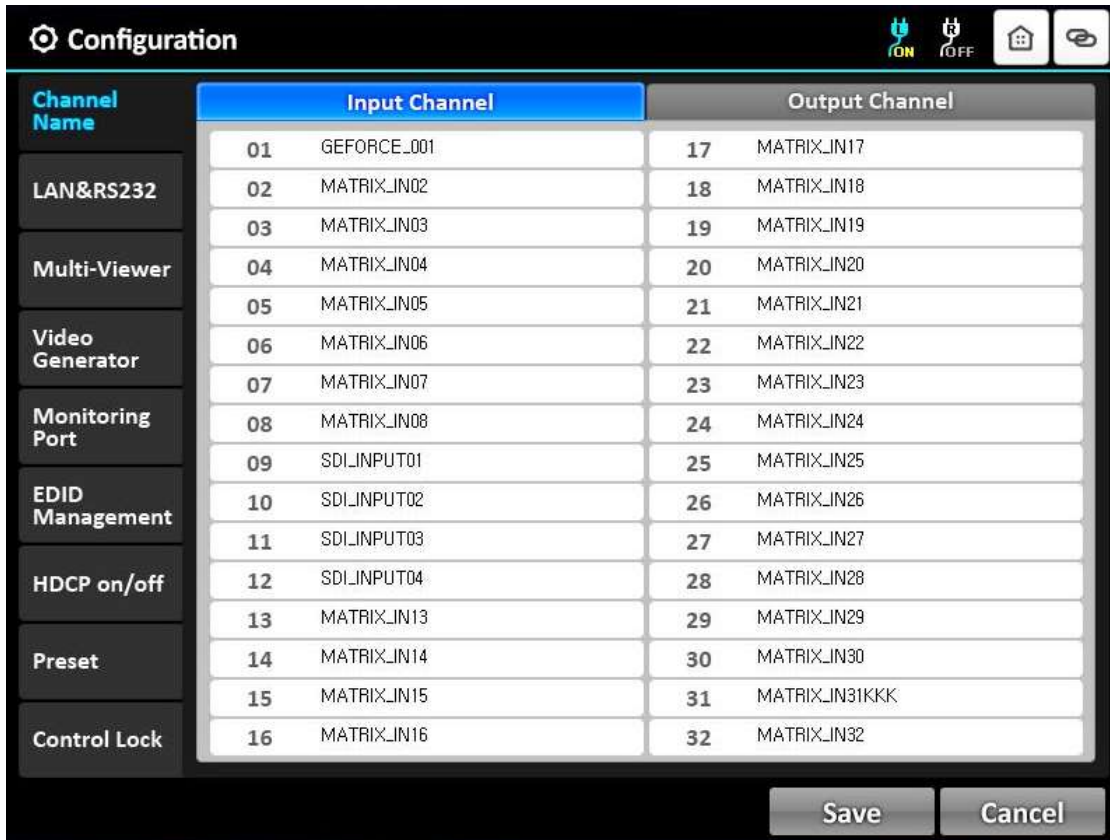
3.2.1 All Link


- It connects an input and all output connection.
 - 1) Touch All Link icon.
 - 2) Touch an input channel button to select desired input.
 - 3) Touch Apply button to save the configuration.
 - 4) Touch selected input channel again to check the connection between the selected input and connected all output.

3.2.2 All Unlink

- It unlinks connected input and output channel(s).
 - 1) Touch All Unlink button.
 - 2) Touch an input channel button to select desired input.
 - 3) Touch Apply button to save the configuration.
 - 4) Touch the selected input channel again to check an unlink state between the selected input and connected output(s).

3.3 Configuration mode



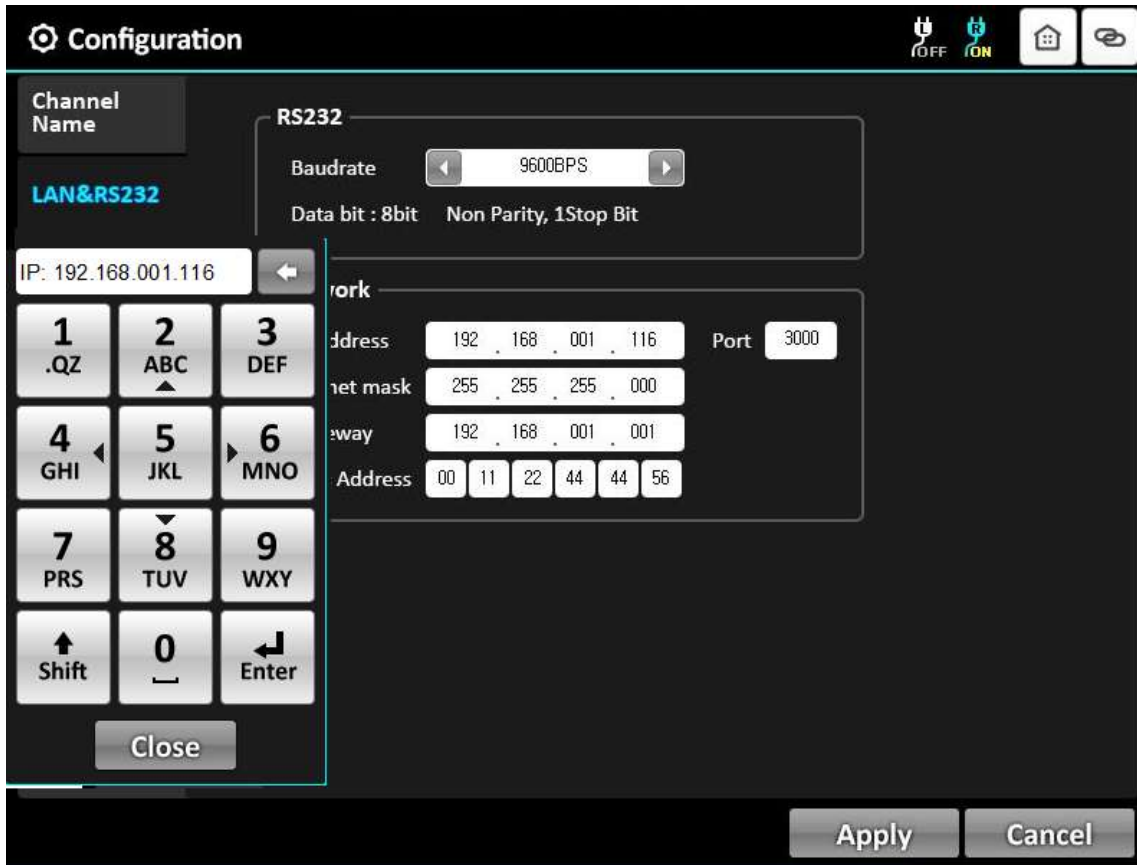
- It provides basic configuration of OMM-2500.
- Touch , configuration icon to see all features.
 - Channel Name
 - LAN & RS232
 - Multi-Viewer (It is activated when QDVI-O is in output bay)
 - Video Generator
 - Monitoring Port
 - EDID Management
 - HDCP on/off
 - Preset
 - Control Lock



3.3.1 Channel Name



- It can be allocated specific names for all inputs and outputs to distinguish them.
- Touch Input channel or Output Channel bar right next to Channel Name.
- Touch a channel bar to enter channel name.
- Then, the keypad window will be popped up.
- Touch Shift key to select a letter or number and '0' button to make a space.
- Enter a channel name using the keypad.
- Touch Enter key, then keypad will be closed.
- Touch the Save button to complete the process.

3.3.2 LAN & RS232



- 1) Baud rate:
 - It sets RS-232 Baud Rate. OMM-2500 supports 9600, 19200, 38400, 57600 and 115200bps.
 - Touch  icon to decrease Baud Rate.
 - Touch  icon to increase Baud Rate.
 - Touch Apply icon to complete the process.
 - The default setting is 115200.

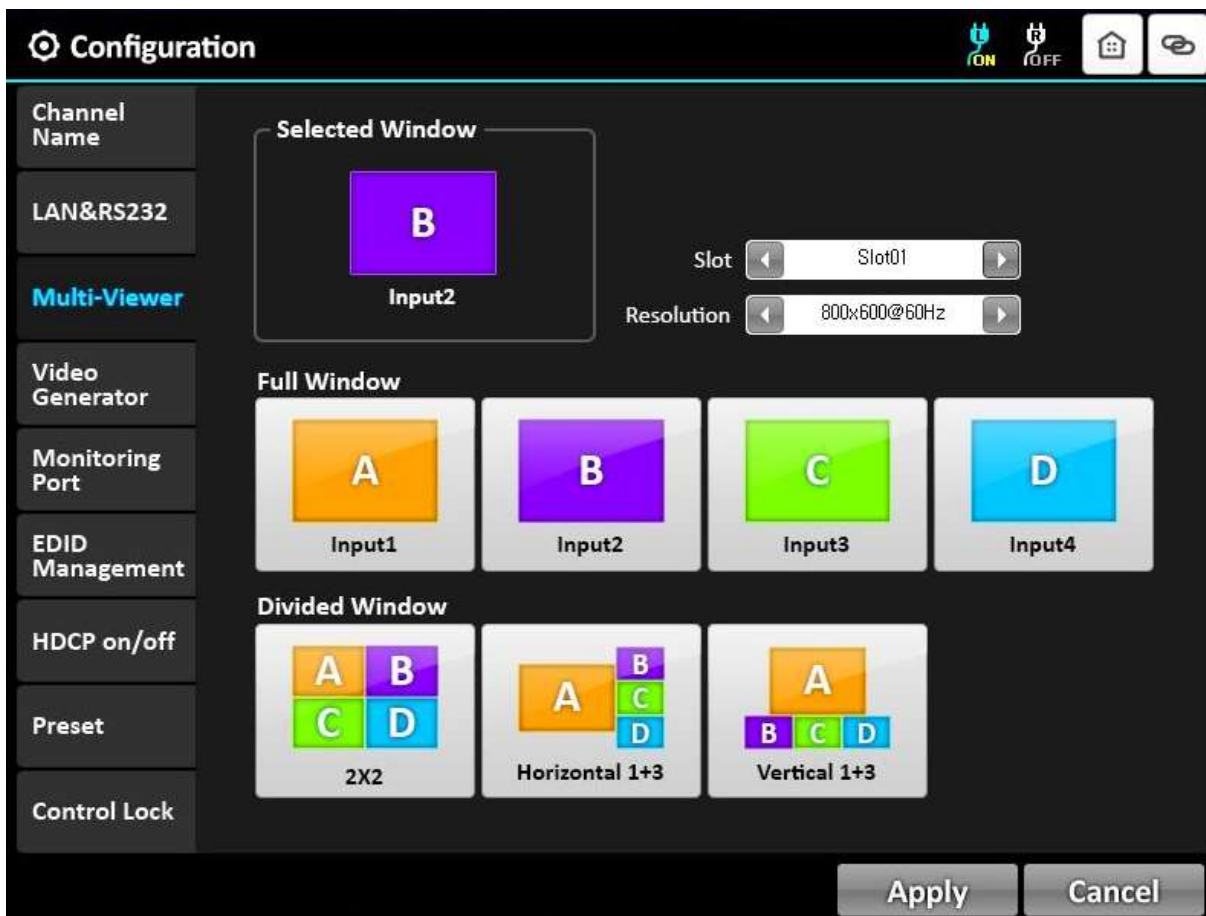
- 2) Network:
 - It modifies IP Address, Subnet mask, Gateway, Mac Address and Port to be used for your network.
 - Touch one (1) of them to modify the network setting.
 - LED shows the keypad window.
 - Touch the number key to enter desired setting.
 - Touch the Shift icon to move the next row.




- Touch the icon to modify the number.
- Touch the Enter key.
- Touch the Apply icon to save the configuration.

- The Network default setting is as below.
 - IP Address: 192.168.001.117
 - Subnet Mask: 255.255.255.000
 - Gateway: 192.168.001.001
 - UDP Port: 3000

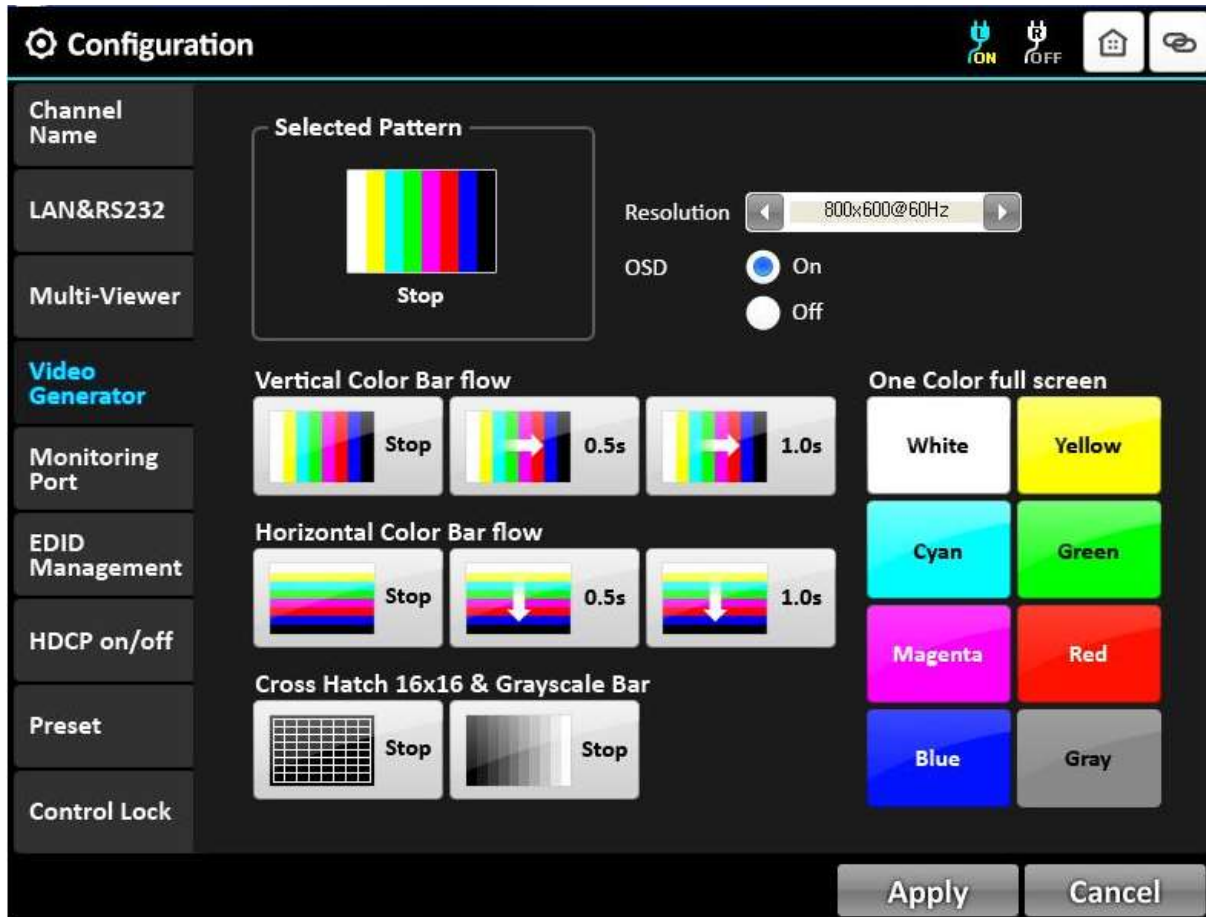
3.3.3 Multi Viewer



- The most outstanding feature of OMM-2500 is embedded multi-viewer card, QDVI-O.
- Multi-viewer card, QDVI-O can choose 4 inputs among 32 inputs of OMM-2500 and configure and output these input signals with 7 different layouts.
- Select the SLOT No. by touching the icon. It shows location where the QDVI-O is inserted among output slots. If only one QDVI-O is inserted the number will be fixed and not changed.

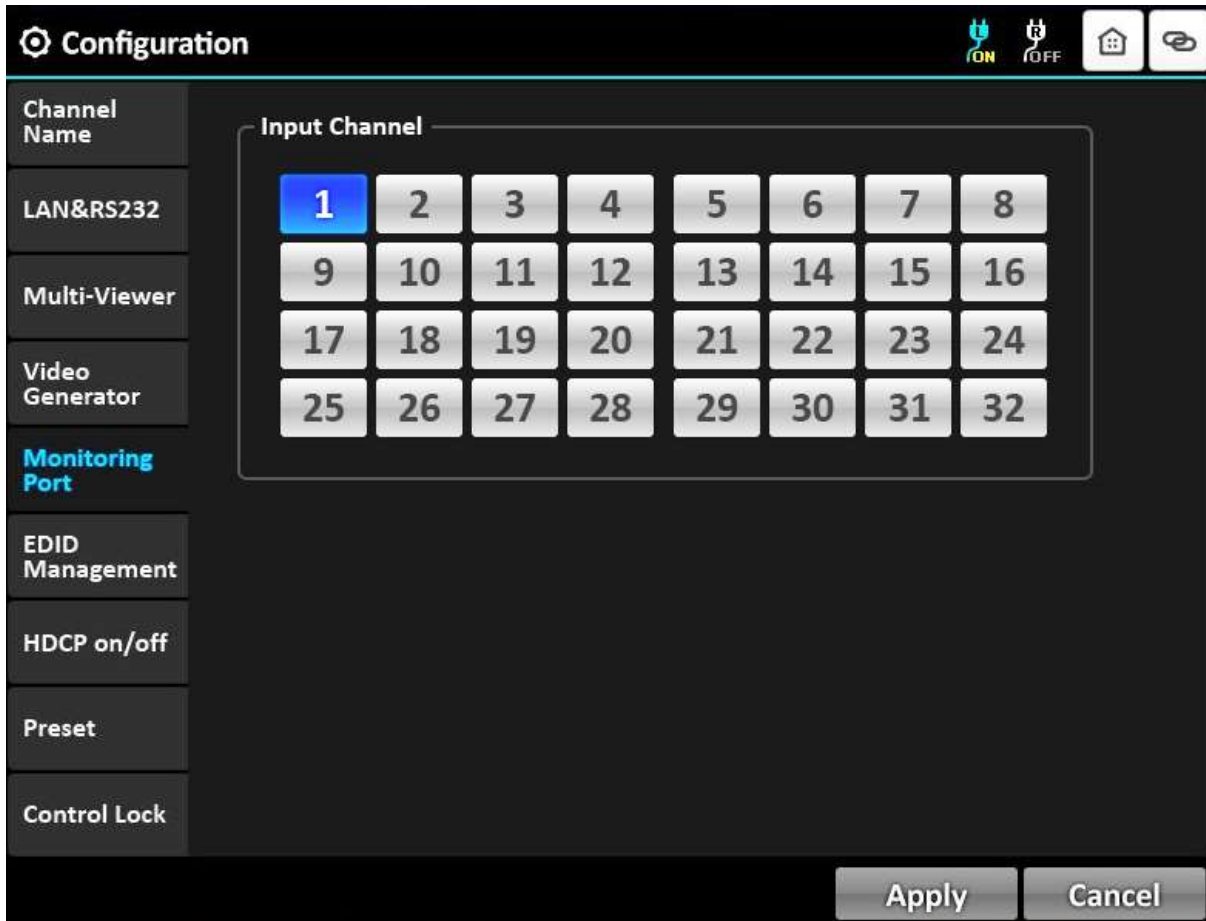
- Select the output resolution by touching  icon.
- Touch the Full Window or Divided Window icon.
- Touch the Apply icon to complete the process.

3.3.4 Video Generator



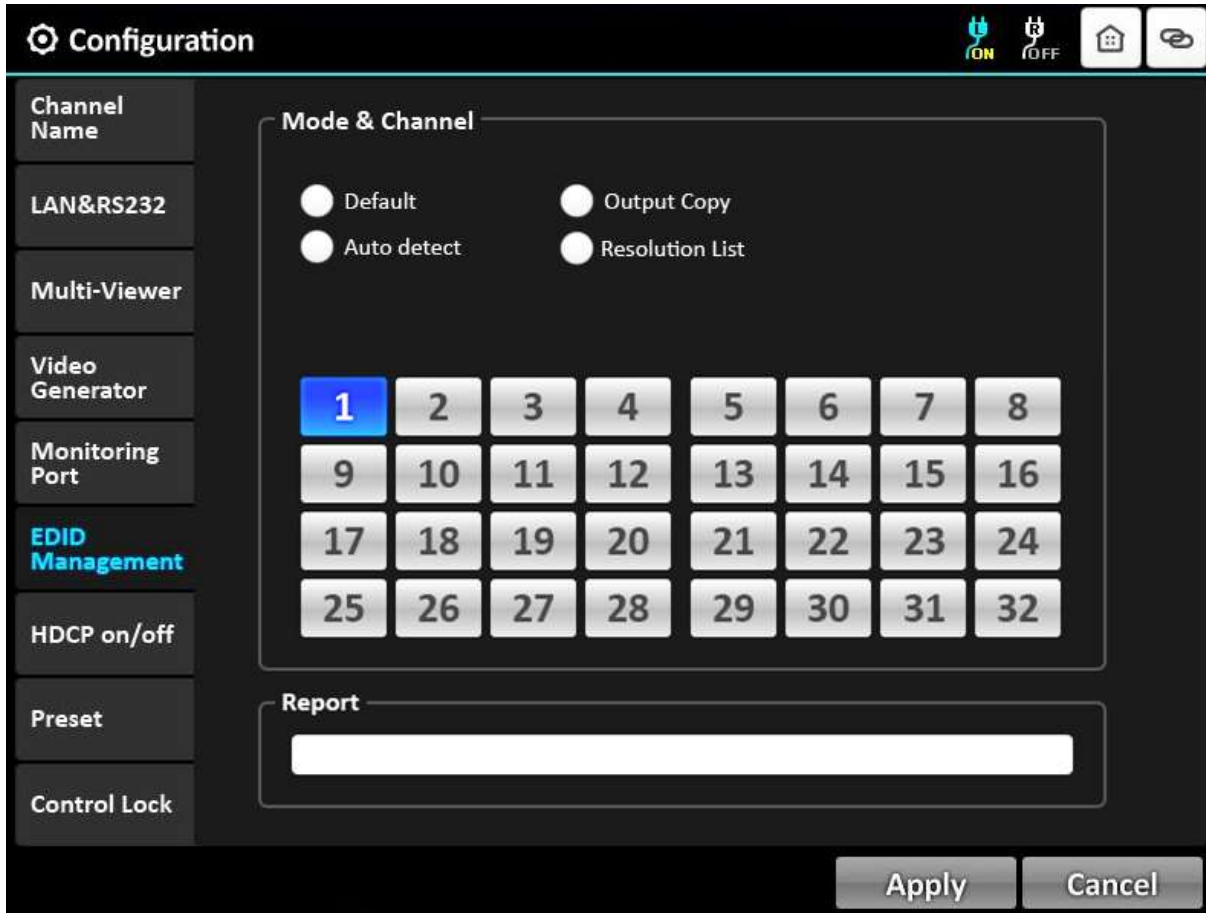
- It changes resolution and pattern of video generator.
- Select resolution or pattern and OSD by touching the icons.
- Touch Apply icon to complete the process.

3.3.5 Monitoring Port



- It allocates input to Monitor Output port for monitoring uses.
- Connect a display to the Monitoring Output port and any video sources to the DVI input ports on the real panel.
- Touch an input channel to select desired input.
- Touch the Apply icon to complete the process.

3.3.6 EDID Management



- It sets EDID information of display in input port.
- OMM-2500 supports four (4) types of EDID setting: Default Mode, Auto detect Mode, Output Copy Mode and Resolution List Mode for supporting easier installation with various displays in the field.

1) Default Mode

- It is default EDID from the factory. By selecting it, default EDID will be designated for allocated input channels.
- Check the Default icon by touch.
- Touch single or multiple input channel icons to select desired inputs
- Touch the Apply icon to complete the process.
- Start the Default EDID writing process.

Report shows the progress status. For example, if user select three (3) and four (4) input channel icons, "Default EDID Write Process Start", "Input 3: Default EDID Mode" and "Input 4:

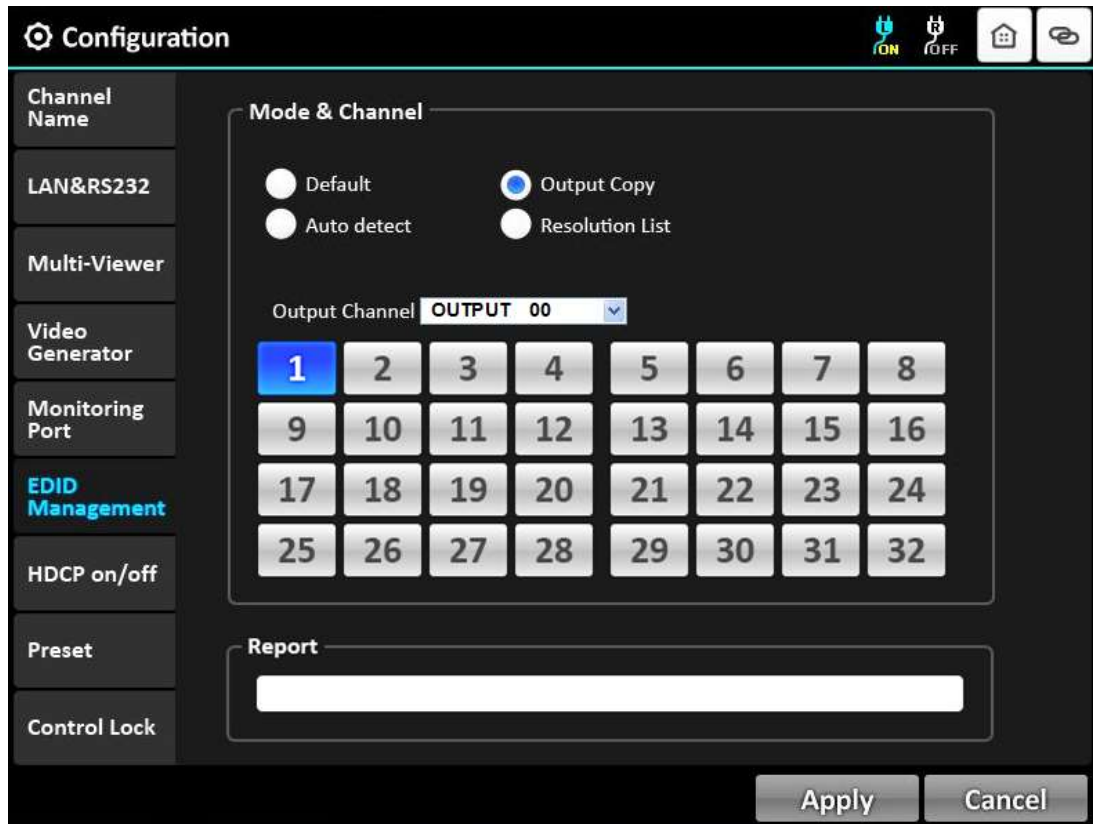
Default EDID Mode” are shown in Report box.

2) Auto detect Mode

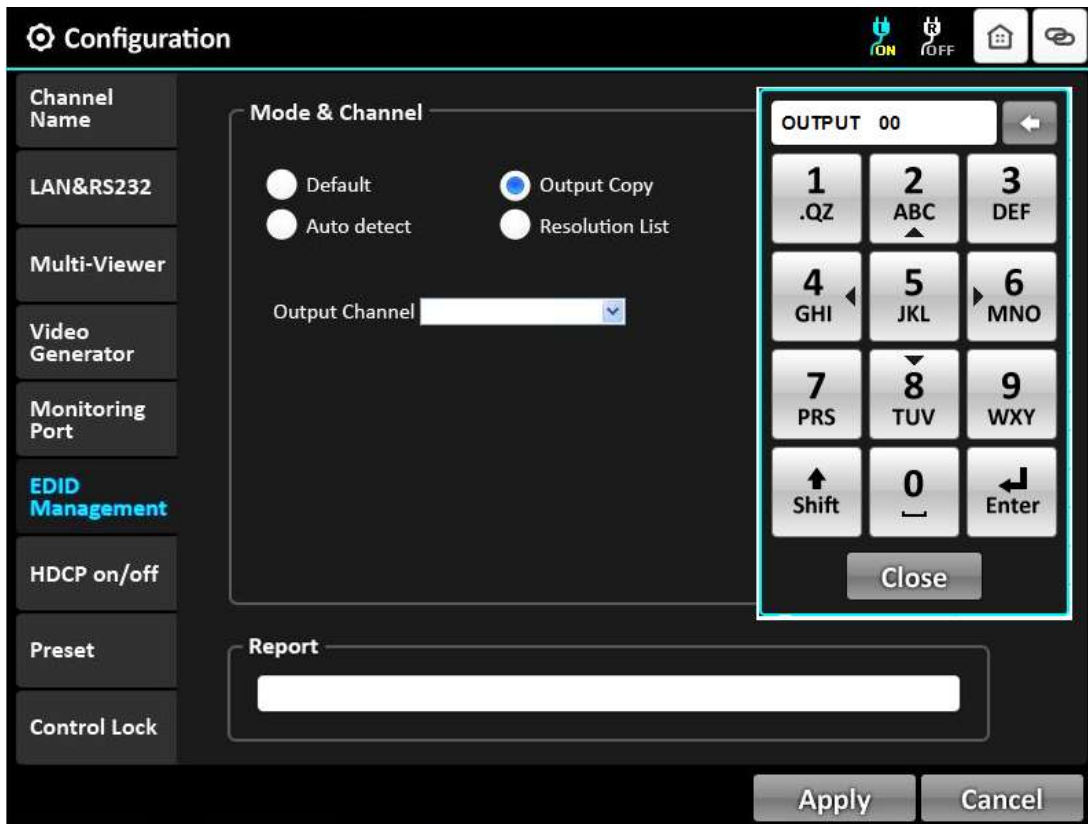
- It analyzes all EDID of attached displays at the output ports of OMM-2500 and get optimized EDID. By selecting it, user can save optimized one in allocated input.
- Touch the Auto detect icon.
- Touch single or multiple input channel icons to select desired inputs
- Touch the Apply icon to complete the process.
- Start the Auto detect EDID writing process.
- Report shows the progress status. For example, if user select nine (9) and ten (10) input channel icons, Report shows;
“AutoMix EDID Write Process Start”, “Input 9: Automix EDID Mode” and “Input 10: Automix EDID Mode”.

3) Output Copy Mode

- It reads EDID from any target display and copies it in allocated input.



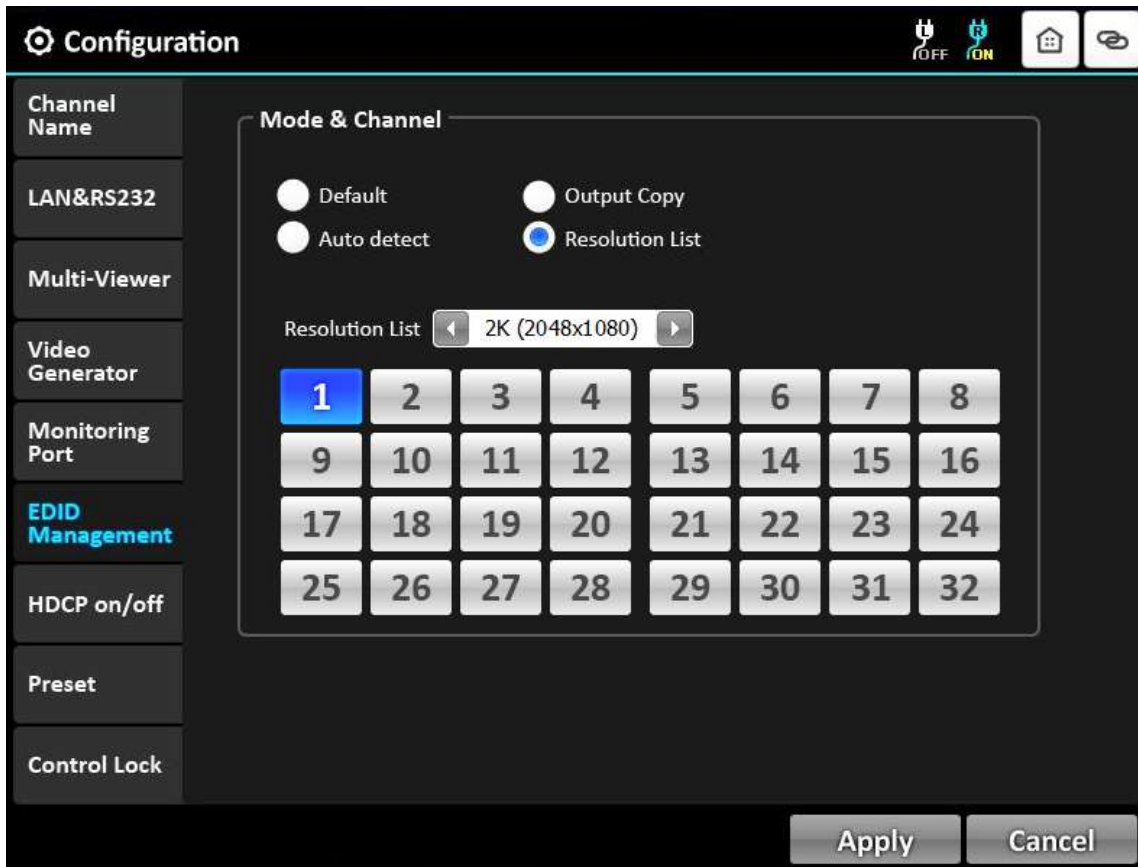
- Touch the Output Copy icon.
- Select the “OUTPUT 00” combo box right next to the Output Channel to designate output channel.




- Then, the keypad window will be shown as above.
- Enter the number of desired output channel by select number keys.
- Touch Enter and Close.
- Then, previous page with 1~32 buttons will be shown.
- Touch single or multiple input channel icons to select desired inputs.
- Touch the Apply icon to complete the process.
- Start Output EDID writing process.
- Report shows the progress status. For example, if user select one (1) output channel and nine (9), ten (10) input channel icons, Report shows step by step as below;
 “Output EDID Write Process Start”, “Output 1 Data Read Start”, “Output 1 Data Read Success!”, “Input 9: Out 30 Copy EDID Mode” and “Input 10: Out 30 Copy EDID Mode”

4) Resolution List

- It reads EDID from the selected Resolution List by user and copies it in allocated input.

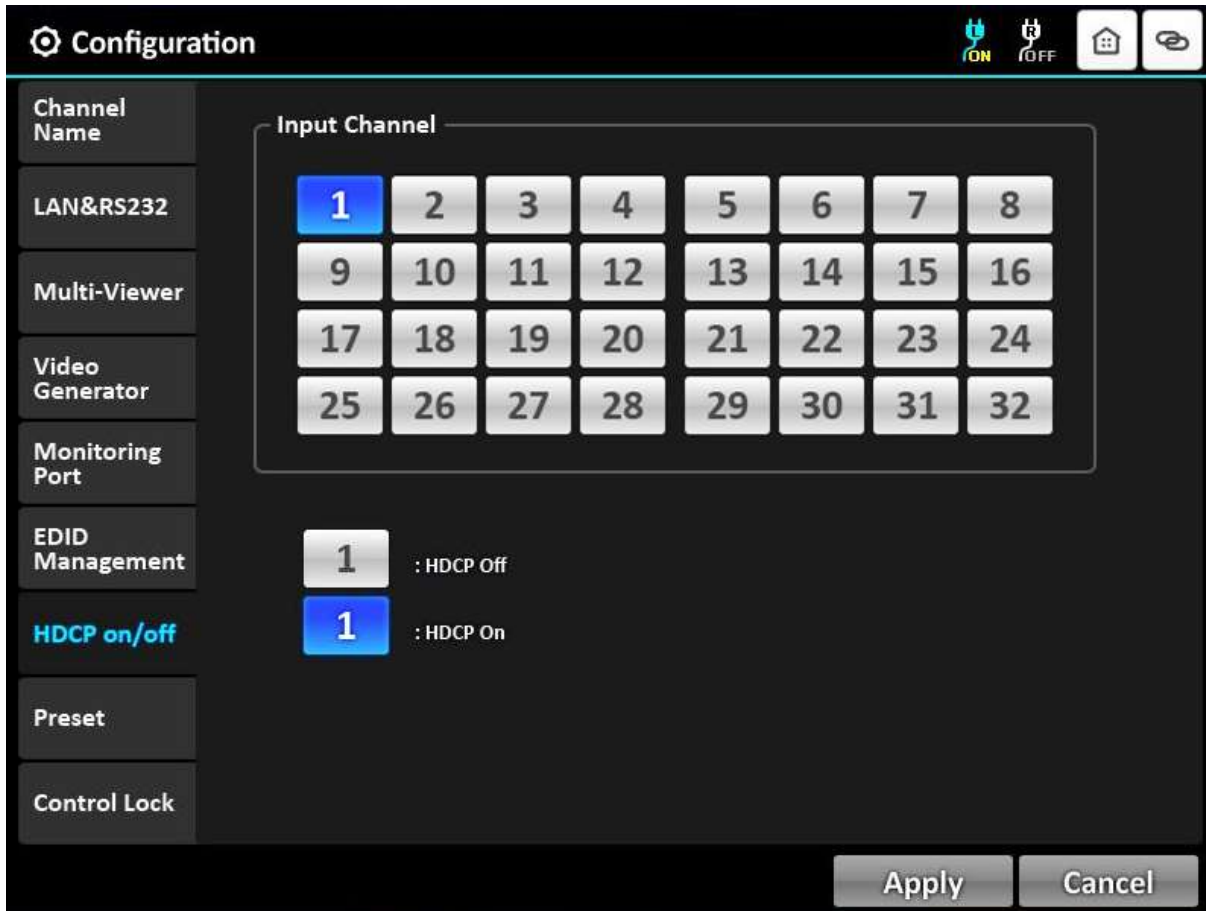


- Touch the  icon to select the desired resolution. The Resolution List is as below;

SVGA (800x600)	XGA (1024x768)	720P (1280x720)	WXGA (1366x768)	SXGAp (1400x1050)	WXGAp (1440x900)
UXGA (1600x1200)	WSXGA (1680x1050)	1080P (1920x1080)	WUXGA (1920x1200)	2K (2048x1080)	

- Touch single or multiple input channel icons to select desired inputs.
- Touch the Apply icon to complete the process.
- Start the Resolution List EDID writing process.
- Report shows the progress status.

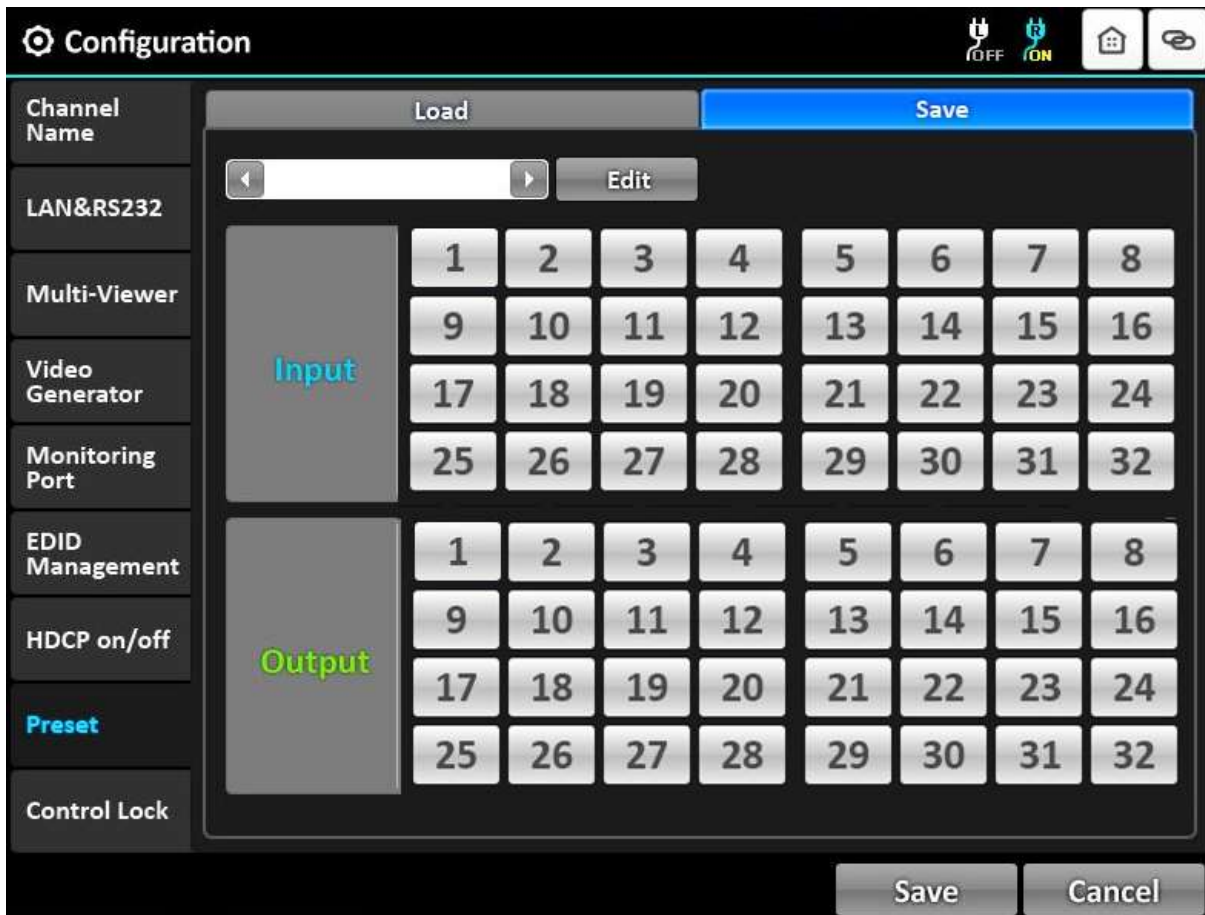
3.3.7 HDCP on/off



- User can set HDCP on/off in this menu.
- Select (Deselect) single or multiple Input Channel icons by touching.
- Touch the Apply icon to complete the process.


[Note] Only the Electrical single link DVI, Dual link DVI and HDMI cards complies with HDCP.

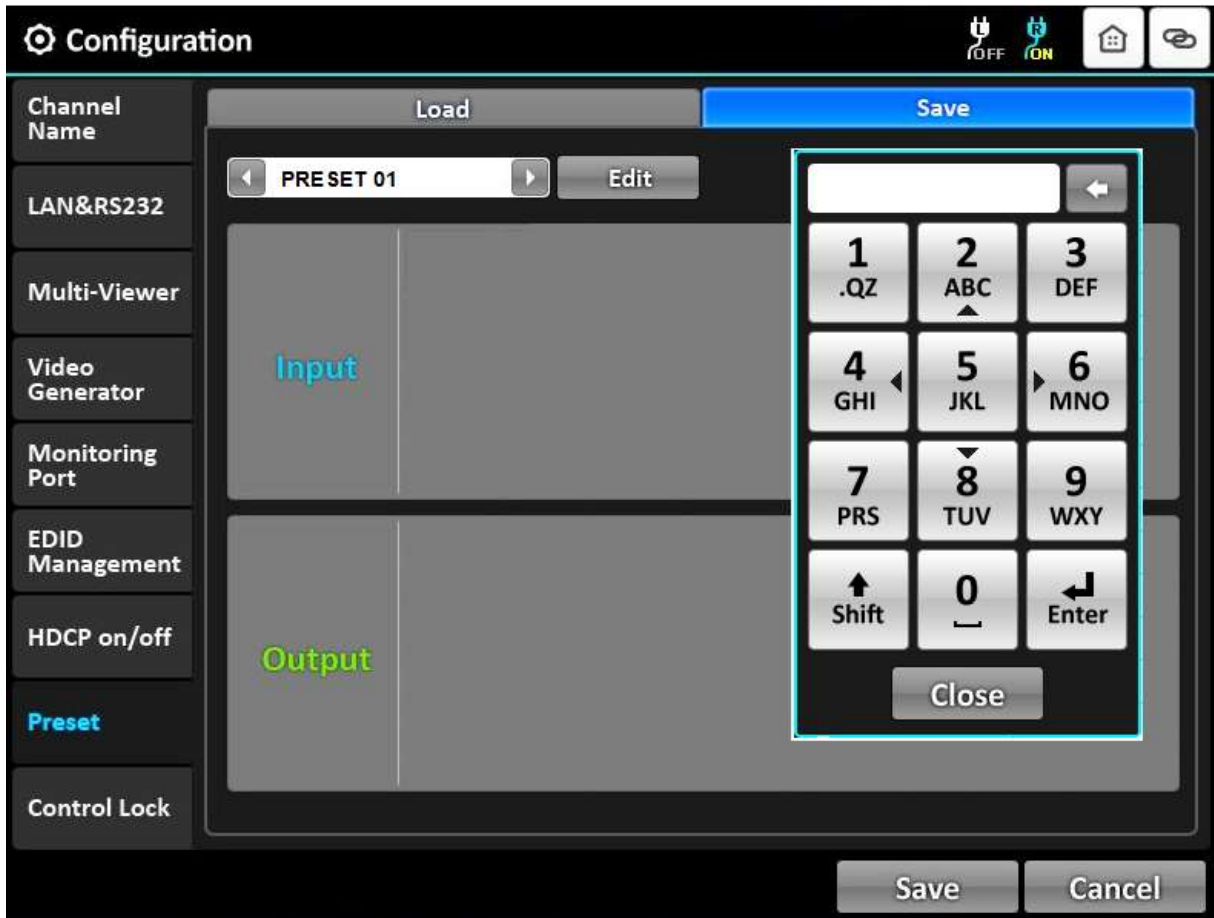
3.3.8 Preset



- It saves and loads the current routings to up to ten (10) specified preset number.

1) Preset Save mode

- Touch the Save icon.
- Touch the  icon to select desired Preset Save number.




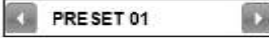
- Touch the Edit icon to modify or enter a Preset name.
- Then, key pad will be shown as above.
- Touch the Shift key to select a letter or number.
- Touch a letter or number key to enter a desired Preset name.
- Touch “0” key to make a space and enter next letter. For example, if user want to enter ‘AB’, touch “A”, “0” and “B” keys in order.
- Touch ENTER key to save the name.

- Touch an input channel icon to select desired input.
- Touch single or multiple output channel icons to select desired outputs.
- Outputs can be deselected by touching each output channel icon again.
- Touch Save icon to save the configuration.

Touch the selected input channel icon again and it shows current input / output connection

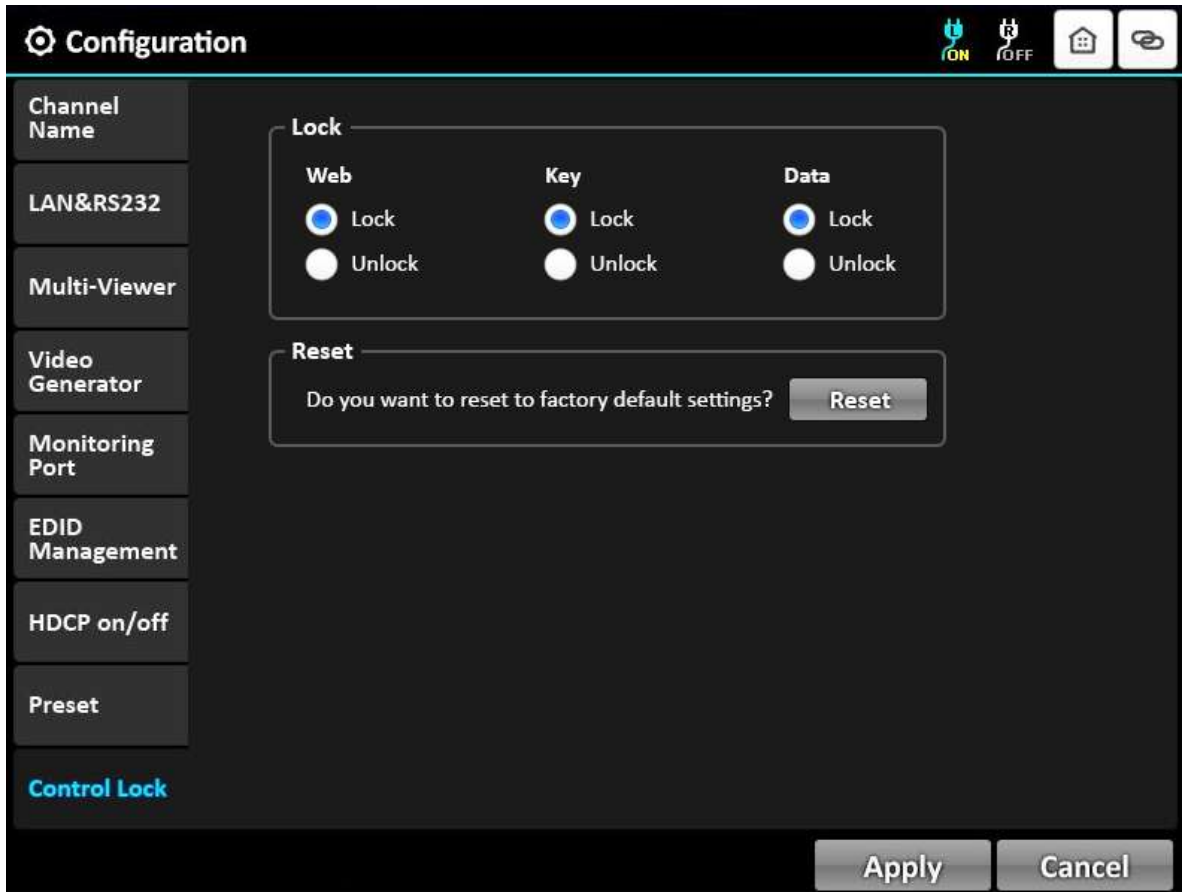
2) Preset Load mode



- Touch the Load icon.
- Touch the  icon to select desired Preset Load number.
- Touch the Load icon, next to the icon, such as  and it shows current input / output connection in the Preset Load number
- Touch the Apply icon to complete the process.

[Note] Saved input / output connection data in the Preset Save number is also saved in the Preset Load number at the same time.

3.3.9 Control Lock



- 1) Lock
 - It locks and unlocks control items such as Web, Key, RS-232, TCP/IP and UDP.
 - Select the Lock or Unlock by touching the icon.
 - Touch the Apply icon to complete the process.

- 2) Reset
 - It resets OMM-2500 by system reboot and default setting. It maintains the latest link connection and network.
 - Touch the Reset icon to complete the process.

Chapter 4. Control operation (Key button)

4.1 LINK mode

- It configures input/output connections for cross-switching.
 - 1) Press LINK key button. Then, the blue led in the both LINK key button and number key button will be turned on.
 - 2) Press an input channel key button to select desired input. To select an input channel, please press two (2) digit number such as 01, 02.. 07.
 - 3) Press ENTER key button. Then, the green led in the number key button will be turned on to select output channel(s).
 - 4) Press single or multiple output channel(s) to select desired outputs.
 - 5) Outputs can be deselected by pressing the each output key button again.
 - 6) Press ENTER key button.
 - 7) To configure next input / output connection, repeat 2 to 6.
 - 8) To save the configuration, Press LINK key button and select Apply icon on the screen.
To cancel the configuration, Press LINK key button and select Cancel icon on the screen.
 - 9) Press ENTER key button to save the configuration.

4.1.1 All Unlink

- It unlinks connected input and output channel(s).
 - 1) Press SHIFT and LINK key button step by step.
 - 2) Press an input channel key button to select desired input.
 - 3) To save the configuration, Press LINK key button and select Apply icon on the screen.
To cancel the configuration, Press LINK key button and select Cancel icon on the screen.
 - 4) Press ENTER key button to save the configuration.

4.2 Configuration mode

- It provides basic configuration of OMM-2500.
- Press FUNC key button and select the mode as below.
 - Channel Name
 - LAN & RS232
 - Multi-Viewer (It is activated when QDVI-O is in output bay)
 - Video Generator
 - Monitoring Port
 - EDID Management
 - HDCP on/off
 - Preset
 - Control Lock

4.2.1 Channel Name

- It can be allocated specific names for all inputs and outputs to distinguish them..
 - 1) Press FUNC key button to select Channel Name icon.
 - 2) Press ENTER key button.
 - 3) Press an input channel key button to enter desired channel name.
 - 4) Press ENTER key button. Then, the keypad window will be popped up.
 - 5) Enter a channel name using the key button. If you want to enter the number, please press SHIFT key button.
 - 6) Press ENTER key button.
 - 7) To enter next input channel name, repeat 3 to 6.
 - 8) To save the channel name, Press FUNC key button and select Save icon on the screen.
To cancel the channel name, Press FUNC key button and select Cancel icon on the screen
 - 9) Press ENTER key button to complete the process.
 - 10) Press FUNC key button to move and enter an output channel name.
 - 11) To enter output channel name, repeat 3 to 9 such as input channel name.
 - 12) Press ESC key button, if you want to back to Configuration mode.

4.2.2 LAN & RS232

* Baud rate:

- It sets R-232 Baud Rate. OMM-2500 supports 9600, 19200, 38400, 57600 and 115200bps.
 - 1) Press FUNC key button to select LAN & RS232 icon.
 - 2) Press ENTER key button.
 - 3) Press number 4 key button to decrease Baud Rate.
 - 4) Press number 6 key button to increase Baud Rate.

- The default setting is 115200.

* Network:

- It modifies IP Address, Subnet mask, Gateway, Mac Address and Port to be used for your network.
 - 1) Select the network using FUNC key button.
 - 2) Press ENTER key button. Then, the keypad window will be popped up.
 - 3) Press the number key button to enter the desired number.
 - 4) Press SHIFT key button to move the next row.
 - 5) Press ENTER key button.
 - 6) To save the network, Press FUNC key button and select Apply icon on the screen.
To cancel the network, Press FUNC key button and select Cancel icon on the screen
 - 7) Press ENTER key button to complete the process.

- The Network default setting is as below.
 - IP Address: 192.168.001.117
 - Subnet Mask: 255.255.255.000
 - Gateway: 192.168.001.001
 - UDP Port: 3000

- The section can be moved pressing FUNC key button.

4.2.3 Multi Viewer

- The most outstanding feature of OMM-2500 is embedded multi-viewer card, QDVI-O.
- Multi-viewer card, QDVI-O can choose 4 inputs among 32 inputs of OMM-2500 and configure and output these input signals with 7 different layouts.
 - 1) Press FUNC key button to select Multi-viewer icon.
 - 2) Press ENTER key button.
 - 3) Select the section using FUNC key button.
 - 4) Press number 4 and 6 key button to select the desired type.
 - 5) To save the type, Press FUNC key button and select Apply icon on the screen.
To cancel the type, Press FUNC key button and select Cancel icon on the screen.
 - 6) Press ENTER key button to complete the process.

4.2.4 Video Generator

- It changes resolution and pattern of video generator.
 - 1) Press FUNC key button to select Video generator icon.
 - 2) Press ENTER key button.
 - 3) Select the section using FUNC key button.
 - 4) Press number 4 and 6 key button to select the desired type.
 - 5) To save the type, Press FUNC key button and select Apply icon on the screen.
To cancel the type, Press FUNC key button and select Cancel icon on the screen.
 - 6) Press ENTER key button to complete the process.

4.2.5 Monitoring Port

- It allocates input to Monitor Output port for monitoring uses.
- Connect a display to the Monitoring Output port and any video sources to the DVI input ports on the real panel.
 - 1) Press FUNC key button to select Monitoring Port icon.
 - 2) Press ENTER key button.
 - 3) Press an input key button to monitor desired input channel.
 - 4) To save the monitoring port, Press FUNC key button and select Apply icon on the screen.
To cancel the monitoring port, Press FUNC key button and select Cancel icon on the screen.
 - 5) Press ENTER key button to complete the process.

4.2.6 EDID Management

- It sets EDID information of display in input port.
- OMM-2500 supports four (4) types of EDID setting: Default Mode, Auto detect Mode, Output Copy Mode and Resolution List Mode for supporting easier installation with various displays in the field.
- The modes can be saved at the same time after selecting each mode.

* Default Mode

- It is default EDID from the factory. By selecting it, default EDID will be designated for allocated input channels.
 - 1) Press FUNC key button to select EDID Management icon.
 - 2) Press ENTER key button.
 - 3) Select the section using FUNC key button.
 - 4) Press single or multiple input channel key buttons to select desired inputs
 - 5) To save the Default Mode, Press FUNC key button and select Apply icon on the screen.
To cancel the Default Mode, Press FUNC key button and select Cancel icon on the screen.
 - 6) Press ENTER key button to complete the process.
 - 7) Start the Default EDID writing process.

Report shows the progress status. For example, if user select three (3) and four (4) input channel icons, “Default EDID Write Process Start”, “Input 3: Default EDID Mode” and “Input 4: Default EDID Mode” are shown in Report box.

* Auto detect Mode

- It analyzes all EDID of attached displays at the output ports of OMM-2500 and get optimized EDID. By selecting it, user can save optimized one in allocated input.
 - 1) Select the section using FUNC key button.
 - 2) Press single or multiple input channel key buttons to select desired inputs
 - 3) To save the Auto detect Mode, Press FUNC key button and select Apply icon on the screen.
To cancel the Auto detect Mode, Press FUNC key button and select Cancel icon on the screen.
 - 4) Press ENTER key button to complete the process.
 - 5) Start the Default EDID writing process.

Report shows the progress status. For example, if user select nine (9) and ten (10) input channel icons, Report shows;
“AutoMix EDID Write Process Start”, “Input 9: Automix EDID Mode” and “Input 10: Automix EDID Mode”.

* Output Copy Mode

- It reads EDID from any target display and copies it in allocated input.
 - 1) Select the section using FUNC key button.
 - 2) Press ENTER key button. Then, the keypad window will be shown.
 - 3) Press output channel key button.
 - 4) Press ENTER key button. Then, the keypad window will be closed.
 - 5) Press single or multiple input channel key buttons to select desired inputs
 - 6) To save the Auto detect Mode, Press FUNC key button and select Apply icon on the screen.
To cancel the Auto detect Mode, Press FUNC key button and select Cancel icon on the screen.
 - 7) Press ENTER key button to complete the process.
 - 8) Start the Output EDID writing process.

Report shows the progress status. For example, if user select one (1) output channel and nine (9), ten (10) input channel icons, Report shows step by step as below;
 “Output EDID Write Process Start”, “Output 1 Data Read Start”, “Output 1 Data Read Success!”, “Input 9: Out 30 Copy EDID Mode” and “Input 10: Out 30 Copy EDID Mode”

* Resolution List

- It reads EDID from the selected Resolution List by user and copies it in allocated input.
 - 1) Select the section using FUNC key button.
 - 2) Press number 4 and 6 key button to select the desired resolution. The Resolution List is as below;

SVGA (800x600)	XGA (1024x768)	720P (1280x720)	WXGA (1366x768)	SXGAp (1400x1050)	WXGAp (1440x900)
UXGA (1600x1200)	WSXGAP (1680x1050)	1080P (1920x1080)	WUXGA (1920x1200)	2K (2048x1080)	

- 3) Press single or multiple input channel key buttons to select desired inputs
- 6) To save the Auto detect Mode, Press FUNC key button and select Apply icon on the screen.
To cancel the Auto detect Mode, Press FUNC key button and select Cancel icon on the screen.
- 7) Press ENTER key button to complete the process.
- 8) Start Resolution List EDID writing process.

Report shows the progress status.

4.2.7 HDCP on/off

- User can set HDCP on/off in this menu.
 - 1) Press FUNC key button to select HDCP on/off icon.
 - 2) Press ENTER key button.
 - 3) Select (Deselect) single or multiple input channel by pressing number key button.
 - 4) To save HDCP, Press FUNC key button and select Apply icon on the screen.
To cancel HDCP, Press FUNC key button and select Cancel icon on the screen.
 - 5) Press ENTER key button to complete the process.

[Note] Only the Electrical single link DVI, Dual link DVI and HDMI cards complies with HDCP.

4.2.8 Preset

- Control operation of key button is not supported Preset mode.

4.2.9 Control Lock

* Lock:

- It locks and unlocks control items such as Web, Key, RS-232, TCP/IP and UDP.
 - 1) Press FUNC key button to select Control Lock icon.
 - 2) Press ENTER key button.
 - 3) Select the section using FUNC key button.
 - 4) Press number 4 and 6 key button to select Lock or Unlock
 - 5) To save the Lock, Press FUNC key button and select Apply icon on the screen.
To cancel the Lock, Press FUNC key button and select Cancel icon on the screen.
 - 6) Press ENTER key button to complete the process.

* Reset:

- It resets OMM-2500 by system reboot and default setting. It maintains the latest link connection and network.
 - 1) Select the Reset using FUNC key button.
 - 2) Press number 4 and 6 key button to select Reset.
 - 3) To save the Reset, Press FUNC key button and select Apply icon on the screen.
To cancel the Reset, Press FUNC key button and select Cancel icon on the screen.
 - 4) Press ENTER key button to complete the process.

Chapter 5. PC program operation

The PC program with a user-friendly graphic interface is configured same as touch screen on front panel.

5.1 PC program file download and Installation

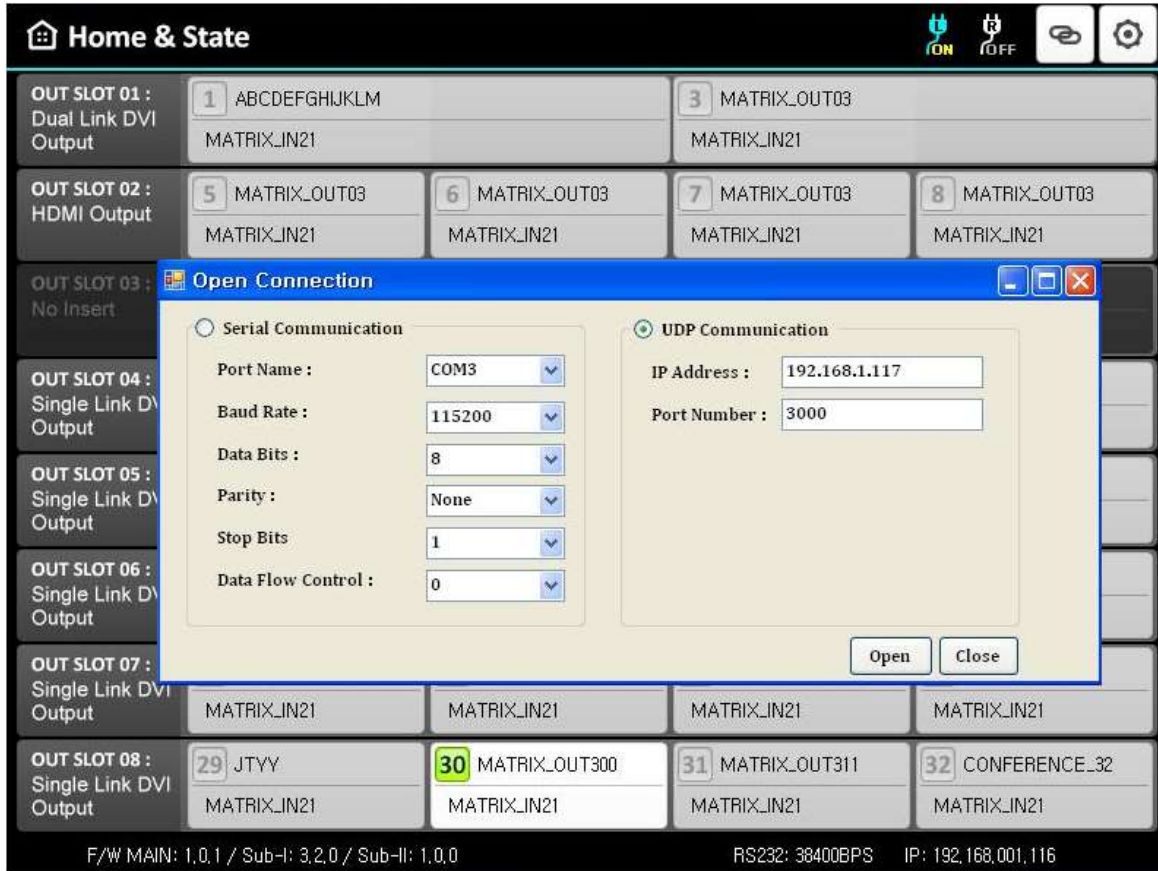
- Visit our website, www.opticis.com.
- Click PRODUCTS bar at the top of the page.
- Click Multi-format Matrix Router and OMM-2500 step by step.
- Click and download the PC program file.
- Run the setup.exe to install OMM-2500 PC program.

The OMM-2500 icon will be shown on the wallpaper. Double click it to launch PC program and will be shown as below.



Fig 5-1 PC program of OMM-2500

5.2 Connect Info



- Move the mouse cursor at the top of the black bar.
- Click the right mouse button and select “Setting” to set the control.
- Select the way of control method between RS-232 and UDP(Ethernet).
- In case of RS-232 control, enter available COM port number of your PC and select baud rate. The baud rate should be same as that OMM-2500. (115200 is default)
- In case of Ethernet, enter IP address of OMM-2500 and port number. 3000 is default port number of OMM-2500.
- Click Open button to finish the setting.
- If the connection is properly made, current status of OMM-2500 will be shown.

[NOTE] Click the right mouse button at the top of the black bar and select “Refresh” to update the current status, if it’s necessary.

[NOTE] Click the right mouse button at the top of the black bar and select “Show Log Handler” to check the current command status, if it’s necessary. Then, the Message window will be shown.

Chapter 6. Web control panel operation

The Web control panel operation provides a user-friendly graphic interface and easy access to control OMM-2500, if the PC is connected to Ethernet. But the functions are a little bit limited comparing with other methods.

The OMM-2500 supports standard web browser but Microsoft Explorer is highly recommended to run OMM-2500 stably. Before running the web browser to control OMM-2500, please confirm that Network setting of OMM-2500 and Ethernet connection of the PC (Refer to Chap 2 and Chap 3).

Launch the web browser and enter the IP address of current OMM-2500 into the URL address line. For example, if the IP address of OMM-2500 is set as 192.168.001.117, just type 192.168.1.117.

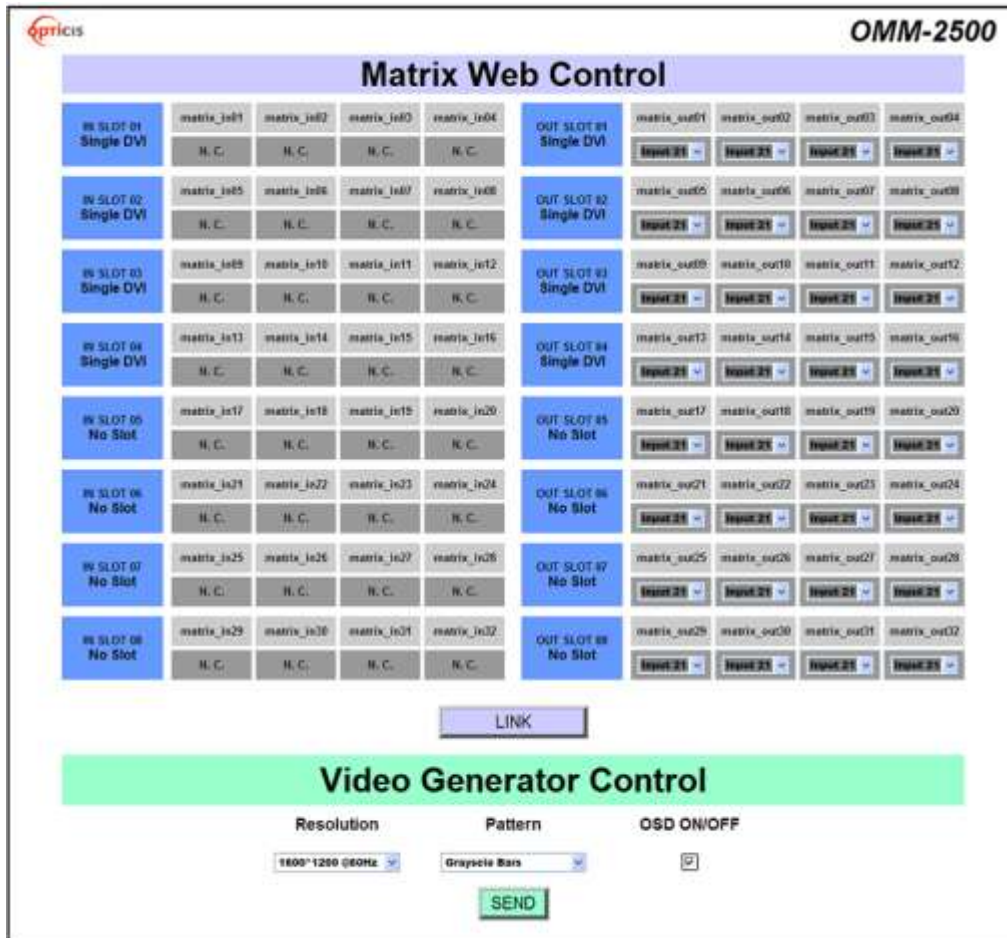


Fig 6-1 Web control panel

Fig 6-1 shows structure of Web control panel. It controls input / output connection and vide generator and informs simple input / output status. Please remind that after new input /output connection, user

has to click **LINK** button and **SEND** button for new generator setting.

Chapter 7. Command input operation

The OMM-2500 modular matrix could be operated with various interfaces such as Touch LCD, key button inputs, command input through RS-232 and TCP/IP, Web control through TCP/IP and PC program through RS-232 and UDP. All functions are executed on a basis of a serial command input, but the graphic interfaces on the Web or the PC program make more efficient way to operate the OMM-2500 modular matrix. Command input operation is accomplished through RS-232 or TCP/IP. For setting procedures for those protocols, please refer to Chap 2 and Chap 3.

7.1 Command input structure

The command inputs are composed of a string of ASCII codes and its basic structure is;

Command + Delimiter ('=') + Data + Delimiter ('^' or ',' or '_') + Data + End ('!')

Table 7.1 shows all commands and its brief descriptions

Command	Description
LINK	Input and Output connection
IN	Input signal status request
OUT	Output signal status request
INNAME	Input Channel Name Request and setting
OUTNAME	Output Channel Name Request and setting
NET	Network information request
NETGW	Gateway address setting
NETSN	Subnet mask address setting
NETIP	IP address setting
NETPA	MAC address setting
NETPT	UDP port number setting
VID	Video generator status request
VIDRES	Video generator resolution setting
VIDIMG	Video generator pattern setting
MON	Monitoring port setting and status request
EDID	EDID mode setting
HDCP	HDCP On/Off request and setting
RS232	RS-232 Baud rate request setting
QUAD	Quad-viewer card status request
QUADRES	Quad-viewer card output resolution setting
QUADLAY	Quad-viewer card layout setting
PRE	Preset Load and save
PRENAME	Preset name request and Setting
SLOT	Input output slot status request
LOCK	Lock/Unlock the control type
PWR	SMPS Power On/Off State Request
VER	MAIN In Out Firmware Version Request

Table 7.1 Commands set

- The command input allows executing only one command. Multiple command inputs require executing multiple strings having each command per a string.
- User can use capital letters and small letters for commands but cannot mix it like 'Link', it must be corrected as 'link' or 'LINK'.
- After all input commands, OMM-2500 sends back replies to conform the execution of commands.
- Input and output port number range from 1 to 32 and prefix, '0' can be used such as '001' and '010', but in the replies after the command inputs, the digits of port number are two such as '01' and '10'.

7.2 Examples of command inputs

7.2.1 Link input and output

- It makes single or multi-connections of inputs and outputs.
- It makes disconnection of all inputs when used with '0'.
- It requests inputs and outputs status of OMM-2500.

Command	Description and reply
LINK=01^10!	Makes input 1 connected to output 10. Reply: LINK=01^10!
LINK =1^03,04^7!	Makes input 1 connected to output 3 and 4 to 7. Reply: LINK =01^03,04^07!
LINK =05!	Makes input 5 connected to all outputs. Reply: LINK=05!
LINK =00!	Makes all connections disconnected. Reply: LINK =00!
LINK =00^06!	Makes output 6 disconnected. Reply: LINK =00^06!
Link=?!	Requests current inputs and outputs connections status. Reply: LINK =01^01,02^04,~32^13!

Table 7.2 Link command examples

7.2.2 Input and output status

- It requests input signal status. If the input is connected, it replies input resolution, but if it is not connected, it returns 'Signal Off'.
- It requests output status whether it is connected to display or not.

Command	Description and reply
IN=05!	Requests input 5 status. Reply: IN=[05]1920x1200p! or IN=[05]Signal Off!

OUT=12!	Requests output 12 status. Reply: OUT=[12]Un Plugged! or OUT=[12]Plugged!
---------	--

Table 7.3 Input and output status command examples

7.2.3 Input and Output Name request and setting

Command	Description and reply
INNAME=05!	Requests input 5 name Reply: INNAME=[05]MATRIX_IN05!
INNAME=05_DVDPlayer!	Setting input 5 name Reply: INNAME=[05]DVDPLAYER!
OUTNAME=12!	Requests output 12 name Reply: OUTNAME=[12]MATRIX_OUT12!
OUTNAME =12_project01!	Setting input 5 name Reply: OUTNAME =[12]PROJECT01!

Table 7.4 Input and Output Name request and setting command examples

7.2.4 Network setting

- It sets IP, Gateway, Subnet mask, MAC address and UDP port number.
- It requests current network setting.

Command	Description and reply
NETGW=192.168.1.1!	Sets Gateway address, each data ranges from 000 to 255. Reply: NETGW=192.168.001.001!
NETIP=192.168.1.118!	Sets IP address, each data ranges from 000 to 255. Reply: NETGW=192.168.001.118!
NETSN=255.255.255.0!	Sets Subnet mask address, each data ranges from 000 to 255. Reply: NETSN=255.255.255.000!
NETPA=AA.BB.CC.DD.EE.FF!	Sets MAC address, each data ranges from 00 to FF. Reply: NETPA= AA.BB.CC.DD.EE.FF!
NETPT=3000!	Sets UDP port number, data ranges from 0 to 65535. NETPT=3000!
NET=?!	Requests current network setting. Reply: NETGW=192.168.001.001! NETIP=192.168.001.118! NETSN=255.255.255.000! NETPA=AA.BB.CC.DD.EE.FF! NETPT=3000!

Table 7.5 Network setting command examples

7.2.5 Video generator setting

- It changes resolution and pattern of video generator.
- It requests current video generator setting.

Table 7.6 describes the resolutions and patterns OMM-2500 supports. By command input operation, user can change these to be used with on-site source for easy installation

Data #	Resolution	Pattern
1	800x600@60Hz	Vertical Color Bar
2	1024x768@60Hz	Vertical Color Bar scroll (Interval:0.5sec)
3	1280x960@60Hz	Vertical Color Bar scroll (Interval:1.0sec)
4	1280x1024@60Hz	Horizontal Color Bar
5	1600x1200@60Hz	Horizontal Color Bar scroll (Interval:0.5sec)
6	1920x1200@60Hz	Horizontal Color Bar scroll (Interval:1.0sec)
7	1280x720p@60Hz	Full White
8	1920x1080i@60Hz	Full Yellow
9	1920x1080p@60Hz	Full Cyan
10		Full Green
11		Full Magenta
12		Full Red
13		Full Blue
14		Full Gray
15		Cross Hatch 16x16
16		Grayscale bars

Table 7.6 Video generator resolutions and patterns

Command	Description and reply
VIDRES=4!	Sets video generator resolution by data #4. Reply: VIDRES=1280x1024@60HZ!
VIDIMG=3!	Sets video generator pattern by data #3. Reply: VIDIMG=VCOLORBAR10SMOVE!
VIDOSD=1!	Sets Video generator OSD On. Reply : VIDOSD=ON! * OSD Off is '0'
VID=?!	Requests current video generator resolution and pattern. Reply: VID=04_03_01! (it means data #4 resolution and data #3 pattern and OSD On)

Table 7.7 Video generator command examples

7.2.6 Monitor output port setting

- It makes input to connected to monitor output port.
- It requests current input port that connected to monitor output port.

Command	Description and reply
MON=13!	Makes input 13 connected to monitor output ports. Reply: MON=13!
MON=?!	Requests current input port that connected to monitor output port. Reply: MON=13!

Table 7.8 Monitor output setting command examples

7.2.7 EDID control command

- It stores EDID information in input port of OMM-2500.
- It requests current EDID setting for all input ports.

Command	Description and reply
EDID=DE1,7,15!	Default mode: Saves default EDID in input ports 1, 7 and 15. Reply: EDID=01DEF! EDID=07DEF! EDID=15DEF!
EDID=AUTO2,8,9!	Auto mix mode: Analyzes all EDID information of connected displays to makes optimized EDID then save it in input ports 2, 8 and 9. Reply: EDID=02AUTO! EDID=08AUTO! EDID=09AUTO!
EDID=OUT3_5!	Output copy mode: Copies EDID information of output 3 display and stores it in input port 5. Reply: EDID=03OUT.!
EDID=RES03_32!	Resolution EDID Mode : Save Resolution list 3 to input 32 Reply : EDID=32RES.!
EDID=?!	Requests current EDID setting for all inputs. Reply: EDID=01OUT.02AUTO03RES.~32DEF.!

Table 7.9 Monitor output setting command examples

7.2.8 HDCP On off setting

- Only the Electrical single link DVI, Dual link DVI and HDMI cards complies with HDCP.

Command	Description and reply
HDCP=32OFF!	Sets HDCP OFF Input 32 Reply: HDCP=[32]OFF! * HDCP ON is 'ON'
HDCP=?!	Requests current All Input HDCP State Reply: HDCP=01ON,02OFF,~31ON,32OFF!

Table 7.10 HDCP ON off setting command examples

7.2.9 Baud rate setting for RS-232

- It sets RS-232 baud rate. OMM-2500 supports 9600, 19200, 38400, 57600, 115200bps.
- It requests current RS-232 baud rate.

Command	Description and reply
RS232=115200!	Sets RS-232 baud rate. Reply: RS232=115200BPS!
RS232=?!	Requests current baud rate. Reply: RS232=115200BPS!

Table 7.11 Baud rate setting command examples

7.2.10 Multi-viewer card (QDVI-O) setting

- It sets output resolution and layout of QDVI-O.
- It requests current status of QDVI-O.

Data #	Resolution	Layout
1	800x600@60Hz	1 st input of QDVI-O on a full screen
2	1024x768@60Hz	2 nd input of QDVI-O on a full screen
3	1280x960@60Hz	3 rd input of QDVI-O on a full screen
4	1280x1024@60Hz	4 th input of QDVI-O on a full screen
5	1600x1200@60Hz	Quad-screen
6	1920x1200@60Hz	1 Large screen (Left side) + 3 Small screen (Right side)
7	1280x720p@60Hz	1 Large screen (Top side) + 3 small screen (Bottom side)
8	-	-
9	1920x1080p@60Hz	-

Table 7.12 Supporting resolutions and layouts of QDVI-O

The first numeric data in command line represents slot number of output bay of OMM-2500 where QDVI-O is inserted.

Command	Description and reply
QUADRES=3_9!	Sets output resolution of QDVI-O at 1920x1080P. In this case, QDVI-O is inserted in 3 rd slot of output bay. Reply: QUADRES=03_09!
QUADLAY=1_5!	Sets layout of QDVI-O as quad-screen. In this case, QDVI-O is inserted in 1 st slot of output bay. Reply: QUADLAY=01_05!
QUAD=?!	Request current status of QDVI-O. If one QDVI-O is inserted in 2 nd slot and output resolution is 1600x1200@60Hz with layout #6: Reply: QUAD=01_00_00,02_05_06,03_00_00,04_00_00!

Table 7.13 Multi-viewer card setting command examples

7.2.11 Slot status request

- It requests current cards type in input and output bay.

Data	Card type	Data	Card type
02	Single DVI input card, SDVI-4EI	12	SDI input card, SDI-4EI
03	Single DVI output card, SDVI-4EO	13	SDI output card, SDI-4EO
18	1 Fiber DVI input card, SDVI-IFI	0C	DisplayPort input card, DP1-4EI
19	1 Fiber DVI output card, SDVI-1FO	0D	DisplayPort output card, DP1-4EO
21	Multi-viewer card, QDVI-O	1A	Reserved
0A	HDMI input card, HDMI-4EI	1B	Reserved
0B	HDMI output card, HDMI-4EO	-	

Table 7.14 Card types and its data

The first numeric data in reply represents the order row of slot and second and third data represents type of input and output cards.

Command	Description and reply
SLOT=?!	<p>Requests current cards type in input and output bay. OMM-2500 has 8 rows of input and output slots. If the input output cards are configured as below:</p> <p>1st row: Single DVI input card / 1 Fiber DVI output card 2nd row: Single DVI input card / Multi-viewer card 3rd row: 1 Fiber DVI input card / Single DVI output card 4th row: 1 Fiber DVI input card / NO output card</p> <p>Reply: SLOT=01_02_19! SLOT=02_02_21! SLOT=03_18_03! SLOT=04_18_00!</p>

Table 7.15 Slot status request command example

7.2.12 Control lock command

- It locks and unlocks the controls such as Web, RS-232, TCP/IP and UDP.
- It request open status of controls.

ASCII	Description
WL	Web control lock
WUL	Web control unlock
DL	Data control (UDP, TCP/IP, RS-232) lock
DUL	Data control (UDP, TCP/IP, RS-232) unlock
KL	Key control lock
KUL	Key control unlock

Table 7.16 Locking type and its ASCII data

Command	Description and reply
LOCK=DL!	Locks data control.

	Reply: LOCK=DL!
LOCK=?!	Request current status of control method. Reply: LOCK=WUL,DUL,KUL!

Table 7.17 Control lock command examples

7.2.13 Preset Control Command

- It saves routings under a preset number
- It requests current Preset mode setting.
- It changes the name and reads the Preset status.
-

Command	Description and reply
PRE=SAVE<Preset Number>!	Requests to save the current routings under the preset number selected. Reply: PRE=SAVE<Preset Number>_<link state>! Example: Send: PRE=SAVE01! Reply: PRE=SAVE01_00^01,00^02,00^03,00^04.....00^32! (04^04 indicates input 4 linked to output 4. Input 00 indicates no link set for the output)
PRE=LOAD<Preset Number>!	Requests to load the saved preset number. Reply: PRE=LOAD<Preset Number>_<link state>! Example: Send: PRE=LOAD01! Reply: PRE=LOAD01_00^01,00^02,00^03,00^04.....00^32!
PRE=?!	Request Preset Information Example : Send : PRE=?! Reply : PRE=TAB01_01^01,02^02,~31^31,32^32! PRE=TAB02_01^01,02^02,~31^31,32^32! PRE=TAB03_01^01,02^02,~31^31,32^32! ~~ PRE=TAB10_01^01,02^02,~31^31,32^32!
PRENAME=<Preset Number>!	Request Preset Name Example : Send : PRENAME=02! Reply : PRENAME=[02]PRENUMBER02!
PRENAME=<Preset Number>_<Preset Name>!	Setting Preset Name Example : Send : PRENAME=02_MeetRomm! Reply : PRENAME=[02]MeetRomm!

Table 7.18 Preset control command examples

7.2.14 Power State Request

- It requests current status of SMPS Power On / Off.

Command	Description and reply
PWR=?!	Request SMPS OnOff State Reply: PWR=L_ON,R_OFF! Left SMPS On, Right SMPS Off

Table 7.19 Power State Request command examples

7.2.15 Firmware Version Request

Command	Description and reply
VER=?!	Request Firmware Version Reply: VER=M_100,I_100,O_100! Main Version : 1.0.0 Input Version : 1.0.0 Output Version : 1.0.0

Table 7.20 Firmware Version Request command examples

Chapter 8. Firmware update

OMM-2500 has three-way Firmware settings, 1) Main Firmware, 2) Input Firmware, 3) Output Firmware. All Firmware ports are placed on the VGEXT of the rear panel.

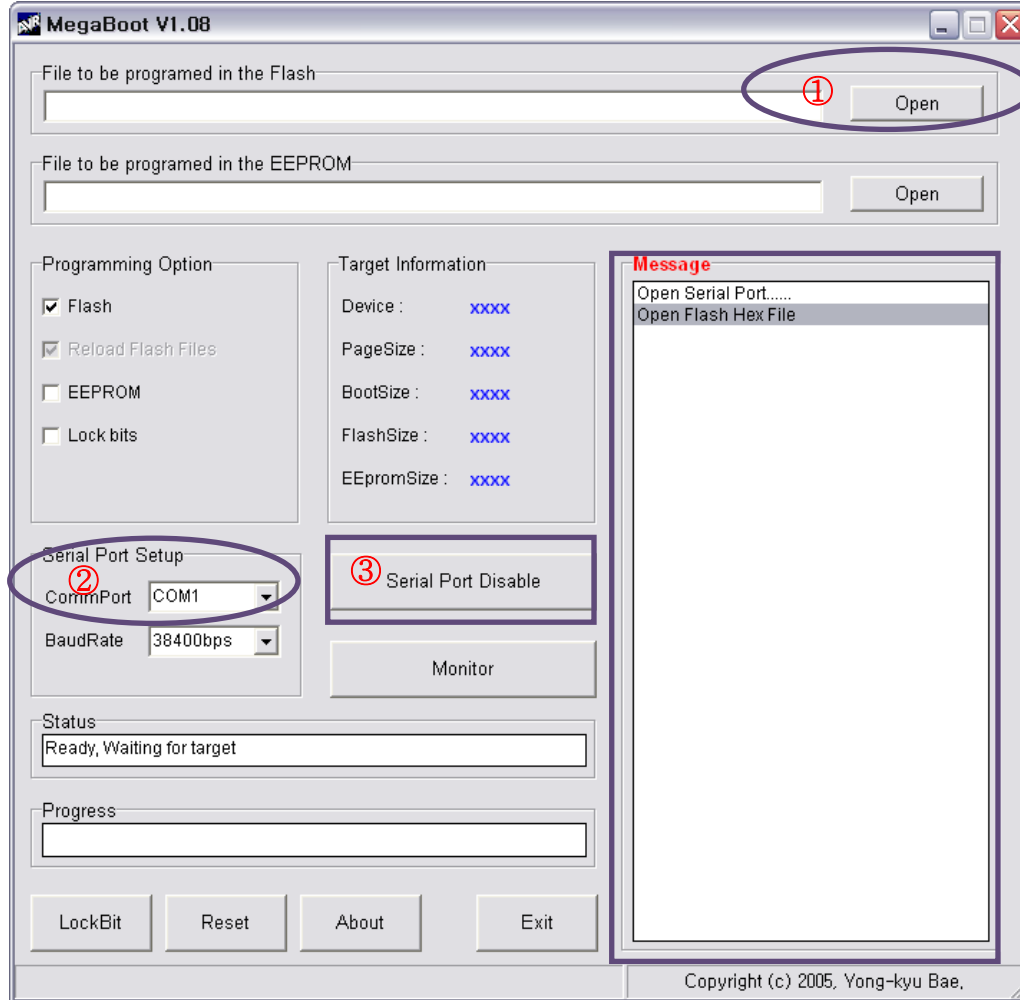
- **RS-232 / F1 port** for Main Firmware: Use a supplied download cable, RS-232
- **F2 port** for Input Firmware: Use a supplied download cable, RJ11 to RS-232
- **F3 port** for Output Firmware: Use a supplied download cable, RJ11 to RS-232



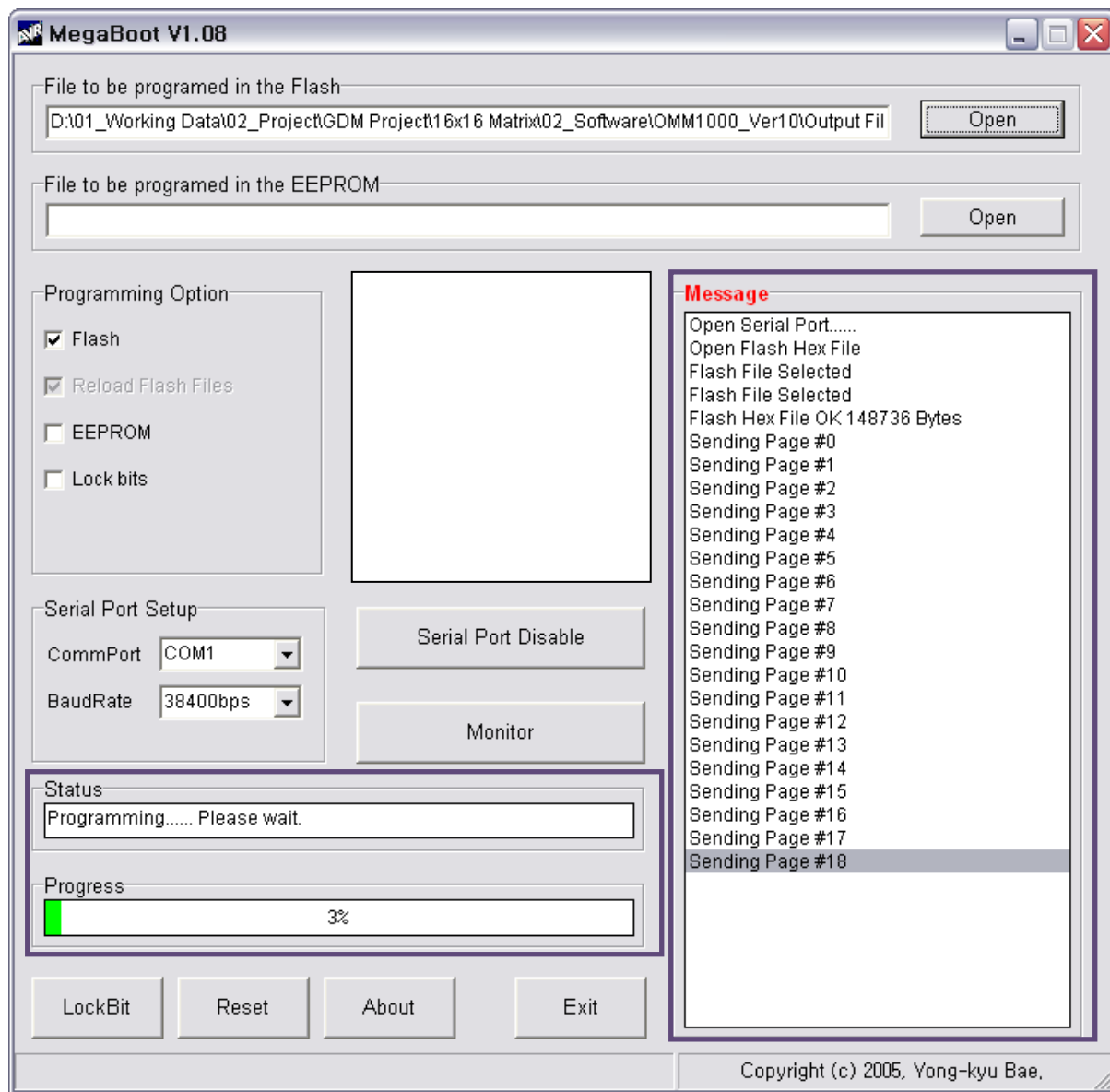
1. Please install **Megaboot.exe** under Windows XP OS.

[Note] Megaboot.exe can't be installed under Windows 7 and Vista OS.

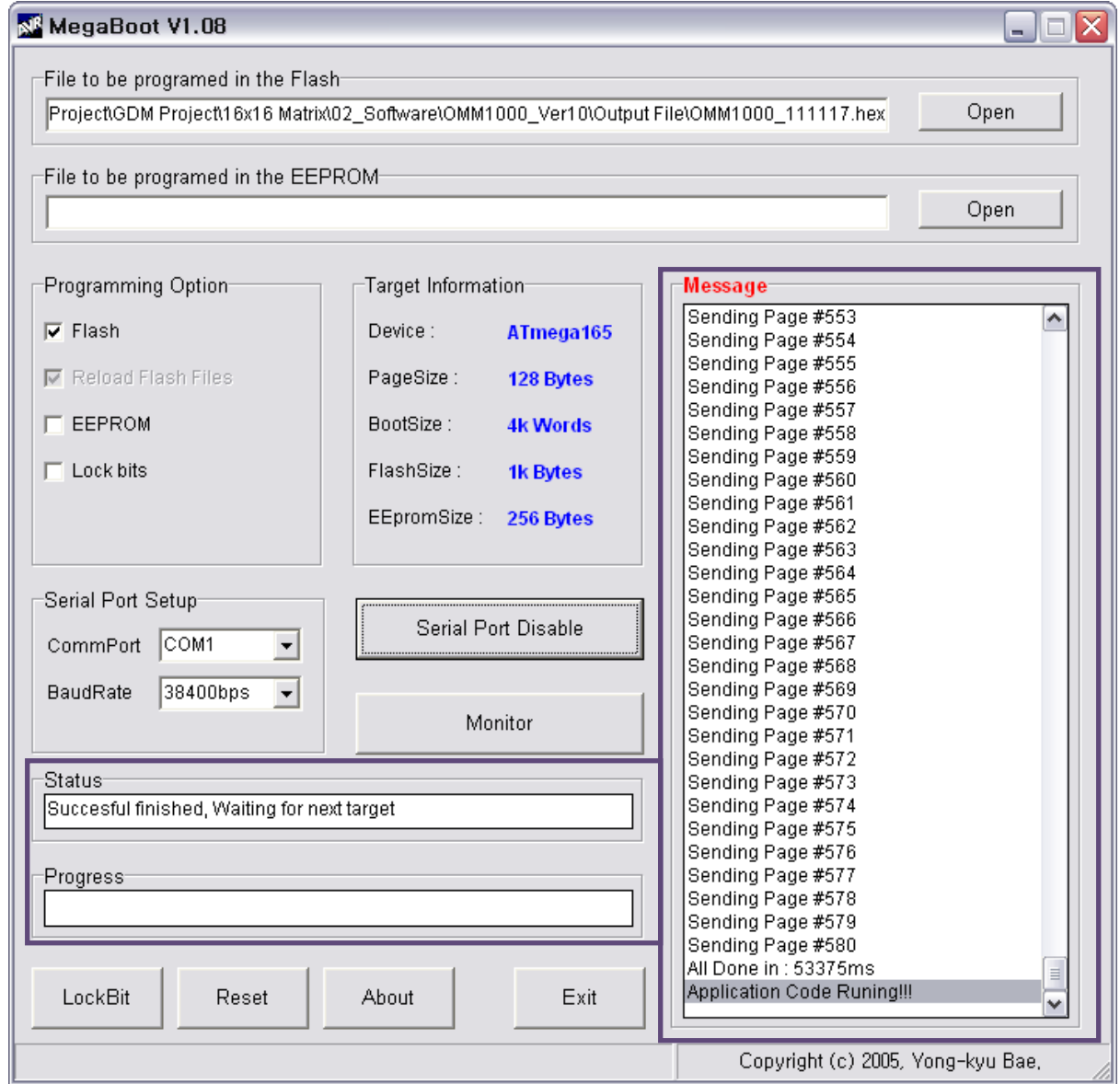
2. Click ①, Open of '**File to be programmed in the Flash**' to select directory and file (hex. Format) to be uploaded.



3. Connect the Firmware Port to be updated in a rear panel of OMM-2500 to RS-232 (Comm port) in PC using a supplied download cable.
4. Select ②, '**CommPort**' to select communication port of PC for RS-232 communication with OMM-2500.
5. To enable CommPort, Click ③ when it shown as 'Serial Port Enable'.
6. **Power-On of OMM-2500.**
7. Then the firmware will be uploaded and its status will be shown in the message box shown as below.



8. After 3~4 minutes, **Application Code Running!!!** message will be shown. Then the firmware upload is completed.



9. To be uploaded other Firmware files, repeat steps 2 to 8, if it's necessary.
10. Please close a megabox.exe program and reboot OMM-2500 to run it under new firmware.

Chapter 9. Trouble shooting

Problem	Symptom	Solution
No Power	Power LED Off	Check the connection of power cord to the OMM-2500 and AC power outlet and that make sure that power switch is in the ON.
No Output	No Output present	Check the Input Output cables are firmly connected to each port of OMM-2500. Check the Input and Output connection configuration you want.
		<p>The display is not capable of handling graphic resolution. Check the compatibility of EDID in the EEPROM and attached displays.</p> <p>When a single Input is routed to multiple outputs, lower resolution EDID should be selected. EX> Input 1 → Output 1 (UXGA) & Output 2(SXGA) If EEPROM 1 store the display 1 EDID (UXGA), the display 2 (SXGA) will not work due to resolution limit.</p>
		<p>The source has stopped sending a graphic signal. Check the Input source status by connecting it to available monitor without the OMM-2500.</p>

Chapter 10. Specification

10.1 General Specification

Section	Basic Spec.		Section	Basic Spec.	
Video resolution	Main VESA resolution & Main vertical frequency from 640x480 up to WUXGA (1920x1200), @60Hz WQXGA (2560x1600), @60Hz (Dual link , DisplayPort card only)		Reference video output	9 output video resolutions with 16 patterns	
HDCP	Support : Electric DVI, Dual link DVI, HDMI Non-support : Optical DVI, SDI, DisplayPort		Diagnosis	1) In/Output Link condition 2) source & display Link condition 3) EDID, HDCP information by the remote control through the Web	
Video format conversion	Video format conversion without scaling function		Configuration	Save & Restore for Current connection & Control condition by internal memory	
Multi -viewer	With additional output card (QDVI-O), Quad view & picture in picture (PIP)		EDID management	1) Default Mode 2) Auto Detect Mode 3) Output Copy Mode 4) Resolution List Mode	
In/Output	32 x 32 (4 ports in one in/output card) 16 x 16 (2 ports in one in/output card)		Color	Black	
Switching speed	< 1 sec (If No format searching by Display)		Touch LCD	Pressure type	
			In/Output card Spec.		
Size	440 x 440 x 311mm (WDH), (7U, 19")		Section	Model name	In/Output port
			Single DVI input	SDVI-4EI	4 x DVI-D receptacle
Weight	< 15Kg (net weight with dual powers)		Single DVI output	SDVI-4EO	4 x DVI-D receptacle
			Dual DVI input	DDVI-2EI	2 x DVI-D receptacle
			Dual DVI output	DDVI-2EO	2 x DVI-D receptacle
			HDMI input	HDMI-4EI	4 x HDMI receptacle
			HDMI output	HDMI-4EO	4 x HDMI receptacle
Cooling system	Cooling fan (Forced cooling system)		SDI input	SDI-4EI	4 x SDI receptacle
			SDI output	SDI -4EO	4 x SDI receptacle
Certifications	CE / FCC		DisplayPort input	DP1-4EI	4 x DP receptacle
			DisplayPort output	DP1-4EO	4 x DP receptacle
			Quad output	QDVI-O	1x DVI-D receptacle + 1x SC receptacle
Control system	Front-key, Touch LCD, RS-232, TCP/IP, Web		1 fiber DVI input	SDVI-1FI	4 x SC receptacle
			1fiber DVI output	SDVI-1FO	4 x SC receptacle
Operating condition	Temperature (°C)	10 ~ 40	Transport And Storage condition	Temperature (°C)	-30 ~ +70
	Relative humidity (%)	+30~ +75		Relative humidity (%)	+10~ +95
	Atmospheric Pressure (hPa)	700 ~ 1060		Atmospheric Pressure (hPa)	500 ~1060

10.2 Power Specification

AC Power

- 1) Input Voltage : AC100~240V \pm 10%, 50/60Hz
- 2) Power consumption : 4.5~1.8A
- 3) Shall have a power cord that complies with regulatory requirements imposed by the country of sale.
- 4) Incorporate a power cord management system for securing a bundled up cord.

External Fuse

- 1) Input Voltage: AC100~240V \pm 10%, 50/60Hz
- 2) Power consumption: 4.5~1.8A
- 3) F 16 AH250V

10.3 SDI video input and output scaling condition

Input card	Output card	Input resolution		Output resolution	
SDI card	SDI card	480i		720p@ 60	
		576i			
		720p@ 23.98	720p@ 30		
		720p@ 24	720p@ 50		
		720p@ 25	720p@ 59.94		
		720p@ 29.97	720p@ 60		
		1035i			720p@ 60
		1080i, 1080sf			1080p@ 60
		1080p@ 23.98	1080p @ 30		1080p@ 60
		1080p@ 24	1080p @ 50		
		1080p@ 25	1080p @ 59.94		
		1080p@ 29.97	1080p @ 60		
SDI card	HDMI, DVI, Fiber card	480i		SXGA (1280x1024)	
		576i			
		720p@ 23.98	720p@ 30	720p@ 60	
		720p@ 24	720p@ 50		
		720p@ 25	720p@ 59.94		
		720p@ 29.97	720p@ 60		
		1035i		720p@ 60	
		1080i, 1080sf		1080p@ 60	
		1080p@ 23.98	1080p @ 30	1080p@ 60	
		1080p@ 24	1080p @ 50		
		1080p@ 25	1080p @ 59.94		
		1080p@ 29.97	1080p @ 60		
HDMI, DVI, Fiber card	SDI card	depends on V display	720 ≤ V display < 1080	720p@ 60	
			V display ≥ 1080	1080p@ 60	

[Note] Both SDI input and output card do not support audio signal.

10.4 Compatibility between Dual link DVI In/Output cards and another

In/Output cards

Input \ Output		DDVI-2EO	SDVI-4EO	SDVI-1FO	HDMI-4EO	SDI -4EO
DDVI-2EI	Dual DVI	Pass	N/D	N/D	N/D	N/D
	Single DVI	Pass	Pass	Pass	Pass	Pass
SDVI-4EI		Pass	Pass	Pass	Pass	Pass
SDVI-1FI		Pass	Pass	Pass	Pass	Pass
HDMI-4EI		N/D	Pass	Pass	Pass	Pass
SDI -4EI		N/D	Pass	Pass	Pass	Pass

10.5 Compatibility between DisplayPort In/Output cards and another In/Output cards

Input card	Output card	Resolution
DP1-4EI	DP1-4EO	Up to WQXGA (2560x1600) at 60Hz (Not support Deep color)
DP1-4EO	SDVI-1FO	Up to WQXGA (2560x1600) at 60Hz
	SDVI-4EO	
	HDMI-4EO	
	SDI-4EO	
	DDVI-2EO	

Chapter 11. Warranty Information

1 (One) Year Warranty

Opticis warrants this optical DVI extension module to be free from defects in workmanship and materials, under normal use and service, for a period of one (1) year from the date of purchase from Opticis or its authorized resellers.

If a product does not work as warranted during the applicable warranty period, Opticis shall, at its option and expense, repair the defective product or part, deliver to customer an equivalent product or part to replace the defective item, or refund to customer the purchase price paid for the defective product.

This product should be serviced such as repair or replace by Opticis and please contact your reseller or Opticis if you have any problems. All products that are replaced will become the property of Opticis.

Replacement products may be new or reconditioned.

Any replaced or repaired product or part has a ninety (90) day warranty or the remainder of the initial warranty period, whichever is longer.

Opticis shall not be responsible for any software, firmware, information, or memory data of customer contained in, stored on, or integrated with any products returned to Opticis for repair under warranty or not.

Warranty Limitation and Exclusion

Opticis shall have no further obligation under the foregoing limited warranty if the product has been damaged due to abuse, misuse, neglect, accident, unusual physical or electrical stress, unauthorized modifications, tampering, alterations, or service other than by Opticis or its authorized agents, causes other than from ordinary use or failure to properly use the product in the application for which said product is intended.

Dispose of Old Electrical & Electronic Equipment

(Applicable in the European Union and other European countries with separate systems)



This marking shown the product or its literature, indicates that it should not be disposed with other household wastes at the end of its working life. To prevent

possible harm to the environment or human health from uncontrolled waste disposal, please separate this from other types of wastes and recycle it responsibly to promote the sustainable reuse of material resources.

Household users should contact either the retailer where they purchased this product, or their local government office, for details of where and how they can take this item for environmentally safe recycling.

Business users should contact their supplier and check the terms and conditions of the purchase contract. This product should not be mixed with other commercial wastes for disposal

Chapter 12. Safety Instructions



WARNING: Do not touch signal input, signal output of other connectors, and the patient simultaneously.



WARNING: Do not connect any accessory except provided by Opticis. Any damage caused other power adapters or accessories will not be taken any responsibility by Opticis.

Chapter 13. Maintenance

No special maintenance is required for the matrix and power. Ensure that the matrix and power are stored or used in a benign environment free from liquid or dirt contamination.

Refer all service and repair issues to Opticis.

- For commercial or general product support, contact your reseller. For technical service, contact Opticis by email techsupp@opticis.com or visit its website at www.opticis.com

Cleaning

- Turn off the power.
- Remove all of the electrical and optical fiber from the Modular matrix chassis, OMM-2500.
- Separate each input / output card from the body.
- Put the cards on the safety place and keep it carefully.
- Clean with dry cloth inside of the body after each card is separated.
- Remove dust on the surface of each card with air gun.
- Install each card back to the body



Opticis Locations

HQ

16Fl. Kins Tower, 8 Seongnam-daero, 331 beon-gil,
Bundang-gu,
Seongnam-si, Gyeonggi-o, 463-844
Rep. of KOREA
Tel: +82 (31) 719-8033
Fax: +82 (31) 719-8032

Factory

#501 Byoksan Technopia, 560,
Dunchon-daero,
Jungwon-gu,
Seongnam-si, Gyeonggi-do, 462-716
Rep. of KOREA
Tel: +82 (31) 737-8033
Fax: +82 (31) 737-8039

For order support, please contact your Distributor or Reseller.

For technical support, visit Opticis web site, www.opticis.com or contact techsupp@opticis.com