



RX115MK2

High-power road speaker 15"

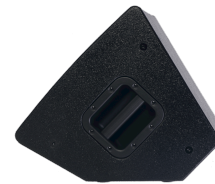
Highlights:

- 18 mm high-quality plywood
- 90° x 75° Rotatable horn
- 1.3" Compression horn tweeter
- 15" high-performance woofer
- Self-resetting tweeter overload protection
- ErgoGrip™ carry handle

The RX115MK2 is the 15" version of the RX family with a power of 300 Watt RMS. Along the 15" high power low frequency loudspeaker, it also contains a 1.3" HF compression driver, a passive crossover network and a tweeter overload protection circuit. There is an ergo grip on top of the speaker for easy handling, and the mounting can be done with the built-in 35mm speaker pole adapter and 12 rigging points. The RX series are full range speaker cabinets with a solid plywood enclosure and a durable scratch free EPDM coating, this makes them excellent for in- and outdoor road applications. By their multi-angled shape they can be used arrayed, on a speaker stand, standing upright and as floor monitor. The sound produced by these speakers is clear and natural, and will be appreciated in all situations. The newly introduced MK2 version of the RX speaker range has an improved tweeter and is fitted with a completely re-designed filter and protection network. This provides a warmer and more detailed sound and a bulletproof protection against tweeter overload. AUDAC recommends using the CAYMON Fly 100 eye bolt for mounting these speakers.

Applications:

- Clubs
- Events
- Concert venues
- Live performances



Properties:



Rotatable

Impedance:



8 Ohm

System specifications:

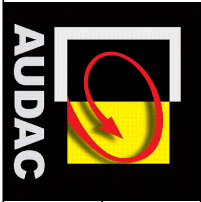
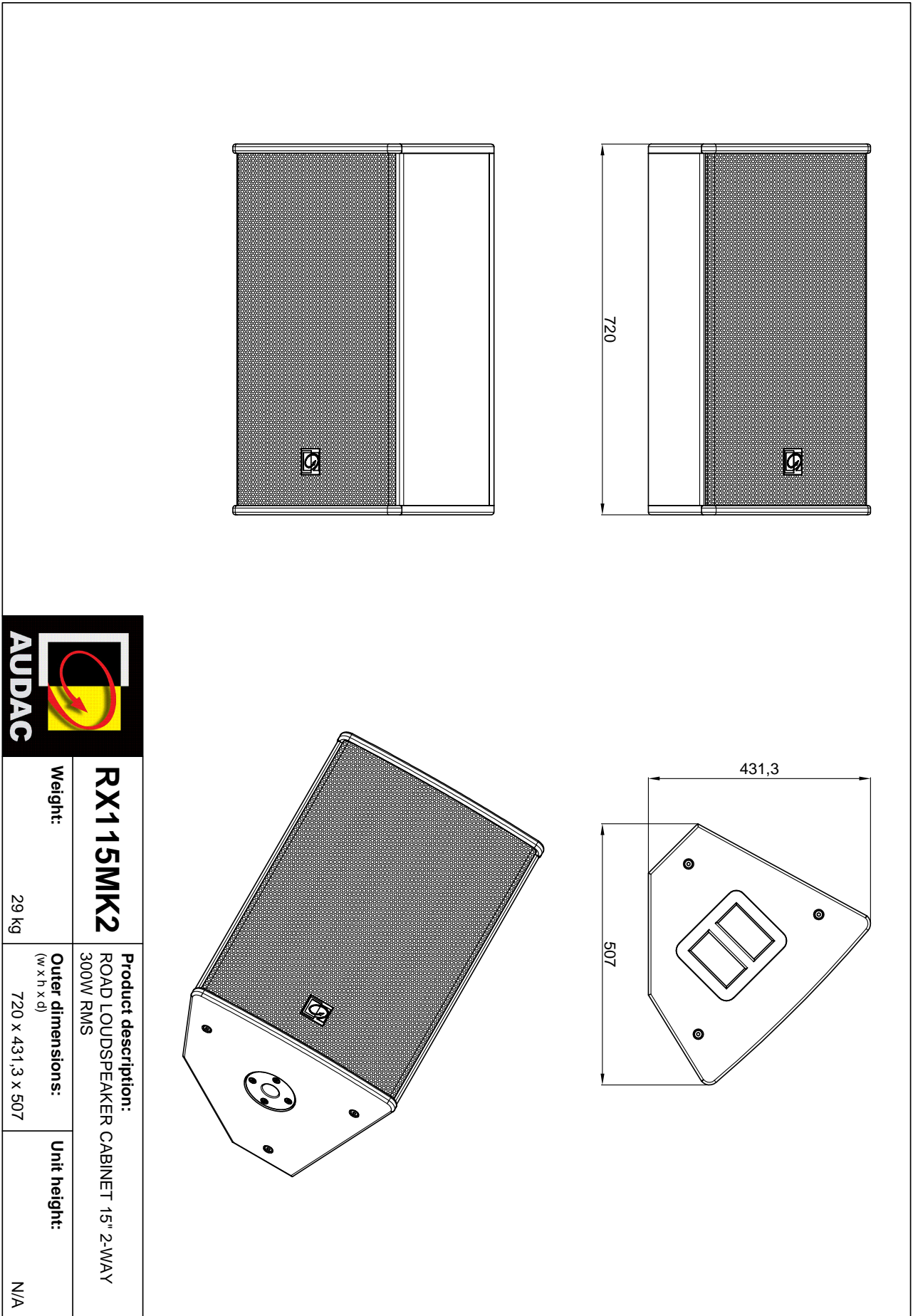
Speaker type		2-way
Max. Power		600 W
RMS Power		300 W
Impedance		8 Ω
Sensitivity (1W/1m)		101 dB
Sound Pressure (Max. W/1m)		126 dB
Frequency	Response (\pm 3 dB)	62 Hz - 18 kHz
	Range (-10 dB)	50 Hz - 20 kHz
Crossover	Frequency	2 kHz
	Type	Passive built-in
Dispersion	Horizontal	90°
	Vertical	75°
Connectors		2 x Speakon compatible (Linkthrough)
Drivers	HF	1.3" Compression driver
	MF	15"

Product Features:

Dimensions		450 x 720 x 390 mm (W x H x D)
Weight		29 kg
Construction		Plywood with textured EPDM coating
Front finish		Powder coated steel grill with lining
Mounting & handling	Rigging points	12 x M10
	Stand fitting	35 mm pole adapter on bottom
	Carry handles	On top
Colours		Black (RAL9005)
Accessories	Optional	CPB115R protective cover bag

Shipping & Ordering:

Packaging	Cardboard box
Shipping weight & volume	31.000 kg - 0.20 Cbm



RX115MK2	Product description: ROAD LOUDSPEAKER CABINET 15" 2-WAY 300W RMS	Unit height: N/A
Weight: 29 kg	Outer dimensions: (w x h x d) 720 x 431,3 x 507	