



▶▶ NEUMANN.BERLIN

▶ NDH 20

Quick Guide

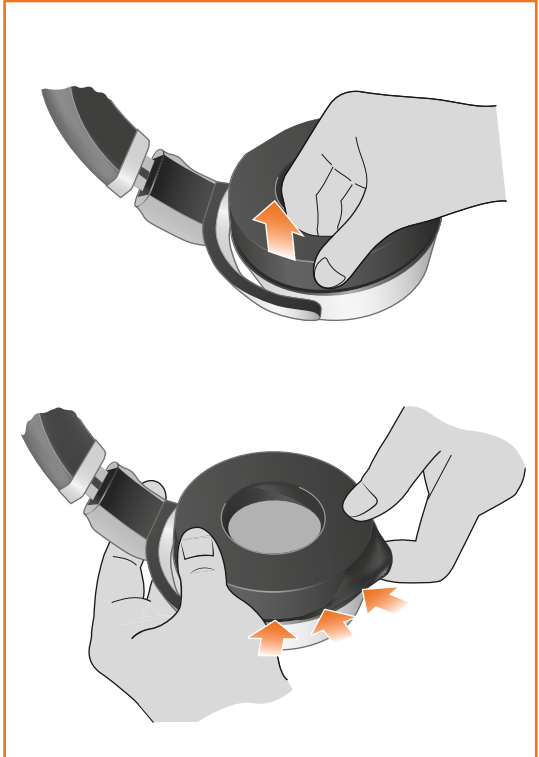
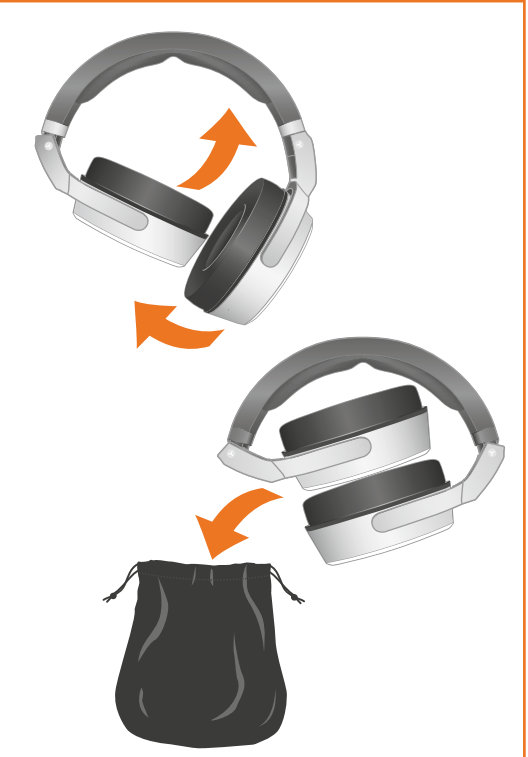
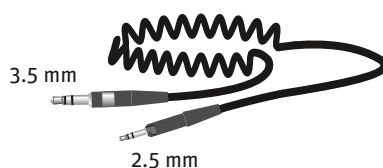
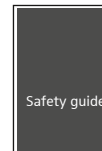
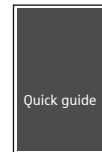
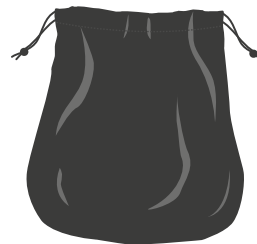
Kurzanleitung
 Guide rapide
 Guida rapida
 Guia de inicio rápido
 Pikaohje
 Γρήγορος οδηγός
 Kısa Kılavuz
 Краткая инструкция

Guia rápido

Beknopte handleiding
 Krótka instrukcja obsługi
 Snabbguide
 Kort vejledning
 快速指南
 クイックガイド
 퀵 가이드

PUBL. 02/19 - 581369/A02

GEORG NEUMANN GMBH · LEIPZIGER STR. 112 · 10117 BERLIN · GERMANY
 TEL +49 (0)30 / 41 77 24 -0 · FAX -50
 HEADOFFICE@NEUMANN.COM · WWW.NEUMANN.COM



Specifications	
Ear coupling	Circumaural
Acoustic principle	Closed back
Transducer	38 mm driver, dynamic, with neodymium magnet
Impedance	150 Ω
Frequency range	5 Hz - 30 kHz [-3 dB]
Peak power handling	1000 mW
Continuous power handling	200 mW
Sound pressure level	114 dB SPL [1 kHz, 1 Vrms]
Total harmonic distortion (THD)	< 0.1 % [1 kHz, 100 dB SPL]
Magnetic field strength	4 mT
Weight	388 g (without cable)
Environmental conditions	
Operating temperature	+5 °C to +45 °C (41 °F to 113 °F)
Storage temperature	-15 °C to +70 °C (5 °F to 158 °F)
Relative humidity	≤ 90 %