

Construction

Fixture-housing is made of formed, cold-rolled sheet steel. Dome shaped interior fixture housing.

Fixture Body Finish

Low-gloss, Easy-White finish (Tiger Drylac 449/11707 smooth flat) is standard, with custom colors available.

Fixture and Reflector

Reflectors are of formed aluminum high diffuse sheet metal construction, featuring 98% reflectance White Optic material. Direct task lights provide general room illumination; as option, fixtures can be configured with video lights only.

Ballast

Ballasts are available in switched or in a variety of dimmable configurations. All ballasts are high-frequency electronic, with a Power Factor > .97, THD, 10% and a Class A sound rating. Ballasts are in the fixture housing. Power and control inputs are from the side and top.

Lamps

This Brightline fixture uses 55-watt compact fluorescent lamps, F24T5 (2-ft), F28T5 (4-ft), or F54T5/HO (4-ft) linear lamps, available in a variety of color temperatures and CRI ratings. Studioline and Cinema Series 55-watt Biax and T-5 High Output linear lamps in 3200K are optimized specifically for video camera applications. (see Lamp Options Datasheet for details.)

Accessories

Louvers available in white, painted-aluminum, or custom finish. (See Louver Options Datasheet for details.)

Fixture Dimensions, Aperture and Weight

4-foot Inch: 47.75- x 10.45- x 8.91-in
(1212.85- x 265.43- x 226.31-mm)
Metric: 1195.58- x 265.43- x 226.31-mm
(47.07- x 10.45- x 8.91-in)
Aperture: 5.00- x 47.00-in
(127.00- x 1193.80-mm)
Fixture Weight: 27-lbs (12.25-kg)

2-foot Inch: 23.75- x 10.45- x 8.91-in
(603.25- x 265.43- x 226.31-mm)
Metric: 585.98- x 265.43- x 226.31-mm
(23.07- x 10.45- x 8.91-in)
Aperture: 5.00- x 23.00-in
(127.00- x 584.20-mm)
Fixture Weight: 17-lbs (7.71-kg)

Electrical Certifications

UL, cUL, and CCEA* approved.



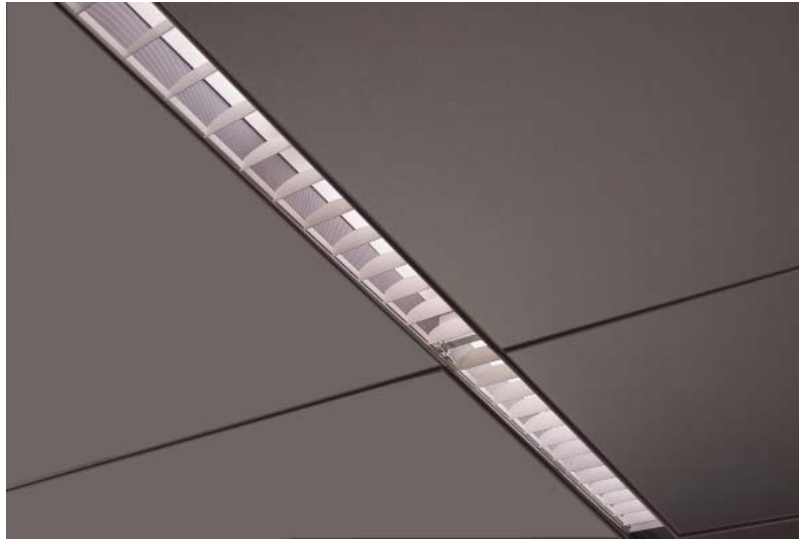
VideoPlus can be outfitted to fit a range of aesthetics. The straight louver design complements most architectural styles without interfering with light output.

*Note: CCEA certification provided by request; additional charges may apply.

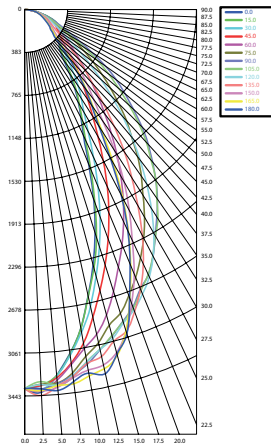
US and Foreign Patents Pending.

580 Mayer Street - Building # 7 - Bridgeville, PA 15017 USA

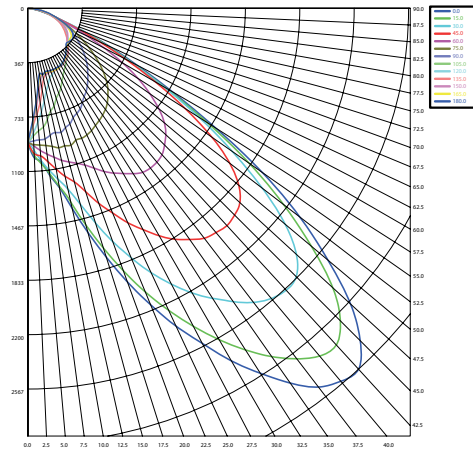
Phone: 1.412.206.0106 - Fax: 1.412.206.0146



Task Light
90° horizontal light distribution



Videoconference Light with Lens
45° vertical light distribution



VP			
VideoPlus	Length	Ballast Type	Voltage
	Specify Length in 2-ft increments	A = 0 - 10V	1 = 120V
	2-ft BIAx of Linear	E = Ecosystem	2 = 230V
	4-ft BIAx or Linear	N = Non-Dim	7= 277V
		P = Phase	
		X = Digital	

Video Lamp
V1B - 1LT 55w BIAx
V1H - 1LT F24T5/HO
V1L - 1LT F54T5/HO
V1F - 1LT F28T5
V00 - No Lamp

Task Lamp
T1B - 1LT 55w BIAx
T1H - 1LT F24T5/HO
T1L - 1LT F54T5/HO
T1F - 1LT F28T5
T2L - 2LT F54T5/HO
T2F - 2LT F28T5
T00 - No Lamp

Certification
PR = CCEA

Note: 2-foot fixture can use either Biax or Linear Lamps only, no combinations.

Note: Phase-Dim ballasts are not available in 230V.

Note: Phase-Dim ballast are not available for F28T5 lamps.

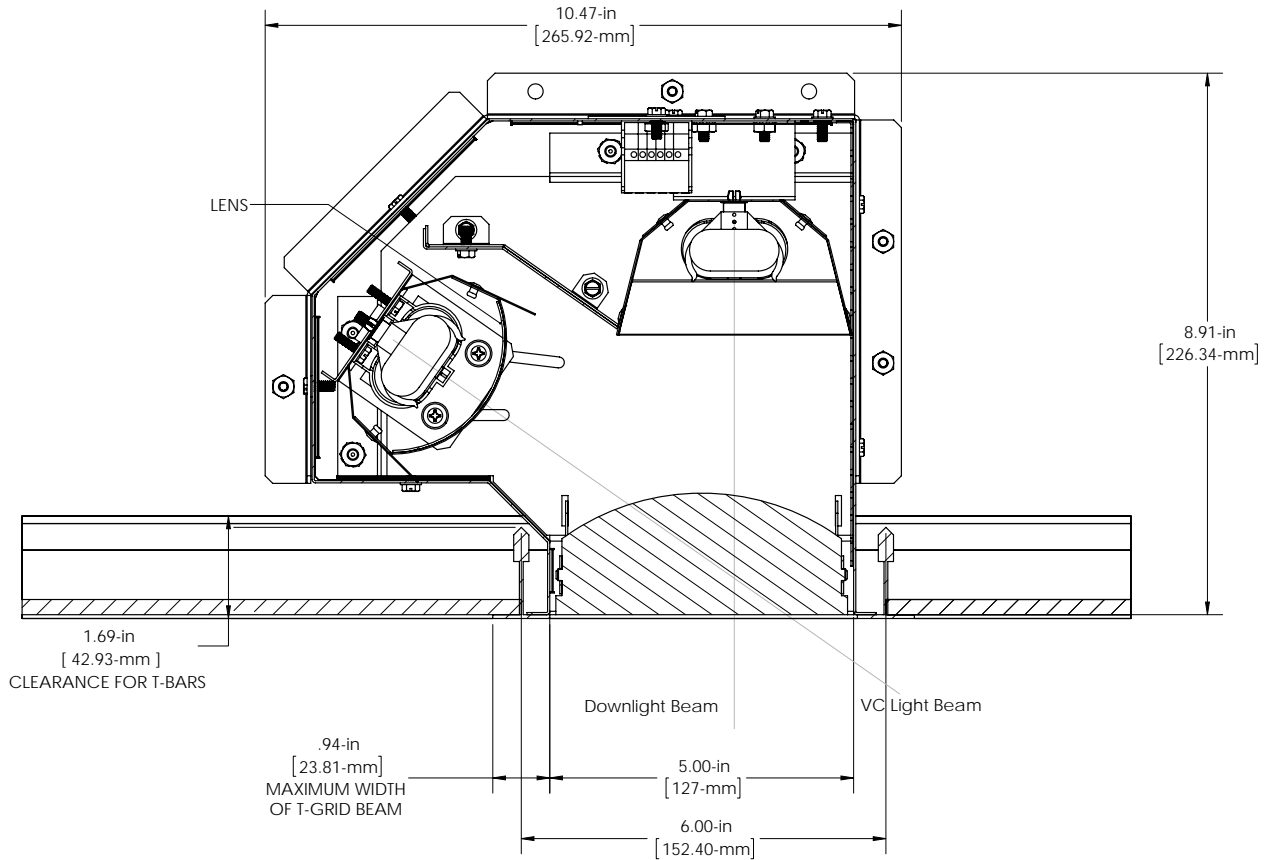
Note: CCEA Fixtures will have bare leads for control and power; all control cable to be provided by contractor.

580 Mayer Street - Building # 7 - Bridgeville, PA 15017 USA

Phone: 1.412.206.0106 - Fax: 1.412.206.0146



Section View Straight Louver



Shipping Information	
4-foot fixture	2-foot fixture
Length: 48.50-in (1231.90-mm)	Length: 24.50-in (622.30-mm)
Width: 11.50-in (292.10-mm)	Width: 11.50-in (292.10-mm)
Height: 13-in (330.20-mm)	Height: 13-in (330.20-mm)
Weight: 29-lb (13.15-kg)	Weight: 19-lb (8.62-kg)

580 Mayer Street - Building # 7 - Bridgeville, PA 15017 USA

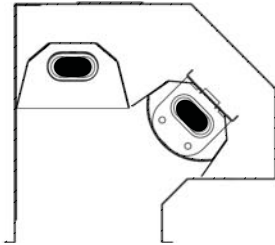
Phone: 1.412.206.0106 - Fax: 1.412.206.0146



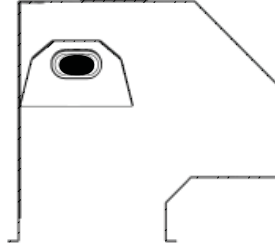
brightline[®]

© 2015 Brightline LP All Rights Reserved

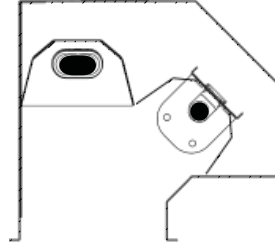
Sample Lamp Configurations



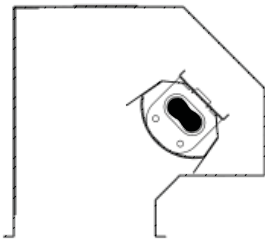
Video Biax Lamp,
Task Biax Lamp



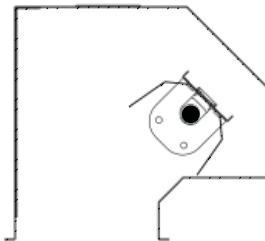
No Video Lamp,
Task Biax Lamp



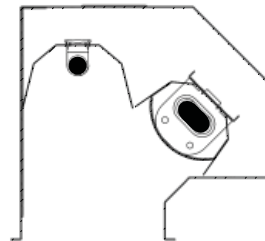
Video Linear Lamp,
Task Biax Lamp



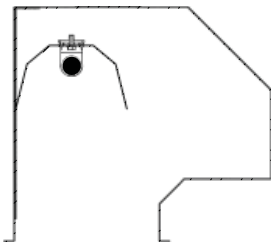
Video Biax Lamp,
No Task Lamp



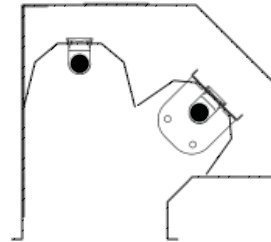
Video Linear Lamp,
No Task Lamp



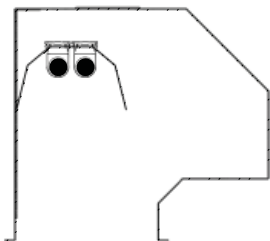
Video Biax Lamp,
Task Linear Lamp



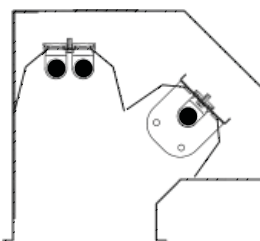
No Video Lamp,
Task Linear Lamp



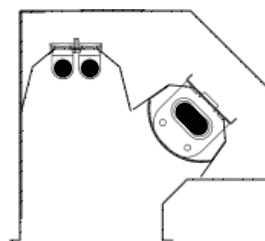
Video Linear Lamp,
Task Linear Lamp



No Video Lamp, Task
Dual Linear Lamp*



Video Linear Lamp, Task
Dual Linear Lamp*



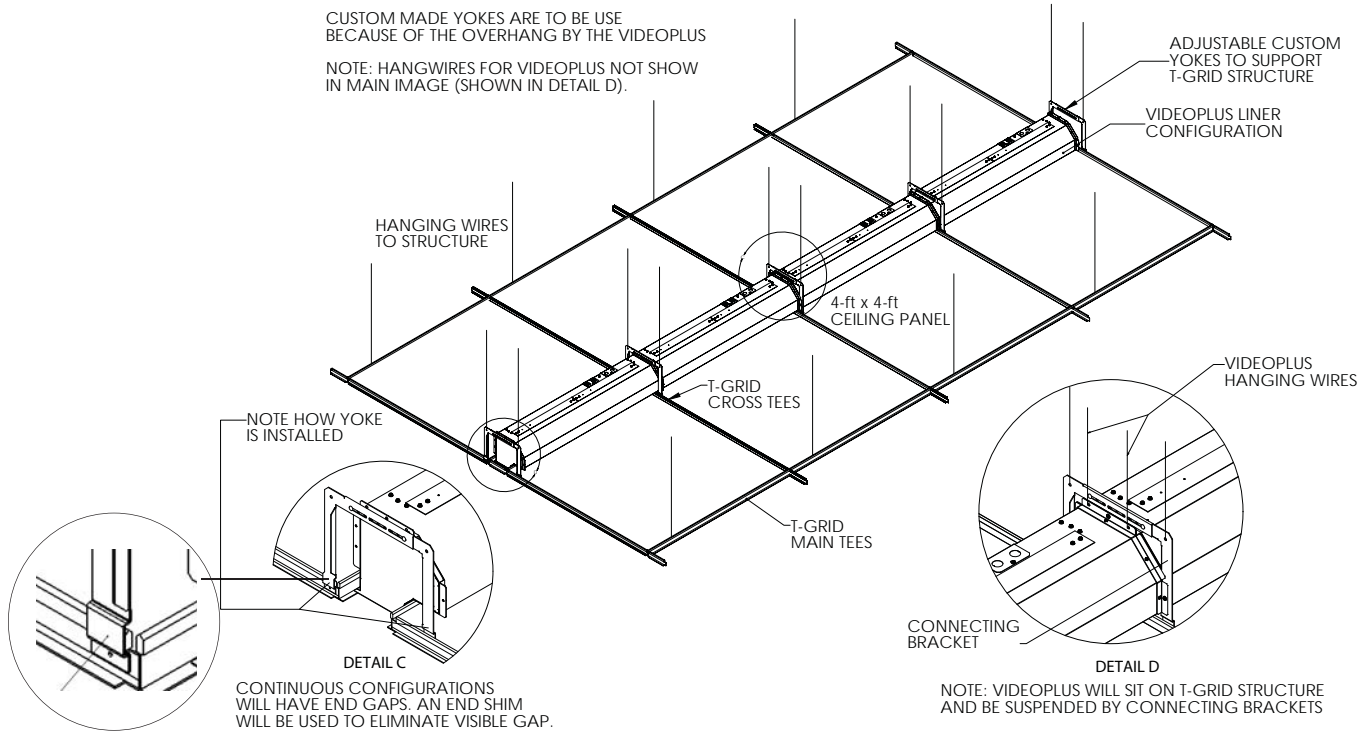
Video Biax Lamp, Task
Dual Linear Lamp*

* Dual Linear Lamps are only available in 4-Foot VideoPlus Fixtures.

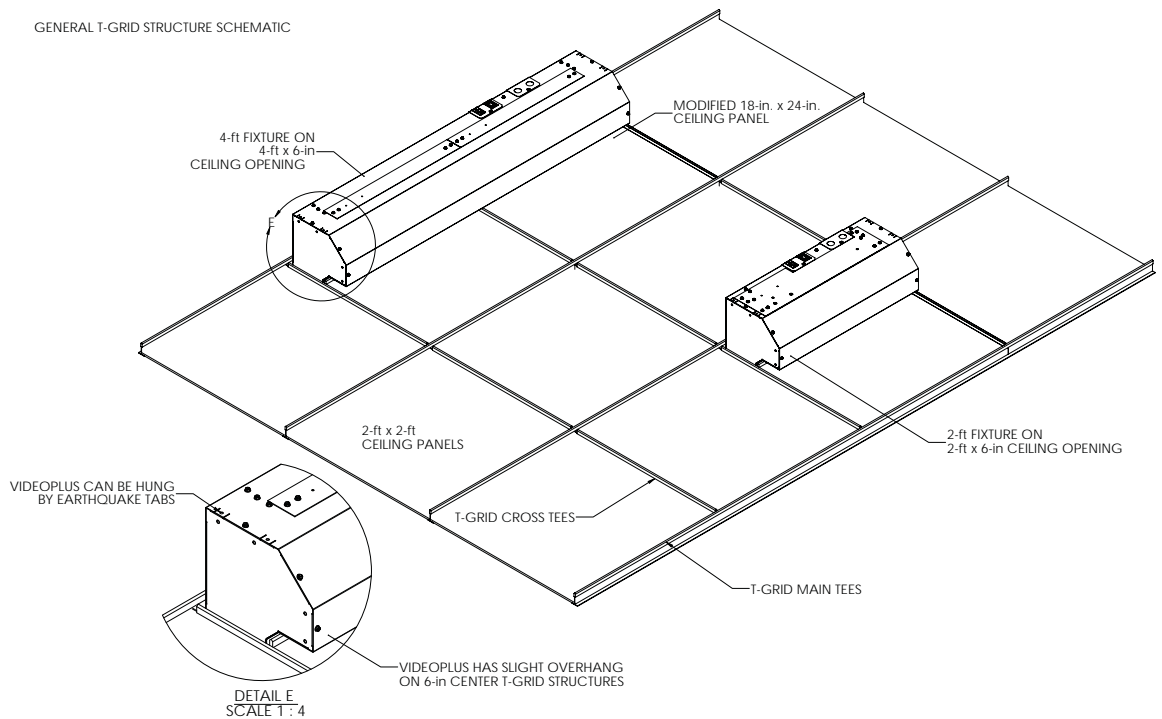


Continuous Run Ceiling Installation

CUSTOM MADE YOKES ARE TO BE USE BECAUSE OF THE OVERHANG BY THE VIDEOPLUS
NOTE: HANGWIRES FOR VIDEOPLUS NOT SHOW IN MAIN IMAGE (SHOWN IN DETAIL D).



Standard Ceiling Installation



580 Mayer Street - Building # 7 - Bridgeville, PA 15017 USA

Phone: 1.412.206.0106 - Fax: 1.412.206.0146

