



Scan for full manual

## WP-580TXR, WP-580RXR Quick Start Guide

This guide helps you install and use your WP-580TXR, WP-580RXR for the first time.

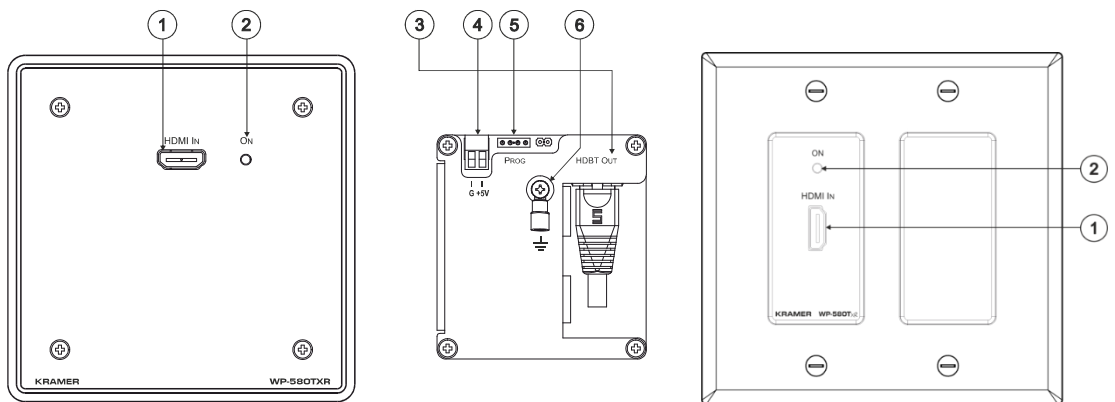
Go to [www.kramerav.com/downloads/WP-580TXR](http://www.kramerav.com/downloads/WP-580TXR) to download the latest user manual and check if firmware upgrades are available.

### Step 1: Check what's in the box

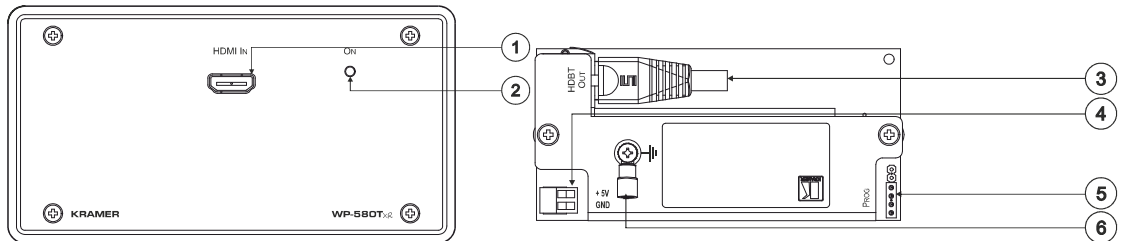
- ✓ WP-580Txr HDMI Line Transmitter
- ✓ WP-580Rxr HDMI Line Receiver
- ✓ 1 5V DC Power adapter (for each device)
- ✓ 1 Quick start guide

### Step 2: Get to know your WP-580TXR, WP-580RXR

**WP-580Txr**  
(US and US-D Sizes):



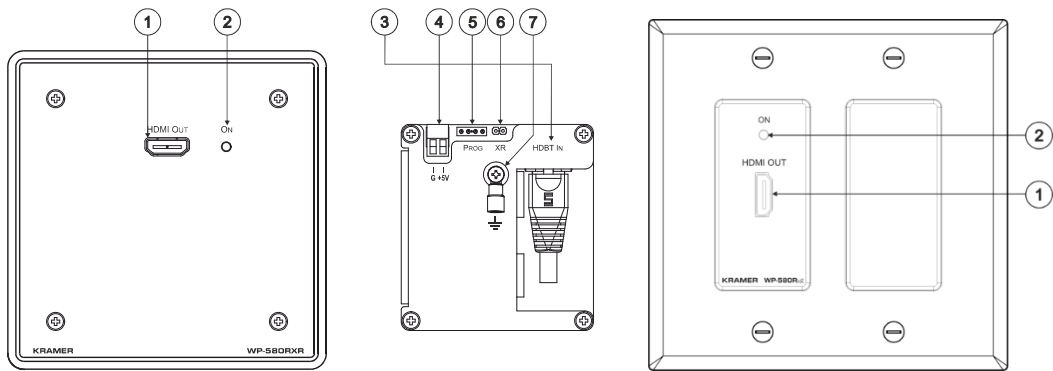
**WP-580Txr**  
(European Size):



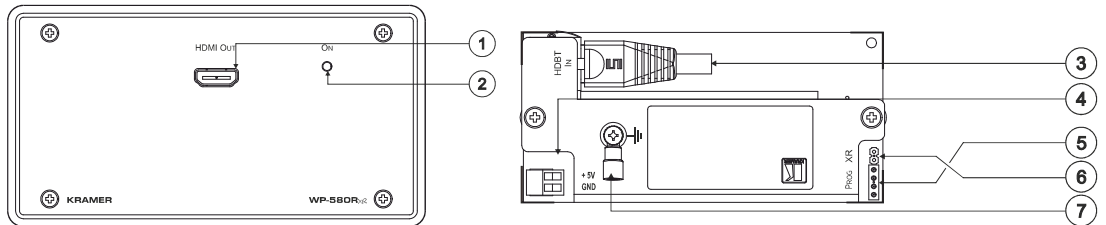
#	Feature	Function
1	HDMI™ IN Connector	Connects to the HDMI source.
2	ON LED	Lights red when receiving power only, orange when either input or output and power are attached, and green when both an active input and output are attached. <b>Note</b> , if no input is connected, the device invokes the power save mode automatically turning off the power.
3	HDBT OUT/LINE OUT RJ-45 Connector	Connects to the HDBT IN/LINE IN RJ-45 connector on the <b>WP-580Rxr</b> .
4	5V DC	+5V DC connector for powering the unit.
5	PROG 4-pin Connector	For internal use.
6	Grounding Screw	Connect to grounding wire.

The terms HDMI, HDMI High-Definition Multimedia Interface, and the HDMI Logo are trademarks or registered trademarks of HDMI Licensing Administrator, Inc.

**WP-580Rxr**  
(US and US-D Sizes):



**WP-580Rxr**  
(European Size):



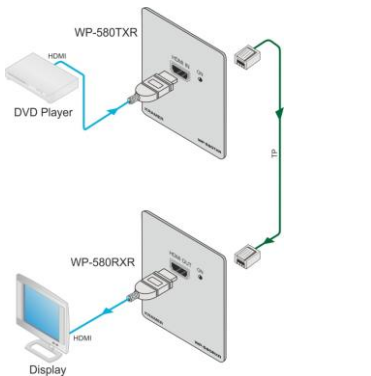
#	Feature	Function
1	HDMI OUT Connector	Connects to the HDMI acceptor.
2	ON LED	Lights red when receiving power only, orange when either input or output and power are attached, and green when both an active input and output are attached. <b>Note</b> , if no input is connected the device invokes the power save mode automatically turning off the power.
3	HDBT IN/LINE IN RJ-45 Connector	Connects to the HDBT OUT/LINE OUT RJ-45 connector on the <b>WP-580Txr</b> .
4	+5V DC	+5V DC connector for powering the unit.
5	PROGRAM 4-pin Connector	For internal use.
6	XR Jumper	For providing extra transmitter-receiver range: With the Jumper: a range of up to 150 meters (490 feet) at 1080p@60Hz@24bpp Without the Jumper: A range of up to 100 meters (330 feet) at 1080p@60Hz@36bpp
7	Grounding Screw	Connect to grounding wire.

### Step 3: Mount WP-580Txr, WP-580Rxr

Connect the TP cable between the **WP-580Txr** and **WP-580Rxr** and then mount them in suitable wall boxes.

### Step 4: Connect inputs and outputs

Always switch OFF the power on each device before connecting it to your **WP-580Txr**, **WP-580Rxr**.



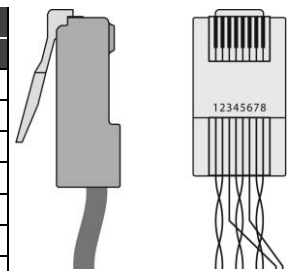
#### Wiring the RJ 45 Connectors

This section defines the TP pinout, using a straight pin-to-pin cable with RJ 45 connectors.



For HDBT cables, it is recommended that the cable ground shielding be connected/soldered to the connector shield.

EIA /TIA 568B	
PIN	Wire Color
1	Orange / White
2	Orange
3	Green / White
4	Blue
5	Blue / White
6	Green
7	Brown / White
8	Brown



To achieve specified extension distances, use the recommended Kramer cables available at [www.kramerav.com/product/WP-580Txr](http://www.kramerav.com/product/WP-580Txr). Using third-party cables may cause damage!

### Step 5: Connect power

Connect the power cord to **WP-580Txr**, **WP-580Rxr** and plug it into the mains electricity.

Safety Instructions (See [www.kramerav.com](http://www.kramerav.com) for updated safety information)

**Caution:**

- For products with relay terminals and GPIO ports, please refer to the permitted rating for an external connection, located next to the terminal or in the User Manual.
- There are no operator serviceable parts inside the unit.

**Warning:**

- Use only the power cord that is supplied with the unit.
- Disconnect the power and unplug the unit from the wall before installing.

