



e 865/e 865 S

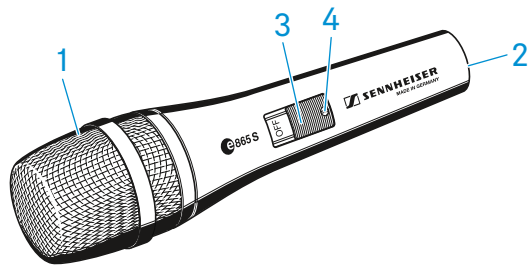
Instruction manual



Delivery includes

- e 865 / e 865 S
- MZQ 800 microphone clamp
- pouch
- quick guide
- safety guide

Product overview



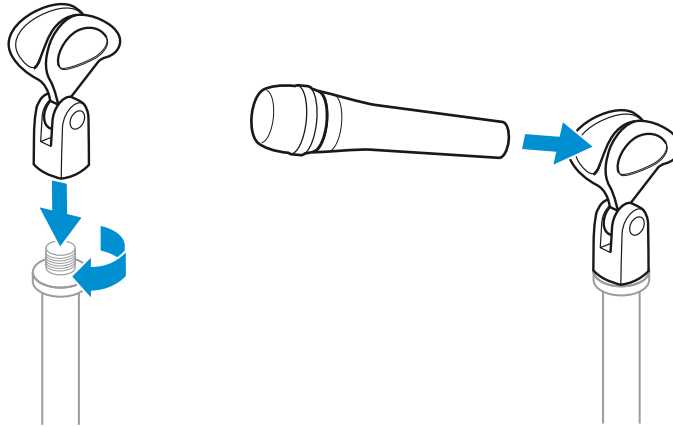
1. Sound inlet basket
2. XLR-3 connector
3. On/off switch (e 865 S only)
4. Screw (e 865 S only)



Installation

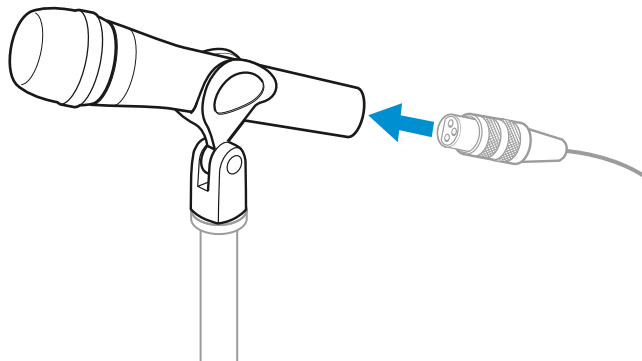
Attaching the microphone

- ▷ Screw the microphone clamp to a stand.
- ▷ Place the microphone with its back end into the microphone clamp.
- ▷ Orient the microphone together with the microphone clamp.



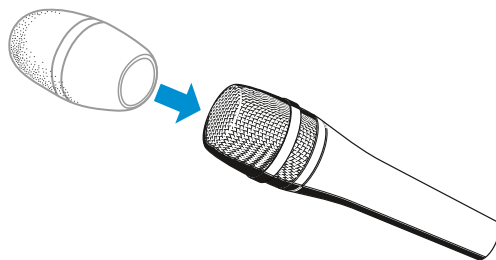
Connecting the microphone

- ▷ Connect the XLR-3 socket of the microphone cable (optional accessories) to the XLR-3 socket of the microphone.



Using the windshield

- ▷ Place the MZW 4032 (optional accessories) windshield over the microphone head.



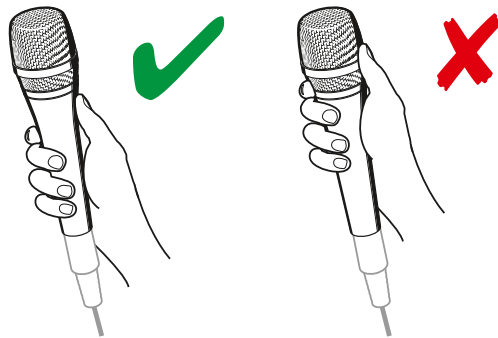


Operation

Holding the microphone

If you cover the microphone head during transmission, this will change the pick-up pattern of the microphone and consequently the sound.

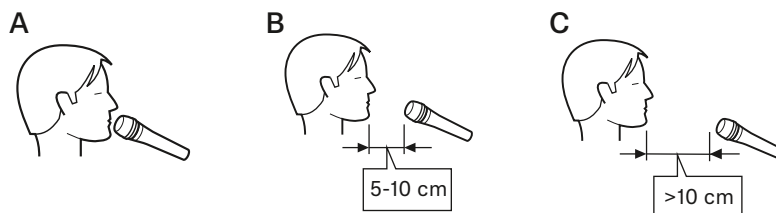
- ▷ Only hold the microphone by its body.



Positioning the microphone

- ▷ It is vital to observe the following notes:

Position	Resulting sound	Commentary
A	High proximity effect (large bass boost) Powerful, direct sound	Very little crosstalk from other sound sources
B	Less proximity effect (less bass boost) Some room ambience, natural, balanced sound	More crosstalk from other sound sources
C	Very little proximity effect (minimal bass boost) More room ambience, indirect sound	Higher crosstalk from other sound sources



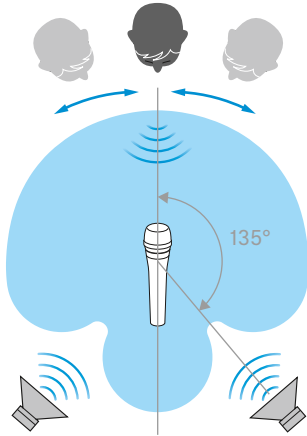
If sibilance occurs:

- ▷ Position the microphone slightly to the side and not directly in front of the mouth.



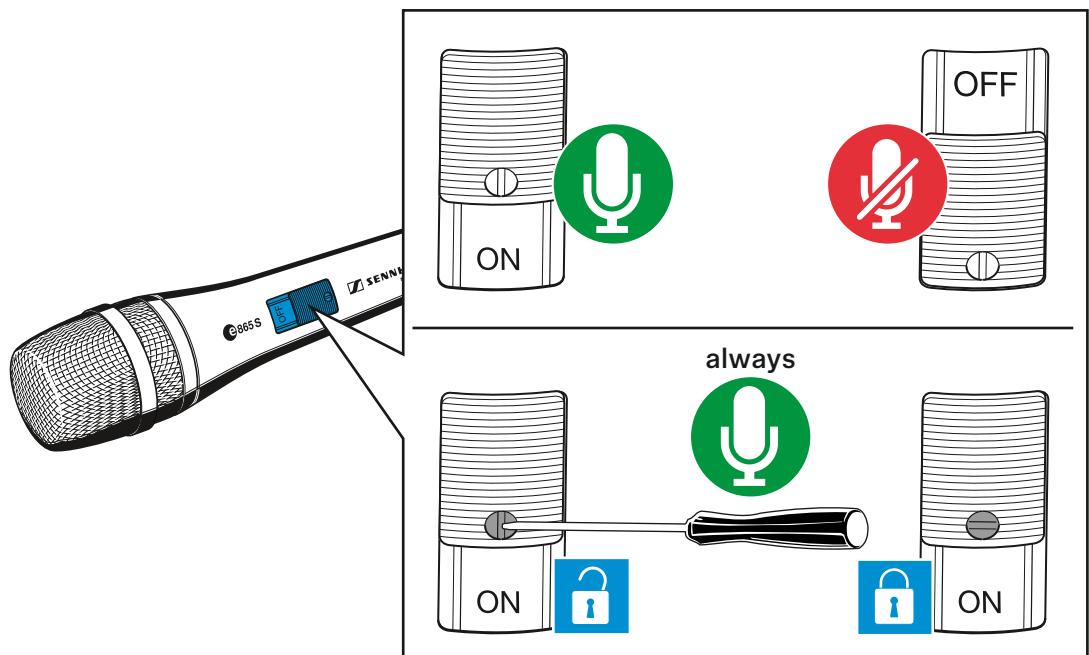
Positioning the monitor loudspeakers

- ▷ To prevent feedback and crosstalk, position your monitor loudspeakers in the angle area of the highest cancellation of the microphone (approx. 135°).



Switching the e 865 S on/off

- ▷ Use the on/off switch to switch the the e 865 S on or off.
- ▷ If necessary, use the screw to lock the on/off switch in the „on“ position.





Cleaning and maintaining the e 865 / e 865 S

CAUTION

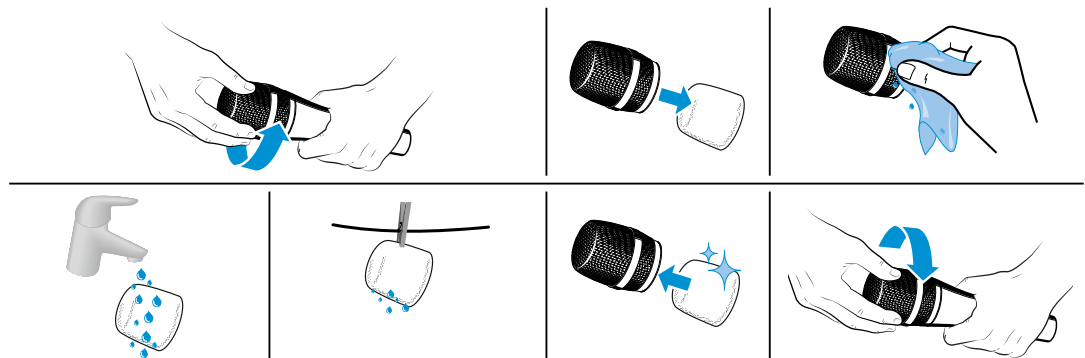
LIQUIDS CAN DAMAGE THE ELECTRONICS OF THE PRODUCT!

Liquids entering the housing of the product can cause a short-circuit and damage the electronics.

- ▷ Keep all liquids away from the product.
 - ▷ Do not use any solvents or cleansing agents.
-
- ▷ Disconnect the products from the power supply system and remove rechargeable batteries and batteries before you begin cleaning.
 - ▷ Clean all products only with a soft, dry cloth.

Cleaning the sound inlet basket of the microphone module

- ▷ Unscrew the sound inlet basket.
- ▷ Remove the foam insert from the sound inlet basket.
- ▷ Use a slightly damp cloth to clean the sound inlet basket from the inside and outside.
- ▷ If necessary, clean the foam insert with a mild detergent or replace the foam insert.
- ▷ Dry the foam insert.
- ▷ Reinsert the foam insert.
- ▷ Replace the sound inlet basket on the microphone head and screw it tight.

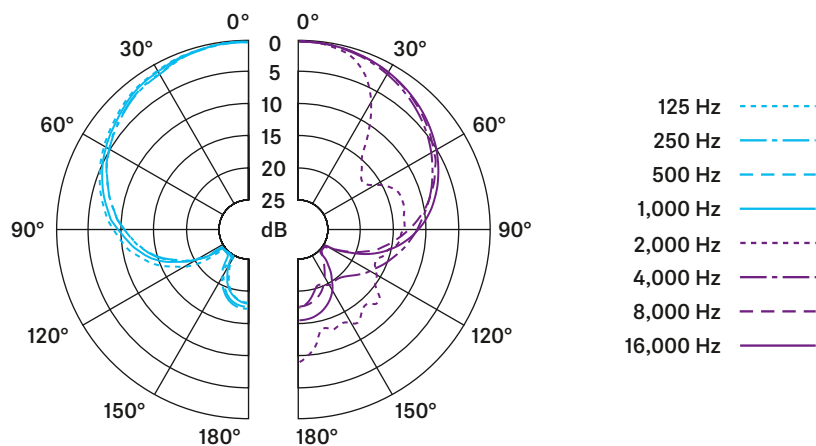




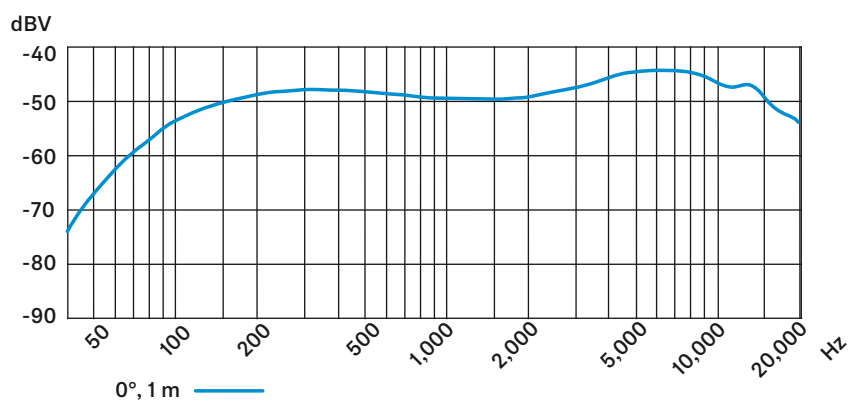
Specifications

Transducer principle	pre-polarized condenser microphone
Frequency response	40 - 20,000 Hz
Pick-up pattern	super-cardioid
Sensitivity (free field, no load)	3 mV/Pa
Nominal impedance (at 1 kHz)	200 Ω (balanced)
Min. terminating impedance	1 k Ω
Max. sound pressure level (at 1 kHz)	150 dB
Phantom powering	12 - 48 V
Connector	XLR-3
Temperature range	0 °C to +40 °C
Dimensions	\varnothing 47 x 193 mm
Weight	311 g

Polar pattern

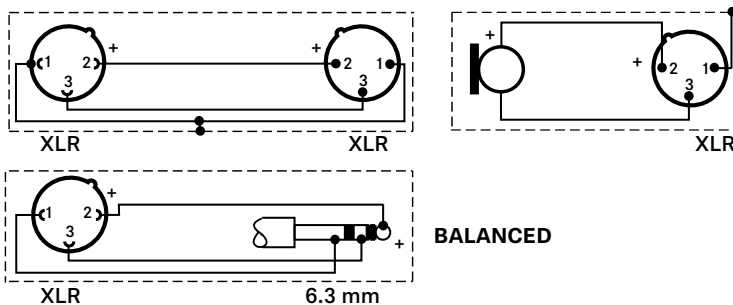


Frequency response





Connector assignment



Overview of applications

● Primary application

● Secondary application



	Vocal	Speech	Music	Instruments	Drums	Microphone	Speaker	Headset	Headset
e 602 II		●	●	●	●	●			●
e 604		●					●	●	●
e 608		●					●	●	●
e 609 silver				●			●	●	●
e 614		●	●	●			●		●
e 835	●	●							●
e 845	●	●							●
e 865	●	●							●
e 901						●	●		●
e 902					●	●	●		●
e 904		●					●	●	●
e 906				●			●	●	●
e 908			●				●	●	●
e 914		●	●	●			●		●
e 935	●								●
e 945	●								●
e 965	●	●		●					●