



**e 902**

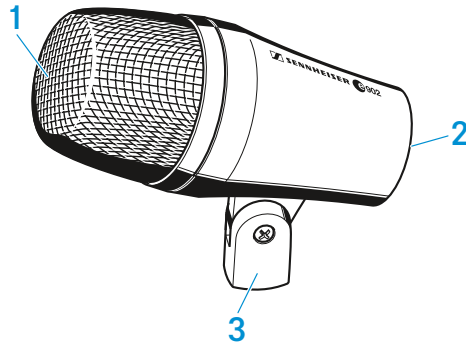
Instruction manual



## Delivery includes

- e 902
- pouch
- quick guide
- safety guide

## Product overview



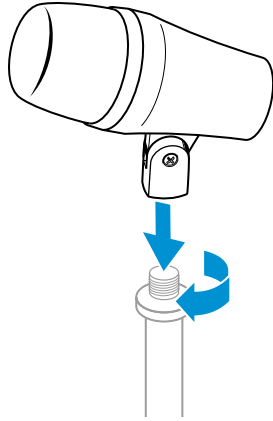
1. sound inlet basket
2. XLR-3 connector
3. integral stand mount



## Installation

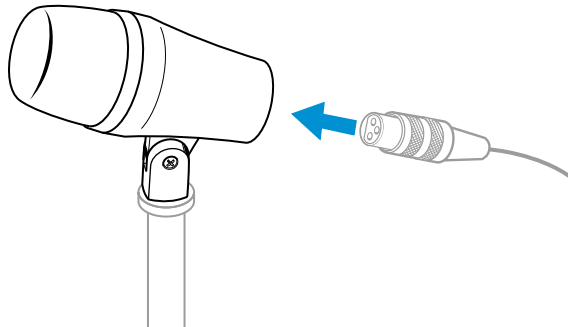
### Attaching the microphone

- ▷ Screw the microphone's built-in mount onto a sufficiently stable microphone stand.



### Connecting the microphone

- ▷ Connect the XLR-3 socket of the microphone cable (optional accessories) to the XLR-3 socket of the microphone.





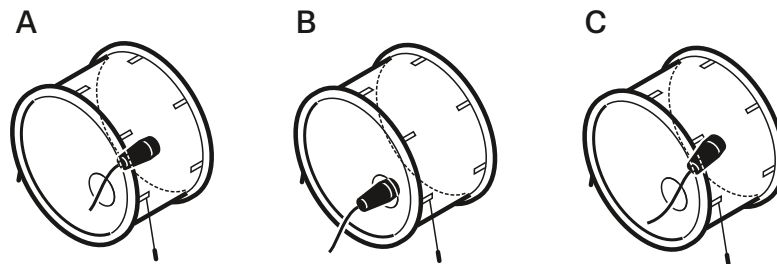
## Operation

### Positioning the microphone on a kick drum

- ▷ Attach the microphone using the built-in mount.
- ▷ It is vital to observe the following notes:

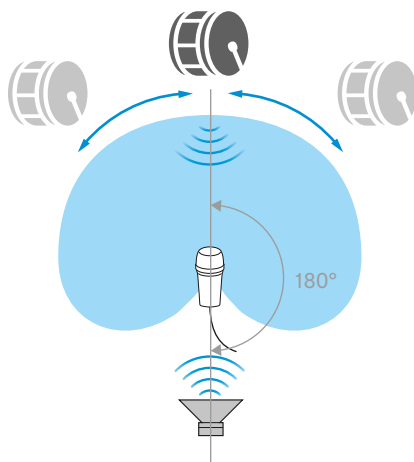
Position	Resulting sound	Commentary
A	much attack little resonance dry	Position the microphone at a distance of a few centimeters from the batter head.
B	less attack much resonance smooth and voluminous	Position the microphone at the level of the resonant head.
C	less Attack	Position the microphone in the middle between the batter head and the resonant head.

**i** For less attack in all three positions, turn the microphone away from where the beater strikes.



### Positioning the monitor loudspeakers

- ▷ To prevent feedback and crosstalk, position your monitor loudspeakers in the angle area of the highest cancellation of the microphone (approx. 180°).





## Cleaning and maintaining the e 902

### CAUTION

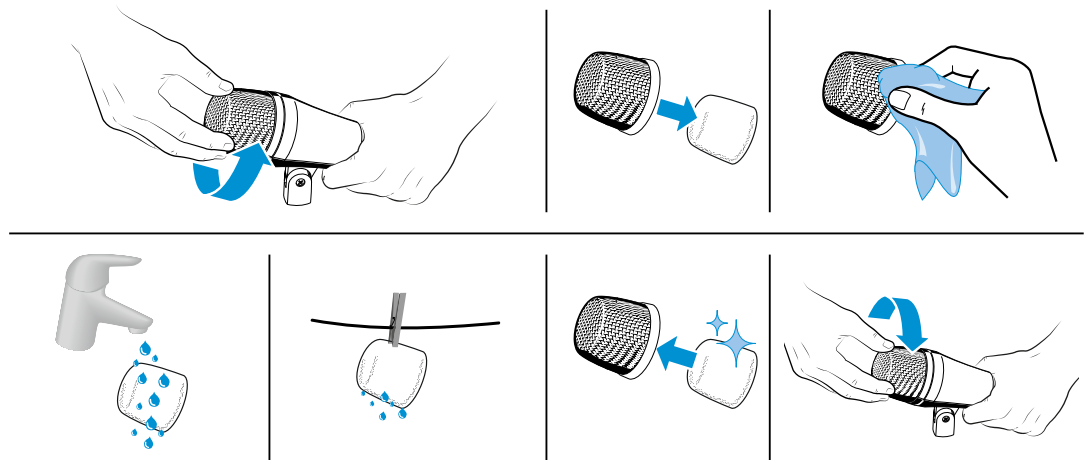
#### LIQUIDS CAN DAMAGE THE ELECTRONICS OF THE PRODUCT!

Liquids entering the housing of the product can cause a short-circuit and damage the electronics.

- ▷ Keep all liquids away from the product.
  - ▷ Do not use any solvents or cleansing agents.
- 
- ▷ Disconnect the products from the power supply system and remove rechargeable batteries and batteries before you begin cleaning.
  - ▷ Clean all products only with a soft, dry cloth.

### Cleaning the sound inlet basket of the microphone module

- ▷ Unscrew the sound inlet basket.
- ▷ Remove the foam insert from the sound inlet basket.
- ▷ Use a slightly damp cloth to clean the sound inlet basket from the inside and outside.
- ▷ If necessary, clean the foam insert with a mild detergent or replace the foam insert.
- ▷ Dry the foam insert.
- ▷ Reinsert the foam insert.
- ▷ Replace the sound inlet basket on the microphone head and screw it tight.

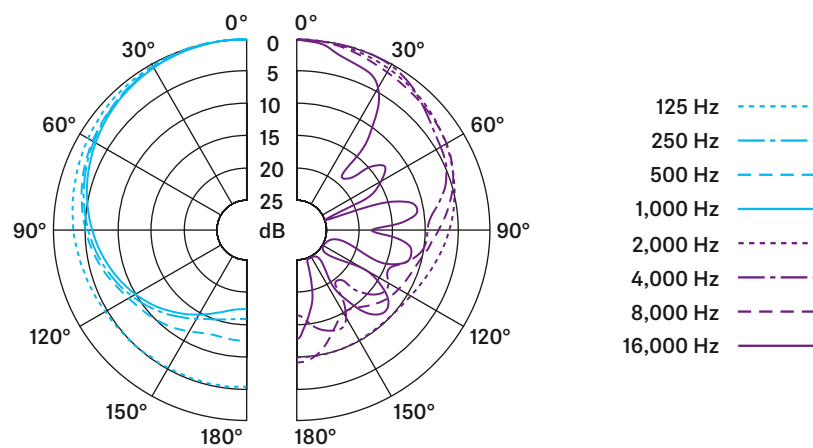




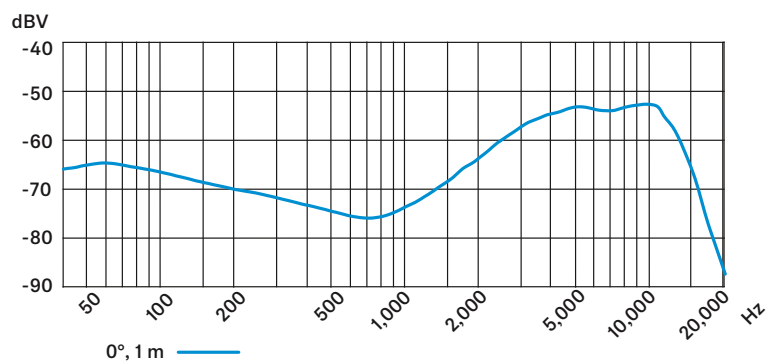
## Specifications

Transducer principle	dynamic
Frequency response	20 - 18,000 Hz
Pick-up pattern	cardioid
Sensitivity (free field, no load)	0.6 mV/Pa (at 60 Hz) 0.2 mV/Pa (at 1 kHz)
Nominal impedance (at 1 kHz)	350 $\Omega$
Min. terminating impedance	1 k $\Omega$
Connector	XLR-3
Dimensions	$\varnothing$ 60 mm, length 128,5 mm
Weight	440 g

### Polar pattern

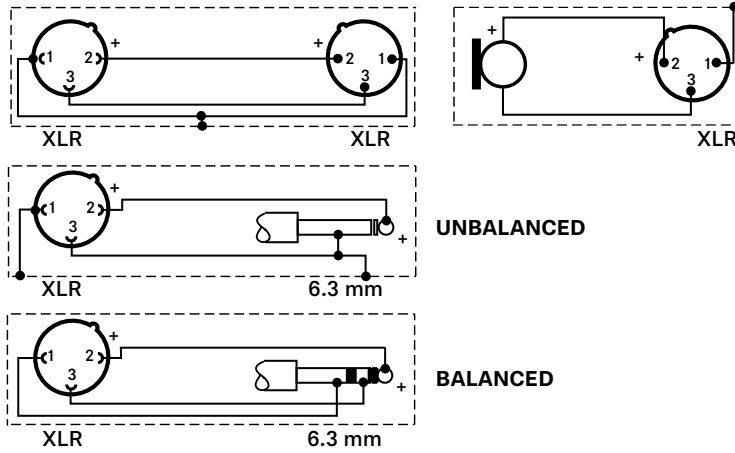


### Frequency response





### Connector assignment



## Overview of applications

- Primary application
- Secondary application

e 602 II				•	•		•	•		•										•
e 604				•										•	•	•	•			•
e 608				•										•	•		•			•
e 609 silver														•	•	•	•			•
e 614			•	•		•	•			•							•		•	•
e 835	•	•																		•
e 845	•	•																		•
e 865	•	•																		•
e 901														•	•					•
e 902									•	•		•								•
e 904				•										•	•	•	•			•
e 906														•	•	•	•			•
e 908														•	•	•	•			•
e 914				•	•															•
e 935	•																			•
e 945	•																			•
e 965	•	•																		•