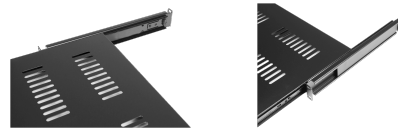
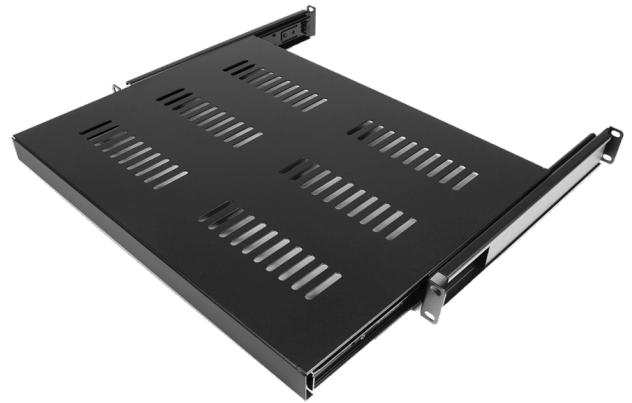


# SPR60SS

## 19" sliding shelf - for SPR600 series

A 19" Sliding shelf made of steel with a thickness of 1,2 mm with a black structural powder coating. The shelf can be used to store equipment which doesn't contain a standard 19" mounting fixture or equipment that needs to be accessed frequently. The smooth sliding shelf provides easy access. For use with SPR600 series only.



### Product Features:

Dimensions	483 x 10 x 380 mm (W x H x D)
Weight	3.200 kg
Max. usable depth	350 mm
Max. load	50 kg
Max. spacing between mounting rails	500 mm
Max. usable width	428 mm

