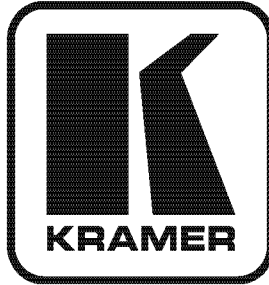


Kramer Electronics, Ltd.



USER MANUAL

Models:

TP-953, DVI/Audio Line Transmitter

TP-954, DVI/Audio Line Receiver

Contents

1	Introduction	1
2	Getting Started	1
2.1	Quick Start	2
3	Overview	3
3.1	Using Twisted Pair Cable	4
4	Your DVI/Audio Line Transmitter and Line Receiver	4
4.1	Your TP-953 DVI/Audio Line Transmitter	5
4.2	Your TP-954 DVI/Audio Line Receiver	6
5	Connecting a DVI/Audio Transmitter/Receiver System	7
5.1	Adjusting the EQ Level	8
5.2	Wiring the CAT 5 LINE IN/LINE OUT RJ-45 Connectors	9
6	Technical Specifications	10

Figures

Figure 1:	TP-953 DVI/Audio Line Transmitter	5
Figure 2:	TP-954 DVI/Audio Line Receiver	6
Figure 3:	Connecting the TP-953/TP-954	8
Figure 4:	CAT 5 Pinout	9

Tables

Table 1:	Features and Functions of the TP-953	5
Table 2:	Features and Functions of the TP-954	6
Table 3:	Equalization Level Setup	8
Table 4:	CAT 5 Pinout	9
Table 5:	TP-953/TP-954 Technical Specifications	10

1 Introduction

Welcome to Kramer Electronics! Since 1981, Kramer Electronics has been providing a world of unique, creative, and affordable solutions to the vast range of problems that confront the video, audio, presentation, and broadcasting professional on a daily basis. In recent years, we have redesigned and upgraded most of our line, making the best even better! Our 1,000-plus different models now appear in 11 groups¹ that are clearly defined by function.

Thank you for purchasing the Kramer MultiTOOLS™ **TP-953** *DVI/Audio Line Transmitter*, **TP-954** *DVI/Audio Line Receiver*, which is ideal for:

- Home theater, presentation and multimedia applications
- Rental and staging

Each package includes the following items:

- The **TP-953** *DVI/Audio Line Transmitter* and/or **TP-954** *DVI/Audio Line Receiver*
- Power adapter (12V DC input)
- This user manual²

2 Getting Started

We recommend that you:

- Unpack the equipment carefully and save the original box and packaging materials for possible future shipment
- Review the contents of this user manual
- Use Kramer high-performance high-resolution cables³

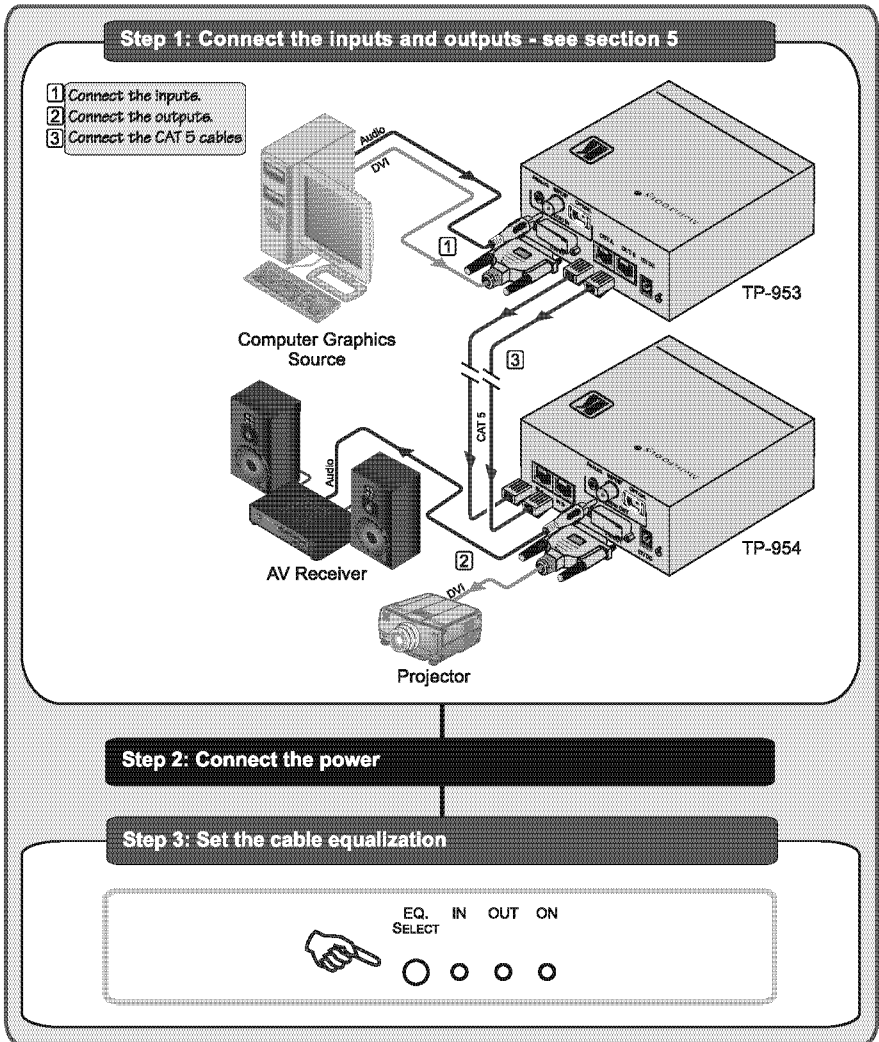
1 GROUP 1: Distribution Amplifiers; GROUP 2: Switchers and Matrix Switchers; GROUP 3: Control Systems; GROUP 4: Format/Standards Converters; GROUP 5: Range Extenders and Repeaters; GROUP 6: Specialty AV Products; GROUP 7: Scan Converters and Sealers; GROUP 8: Cables and Connectors; GROUP 9: Room Connectivity; GROUP 10: Accessories and Rack Adapters; GROUP 11: Sierra Products

2 Download up-to-date Kramer user manuals from our Web site at <http://www.kramerelectronics.com>

3 The complete list of Kramer cables is on our Web site at <http://www.kramerelectronics.com>

2.1 Quick Start

This quick start chart summarizes the basic setup and operation steps.



3 Overview

Using the **TP-953** *DVI/Audio Line Transmitter* with the **TP-954** *DVI/Audio Line Receiver* constitutes a DVI/audio line transmitter/receiver system. The **TP-953** accepts analog, S/PDIF, and optical audio and DVI video input signals, encodes and sends them over two CAT 5 cables. The **TP-954** receives the CAT 5 signal, which includes both audio and video, decodes and distributes it to the audio and video acceptors.

The **TP-953** *DVI/Audio Line Transmitter* includes:

- A DVI input
- Three audio inputs: analog stereo, S/PDIF digital stereo, and optical
- Two CAT 5 LINE OUT RJ-45 connectors for signal transmission to the **TP-954**
- Indicator LEDs for IN, OUT and power ON

The **TP-954** *DVI/Audio Line Receiver* includes:

- Two CAT 5 LINE IN RJ-45 connectors for receiving signals from the **TP-953**
- A DVI output
- Three audio outputs: analog stereo, S/PDIF digital stereo, and optical
- Indicator LEDs for IN, OUT and power ON
- An equalization select button

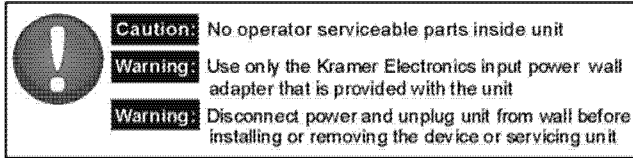
In addition, the **TP-953/ TP-954** system features:

- **System Range**¹—Up to 60m (197ft) at XGA, or up to 30m (98ft) at WUXGA on shielded **BC-DGKat524** cable; 60m (197ft) at SXGA on shielded **BC-DGKat623** cable; 60m (197ft) at SXGA on shielded **BC-DGKat7a23** cable
- **Cables**—For optimum range and performance, use Kramer's **BC-DGKat524**, **BC-DGKat623** and **BC-DGKat7a23**
- Resolution up to WUXGA (reduced blanking)
- HDCP compliance

¹ Note that the transmission range depends on the signal resolution, graphics card and display used. The distance using non-Kramer CAT 5, CAT 6 and CAT 7a cables may not reach these ranges

To achieve the best performance:

- Use only good quality connection cables¹ to avoid interference, deterioration in signal quality due to poor matching, and elevated noise levels (often associated with low quality cables)
- Avoid interference from neighboring electrical appliances that may adversely influence signal quality and position your Kramer **TP-953**, **TP-954** away from moisture, excessive sunlight and dust



3.1 Using Twisted Pair Cable

Kramer engineers have developed special twisted pair cables to best match our digital twisted pair products; the Kramer **BC-DGKat524** (CAT 5 24 AWG), the Kramer **BC-DGKat623** (CAT 6 23 AWG cable), and the Kramer **BC-DGKat7a23** (CAT 7a 23 AWG cable). These specially built cables significantly outperform regular CAT 5/CAT 6/CAT 7a cables.

4 Your DVI/Audio Line Transmitter and Line Receiver

This section describes the:

- **TP-953** *DVI/Audio Line Transmitter*, see [Section 4.1](#)
- **TP-954** *DVI/Audio Line Receiver*, see [Section 4.2](#)

¹ Available from Kramer Electronics on our Web site at <http://www.kramerelectronics.com>

4.1 Your TP-953 DVI/Audio Line Transmitter

Figure 1 and Table 1 define the TP-953 unit.

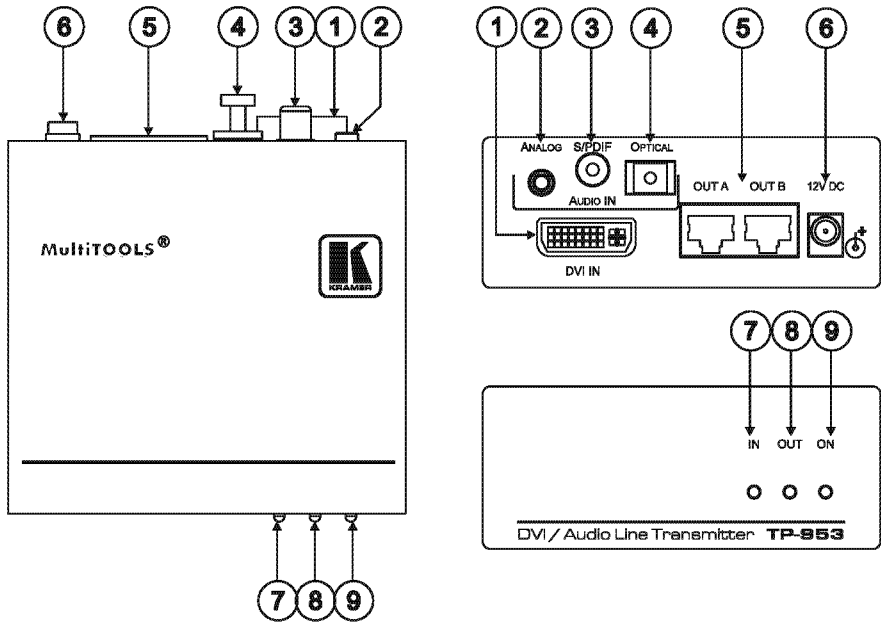


Figure 1: TP-953 DVI/Audio Line Transmitter

Table 1: Features and Functions of the TP-953

#	Feature	Function	
1	DVI IN Connector	Connects to the DVI source (digital signals only)	
2	AUDIO IN	ANALOG 3.5mm Mini Connector	Connects to the analog audio source
		S/PDIF RCA Connector	Connects to the digital audio source
		OPTICAL Connector	Connects to the optical audio source
4	OUT A, OUT B RJ-45 Connectors	Connects to the IN A, IN B connectors on the TP-954 ¹	
5	12V DC	+12V DC connector for powering the unit	
6	IN LED	Lights when an input source is connected	
7	OUT LED	Lights when an output acceptor is connected	
8	ON LED	Lights when receiving power	
9			

¹ Using a straight pin to pin UTP cable with RJ-45 connectors at both ends (the pinout is defined in Table 4 and Figure 4)

4.2 Your TP-954 DVI/Audio Line Receiver

Figure 2 and Table 2 define the TP-954 unit.

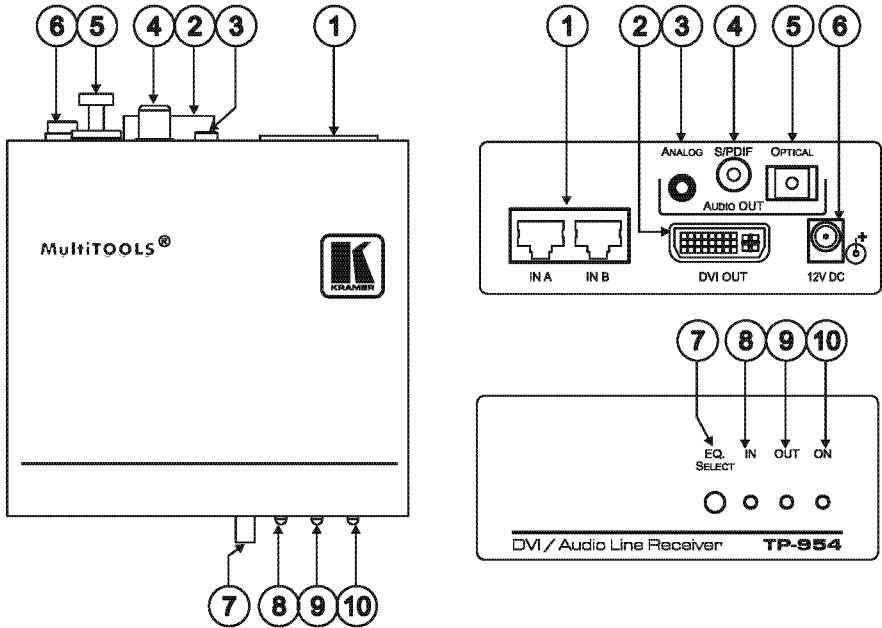


Figure 2: TP-954 DVI/Audio Line Receiver

Table 2: Features and Functions of the TP-954

#	Feature	Function	
1	IN A, IN B RJ-45 Connectors	Connects to the OUT A, OUT B connectors on the TP-953 ¹	
2	DVI OUT	Connects to the DVI acceptor (digital signals only)	
3	AUDIO OUT	ANALOG 3.5mm Mini Connector	Connects to the analog audio acceptor
4		S/PDIF RCA Connector	Connects to the digital audio acceptor
5		OPTICAL Connector	Connects to the optical audio acceptor
6	12V DC	+12V DC connector for powering the unit	
7	EQ. SELECT Button	Press to select equalization for the cable length	
8	IN LED	Lights when an input source is connected	
9	OUT LED	Lights when an output acceptor is connected	
10	ON LED	Lights when receiving power	

¹ Using a straight pin to pin UTP cable with RJ-45 connectors at both ends (the pinout is defined in Table 4 and Figure 4)

5 Connecting a DVI/Audio Transmitter/Receiver System

To connect a **TP-953/TP-954** DVI/audio transmitter/receiver system (for example, a high-quality home cinema system), as [Figure 3](#) illustrates, do the following:

1. On the **TP-953** connect:
 - A DVI video source¹ to the DVI IN connector and an audio source (for example, a computer graphics source)
 - The two CAT 5 cables to OUT A and OUT B on RJ-45 connectors¹
2. On the **TP-954** connect:
 - The OUT A CAT 5 cable from the **TP-953** to the IN A RJ-45 connector on the **TP-954**¹
 - The OUT B CAT 5 cable from the **TP-953** to the IN B RJ-45 connector on the **TP-954**¹
 - A DVI video acceptor¹ (for example, a projector) to the DVI OUT connector
 - An audio acceptor (for example, an AV receiver)
3. Connect the 12V DC power adapter to the power socket and connect the adapter to the mains electricity of either the **TP-953** or the **TP-954**².
4. Adjust the equalization level (see [Section 5.1](#)).

¹ Do not connect an analog signal

² If one of the devices does not power on, connect a power supply to both units

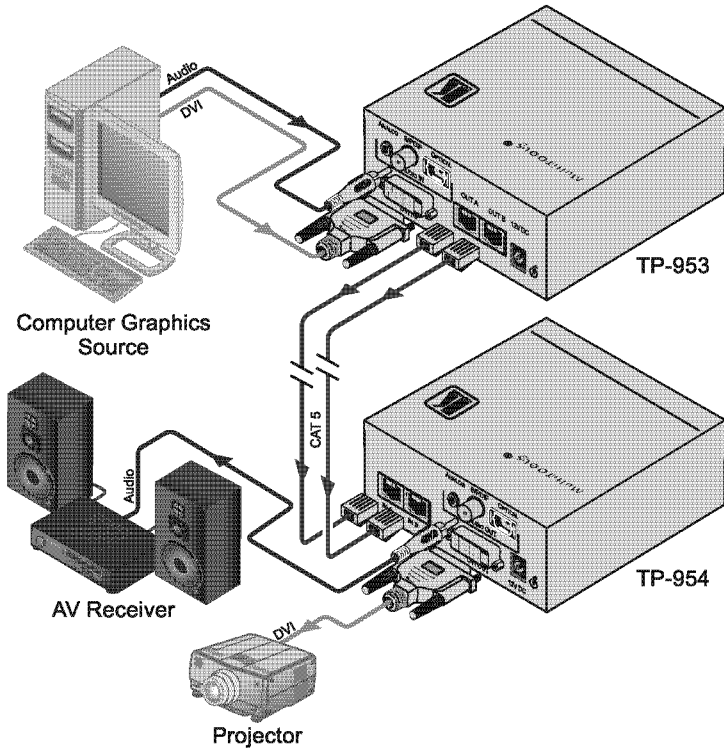


Figure 3: Connecting the TP-953/TP-954

5.1 Adjusting the EQ. Level

To adjust the equalization to compensate for various cable lengths:

1. Press the EQ. SELECT button for about 3 seconds to enter the setup mode. The IN or OUT LEDs flash according to their current setup.
2. Press and hold the EQ. SELECT button to cycle through the four equalization states, as defined in [Table 3](#).

Table 3: Equalization Level Setup

LED STATUS		Equalization Level Suitable for:
IN LED	OUT LED	
Flashing	Off	Short cable length
Flashing	On	Medium cable length
Off	Flashing	Long cable length
On	Flashing	Extra-long cable length

5.2 Wiring the CAT 5 LINE IN/LINE OUT RJ-45 Connectors

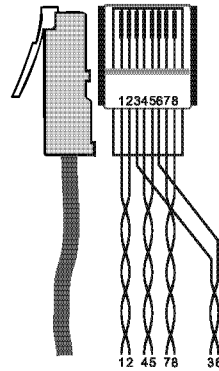
Table 4 and Figure 4 define the STP CAT 5 pinout using a straight pin to pin cable with RJ-45 connectors.

Note: The cable Ground shielding must be connected/soldered to the connector shield:

Table 4: CAT 5 Pinout

EIA /TIA 568A		EIA /TIA 568B	
PIN	Wire Color	PIN	Wire Color
1	Green / White	1	Orange / White
2	Green	2	Orange
3	Orange / White	3	Green / White
4	Blue	4	Blue
5	Blue / White	5	Blue / White
6	Orange	6	Green
7	Brown / White	7	Brown / White
8	Brown	8	Brown
Pair 1		4 and 5	
Pair 2		3 and 6	
Pair 3		1 and 2	
Pair 4		7 and 8	

Figure 4: CAT 5 Pinout



6 Technical Specifications

The **TP-953/TP-954** technical specifications are shown in Table 5.

Table 5: TP-953/TP-954 Technical Specifications¹

	TP-953	TP-954
INPUTS:	1 DVI ² on a 24-pin Molex connector, 1 analog audio on a 3.5mm mini jack, 1 S/PDIF on an RCA connector, 1 optical on a TOSLINK® connector	2 CAT 5 IN on RJ-45 connectors
OUTPUTS:	2 CAT 5 OUT on RJ-45 connectors	1 DVI ² on a 24-pin Molex connector, 1 analog audio on a 3.5mm mini jack, 1 S/PDIF on a RCA connector, 1 optical on a TOSLINK® connector
MAX DATA RATE:	Supports up to 1.65Gbps per graphic channel	
CONTROLS:	N/A	EQ. select pushbutton
INDICATORS:	IN, OUT, ON LEDs (green)	
POWER SOURCE:	12V DC, 460mA	12V DC, 380mA
DIMENSIONS	10.7cm x 10.4cm x 4.4cm (4.2" x 4.1" x 1.7") W, D, H	
WEIGHT:	0.33kg (0.73lbs)	
ACCESSORIES:	Power supply	
OPTIONS:	19" rack mount adapter, Kramer BC-DGKat524 (CAT 5 24 AWG), BC-DGKat623 (CAT 6 23 AWG) and BC-DGKat7a23 (CAT 7a 23 AWG) cables ³	

¹ Specifications are subject to change without notice

² On a DVI-I connector. Note that only the digital signal (DVI-D) is available on the DVI connector

³ The complete list of Kramer cables is on our Web site at <http://www.kramerelectronics.com>

LIMITED WARRANTY

Kramer Electronics (hereafter *Kramer*) warrants this product free from defects in material and workmanship under the following terms.

HOW LONG IS THE WARRANTY

Labor and parts are warranted for three years from the date of the first customer purchase.

WHO IS PROTECTED?

Only the first purchase customer may enforce this warranty.

WHAT IS COVERED AND WHAT IS NOT COVERED

Except as below, this warranty covers all defects in material or workmanship in this product. The following are not covered by the warranty:

1. Any product which is not distributed by Kramer, or which is not purchased from an authorized Kramer dealer. If you are uncertain as to whether a dealer is authorized, please contact Kramer at one of the agents listed in the Web site www.kramerelectronics.com.
2. Any product, on which the serial number has been defaced, modified or removed, or on which the WARRANTY VOID IF TAMPERED sticker has been torn, reattached, removed or otherwise interfered with.
3. Damage, deterioration or malfunction resulting from:
 - i) Accident, misuse, abuse, neglect, fire, water, lightning or other acts of nature
 - ii) Product modification, or failure to follow instructions supplied with the product
 - iii) Repair or attempted repair by anyone not authorized by Kramer
 - iv) Any shipment of the product (claims must be presented to the carrier)
 - v) Removal or installation of the product
 - vi) Any other cause, which does not relate to a product defect
 - vii) Cartons, equipment enclosures, cables or accessories used in conjunction with the product

WHAT WE WILL PAY FOR AND WHAT WE WILL NOT PAY FOR

We will pay labor and material expenses for covered items. We will not pay for the following:

1. Removal or installations charges.
2. Costs of initial technical adjustments (set-up), including adjustment of user controls or programming. These costs are the responsibility of the Kramer dealer from whom the product was purchased.
3. Shipping charges.

HOW YOU CAN GET WARRANTY SERVICE

1. To obtain service on you product, you must take or ship it prepaid to any authorized Kramer service center.
2. Whenever warranty service is required, the original dated invoice (or a copy) must be presented as proof of warranty coverage, and should be included in any shipment of the product. Please also include in any mailing a contact name, company, address, and a description of the problem(s).
3. For the name of the nearest Kramer authorized service center, consult your authorized dealer.

LIMITATION OF IMPLIED WARRANTIES

All implied warranties, including warranties of merchantability and fitness for a particular purpose, are limited in duration to the length of this warranty.

EXCLUSION OF DAMAGES

The liability of Kramer for any effective products is limited to the repair or replacement of the product at our option. Kramer shall not be liable for:

1. Damage to other property caused by defects in this product, damages based upon inconvenience, loss of use of the product, loss of time, commercial loss, or;
2. Any other damages, whether incidental, consequential or otherwise. Some countries may not allow limitations on how long an implied warranty lasts and/or do not allow the exclusion or limitation of incidental or consequential damages, so the above limitations and exclusions may not apply to you.

This warranty gives you specific legal rights, and you may also have other rights, which vary from place to place.

NOTE: All products returned to Kramer for service must have prior approval. This may be obtained from your dealer.

This equipment has been tested to determine compliance with the requirements of:

- EN-50081: "Electromagnetic compatibility (EMC); generic emission standard.
Part 1: Residential, commercial and light industry"
- EN-50082: "Electromagnetic compatibility (EMC) generic immunity standard.
Part 1: Residential, commercial and light industry environment".
- CFR-47: FCC* Rules and Regulations:
Part 15: "Radio frequency devices
Subpart B Unintentional radiators"

CAUTION!

- ⊗ Servicing the machines can only be done by an authorized Kramer technician. Any user who makes changes or modifications to the unit without the expressed approval of the manufacturer will void user authority to operate the equipment.
- ⊗ Use the supplied DC power supply to feed power to the machine.
- ⊗ Please use recommended interconnection cables to connect the machine to other components.
* FCC and CE approved using STP cable (for twisted pair products)





For the latest information on our products and a list of Kramer distributors visit www.kramerelectronics.com where updates to this user manual may be found. We welcome your questions, comments and feedback.



Caution

Safety Warning:

Disconnect the unit from the power supply before opening/servicing.



Kramer Electronics, Ltd.

Web site: www.kramerelectronics.com

E-mail: info@kramereel.com

P/N: 2900-000516 REV 5