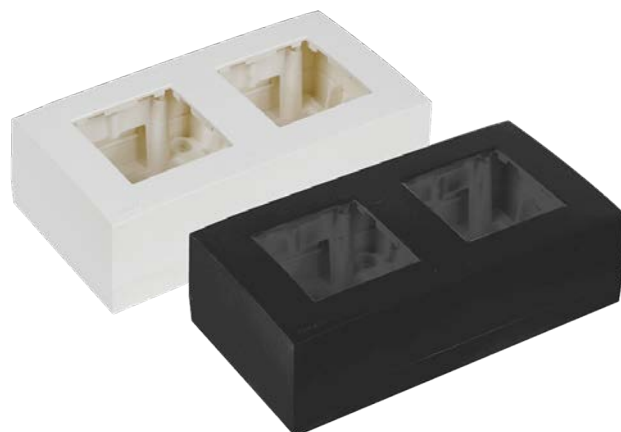




# WB45D

Surface mount box double 45 x 45 mm

The WB45 wall boxes allow surface mount installation for any 45 x 45 mm standard sized product such as matrix control panels, volume controllers, connection plates, ...They come including a metal subframe(s) and are available in single (WB45S) and double (WB45D) unit size. They are available in black (/B) and white (/W)



## Variants:

---

- WB45D/W - White version
- WB45D/B - Black version

